

# Oxford City Planning Committee Presentation

[www.oxford.gov.uk](http://www.oxford.gov.uk)



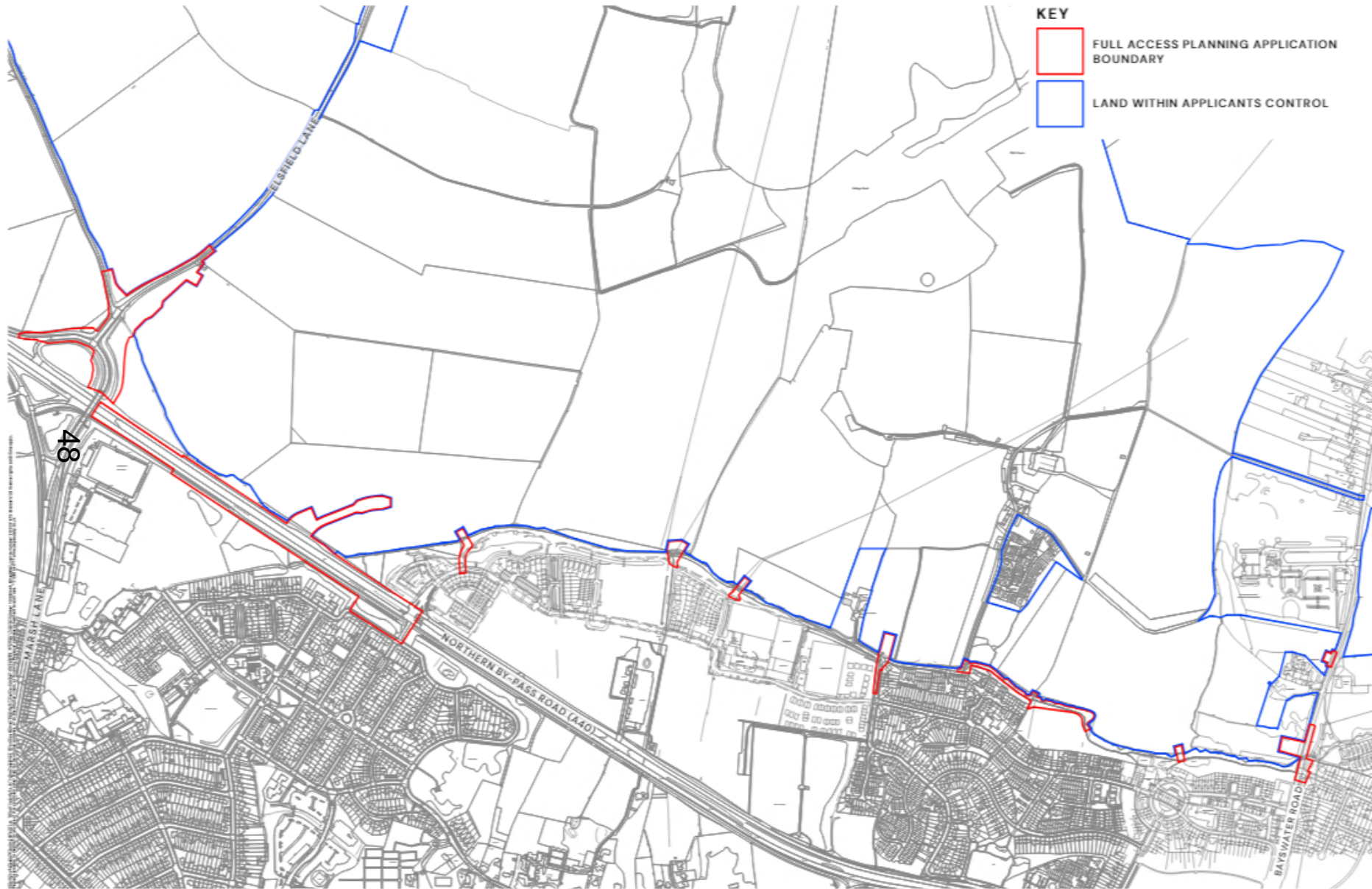
47

**Reference Number: 22/03049/FUL**

**Site Address: Land North of Bayswater Brook**



# Site Location Plan

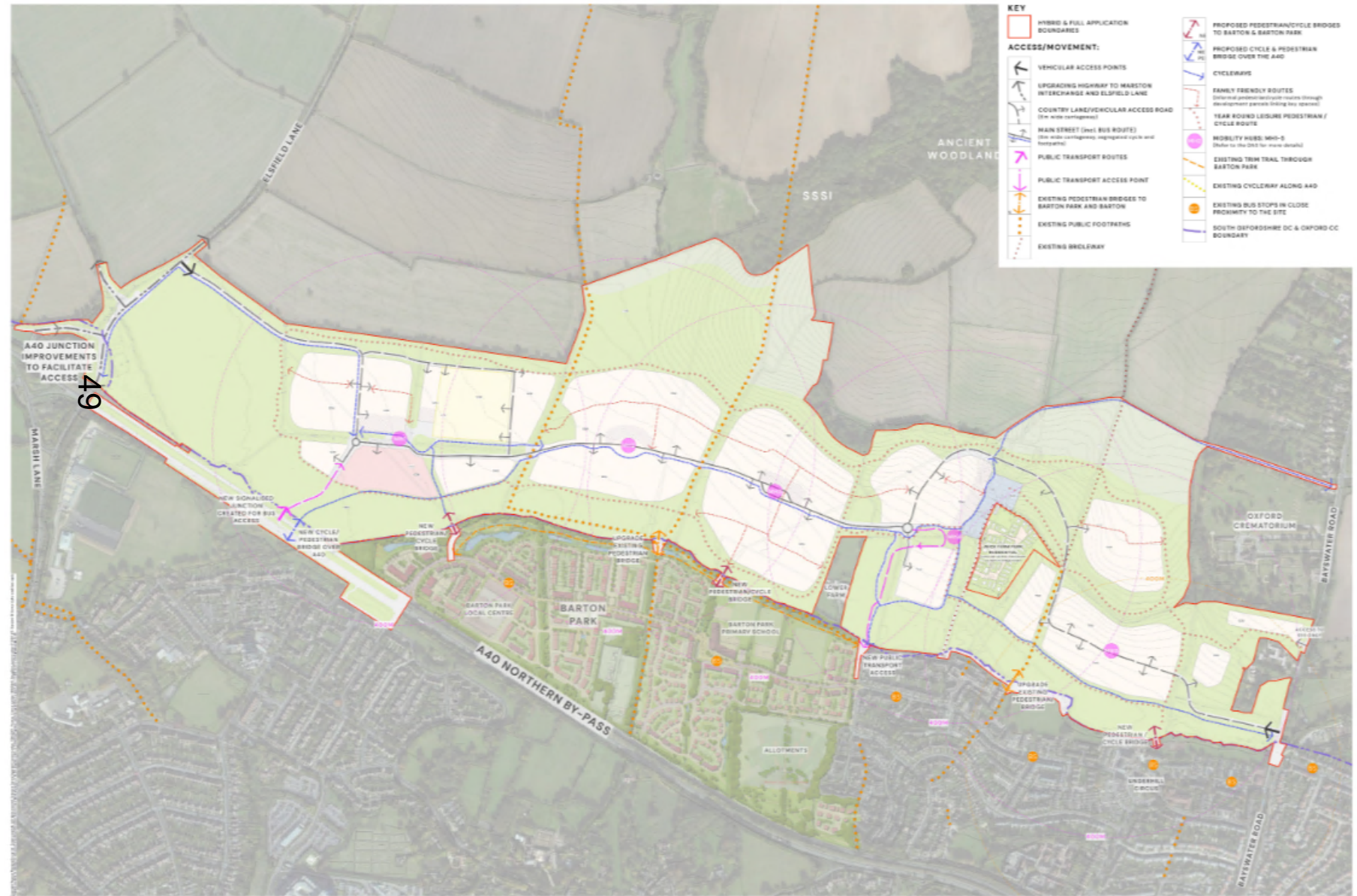


LAND NORTH OF BAYSWATER BROOK, OXFORD - FULL ACCESS PLANNING APPLICATION BOUNDARY

**PEGASUS**  
GROUP



# Access and Movement Plan





# Western Access – Elsfield Lane and Marston Interchange

50





# Western Access – Elsfield Lane and Marston Interchange

51





# Western Access – Elsfield Lane and Marston Interchange

52





# Eastern Access Works Location

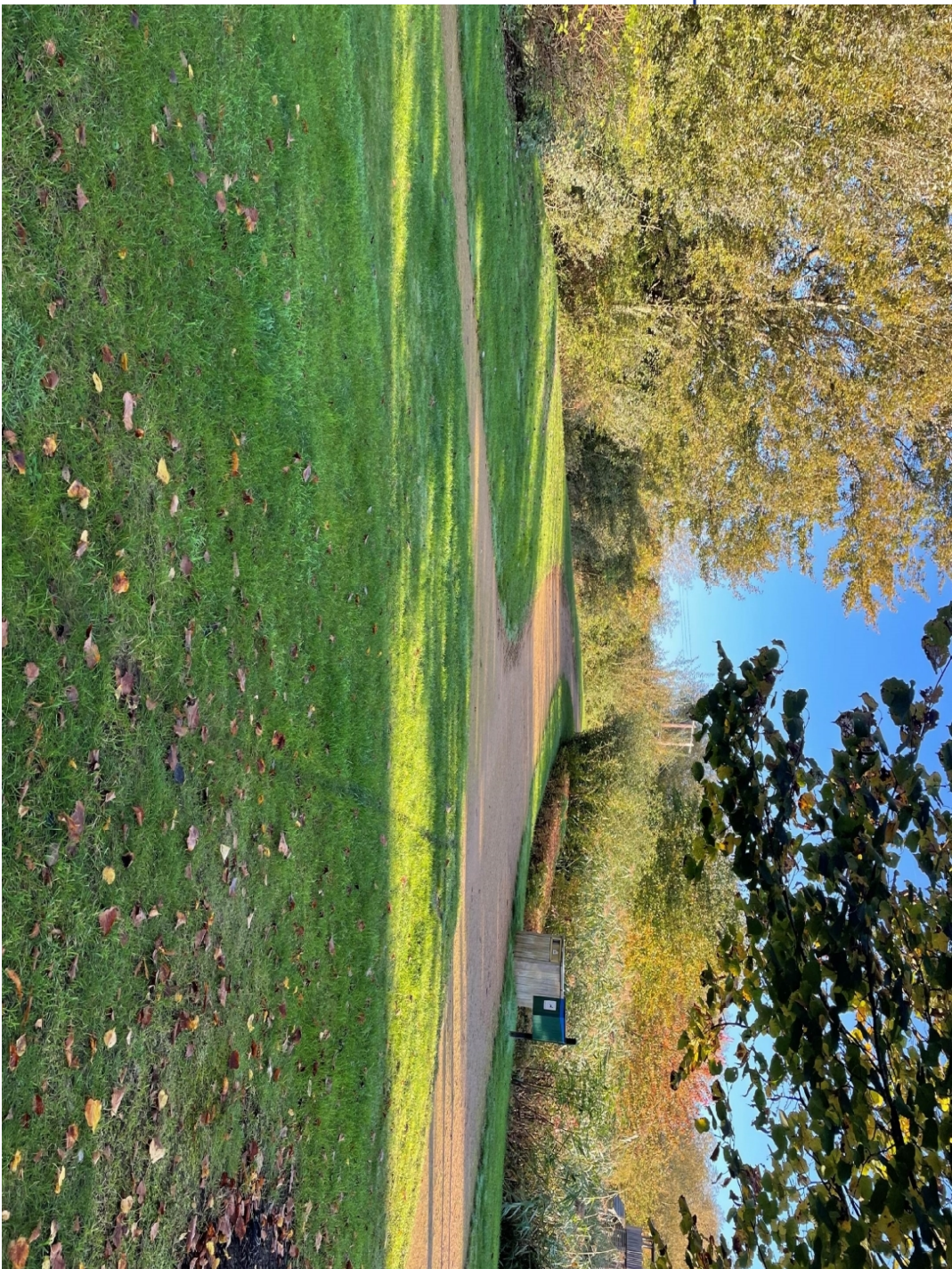
53





# Bridge B1 connection to Barton Park

54





# Bridge B1 connection to Barton Park

55





# Bridge B2 connection to Barton Park

56





# Bridge B3 connection to Barton Park

57





# Bridge B4 connection to Barton Park and Fettiplace Road

58





# Bridge B4 connection to Barton Park and Fettiplace Road

59





# Bridge B5 connection to Underhill Circus

60





# Bridge B5 connection to Barton Park and Underhill Circus

61





# Bridge B5 connection to Taggs Gate

62





# A40 Eastbound Carriageway – Location of A40 Cycle / Pedestrian Bridge

69





# A40 Westbound Carriageway - Bus Priority Junction Location

64





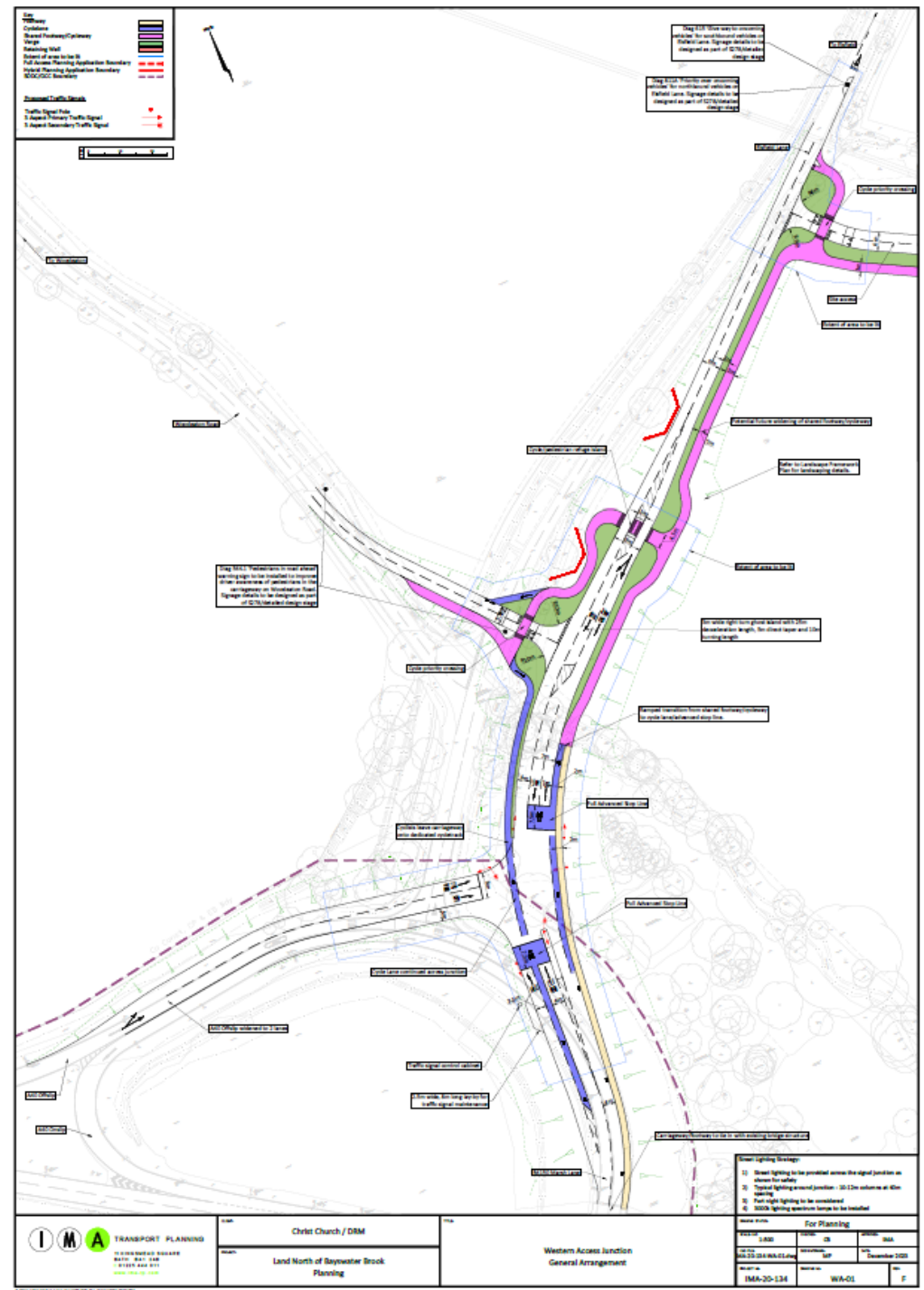
# Barton Village Road Public Transport Bridge Connection

65



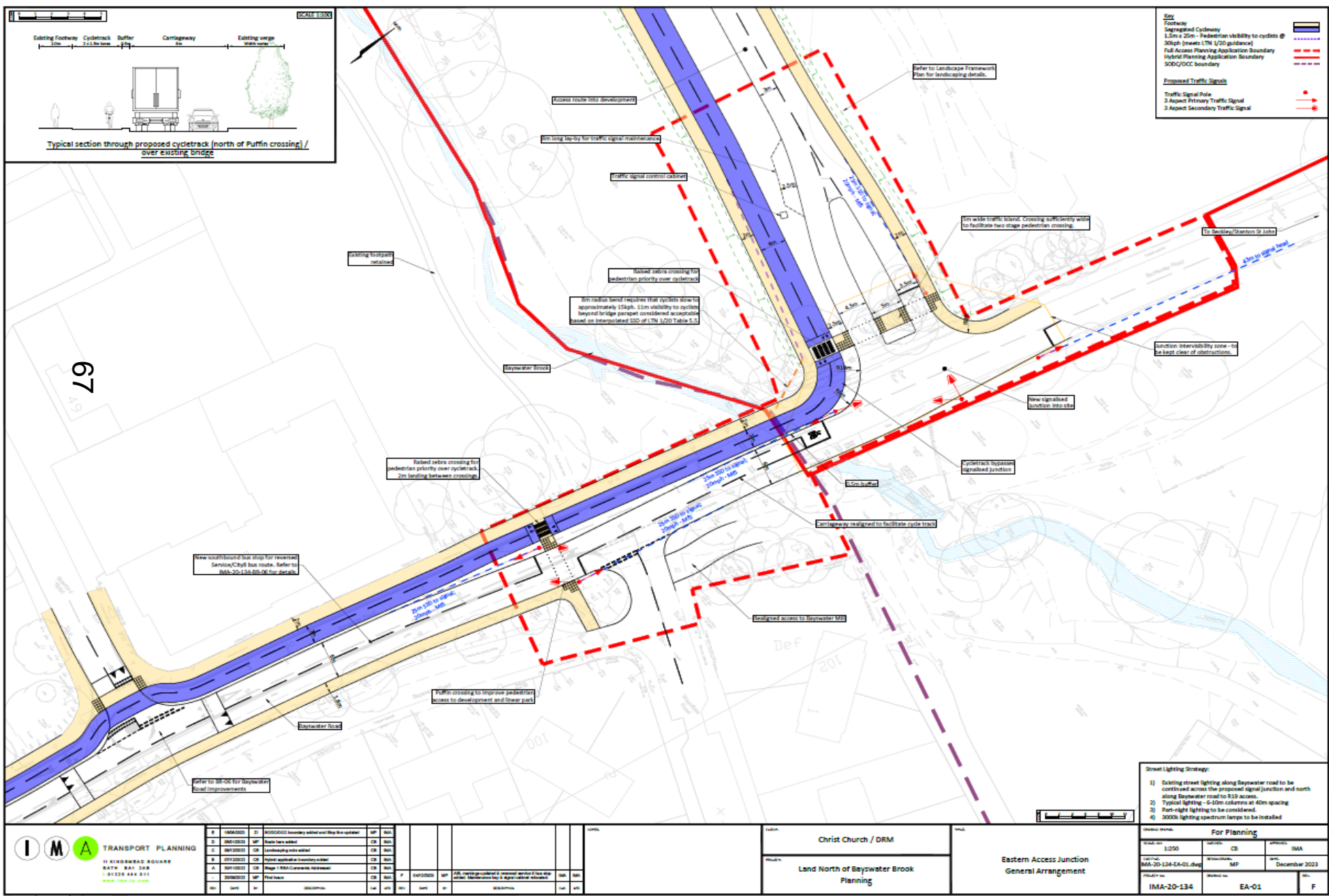


## 99



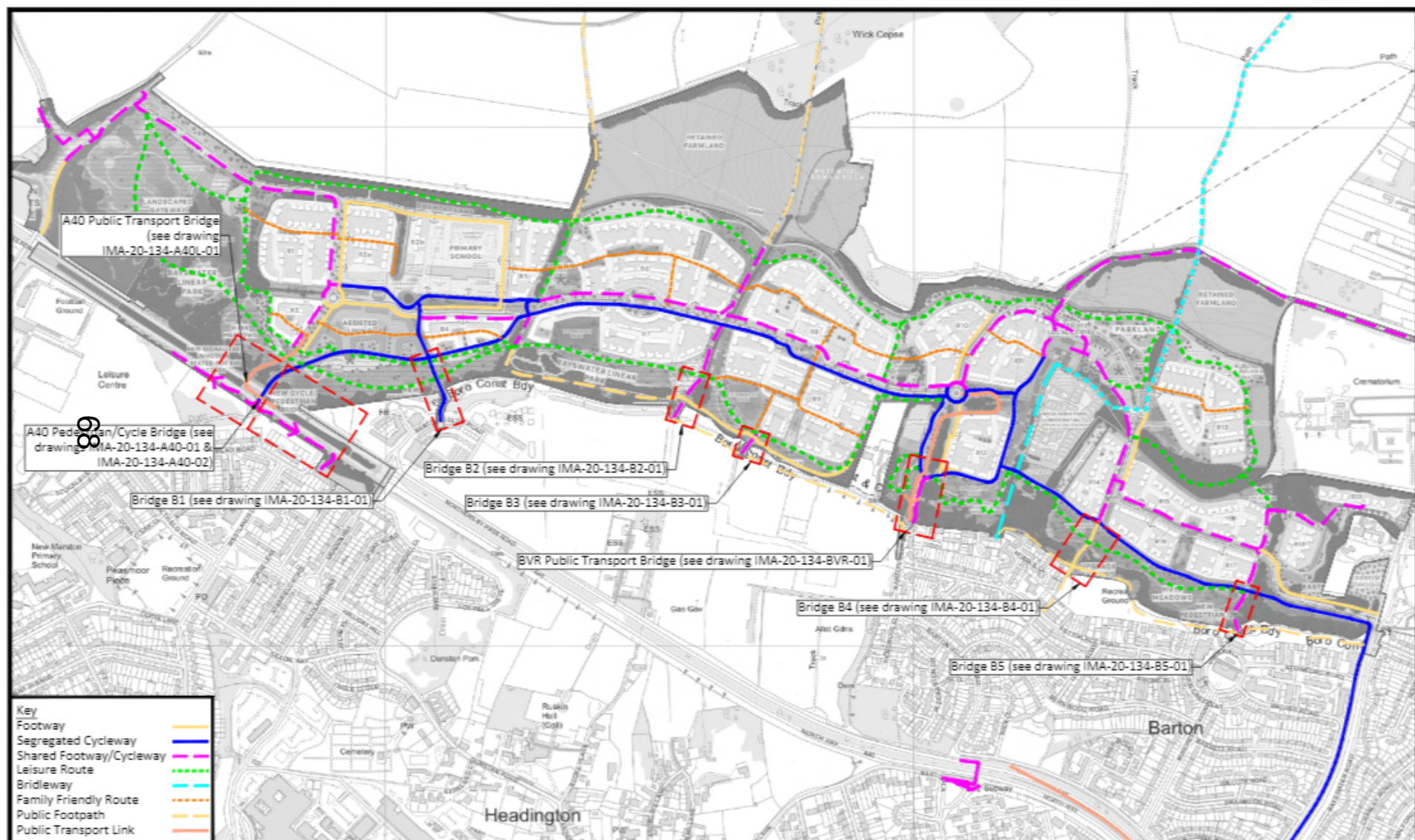


# Eastern Access





# Connectivity Bridges



TRANSPORT PLANNING  
11 KINGSDOWN SQUARE  
BATH, BA1 2QR  
01225 444 011  
www.ima-tg.com

CLIENT:

Christ Church / DRM

PROJECT:

Land North of Bayswater Brook  
Planning

TITLE:

Bridge Works Key Plan

SCALE: (A3)

NTS

CAD FILE:

IMA-20-134-KP-06.dwg

PROJECT No:

IMA-20-134

CHECKED:

IMA

DESIGN/DRAWN:

MP

DRAWN/DWG:

KP-06

APPROVED:

IMA

DATE:

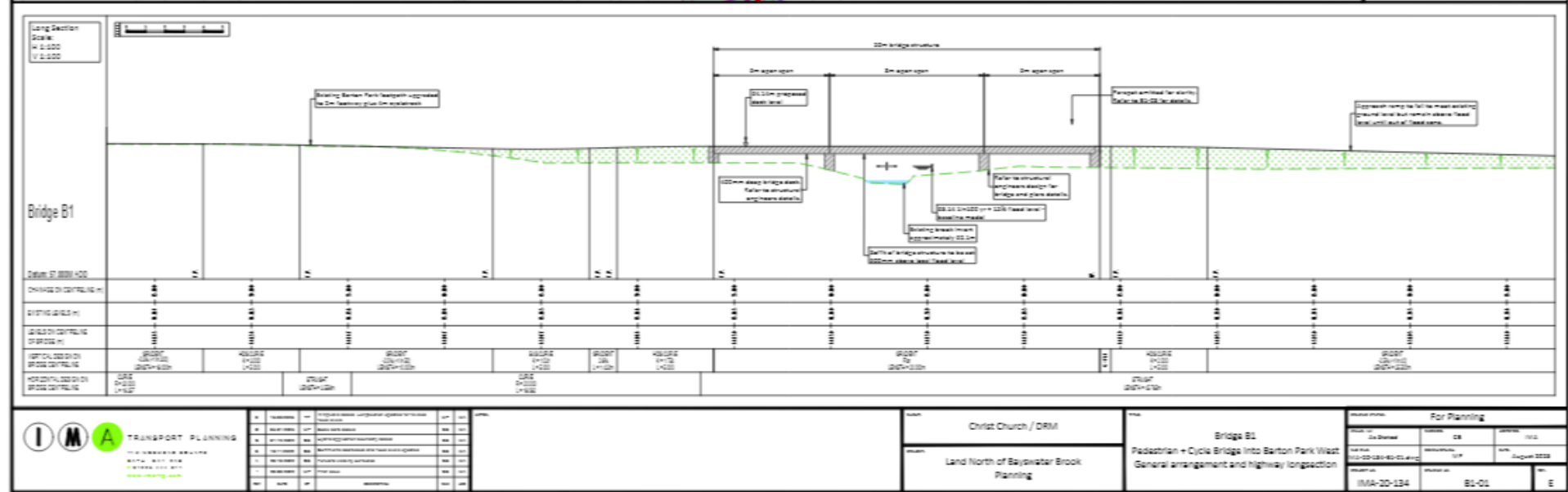
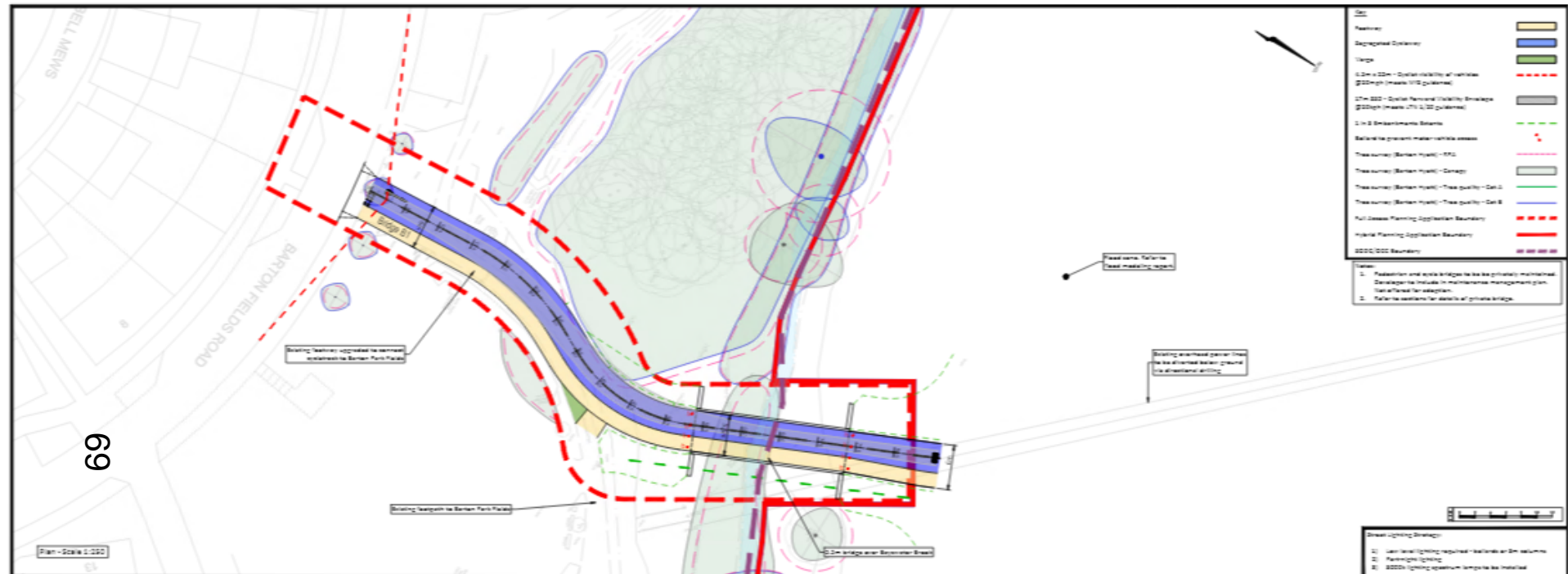
September 2023

REV:

C

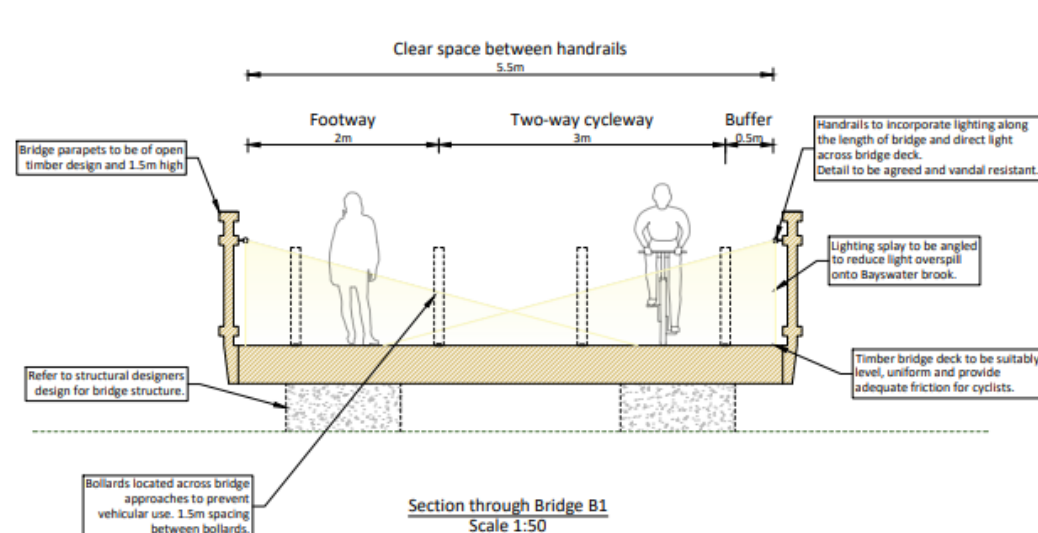


# Bridge B1





# Bridge B1



Section through Bridge B1  
Scale 1:50



Image 1: Timber parapet - Sarum Hardwood Type EE, or similar

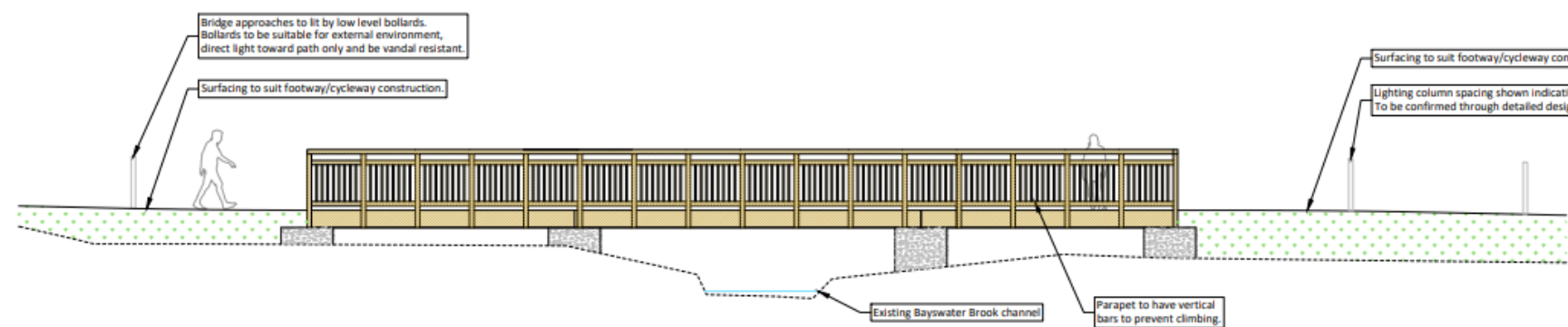
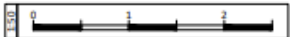


Image 2: Handrail lighting - Formation Lighting Puck Zero, or similar



Image 3: Lighting Bollards - Stratton LED Lighting Bollard, or similar

Note: Details of lighting and parapet design are proposed to be agreed through a discharge of planning condition.



Elevation of Bridge B1  
Scale 1:100



 <b>TRANSPORT PLANNING</b> 11 KINGSMEAD SQUARE BATH BA1 2AB 01225 444 011 www.ima-tp.com	CLIENT: <b>Christ Church / DRM</b>	TITLE: <b>Bridge B1</b>	SCALE: (AS) As stated	CHECKED: IMA	APPROVED: IMA
	PROJECT: <b>Land North of Bayswater Brook Planning</b>	<b>Cross-Section and Elevation</b>	CAD FILE: IMA-20-134-B1-03.dwg	DESIGN/DRAWN: CB	DATE: August 2023
			PROJECT No: IMA-20-134	DRAWING No: B1-03	REV: B



## 71



RESEARCH PROJECT			For Planning		
PROJECT NO.	CONTAINER	DATE			
100-100	CR	10/12			
DATE	RESEARCH PROJECT	DATE			
10/12-00-100-00-01	CR	September 2000			
PROJECT NO.	PROJECT NO.	DATE			
100-100-100	CR	10/12			



# Bridge B2

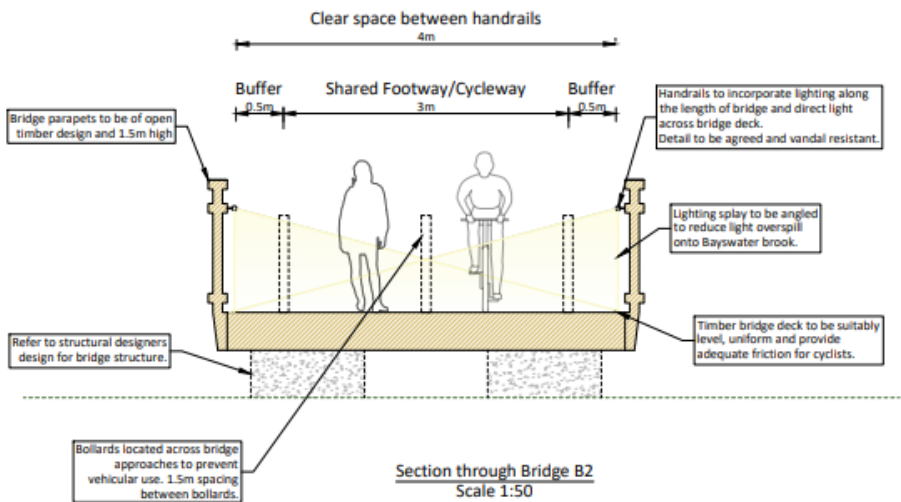


Image 1: Timber parapet - Sarum Hardwood Type EE, or similar

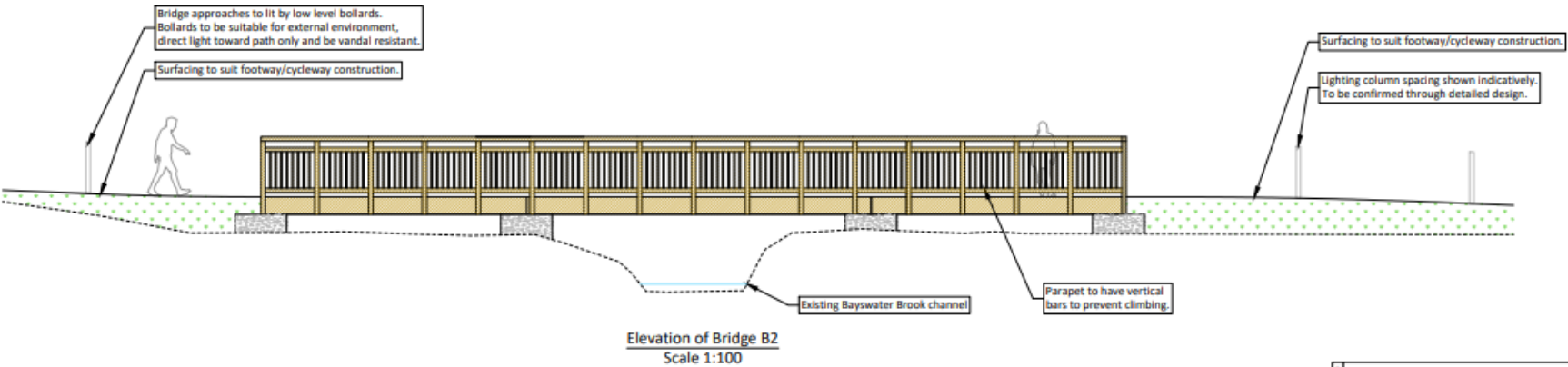


Image 2: Handrail lighting - Formation Lighting Puck Zero, or similar



Image 3: Lighting Bollards - Stratton LED Lighting Bollard, or similar

Note: Details of lighting and parapet design are proposed to be agreed through a discharge of planning condition.







# Bridge B3

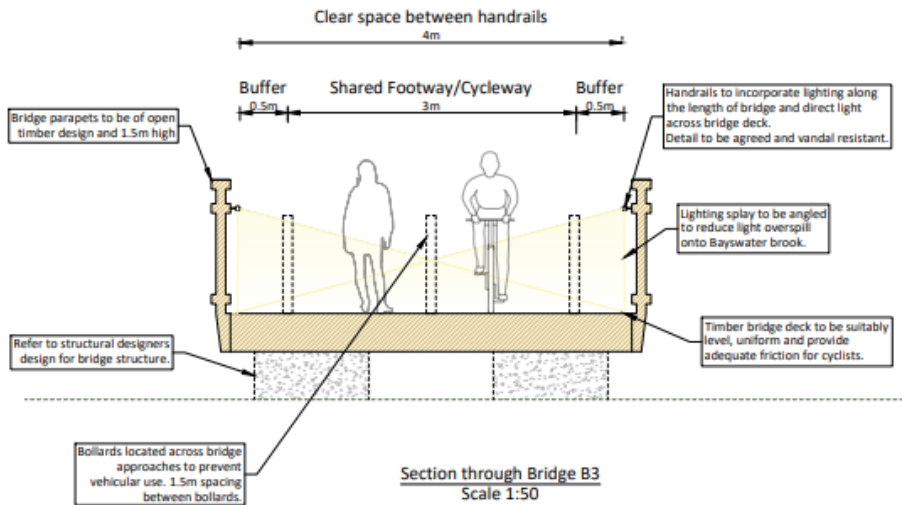


Image 1: Timber parapet - Sarum Hardwood Type EE, or similar

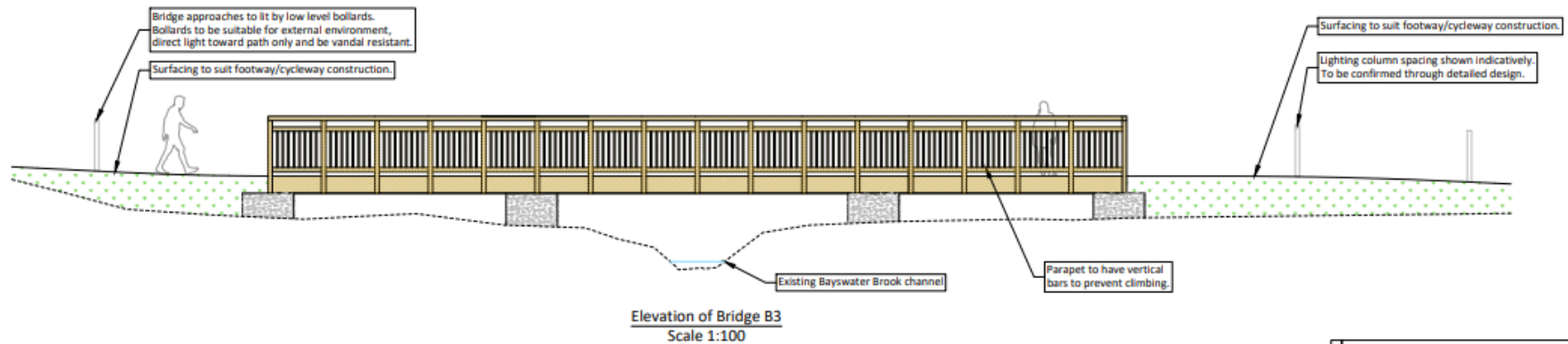


Image 2: Handrail lighting - Formation Lighting Puck Zero, or similar



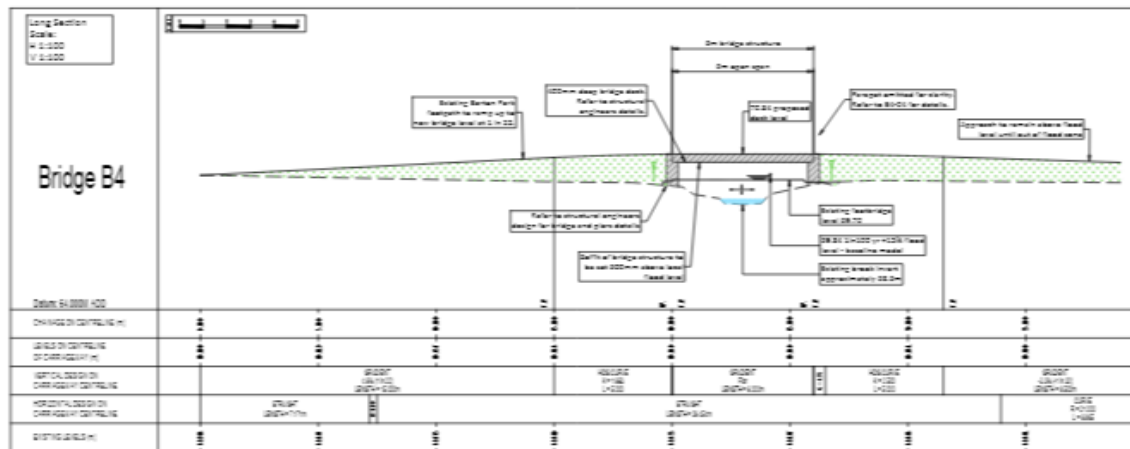
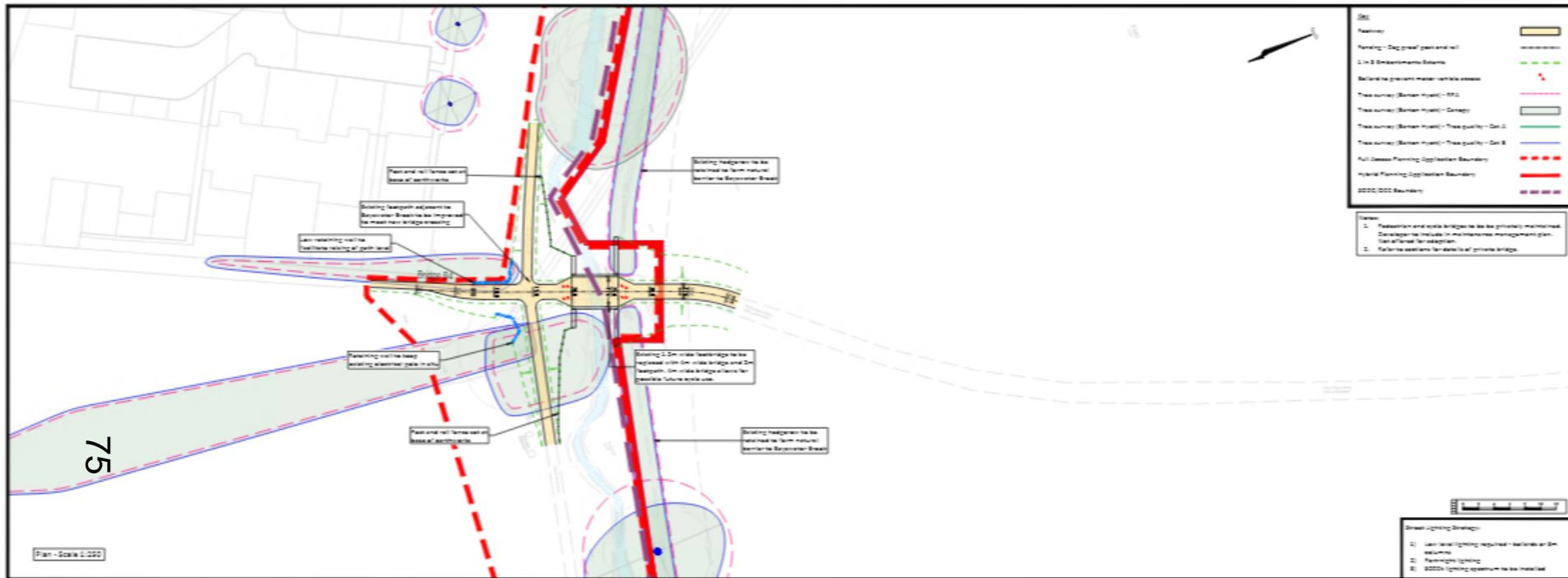
Image 3: Lighting Bollards - Stratton LED Lighting Bollard, or similar

Note: Details of lighting and parapet design are proposed to be agreed through a discharge of planning condition..

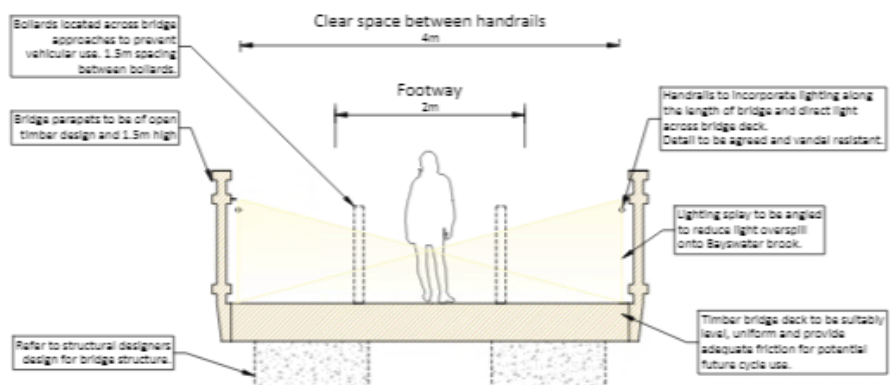




# Bridge B4



# Bridge B4



Section through Bridge B4  
Scale 1:50



Image 1: Timber parapet - Sarum Hardwood Type EE, or similar



Image 2: Handrail lighting - Formation Lighting Puck Zero, or similar

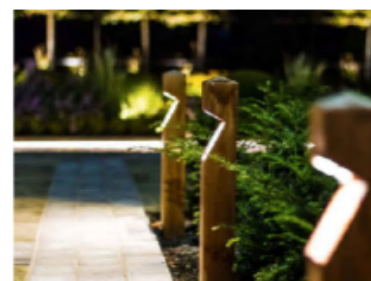
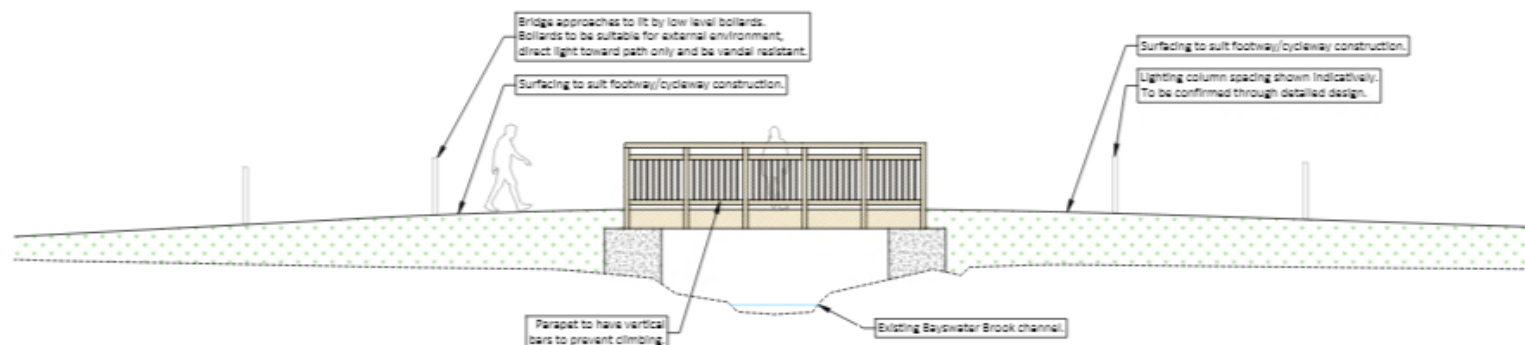


Image 3: Lighting Bollards - Stratton LED Lighting Bollard, or similar

NOTE: Details of lighting and parapet design are proposed to be agreed through a discharge of planning condition.



76

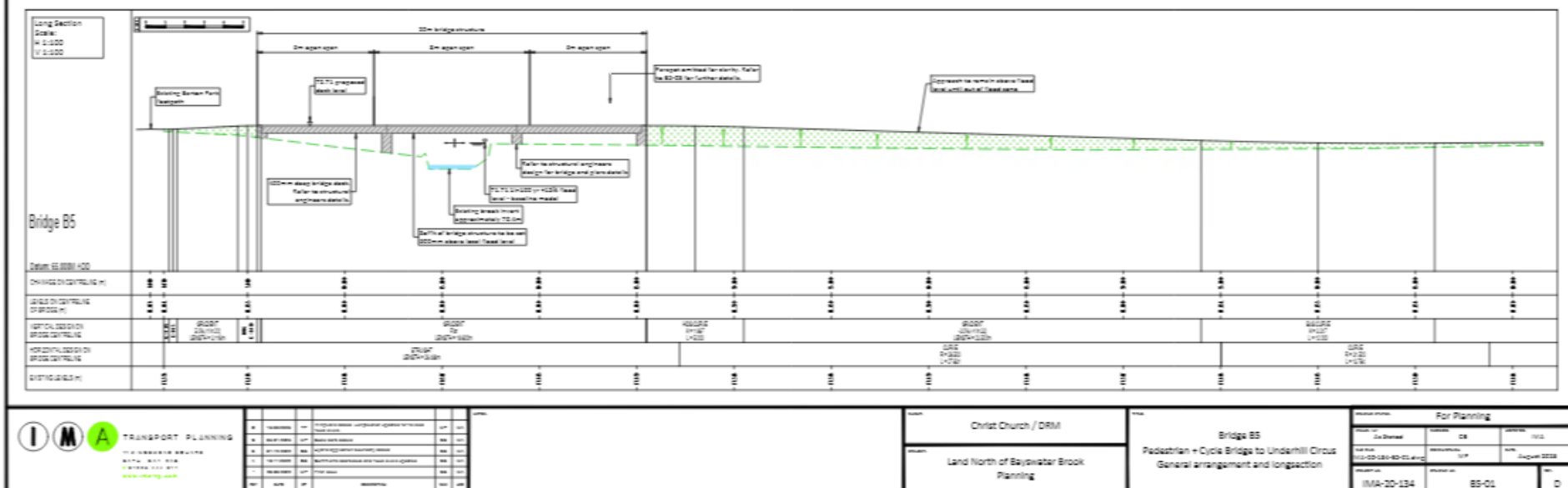


Elevation of Bridge B4  
Scale 1:100





## 77



# Bridge B5

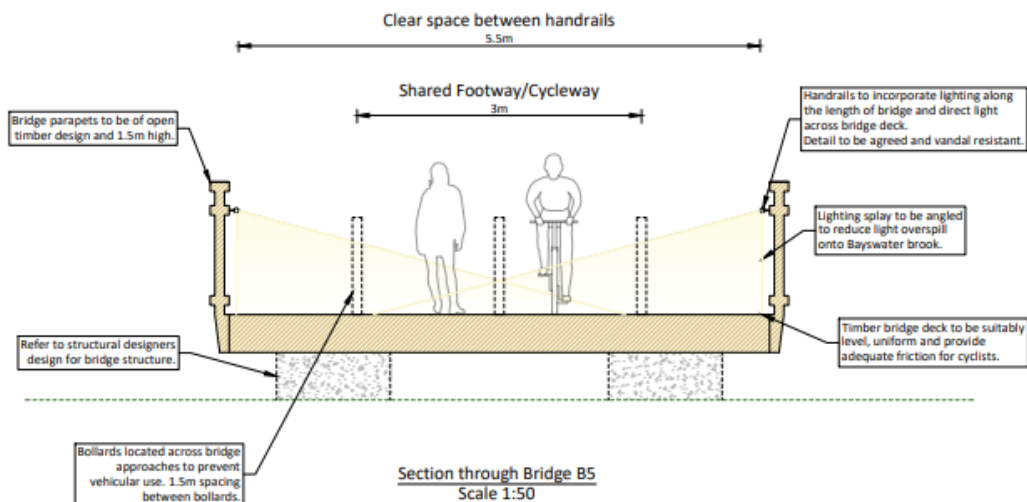


Image 1: Timber parapet - Sarum Hardwood Type EE, or similar



Image 2: Handrail lighting - Formation Lighting Puck Zero, or similar

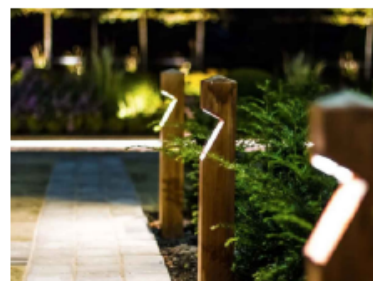
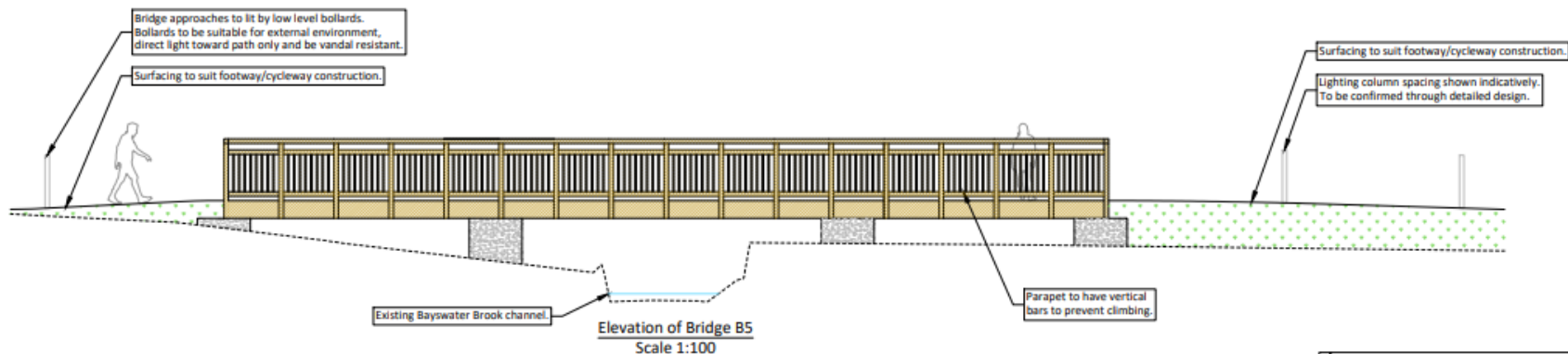


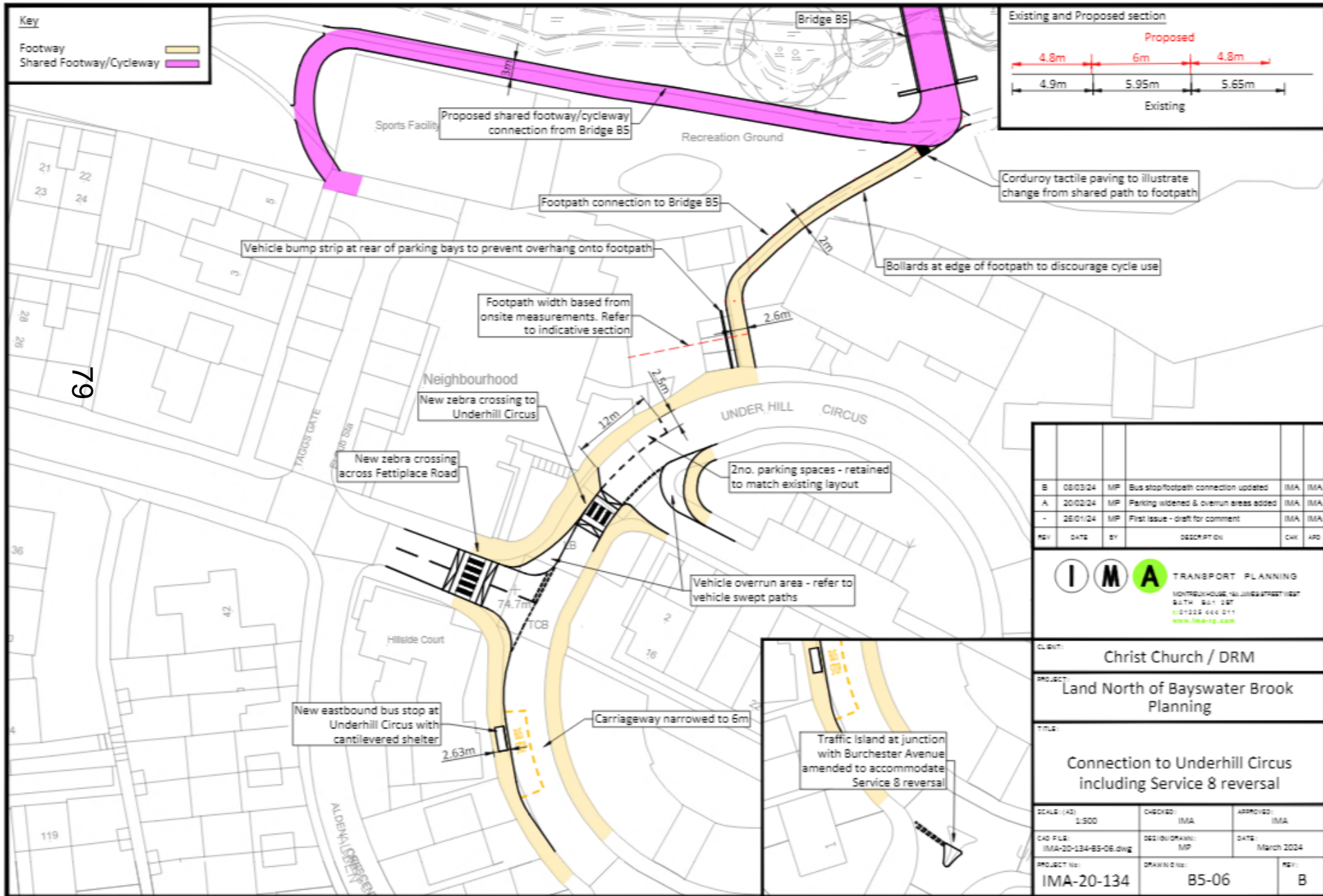
Image 3: Lighting Bollards - Stratton LED Lighting Bollard, or similar

Note: Details of lighting and parapet design are proposed to be agreed through a discharge of planning condition

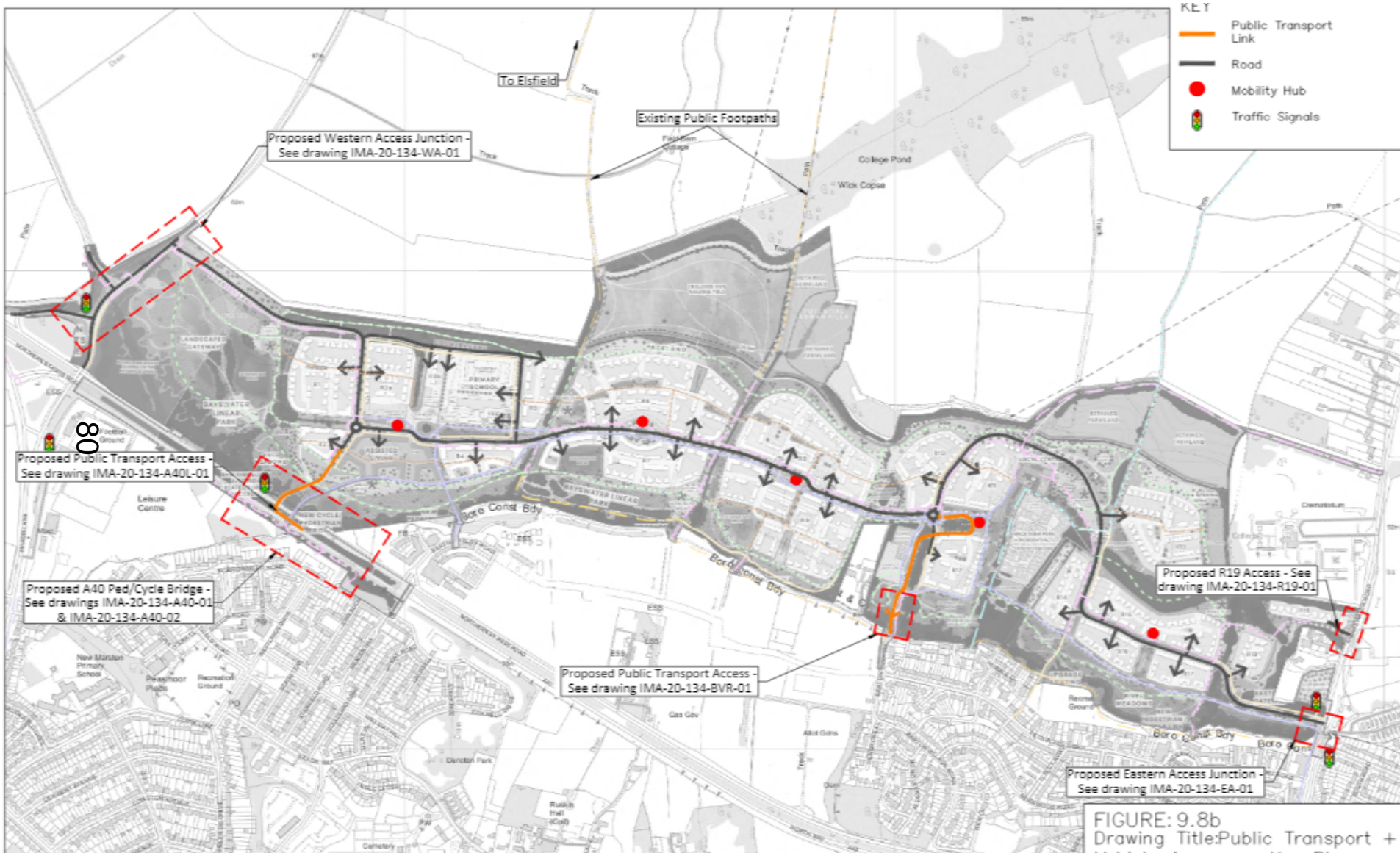




# Bridge B5 to Underhill Circus Connection

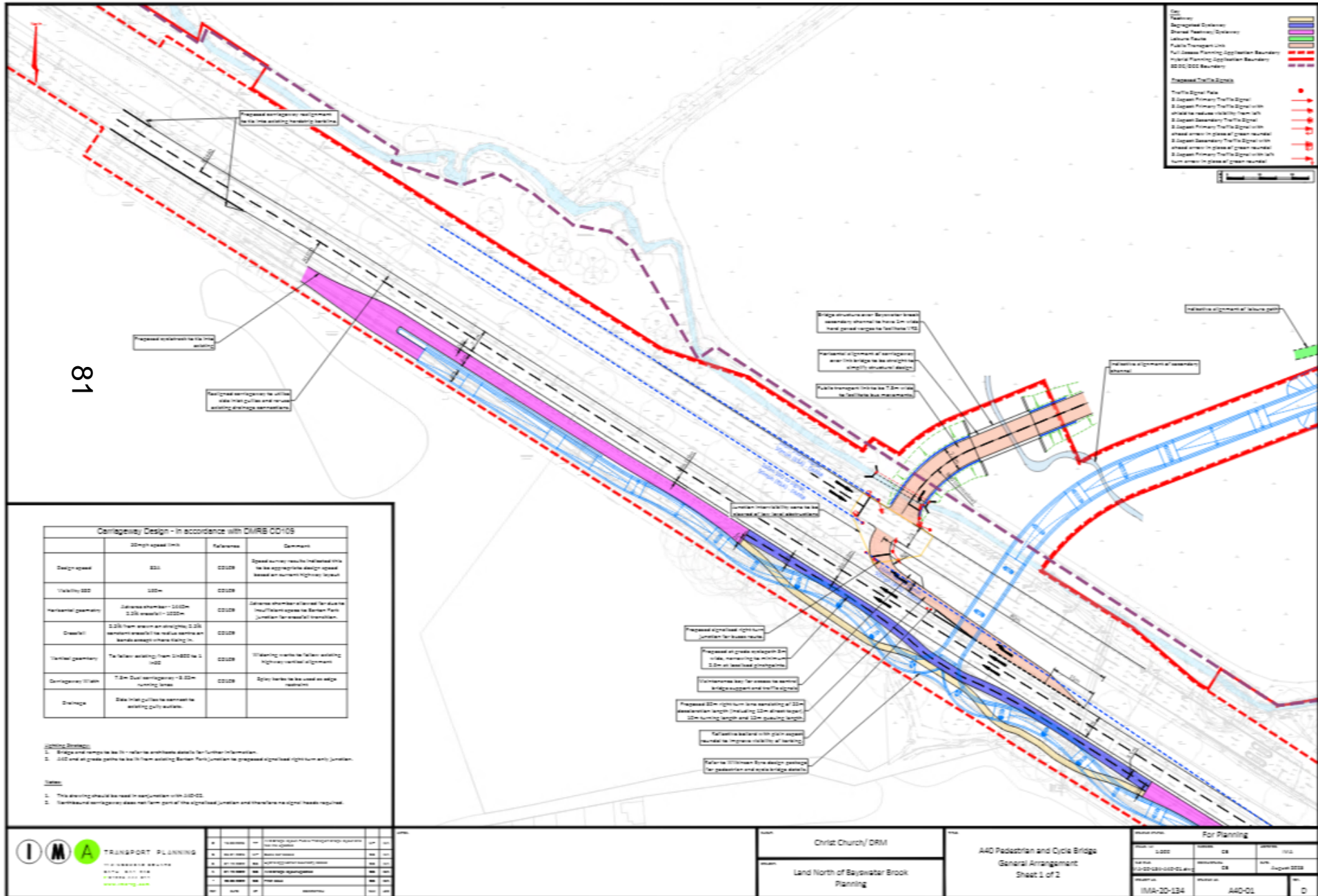


# Public Transport Access Points





# A40 Pedestrian / Cycle Bridge and Bus Link



# A40 Pedestrian / Cycle Bridge Images



82



# A40 Pedestrian / Cycle Bridge Images

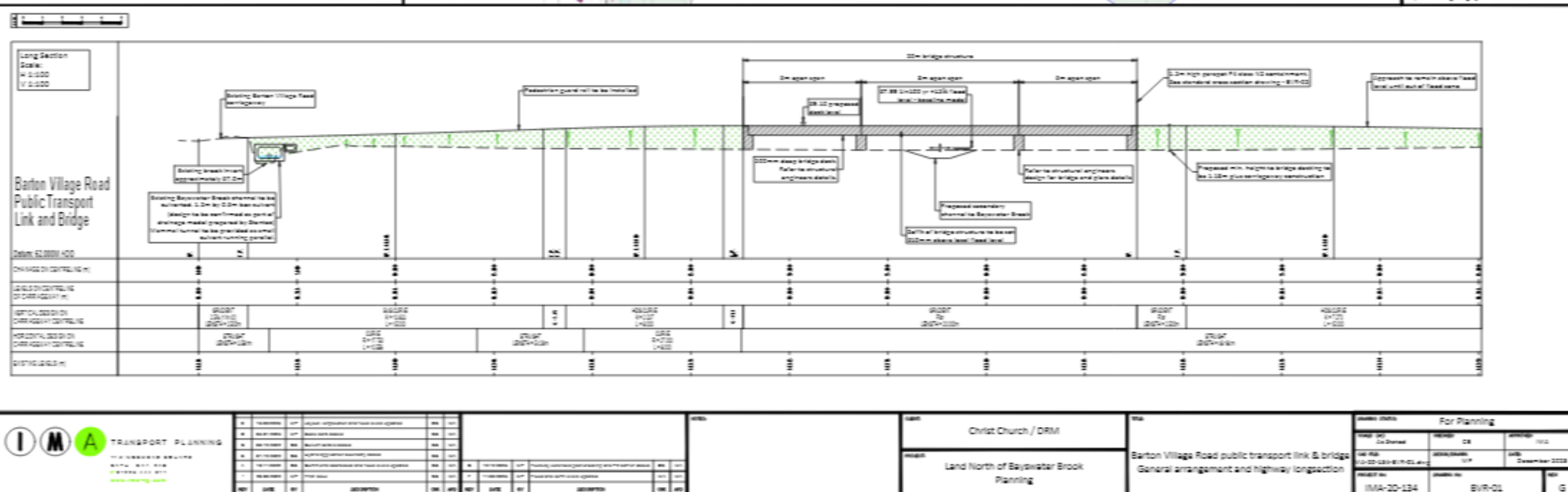


# A40 Pedestrian / Cycle Bridge Images



84





# Barton Village Road Public Transport Bridge

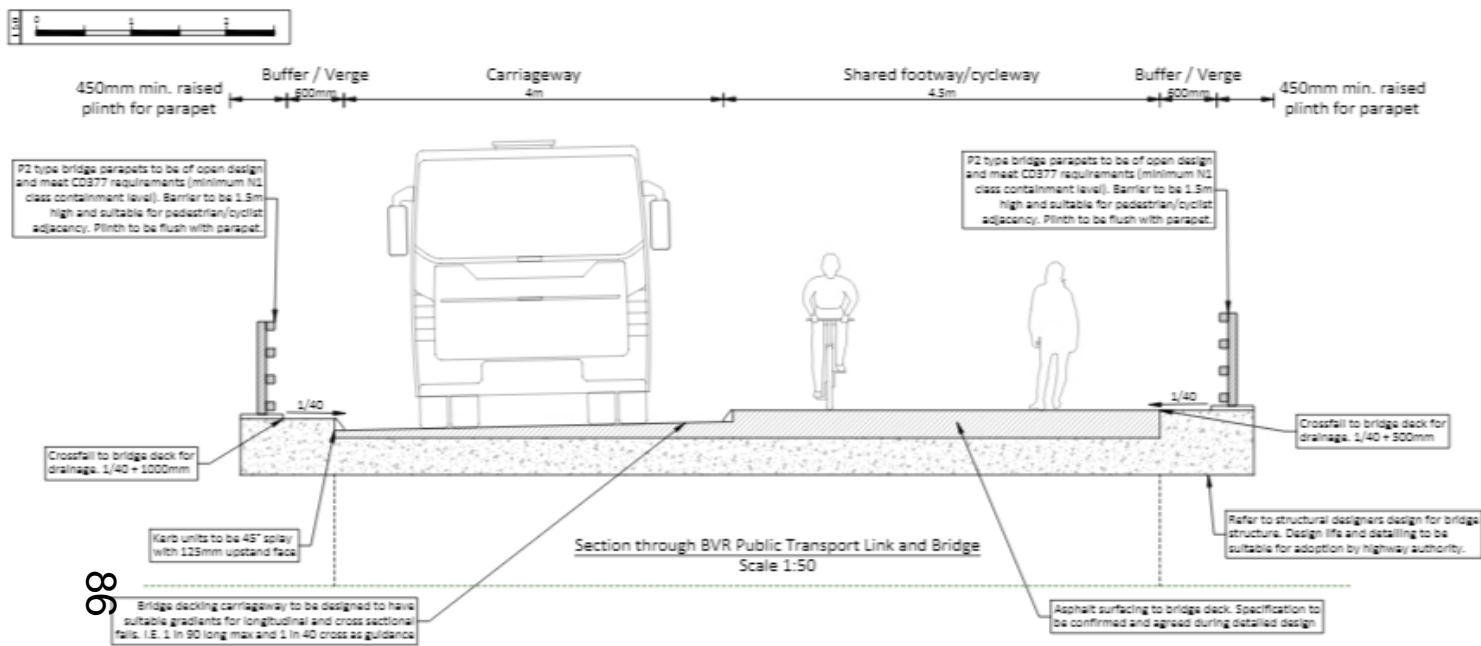
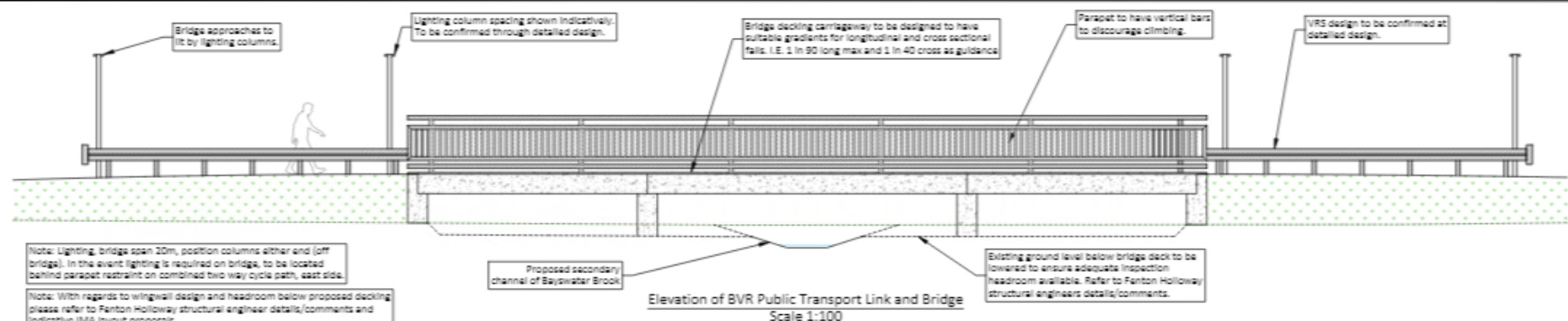


Image 1: Bridge parapet - Varley and Gulliver VGSN800, or similar



Image 2: Bridge parapet (alternative) - Sanum Hardwood N2 Parapet, or similar

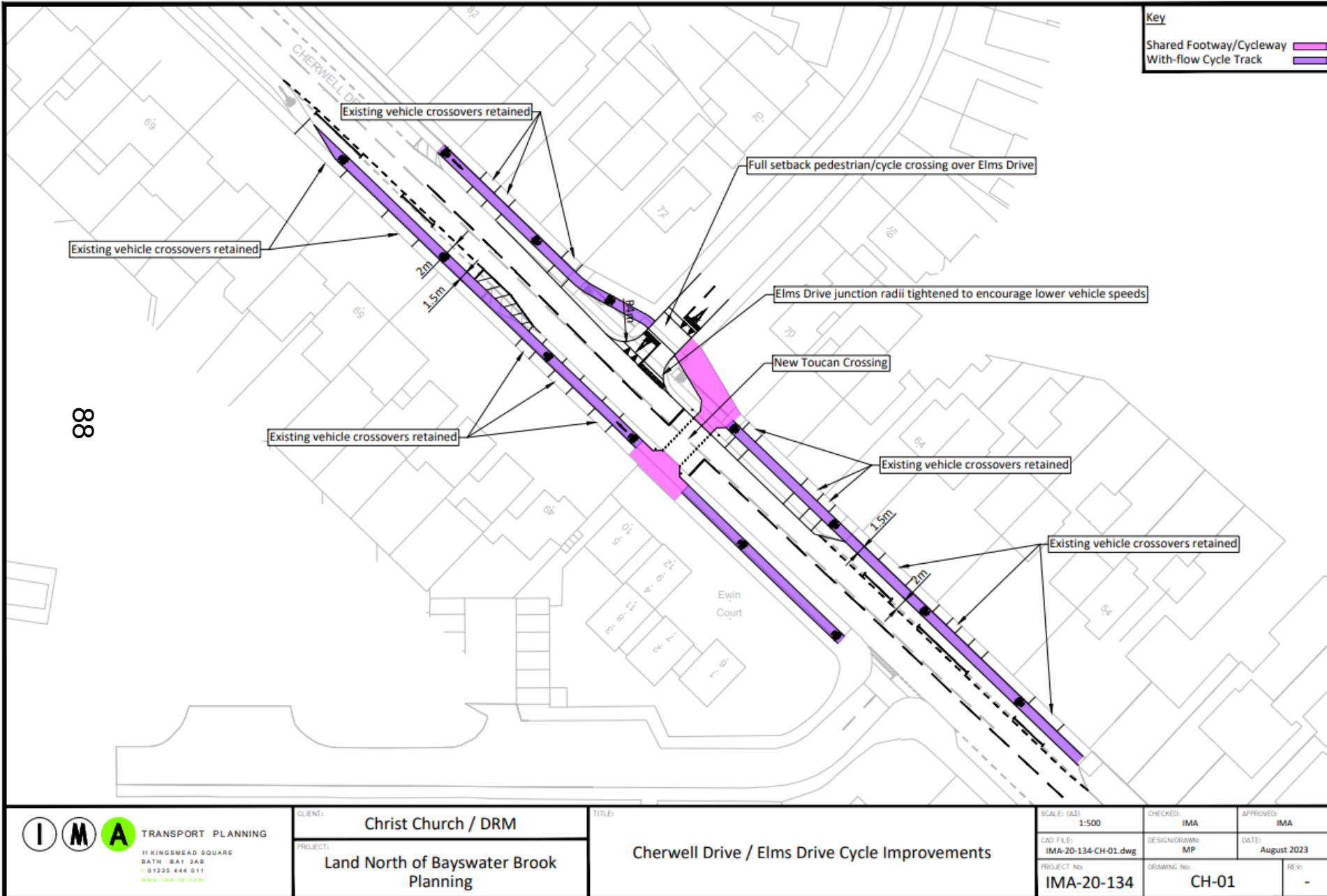




# Off-Site Highway Works

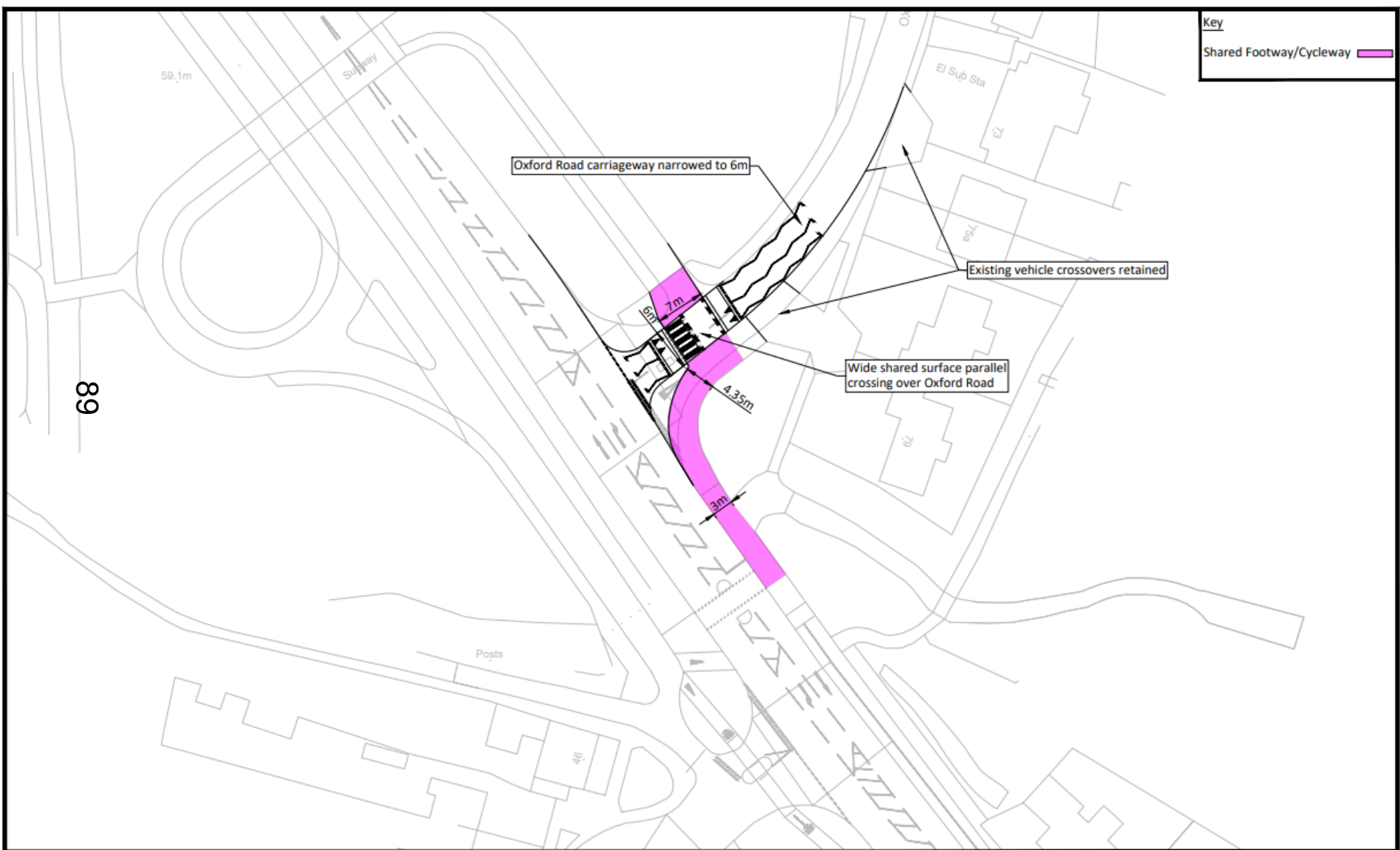


# Cherwell Drive / Elms Drive Highways Works





# Cherwell Drive / Elms Drive Highways Works



**Key**

Shared Footway/Cycleway

I

M

A

TRANSPORT PLANNING

11 KINGSMEAD SQUARE

BATH BA1 2AB

T: 01225 444 011

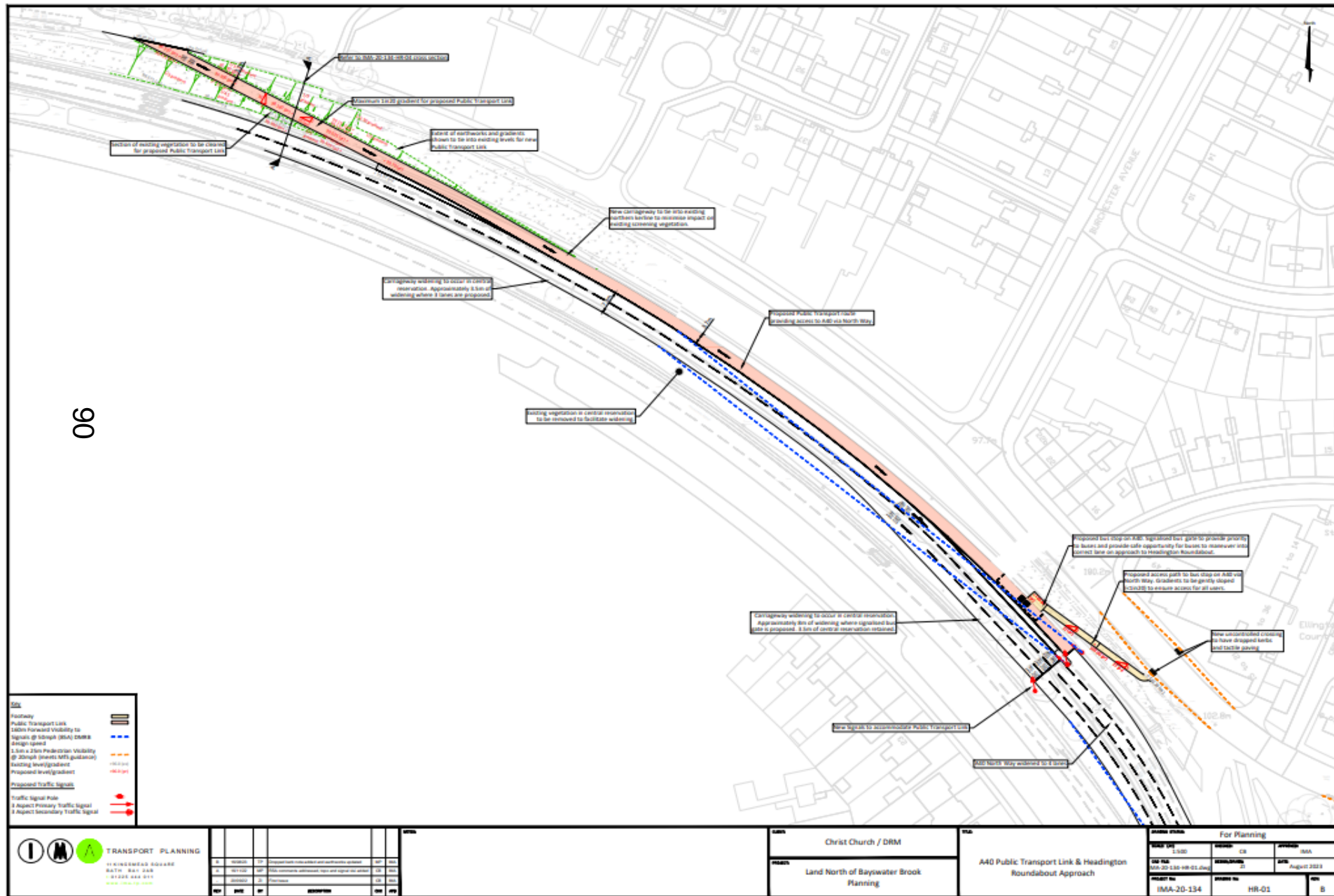
www.ima-tp.com

CLIENT:	Christ Church / DRM
PROJECT:	Land North of Bayswater Brook Planning

TITLE:	Cherwell Drive / Oxford Road Parallel Crossing Option
--------	---

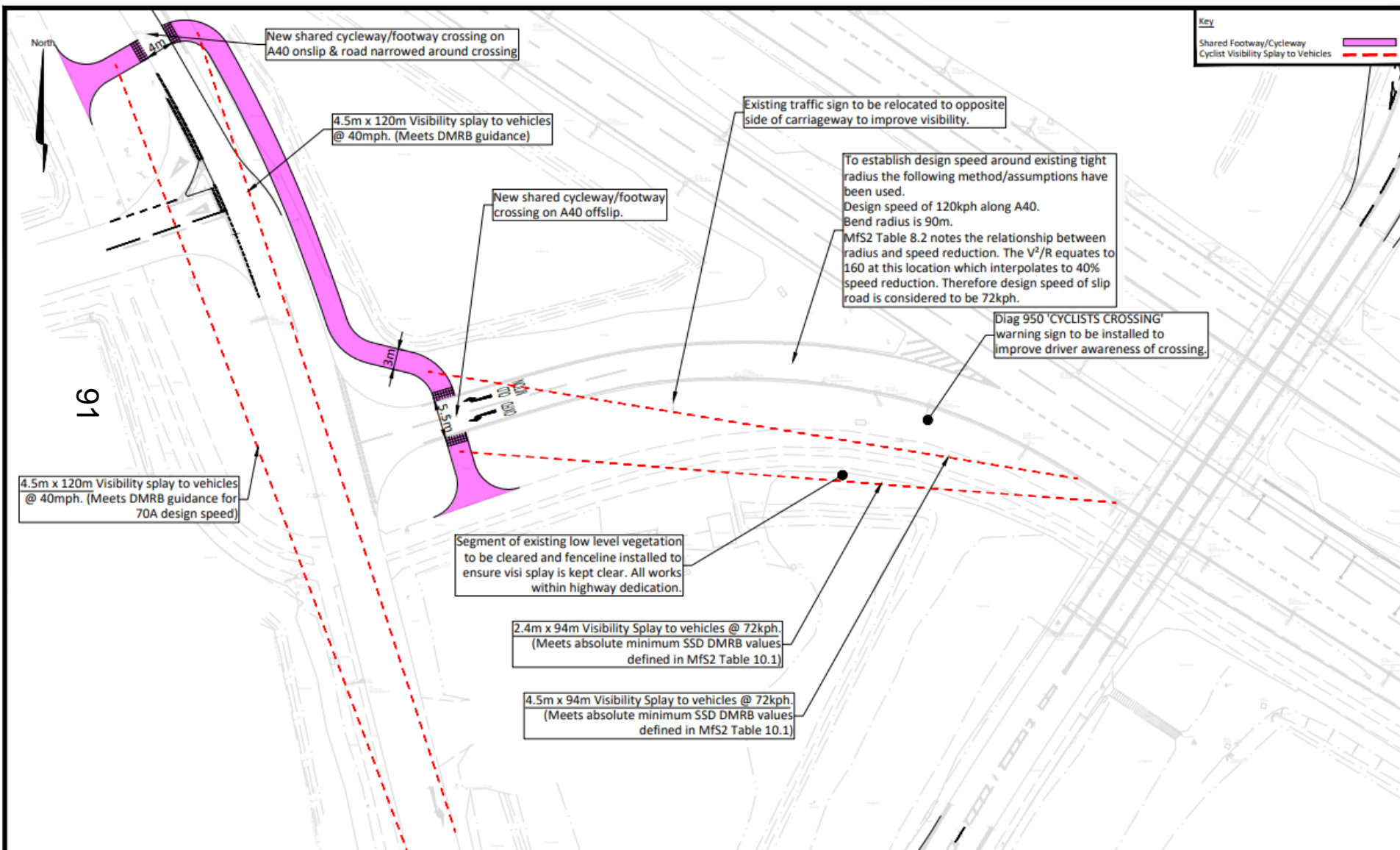
SCALE: (A3)	1:500	CHECKED: IMA	APPROVED: IMA
CAD FILE:	IMA-20-134-CH-02.dwg	DESIGN/DRAWN: MP	DATE: August 2023
PROJECT No:	IMA-20-134	DRAWING No:	CH-02
		REV:	-

## 06



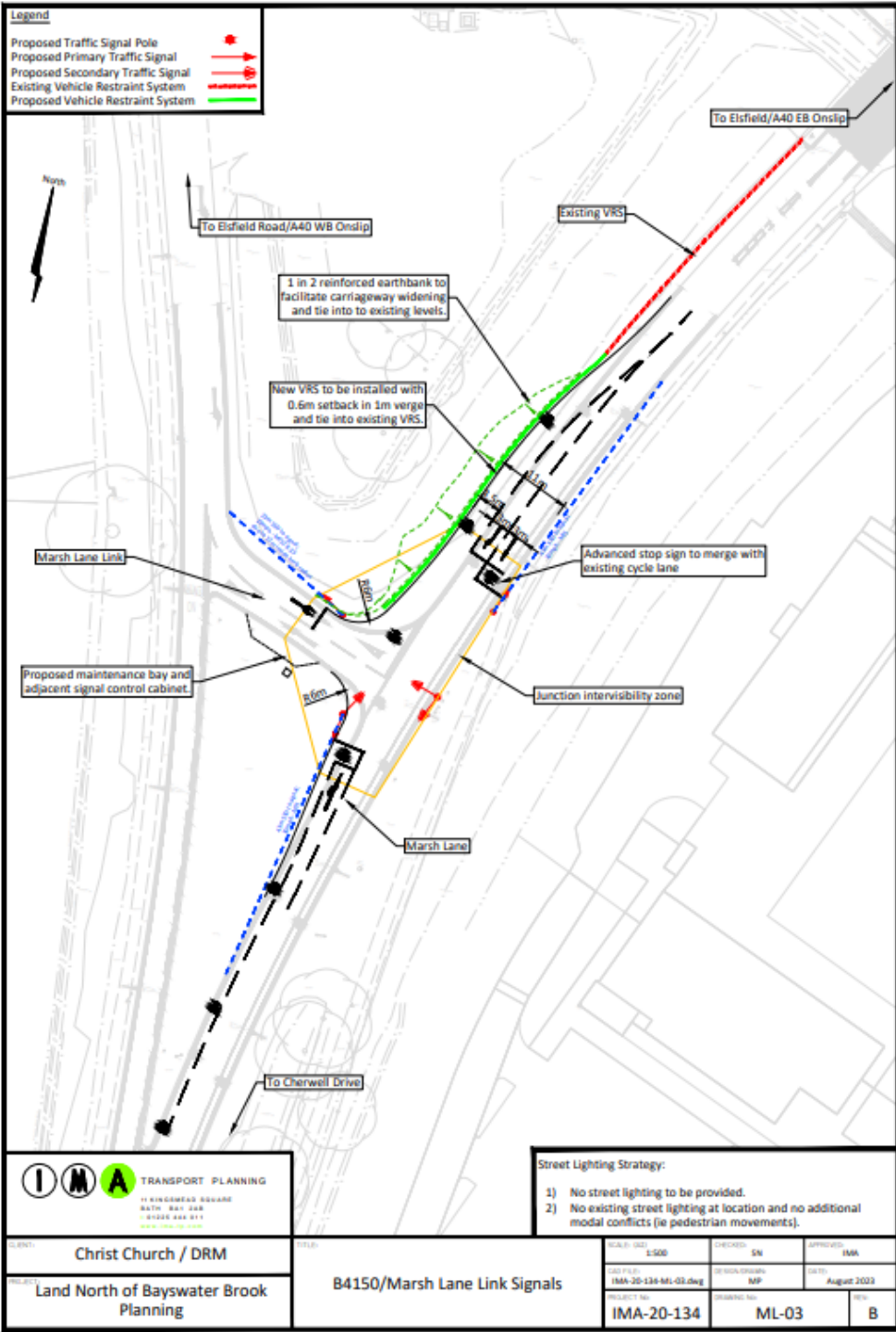


# Marsh Lane Cycle Improvements



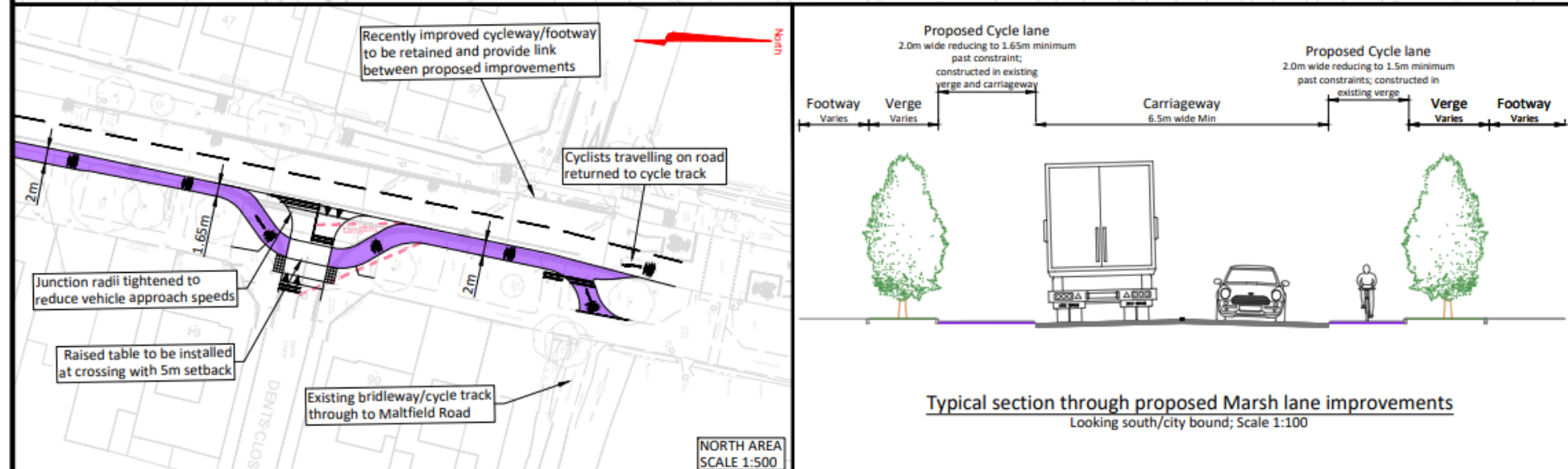
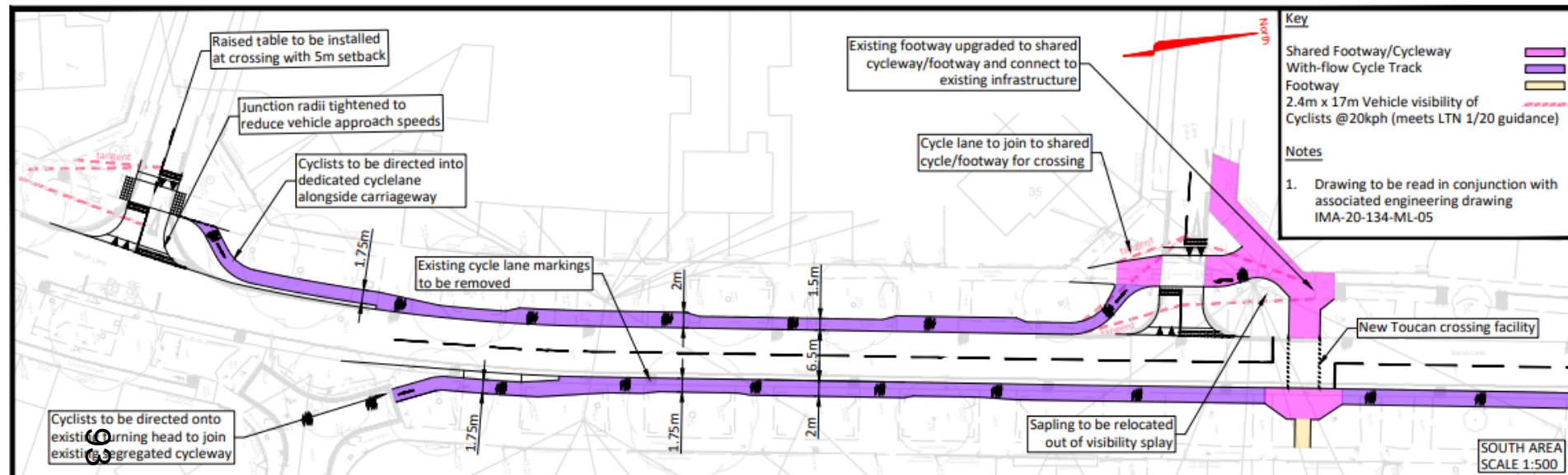
# Marsh Lane Signals

92





# Marsh Lane Cycle Improvements



This page is intentionally left blank