

Oxford City Planning Committee Presentation

Reference Number: 23/02411/FUL

3

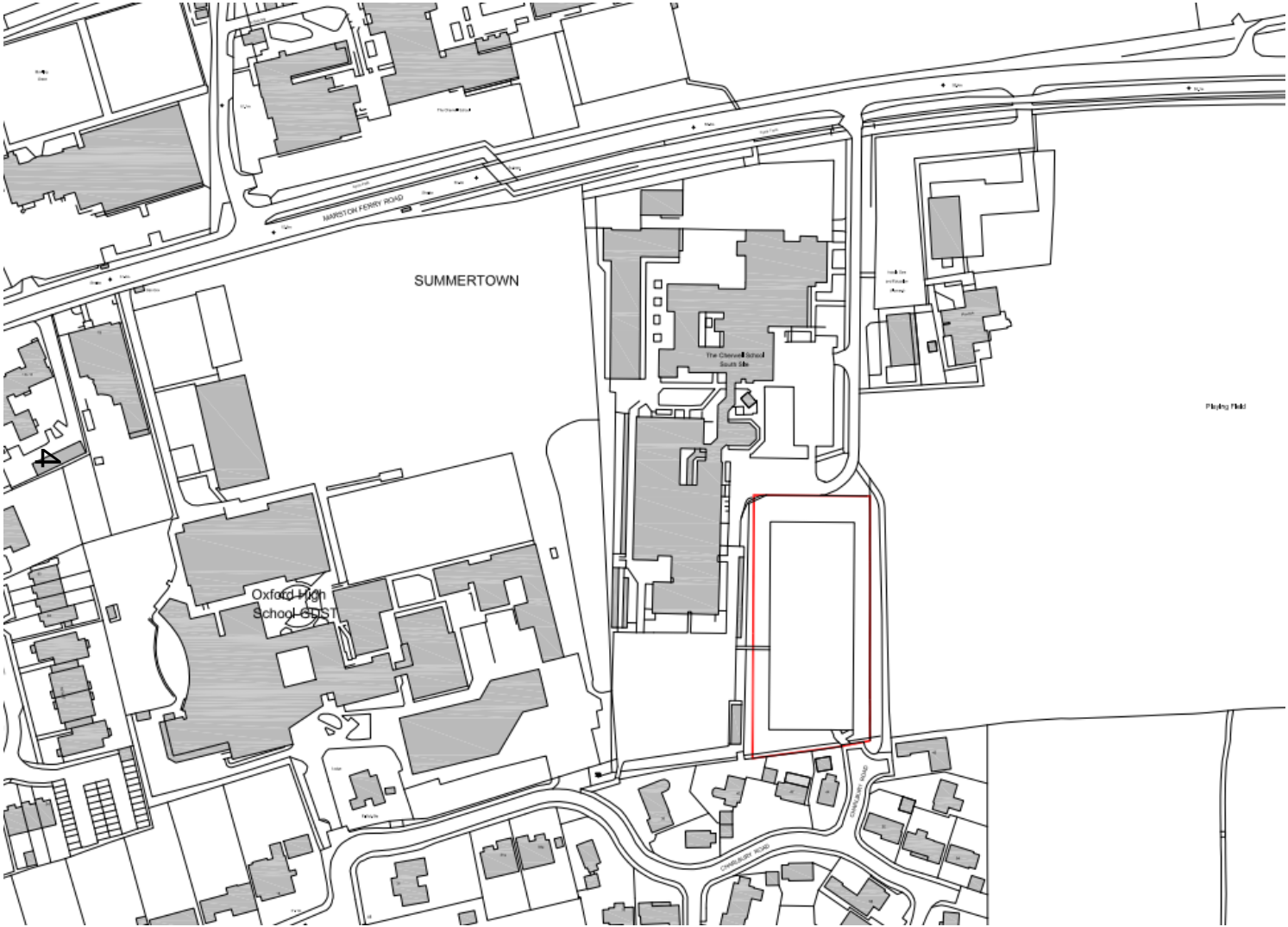
**Site Address: Land North of Charlbury
Road**

www.oxford.gov.uk



Agenda Item 3

Site Location Plan



www.oxford.gov.uk



Existing Site Plan



— = Redline Application Boundary

Site Photos – View South towards Cherwell School



i.gov.uk



**OXFORD
CITY
COUNCIL**



View south towards Charlbury Road

d.gov.uk



**OXFORD
CITY
COUNCIL**



Side of Tennis Courts (southern boundary)



d.gov.uk



**OXFORD
CITY
COUNCIL**



Site Entrance – Charlbury Road



Entrance – Approach to Site

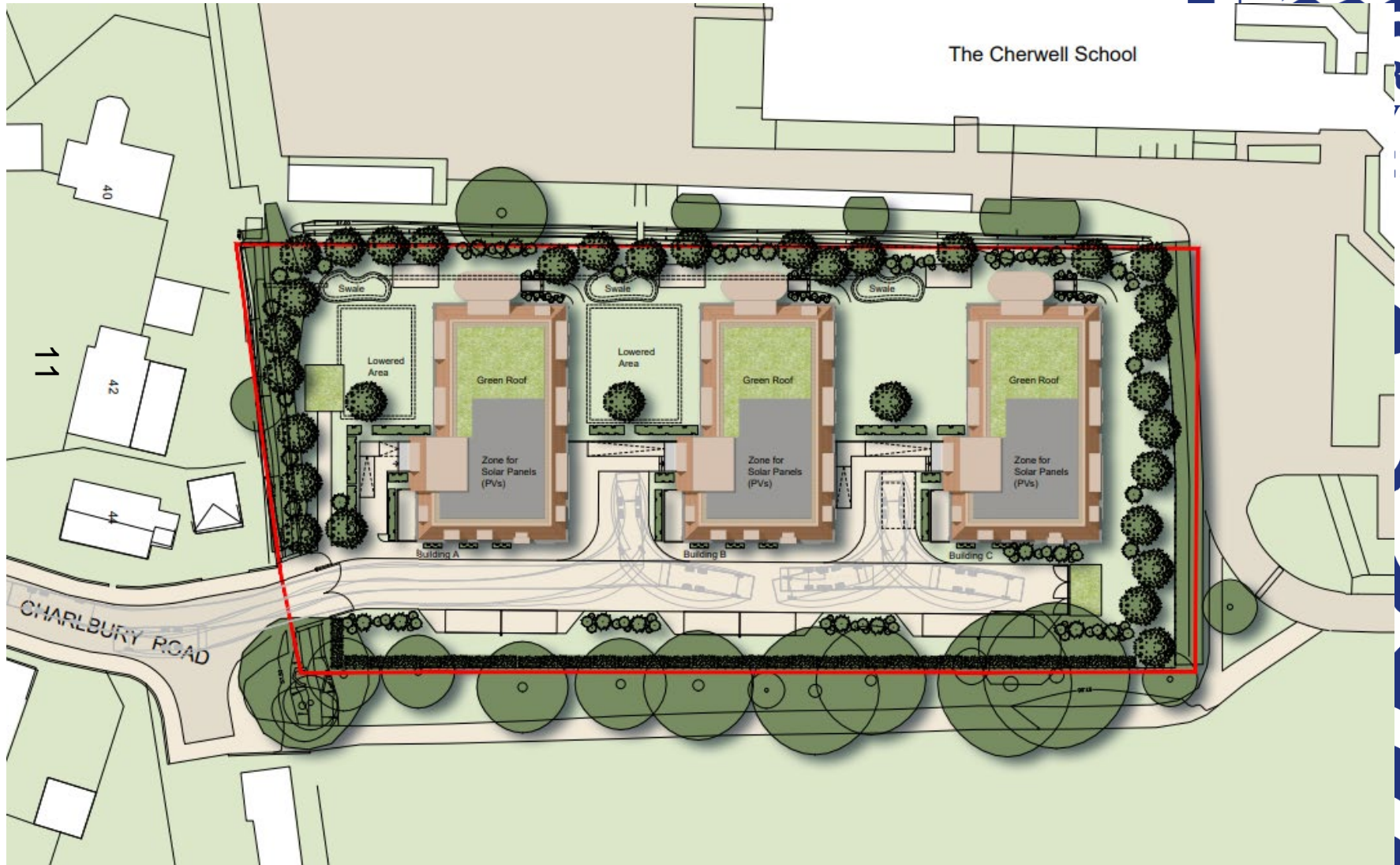
[oxford.gov.uk](https://www.oxford.gov.uk)



**OXFORD
CITY
COUNCIL**



Proposed Block Plan

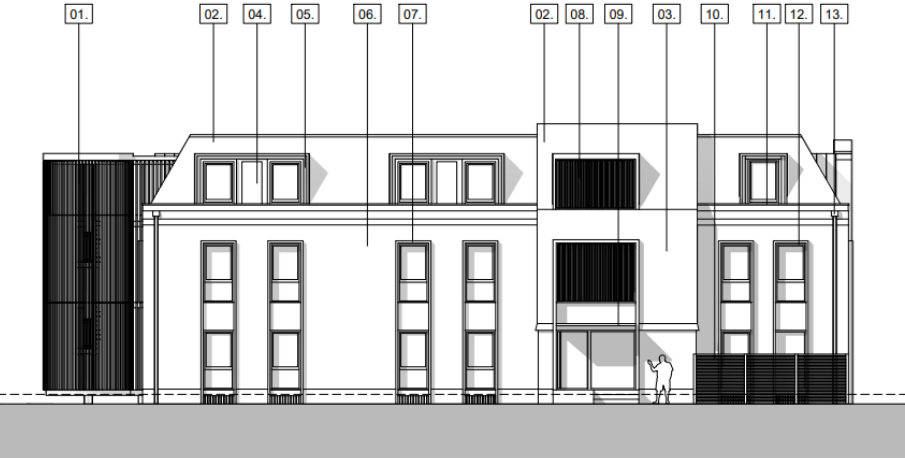


Proposed Elevations

gov.uk



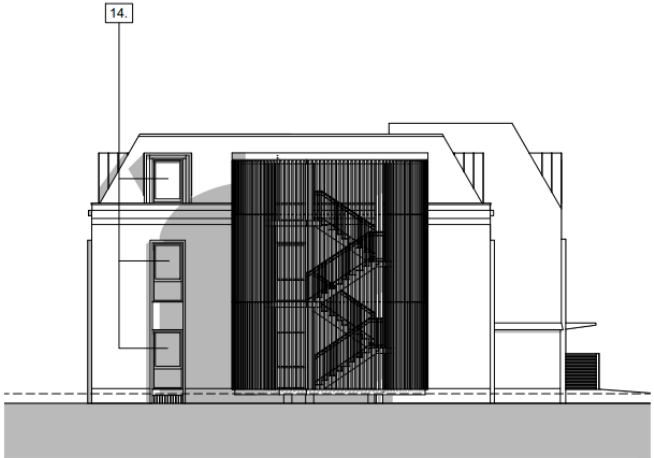
**OXFORD
CITY
OUNCIL**



Proposed South Elevation

Proposed East Elevation

12

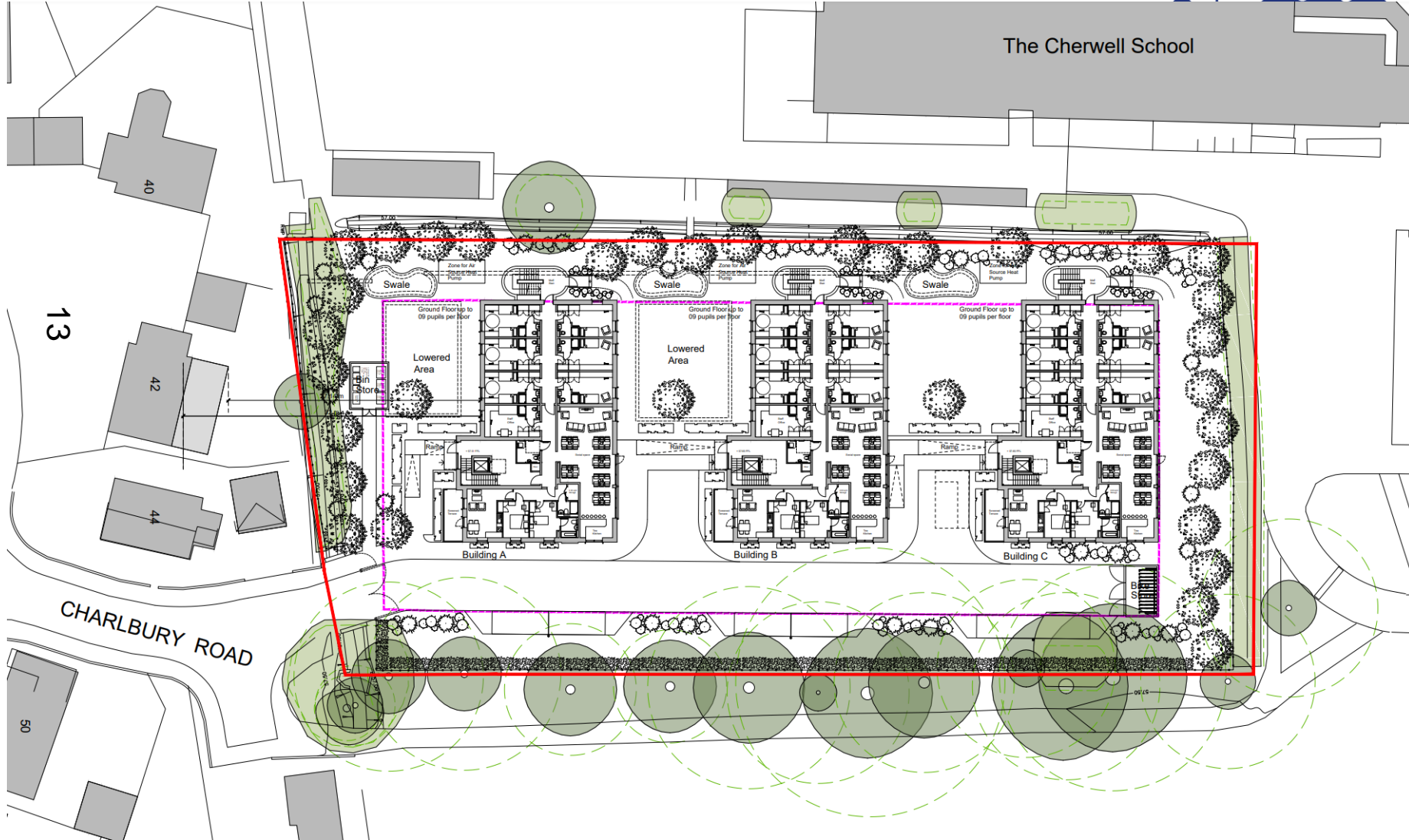


Proposed North Elevation

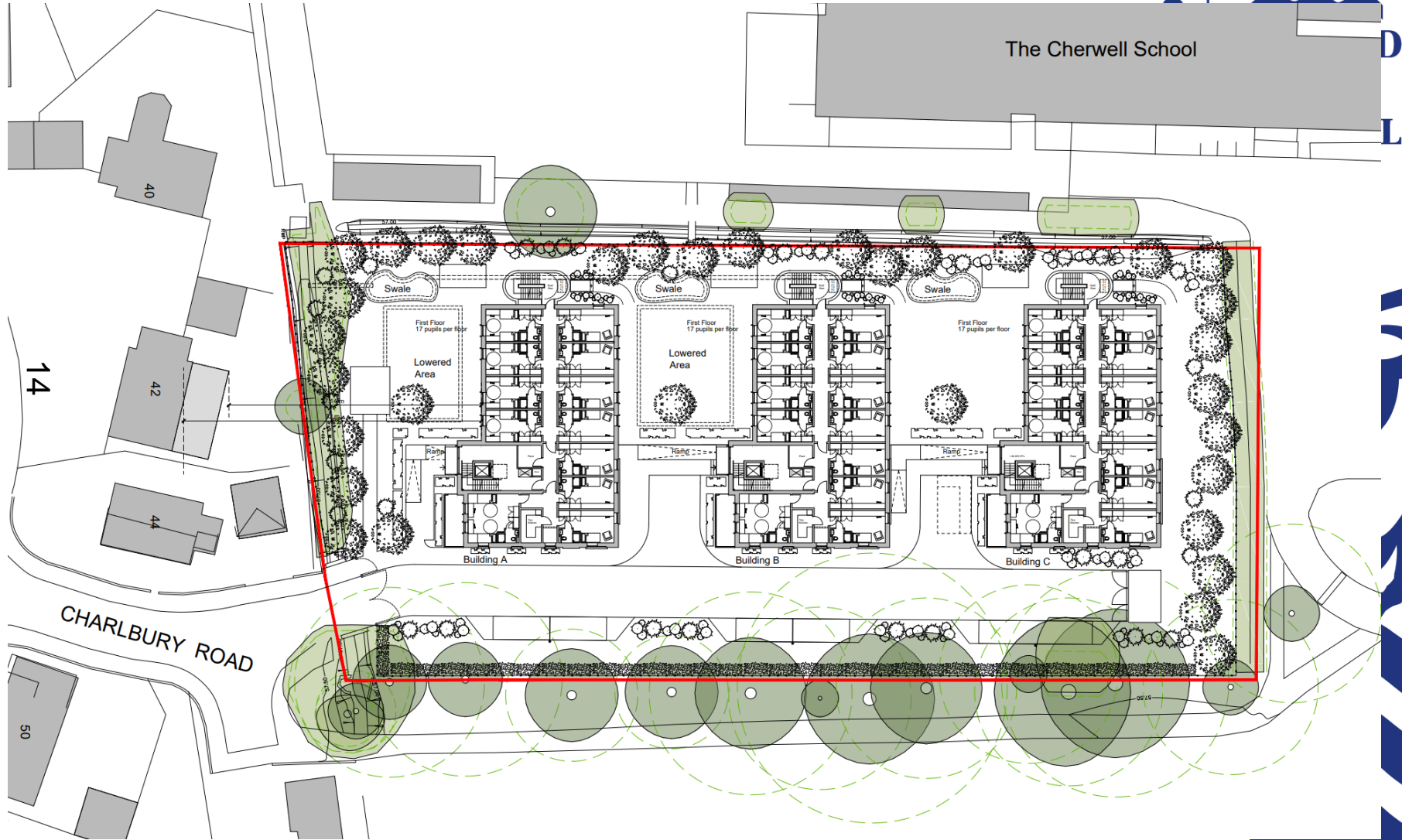
Proposed West Elevation



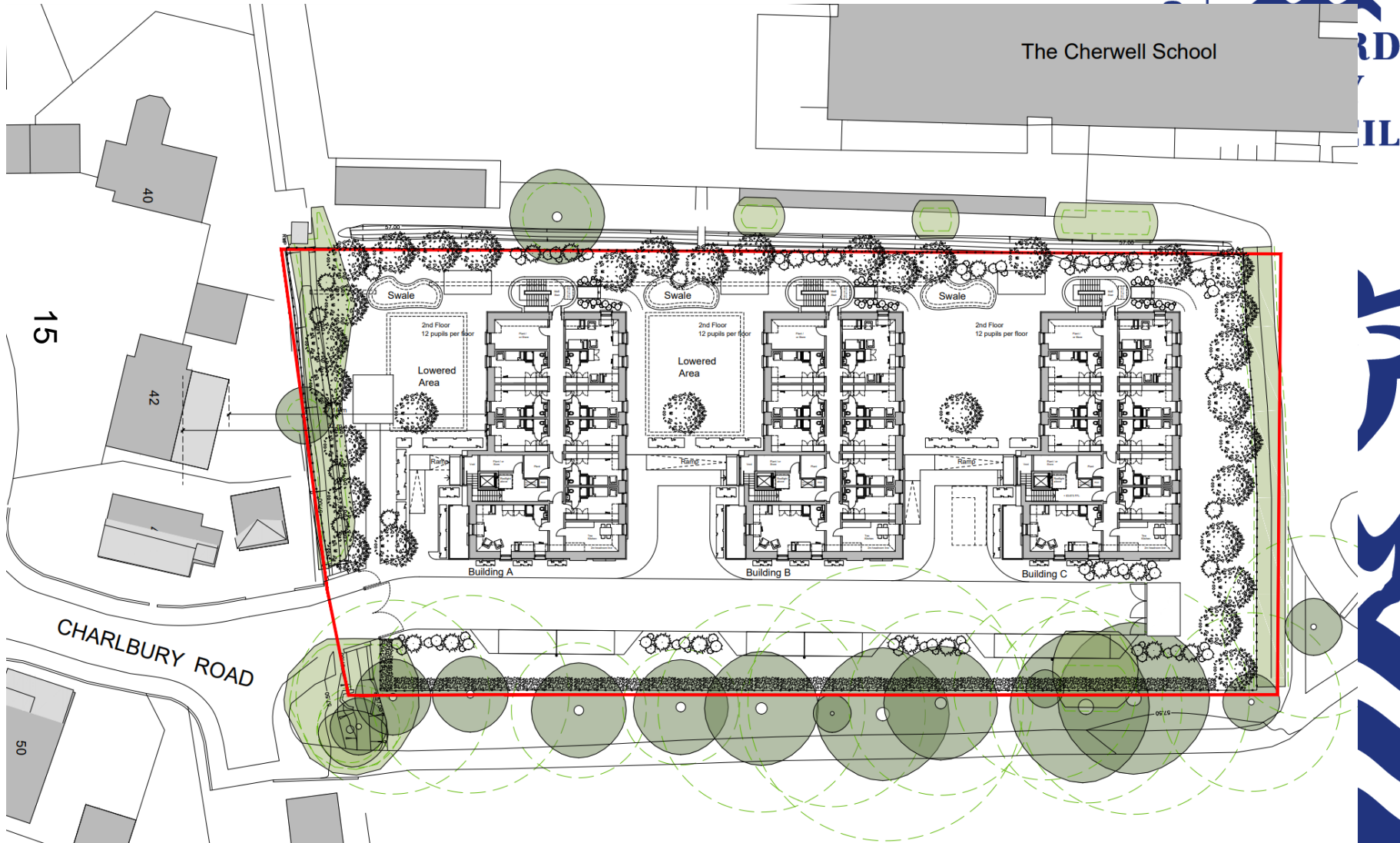
Ground Floor Plan



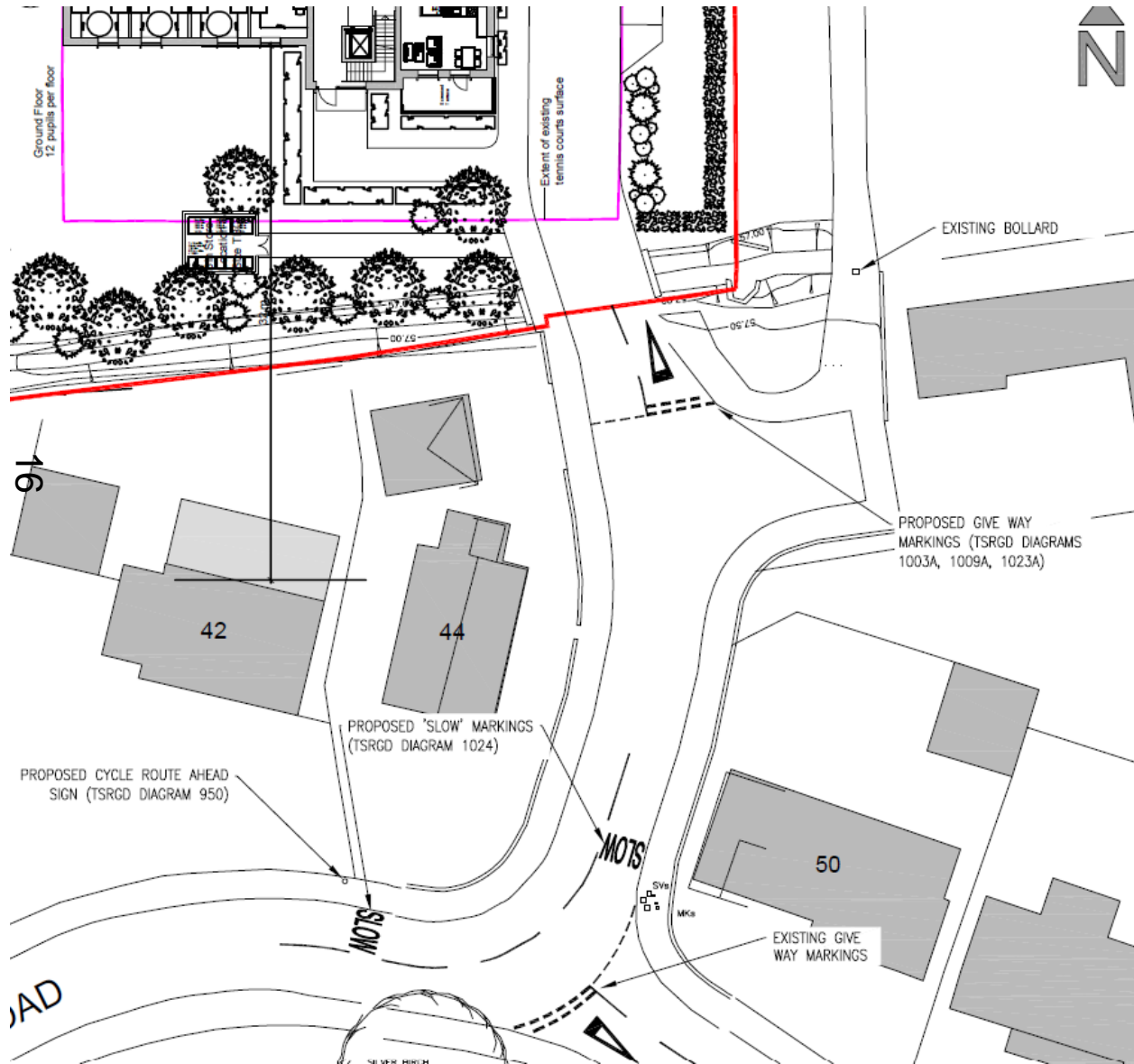
First Floor Plan



Second Floor Plan



Proposed Off-site Vehicular Access Improvements



www.oxford.gov.uk



Proposed Visuals – Charlbury Road



17

View from Site Entrance



View from Cherwell School Access



This page is intentionally left blank