

Oxford City Planning Committee Presentation

23/02214/FUL

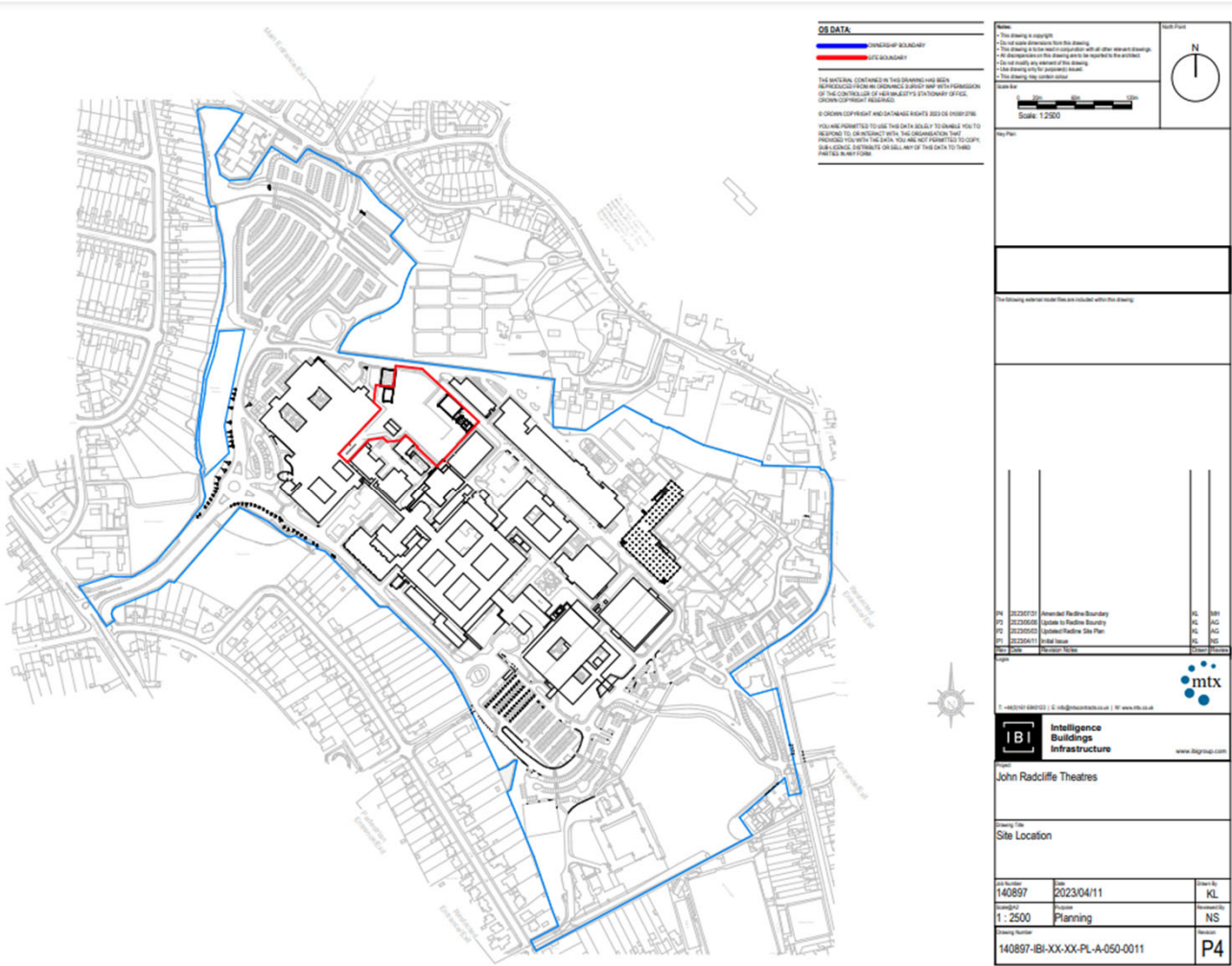
The John Radcliffe Hospital

www.oxford.gov.uk



Agenda Item 3

Site Location Plan



6



View towards the site from internal access road (beside helipad)



www.oxford.gov.uk



View of the front of the site and Eye Hospital



www.oxford.gov.uk



View of the site Eye Hospital to the right, OMRI and FMRIB centre, ACIU to left



www.oxford.gov.uk



View of the site, existing plant foreground left and ACIU



View along internal access Road (Wolfson Building on the left, site on the right)



www.oxford.gov.uk



View of the siting of the corridor link within the site into existing Childrens Hospital (left) and Eye Hospital buildings (right)



www.oxford.gov.uk



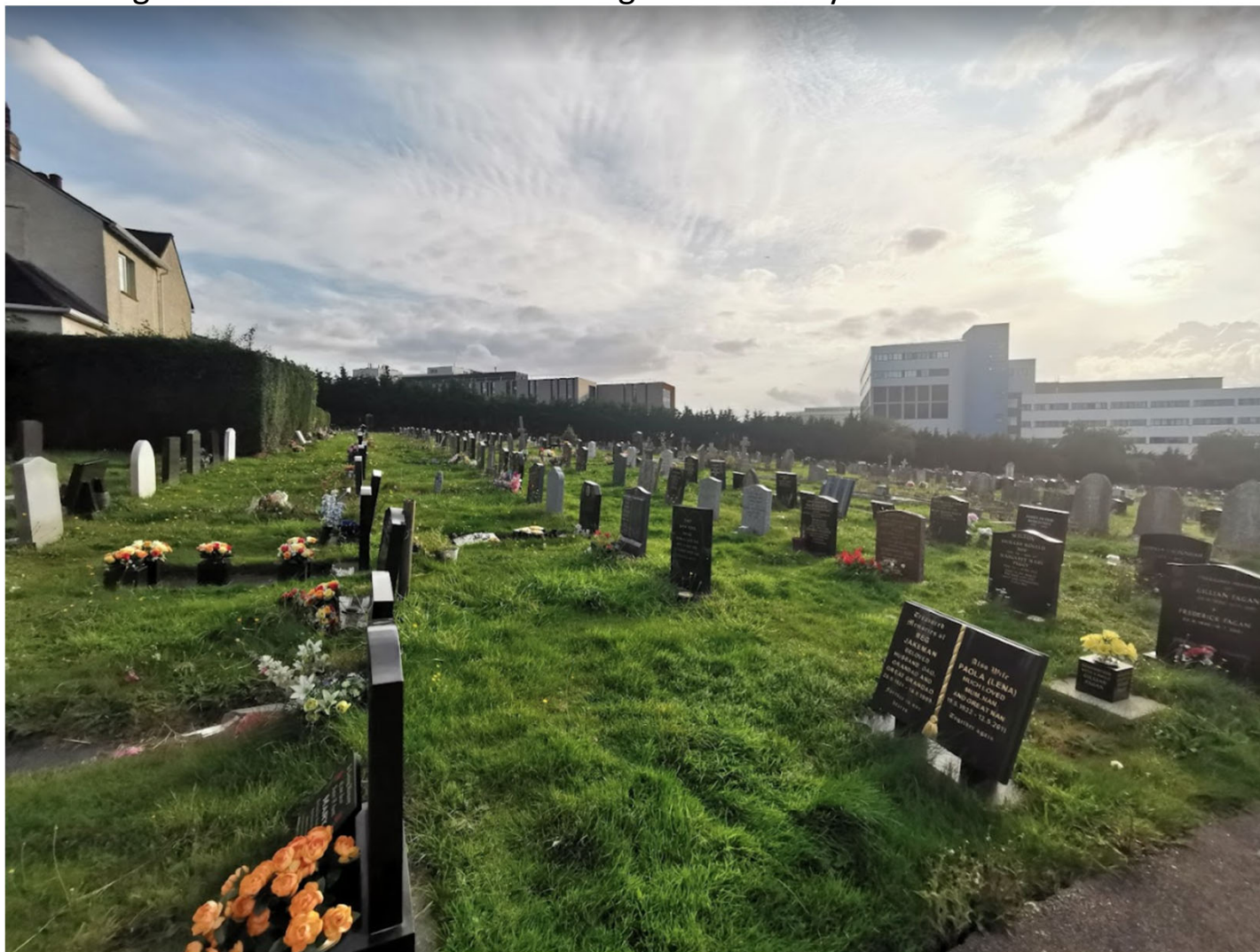
View from within the Headington Cemetery



www.oxford.gov.uk



Wide angle view from within the Headington Cemetery



www.oxford.gov.uk



View from Ingle Close (north)



www.oxford.gov.uk



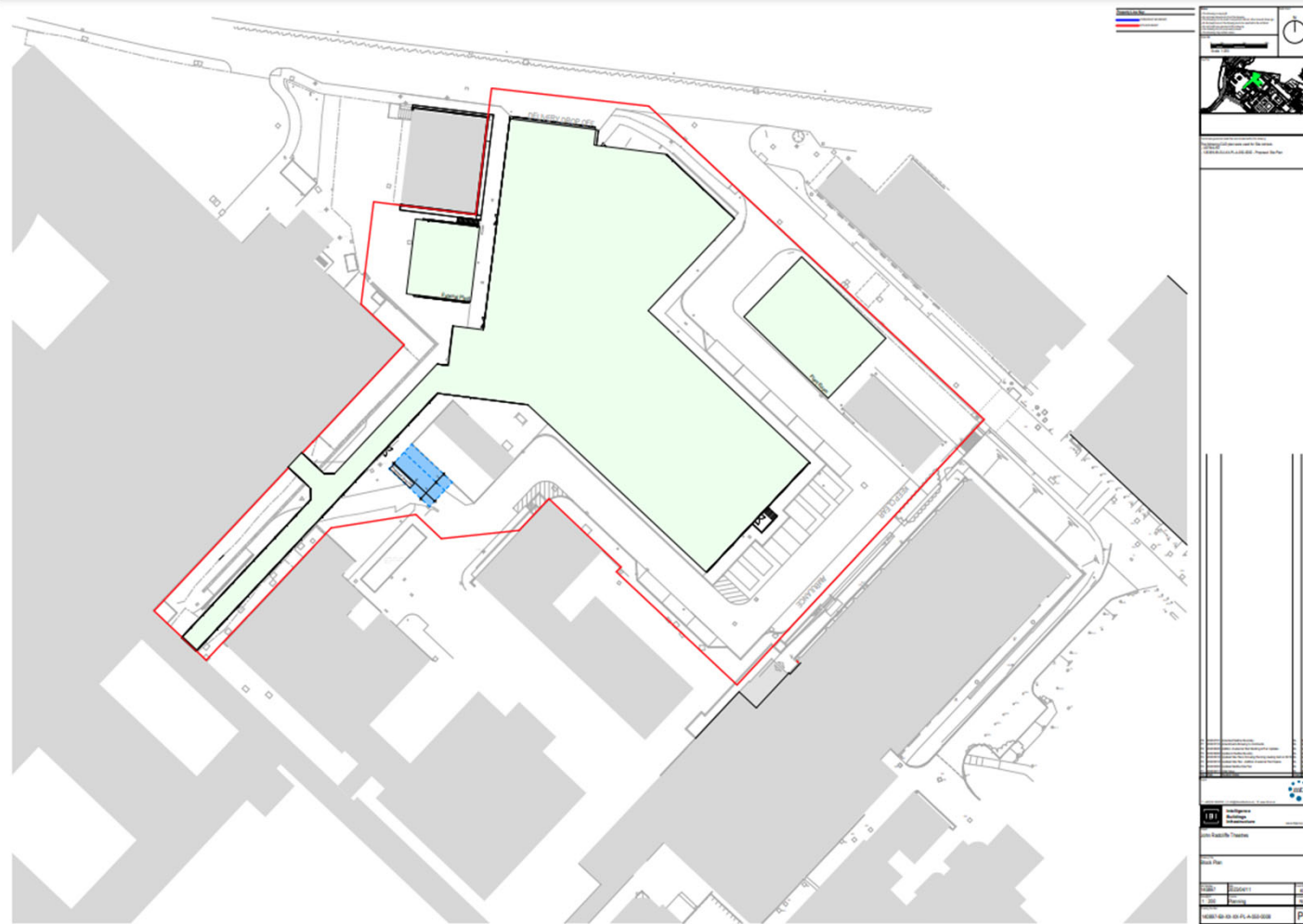
View from corner of Coniston Ave and Ambleside Drive



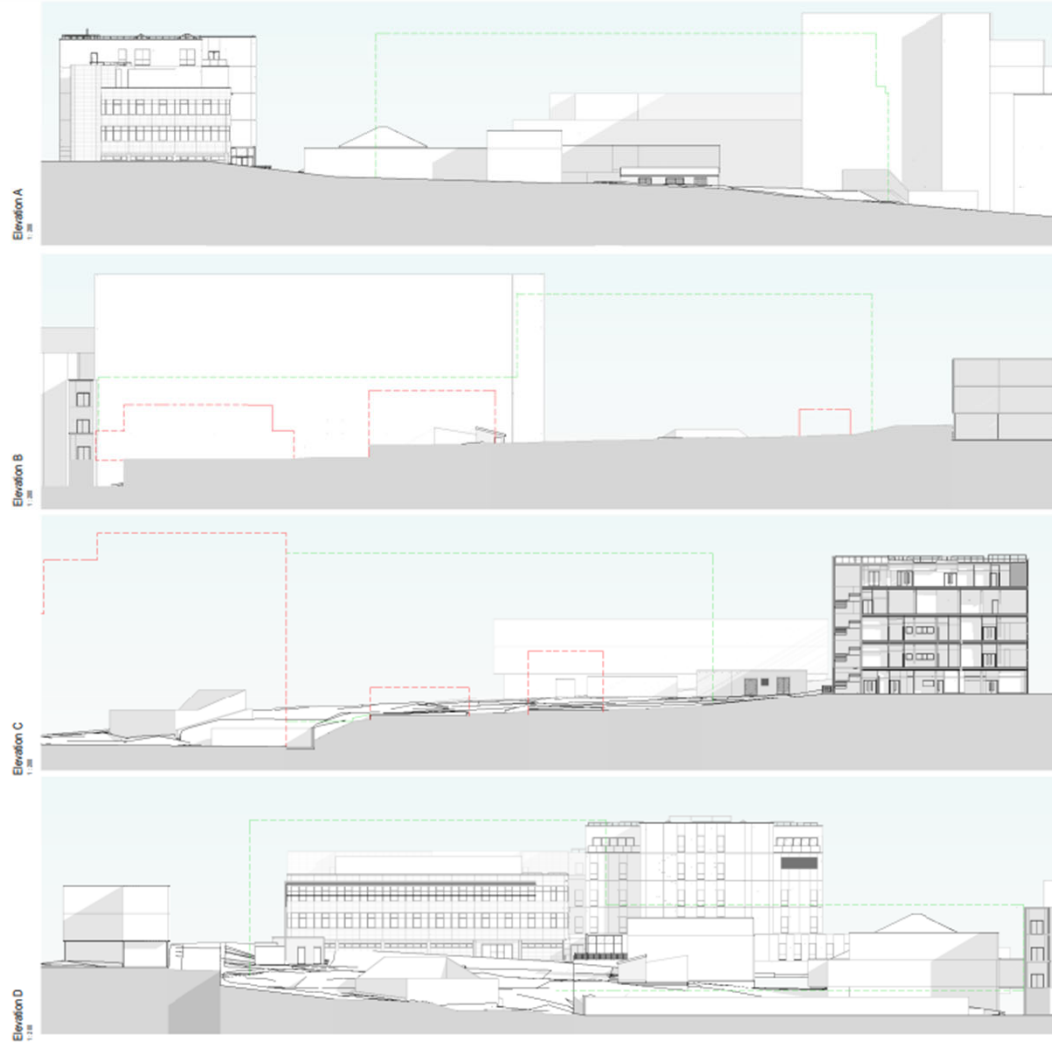
www.oxford.gov.uk



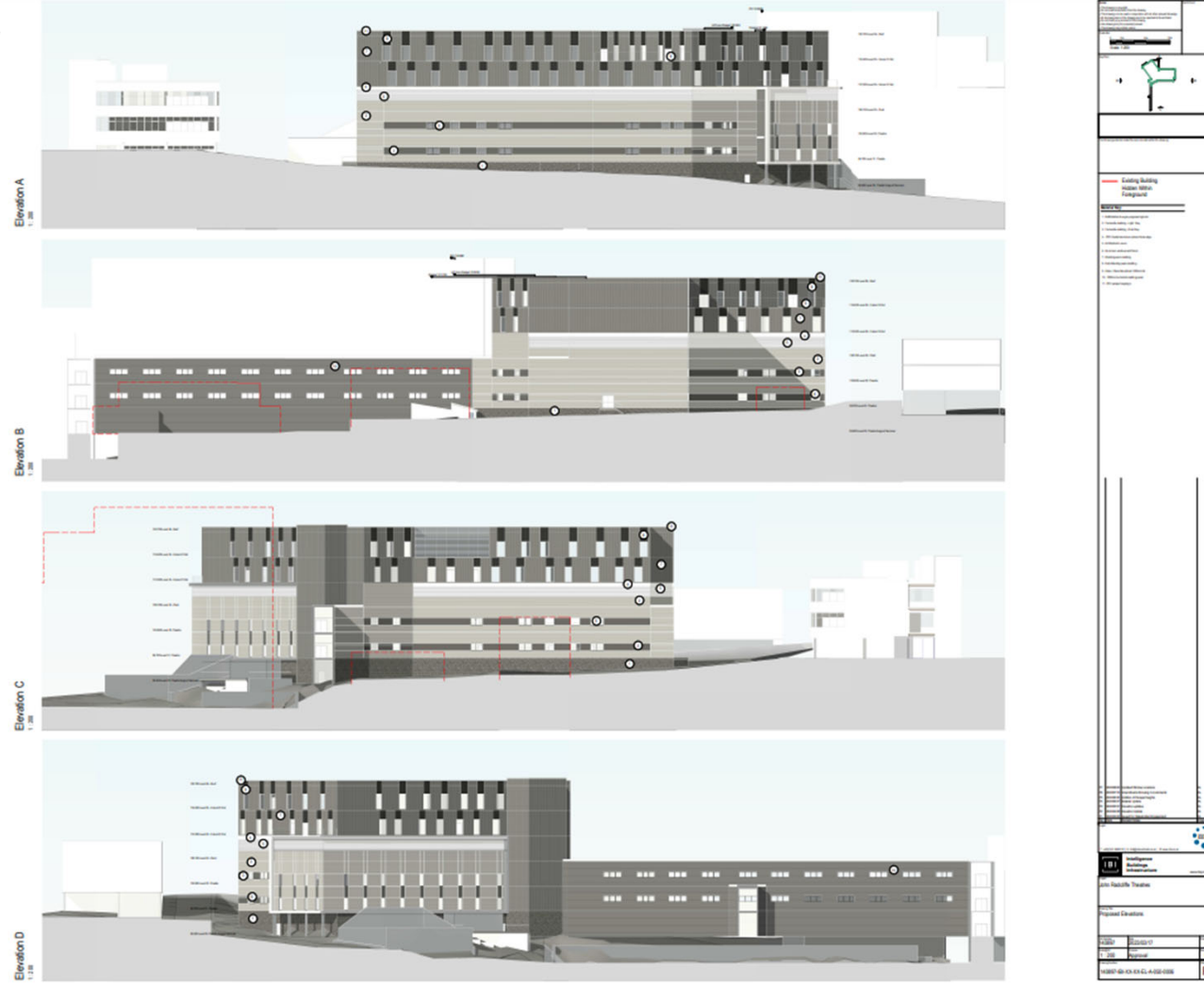
Proposed Block Plan



Existing Elevations



Proposed Elevations



www.oxford.gov.uk





CGI view of the front/ side elevations



vauk



CGI view from internal access road (Wolfson Building to left hand side)



vauk



CGI view of rear elevations



vauk



CGI – Internal courtyard showing link corridor

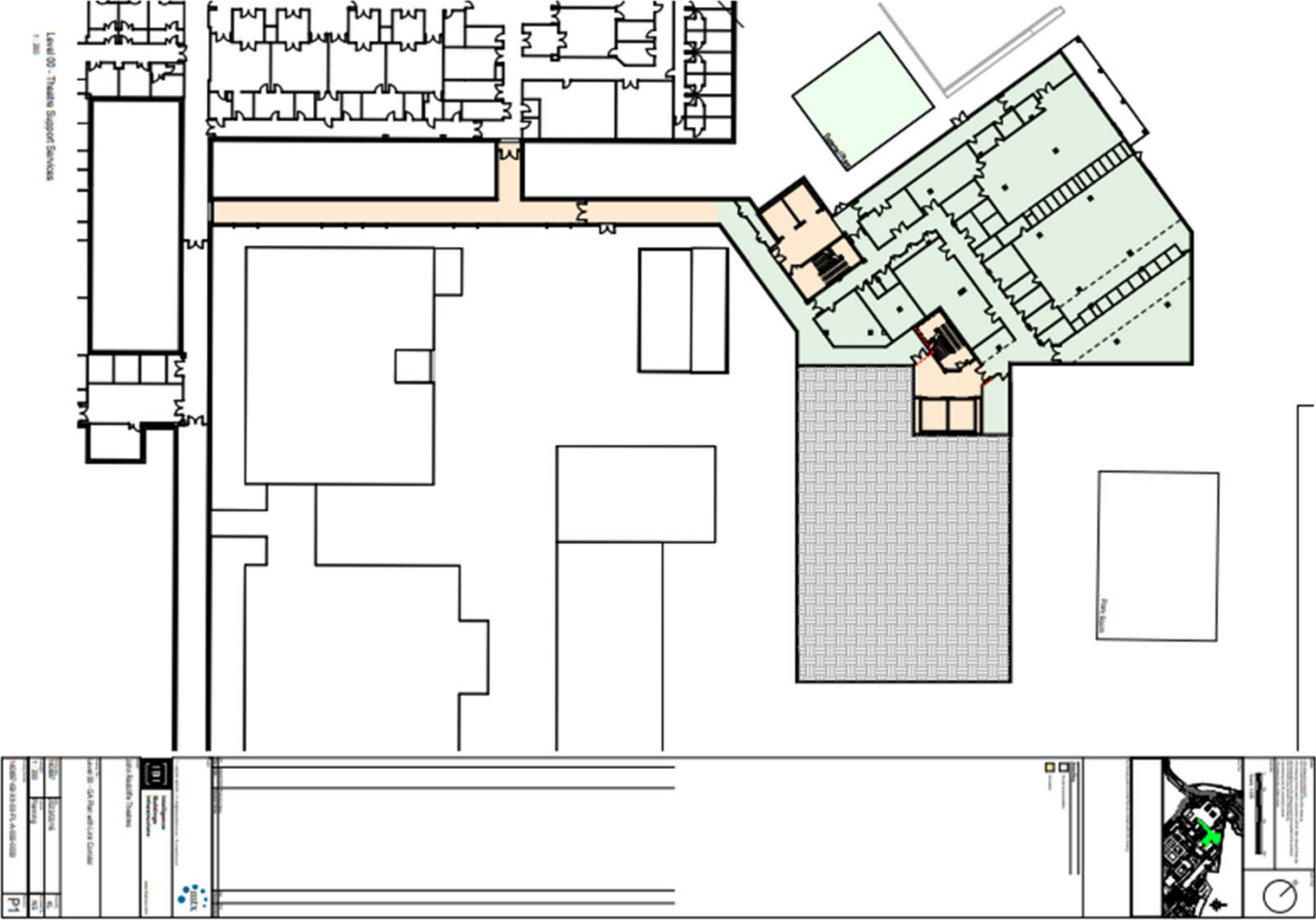


23

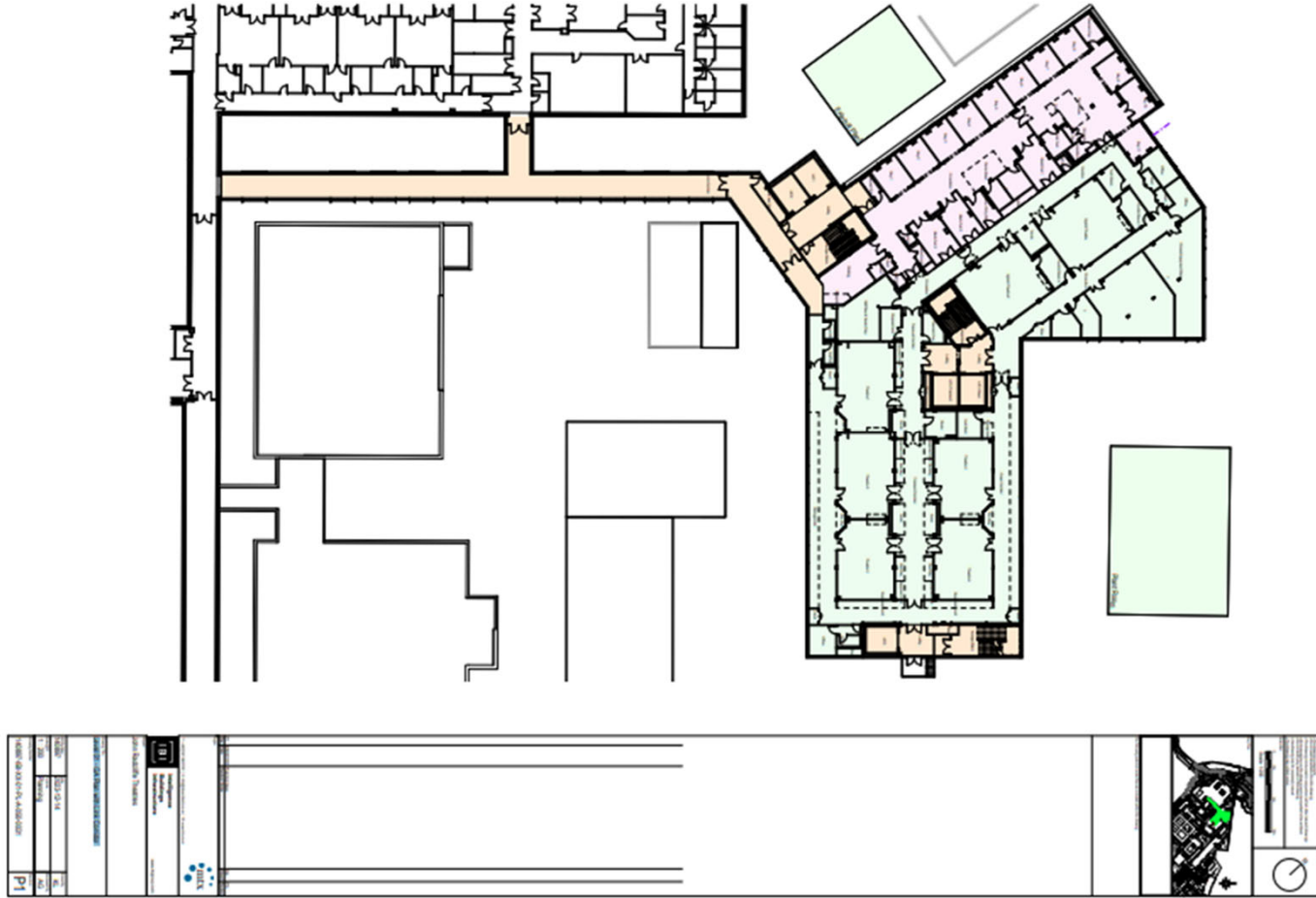
www.oxford.gov.uk



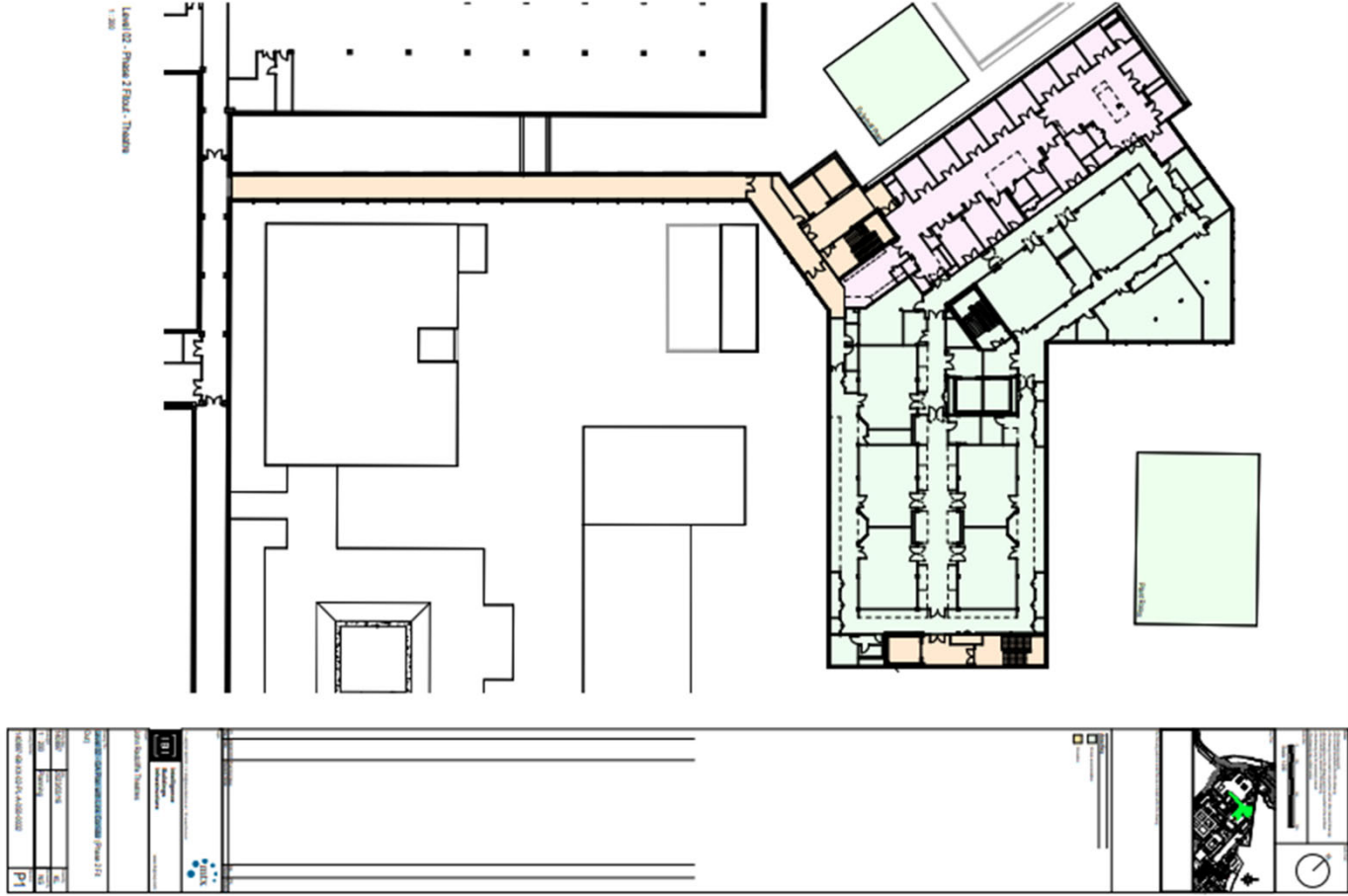
Proposed Level 00 - GA Plan with Link Corridor



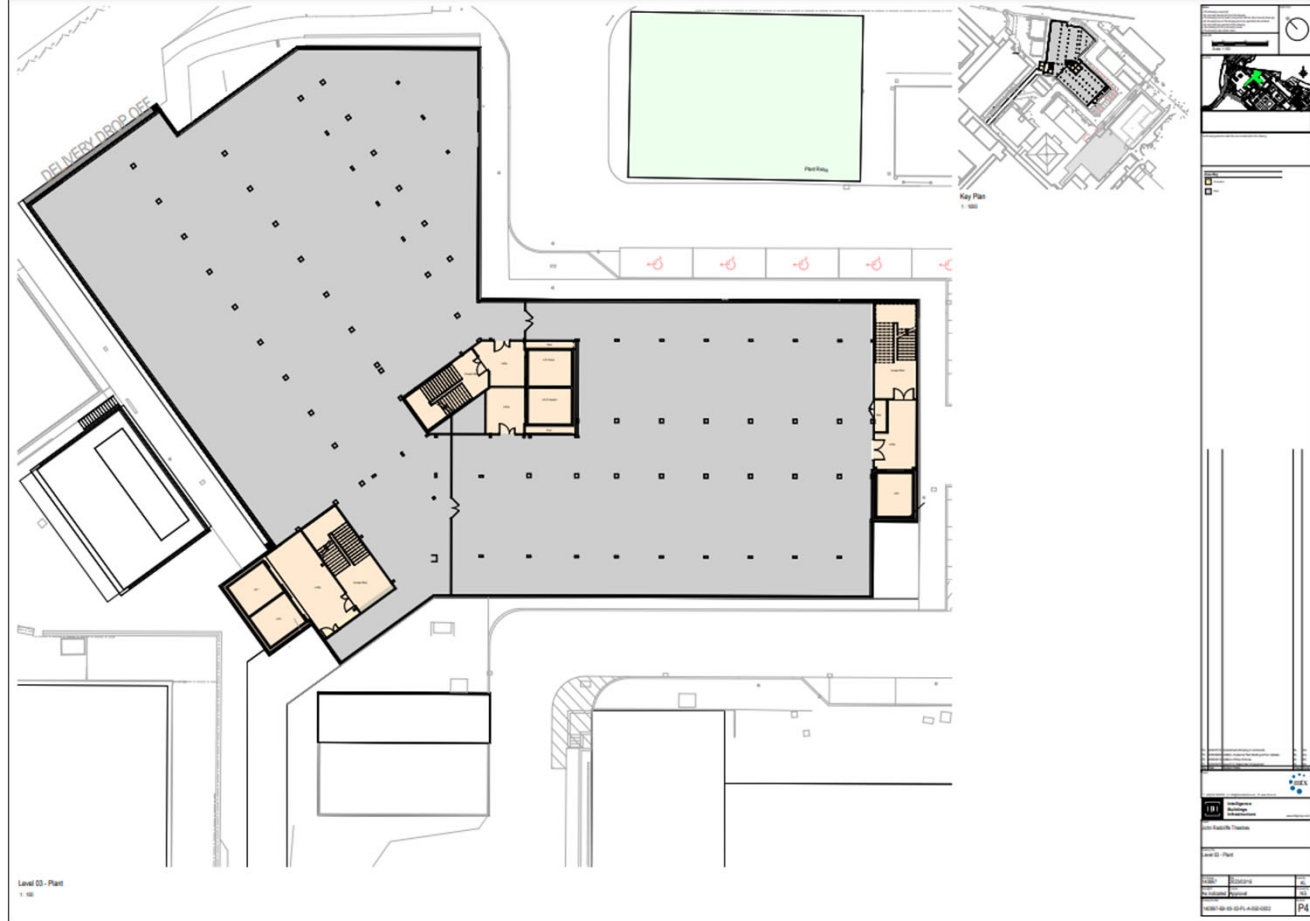
Proposed Level 01 - GA Plan with Link Corridor



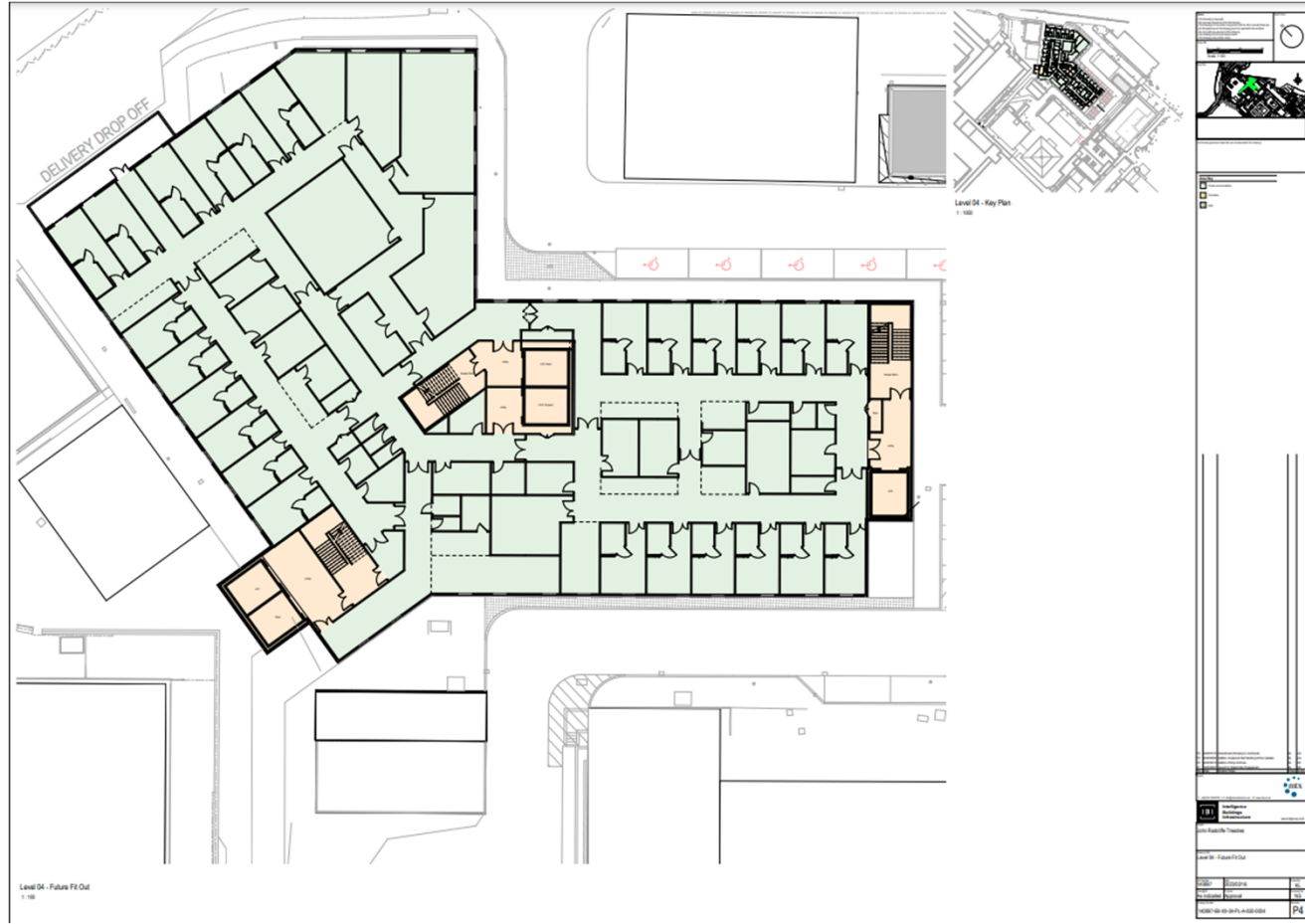
Proposed Level 02 - GA Plan with Link Corrido



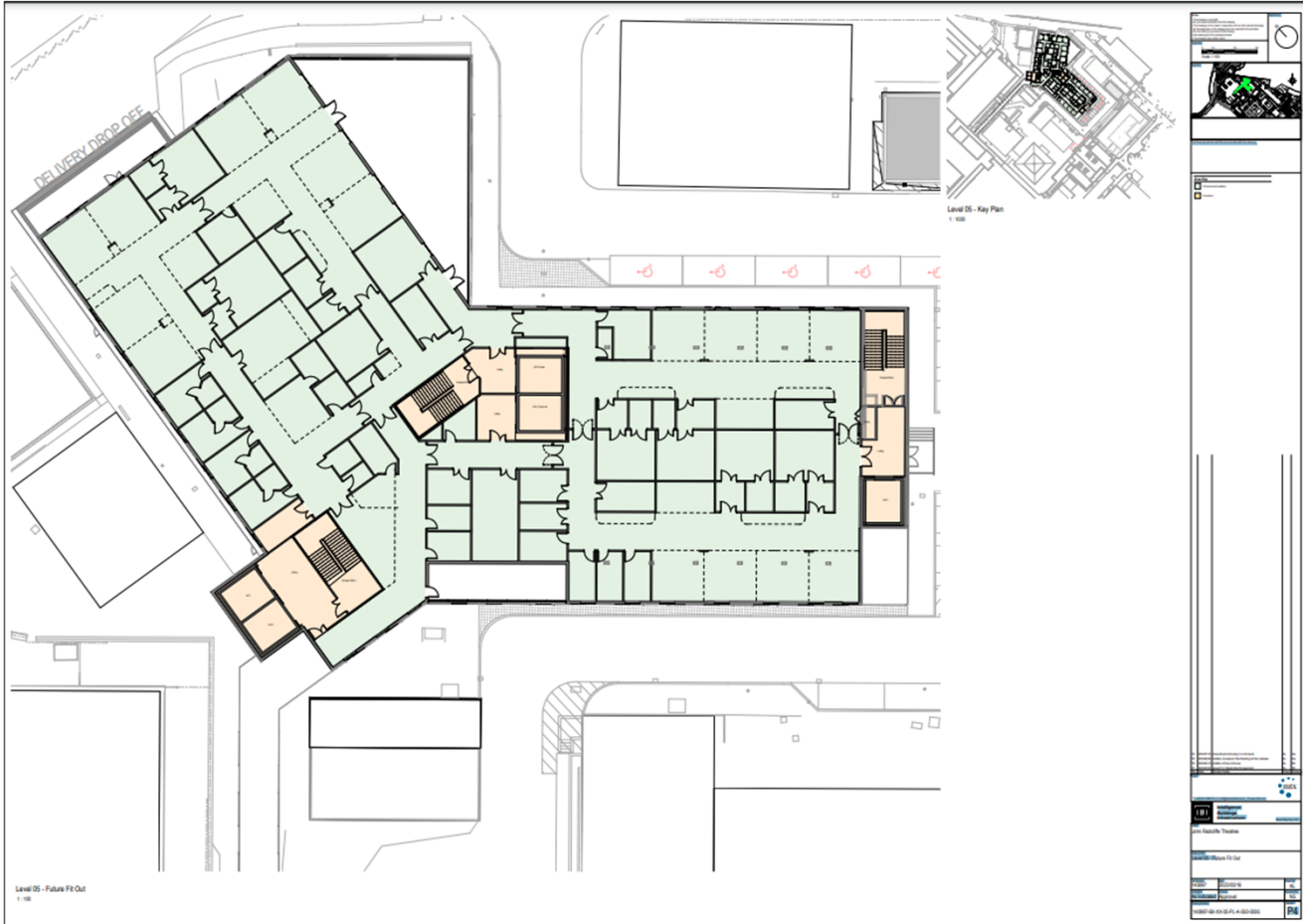
Proposed Level 3 (plant)



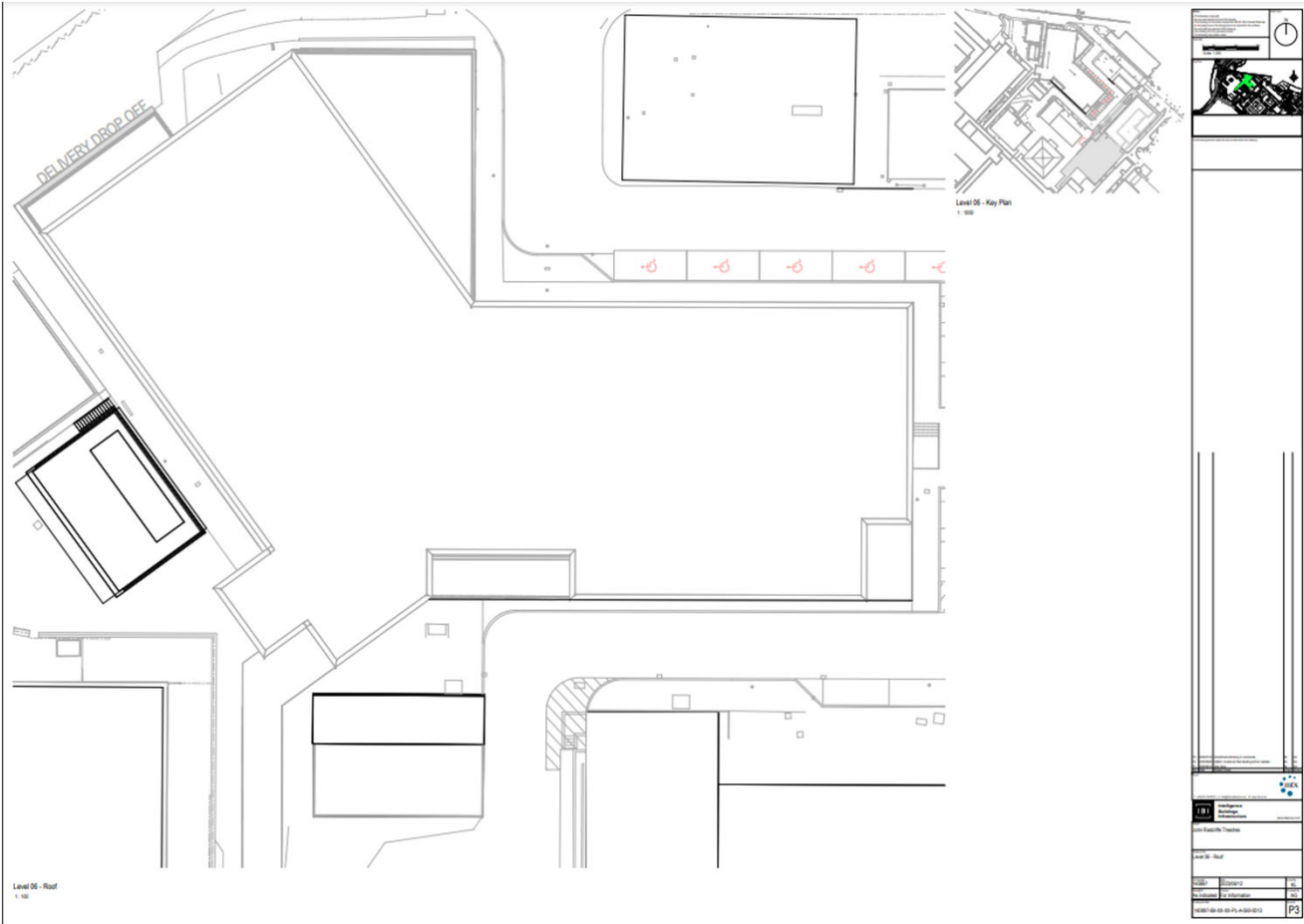
Proposed Level 4



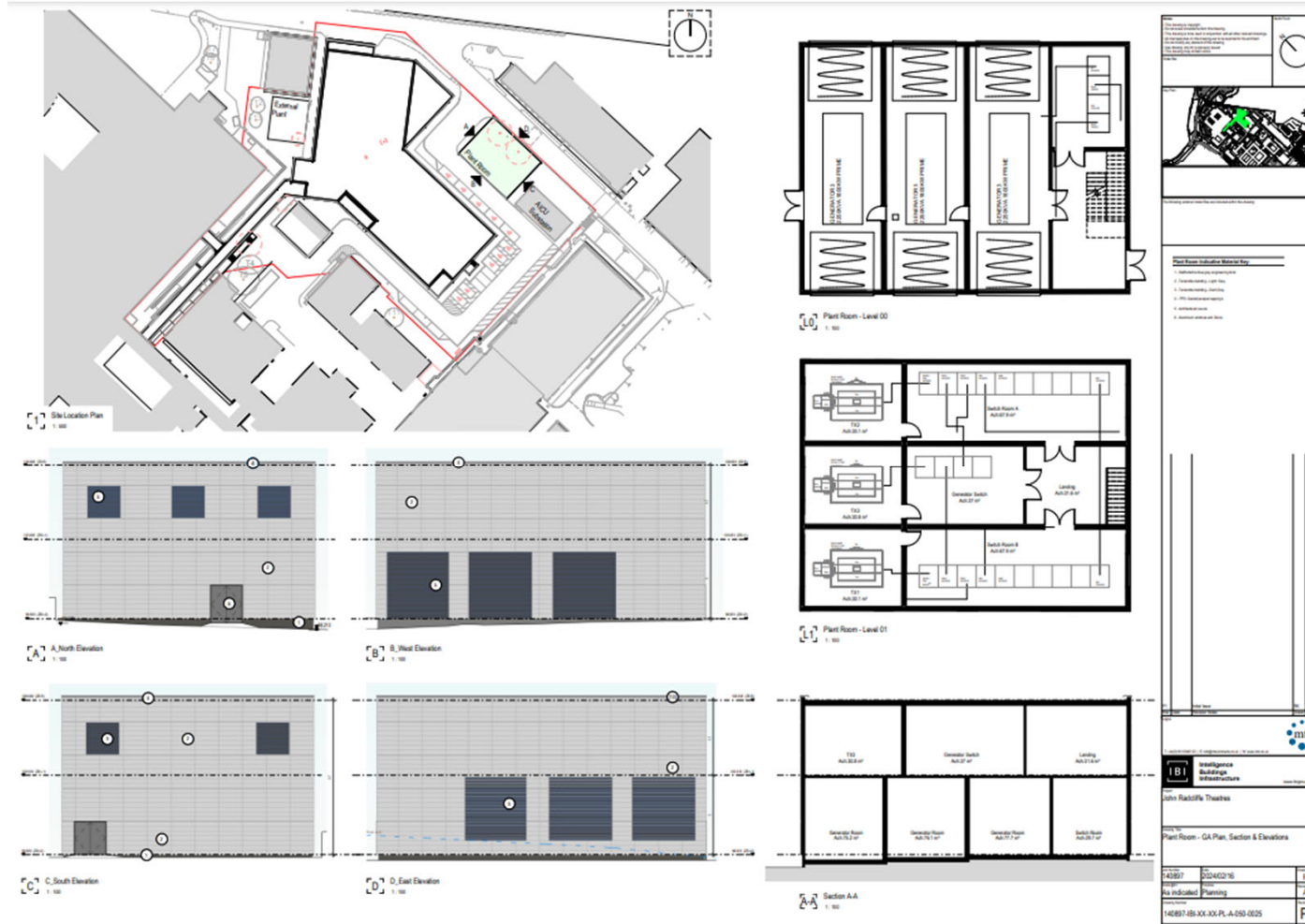
Proposed Level 5



Proposed Roof Plan



Proposed plans and elevation of the Plant room building



Long distance view



32

Photomontage 4 – Existing Hospital
with New development CGI
Photomontage Overlay



Photo of Existing Hospital
from Elsfield View Cone

www.oxford.gov.uk



High level long distance view

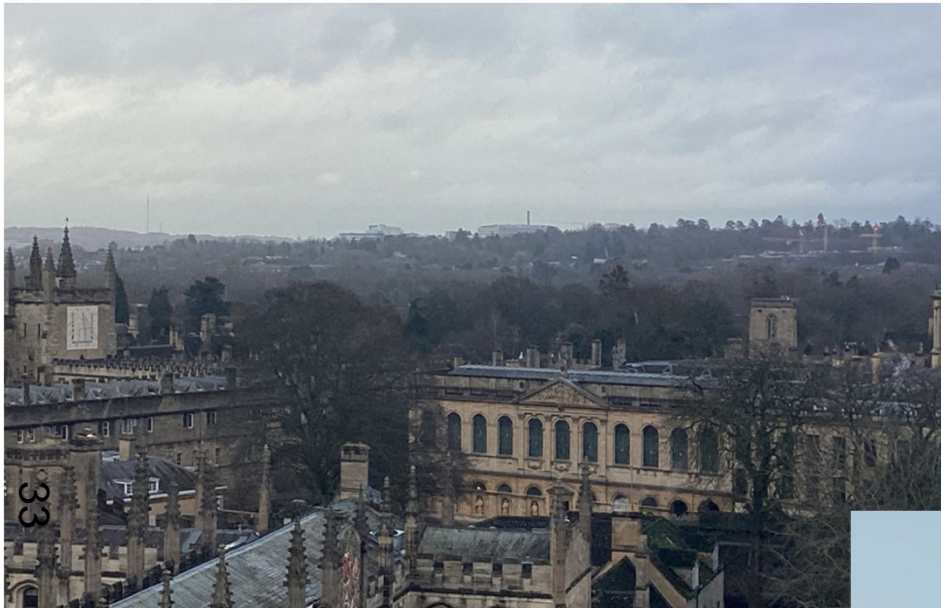
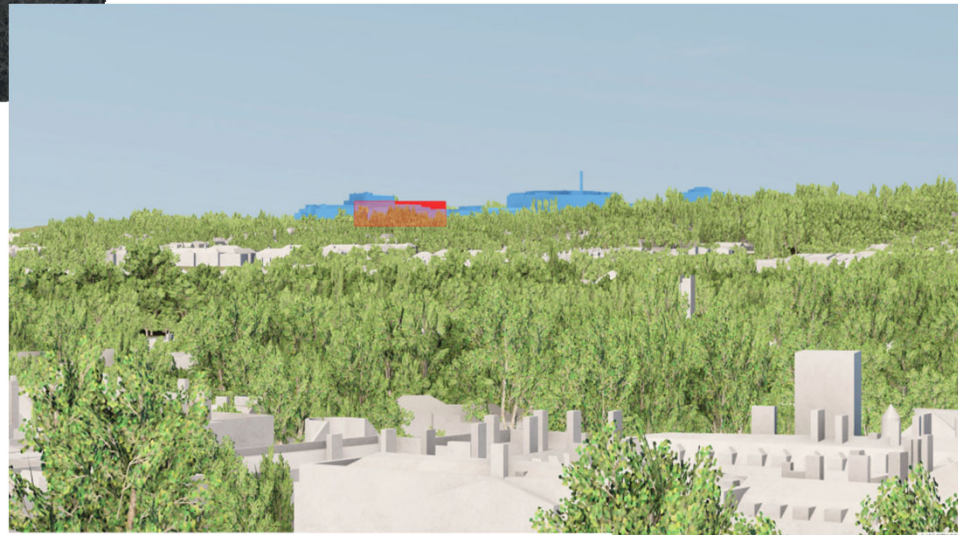


Photo – Existing Hospital
from St Mary's Tower

www.oxford.gov.uk



Modelled View - proposed
development; Element visible
shown as solid red



IBI GROUP

Proposed Development

JR Hospital Campus

Modular Theatre Expansion
Client - Oxford University Hospitals NHS Foundation



This page is intentionally left blank