

Oxford City Planning Committee Presentation

www.oxford.gov.uk



Reference Number: 23/01482/FUL

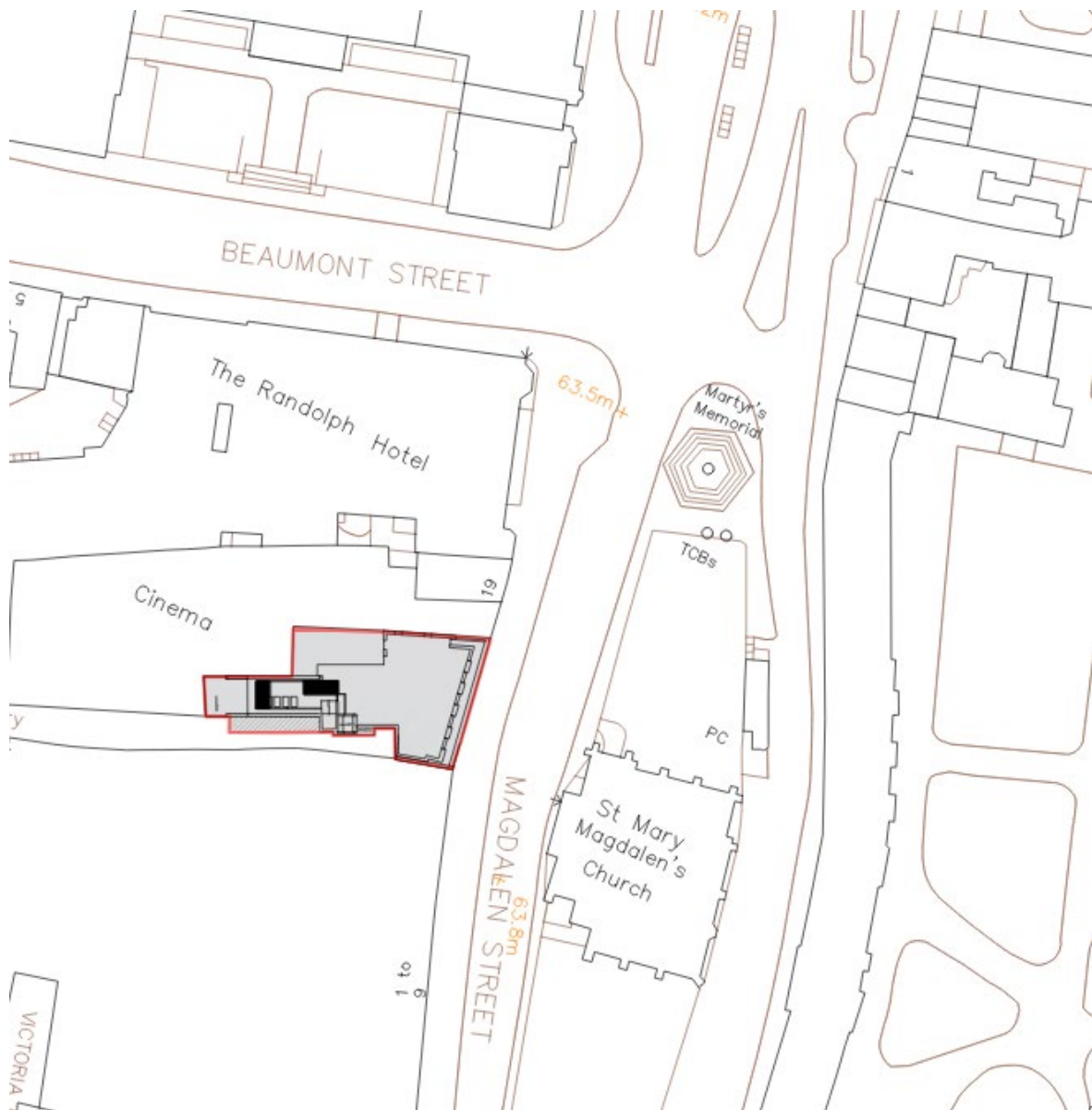
**Site Address: Oxenford House,
Magdalen Street**

153



Site Plan

154



www.oxford.gov.uk



Aerial Plan



www.oxford.gov.uk



Oxenford House



RD
Y
IL





Oxford House – View South West towards Site



www.oxford.gov.uk



**OXFORD
CITY
COUNCIL**



View North from Cornmarket Street



www.oxford.gov.uk



**OXFORD
CITY
COUNCIL**



View from Friars Entry



160

www.oxford.gov.uk



**OXFORD
CITY
COUNCIL**



View from Friars Entry

161



www.oxford.gov.uk

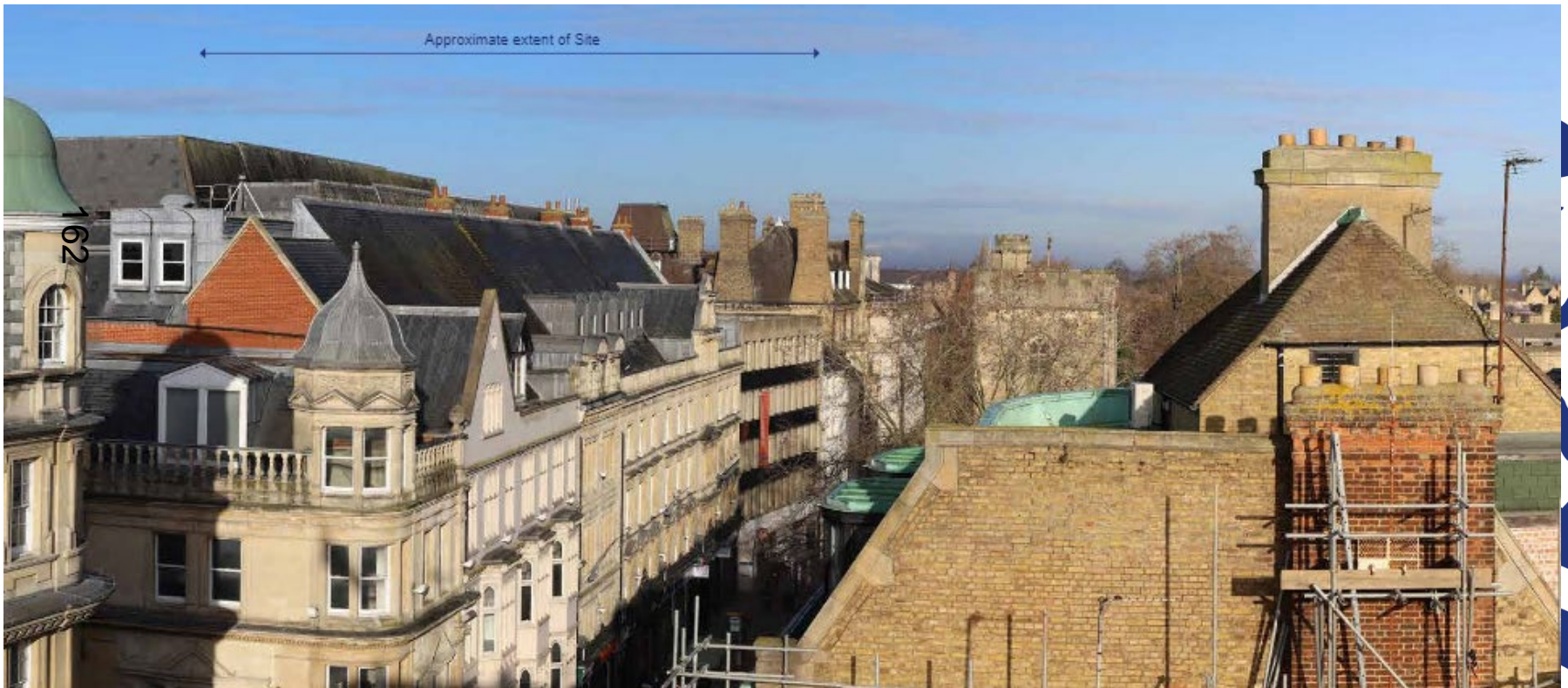


**OXFORD
CITY
COUNCIL**



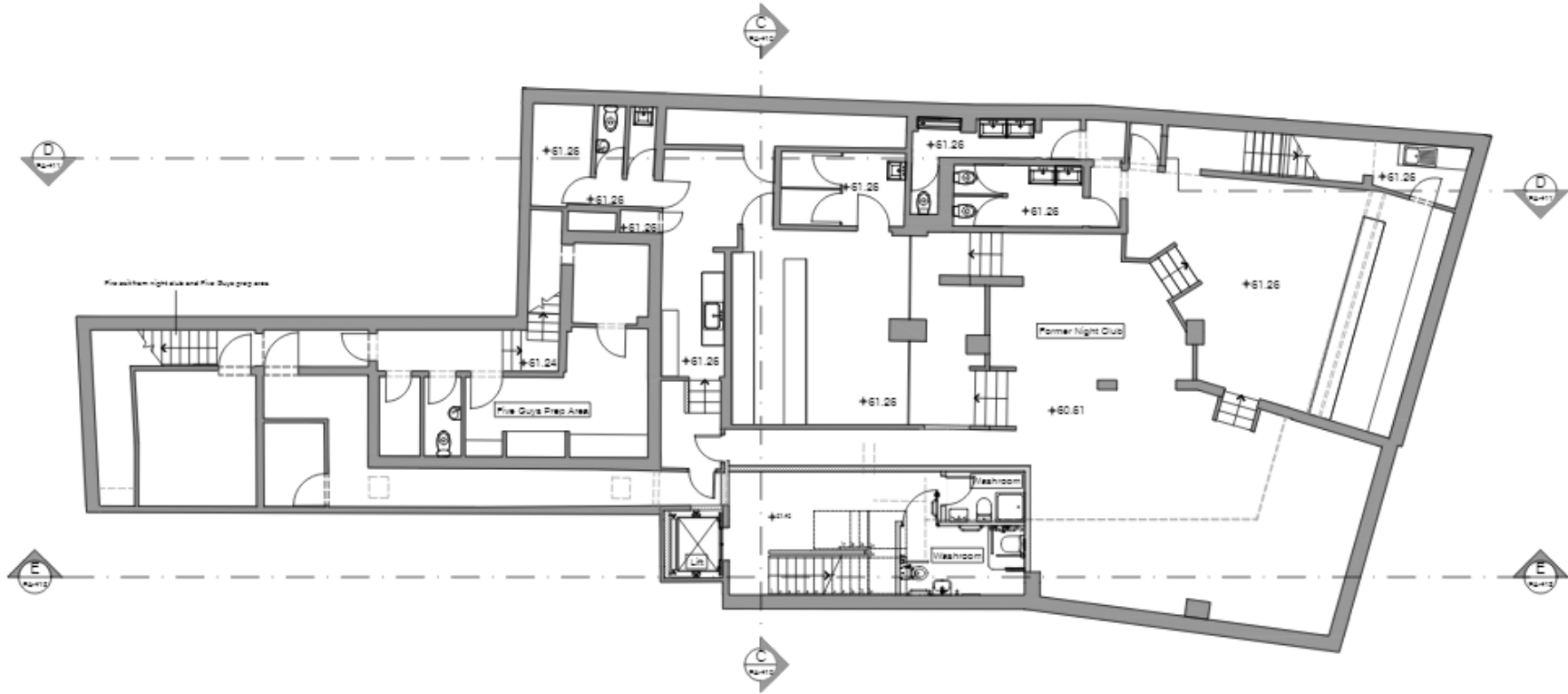
View from St Michael at the Northgate

www.oxford.gov.uk

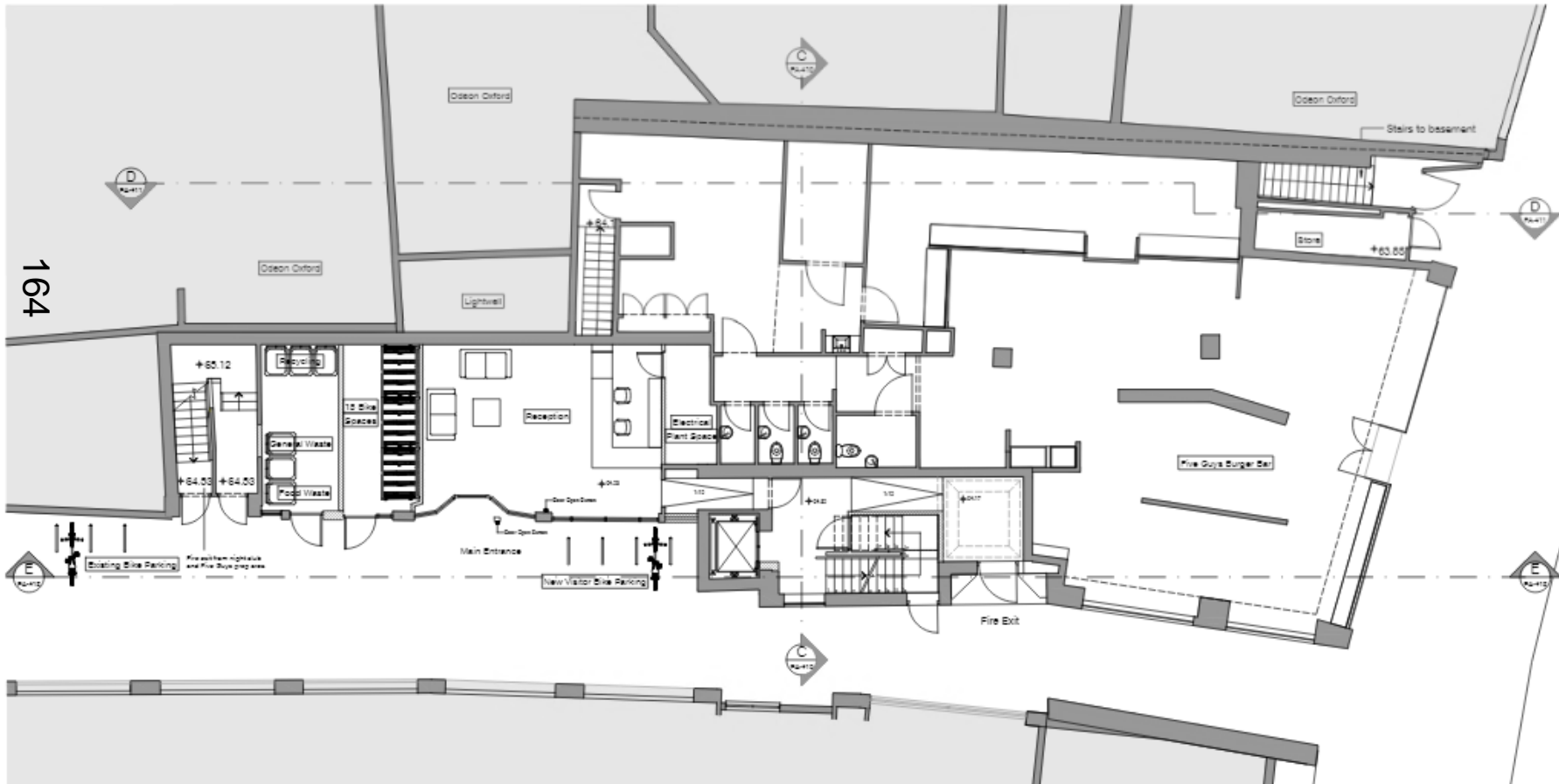


Proposed Basement Plan

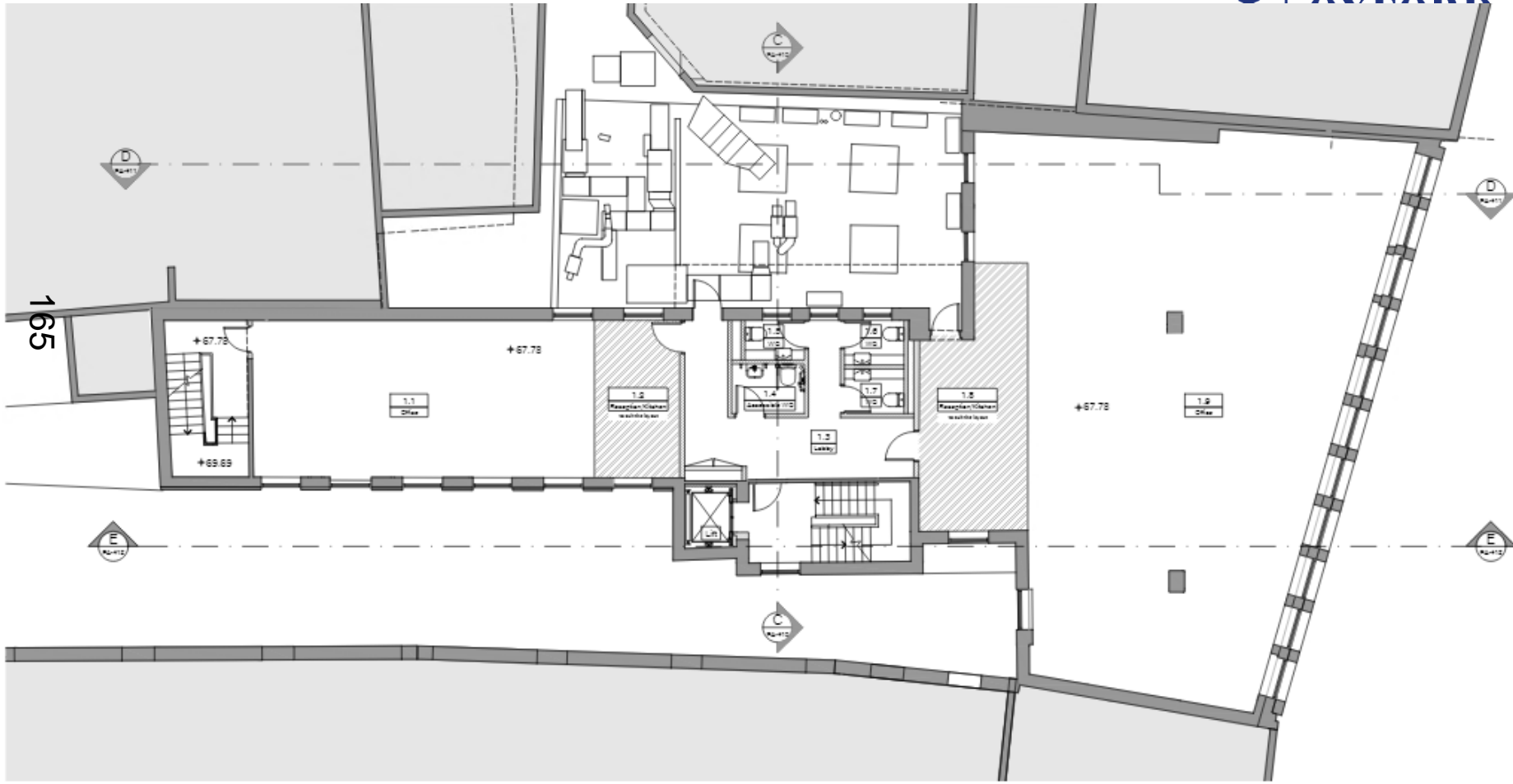
163



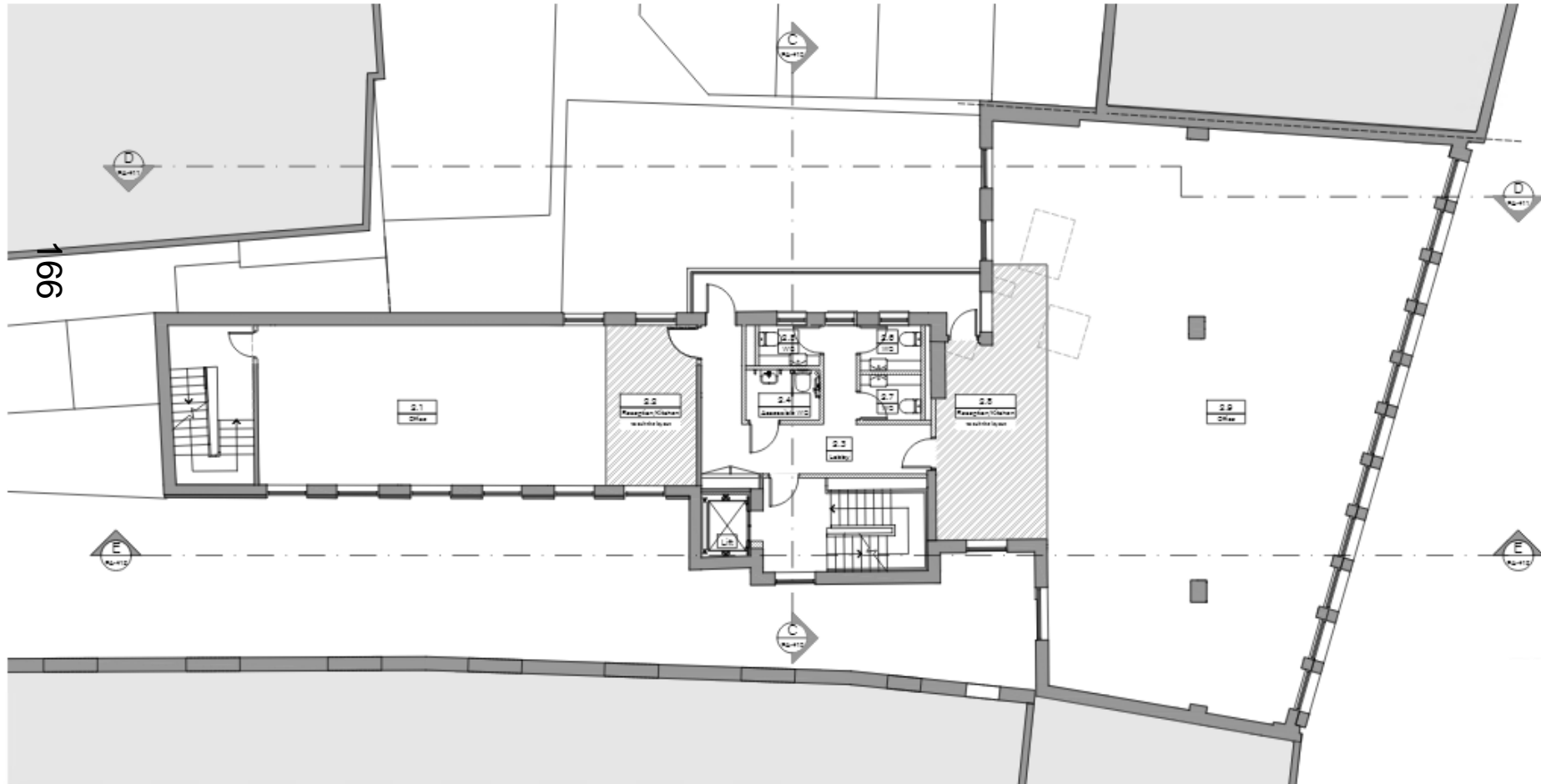
Proposed Ground Floor Plan



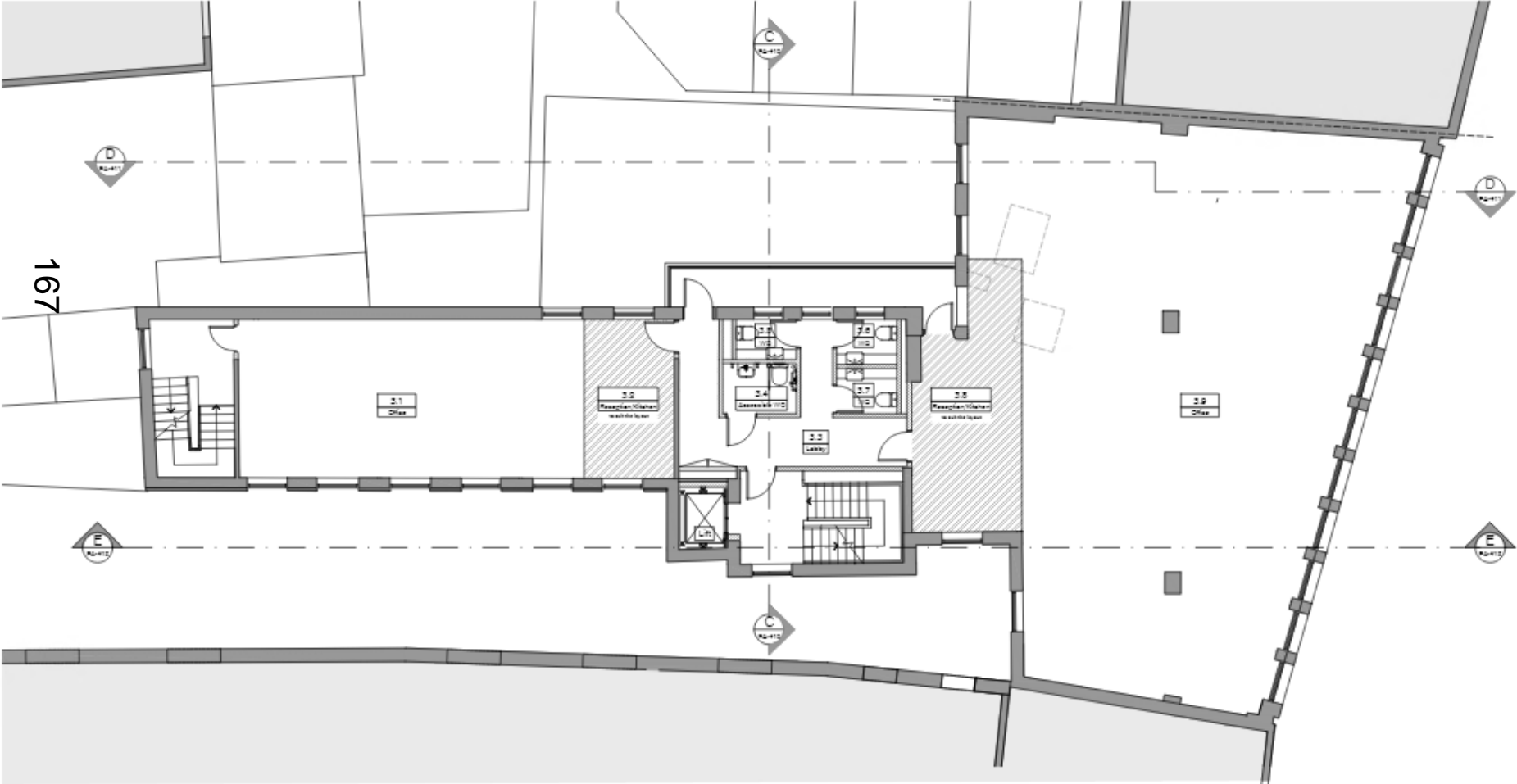
First Floor Plan



Second Floor Plan



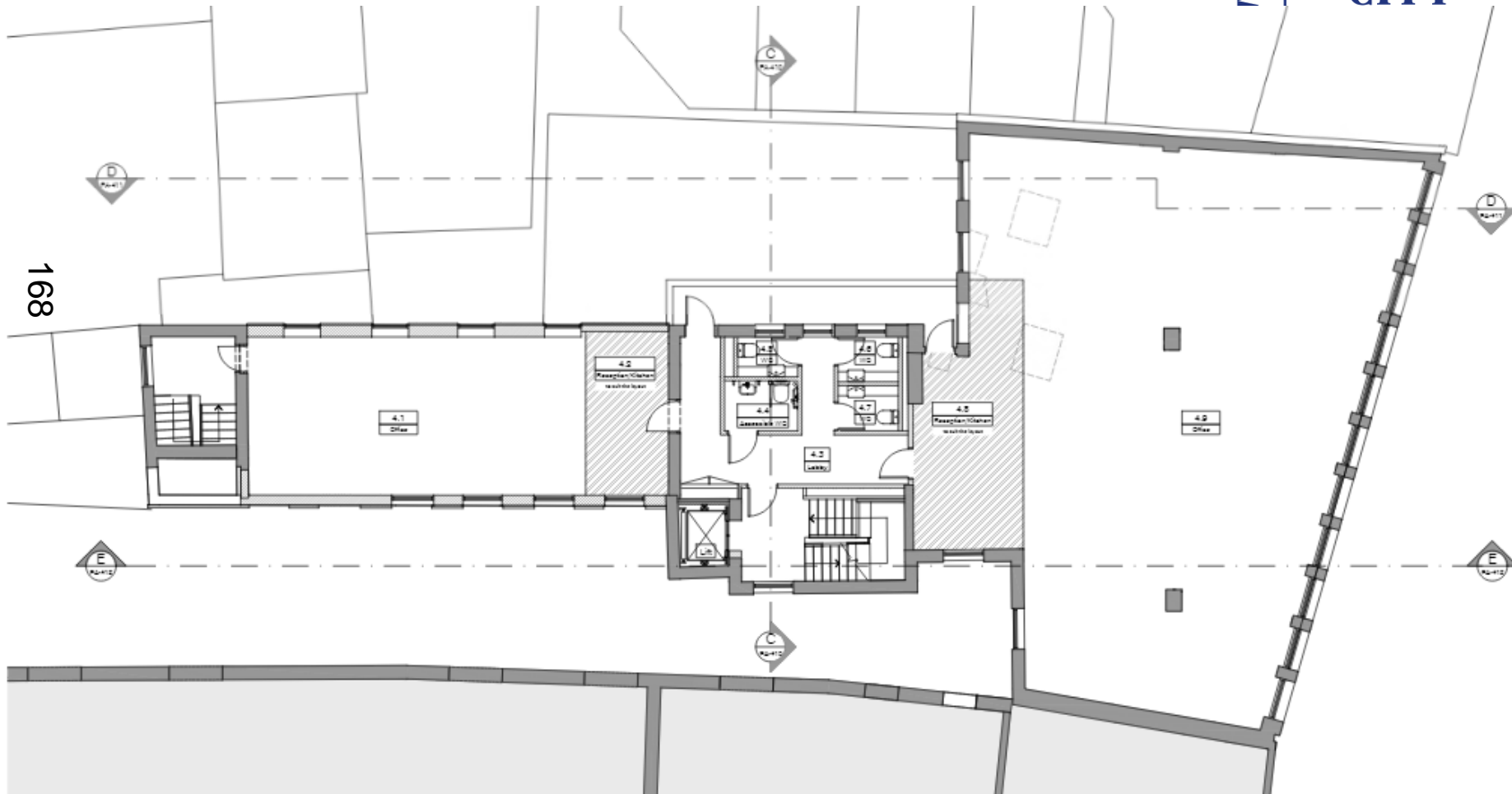
Third Floor Plan



THIRD FLOOR PLAN

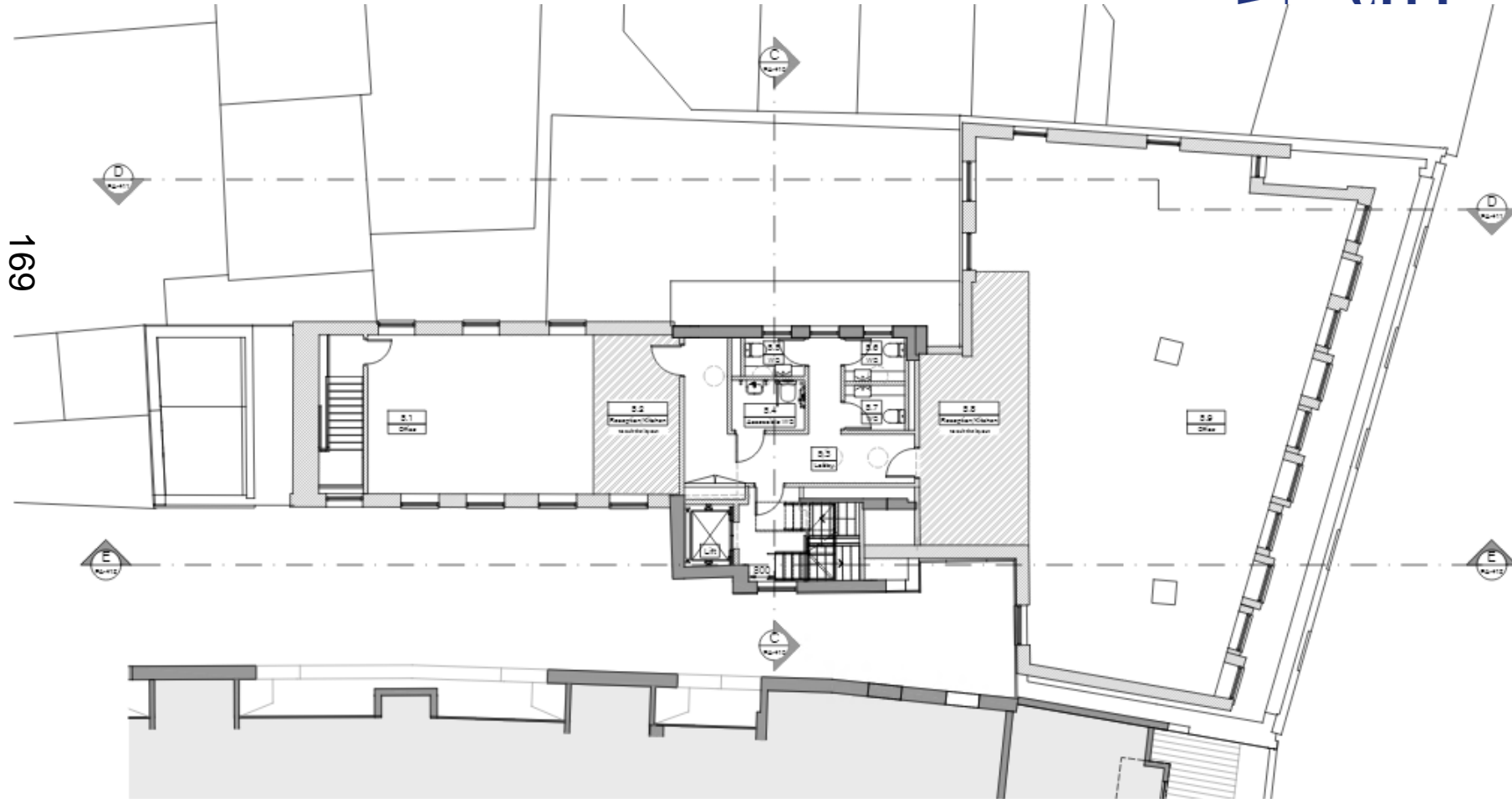
1:100

Fourth Floor Plan

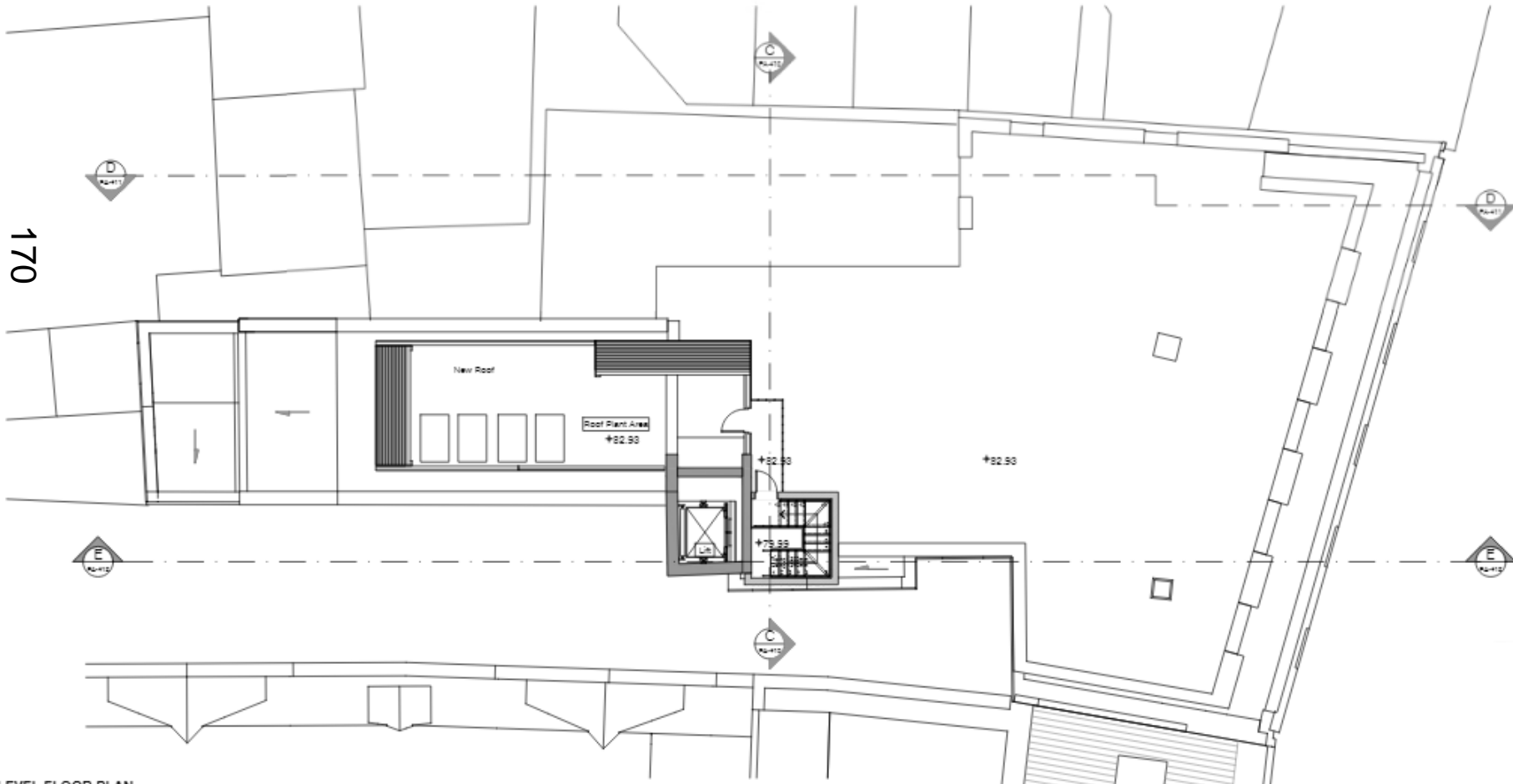


Fifth Floor Plan

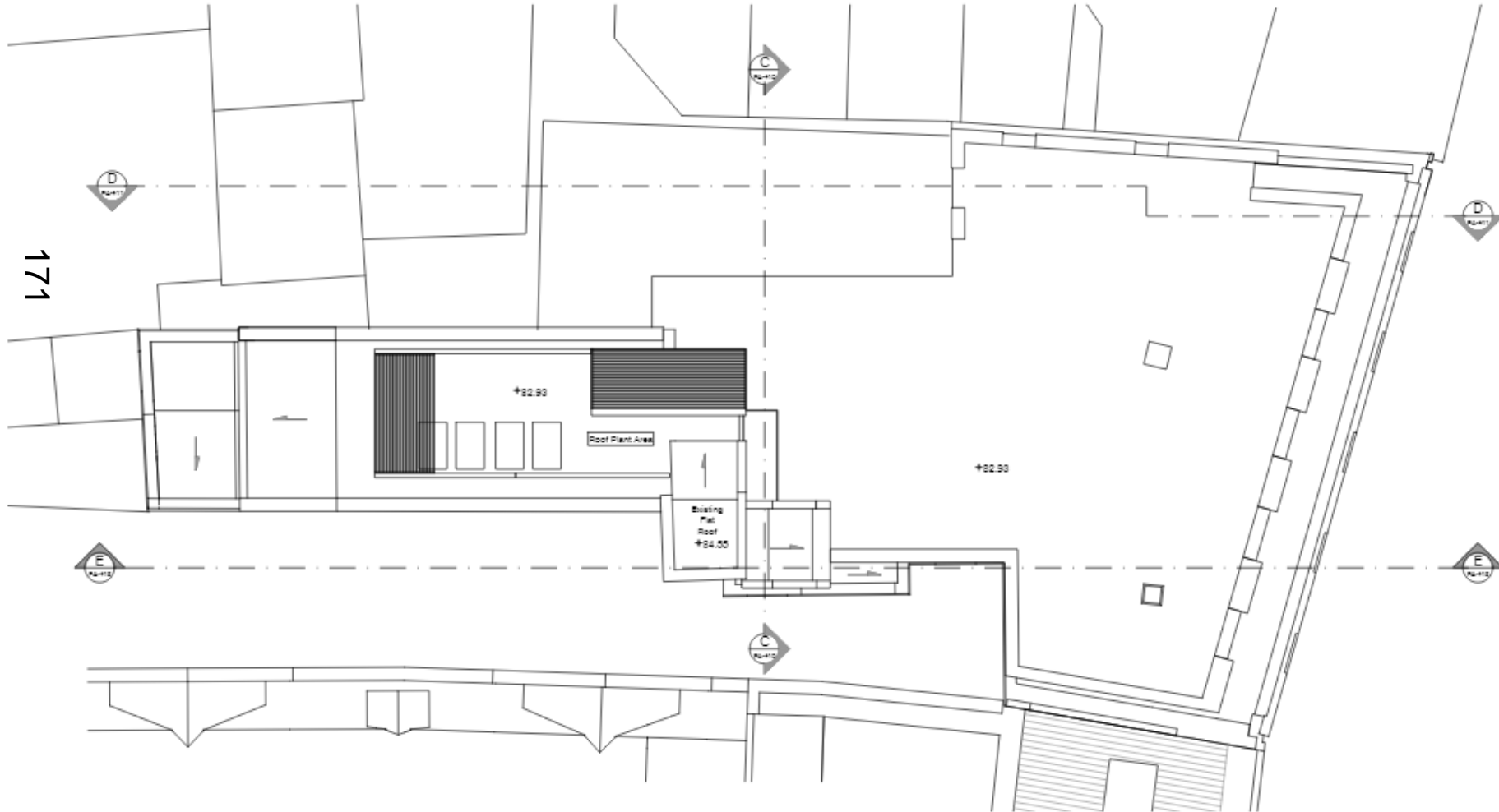
w.oxford.gov.uk



Roof Level Plan



Roof Plan



East Elevation

www.oxford.gov.uk

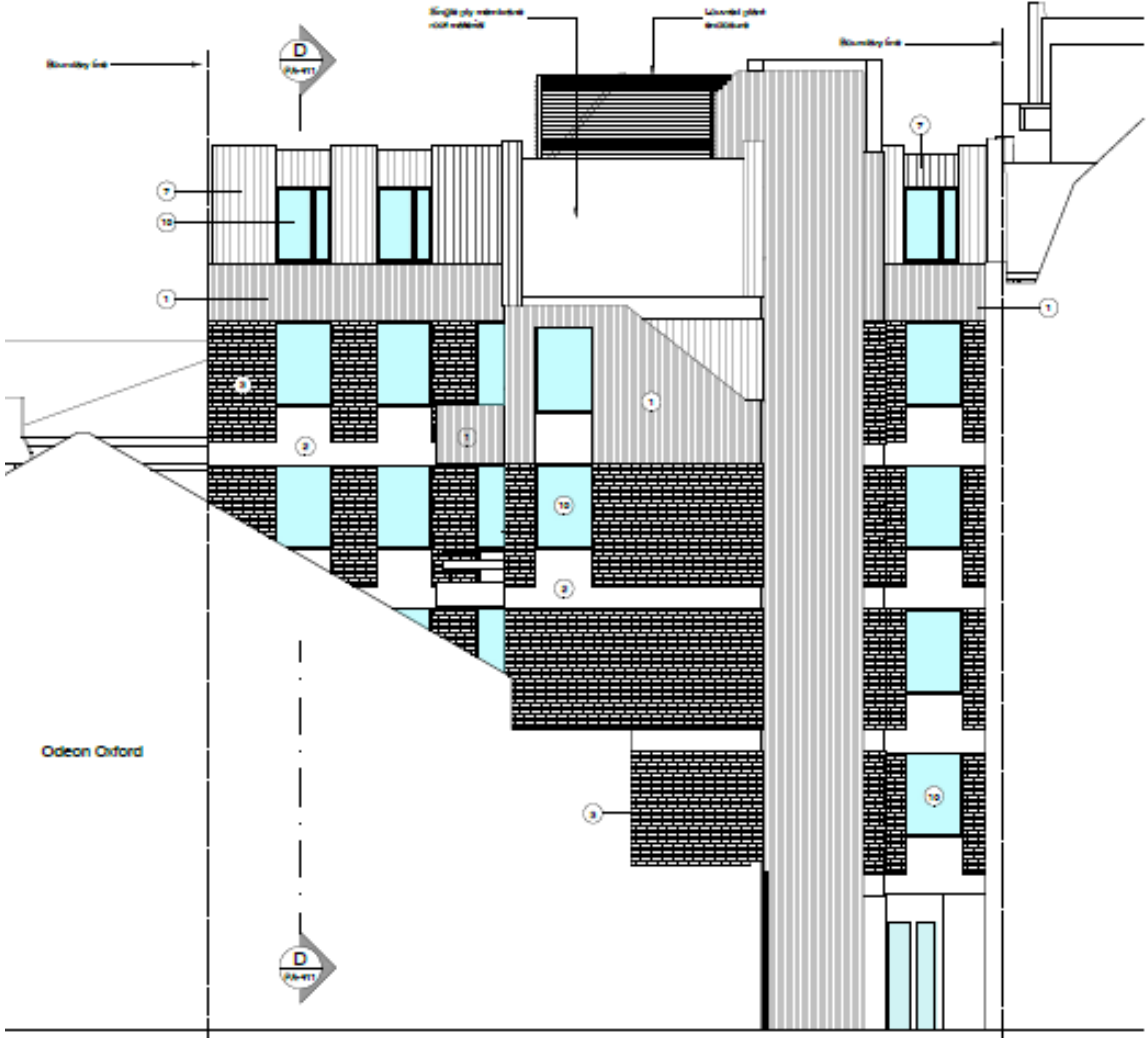


EAST ELEVATION - MAGDALEN ST
1:100



West Elevation

173

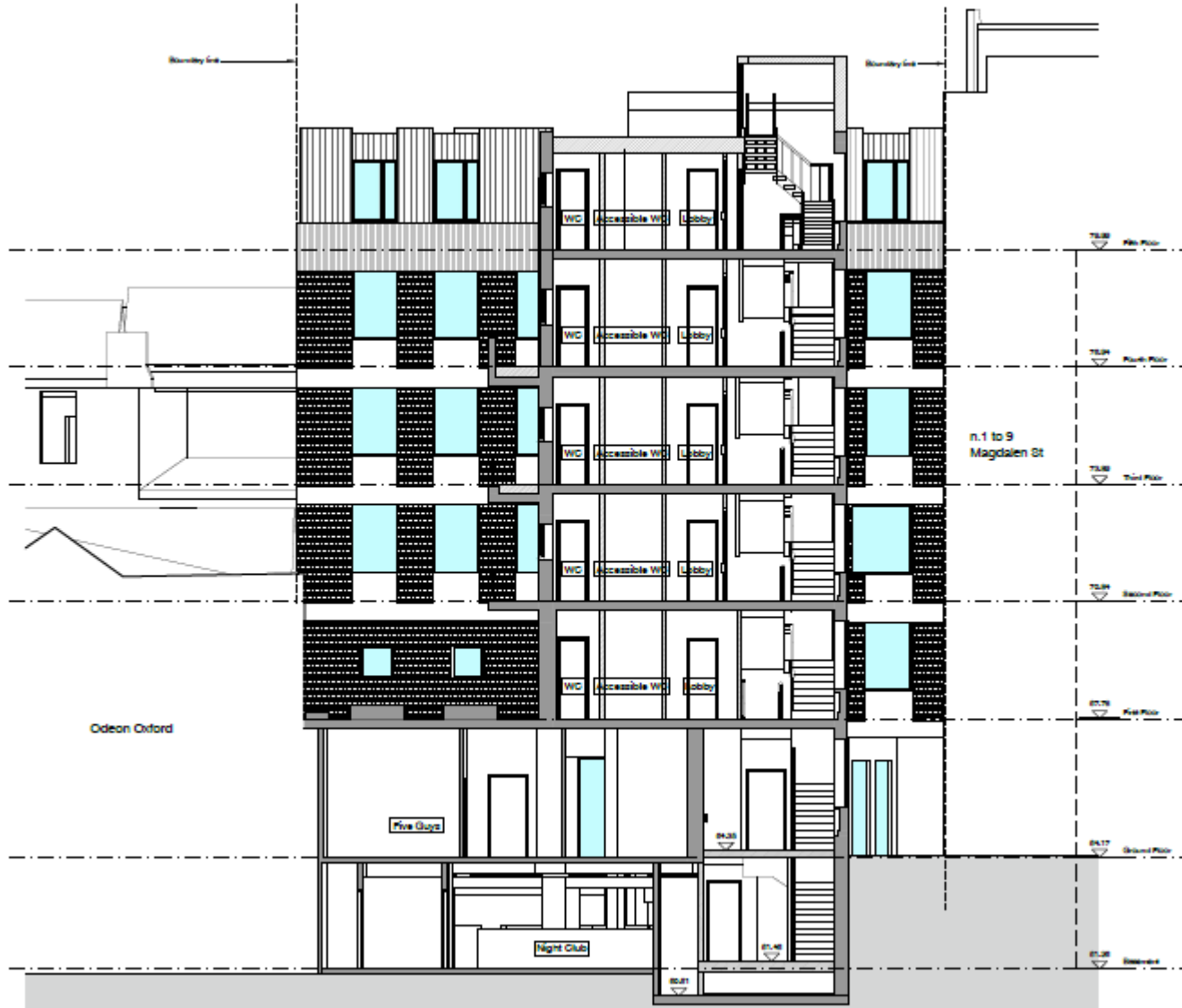


www.oxford.gov.uk



West Elevation – Section C

174

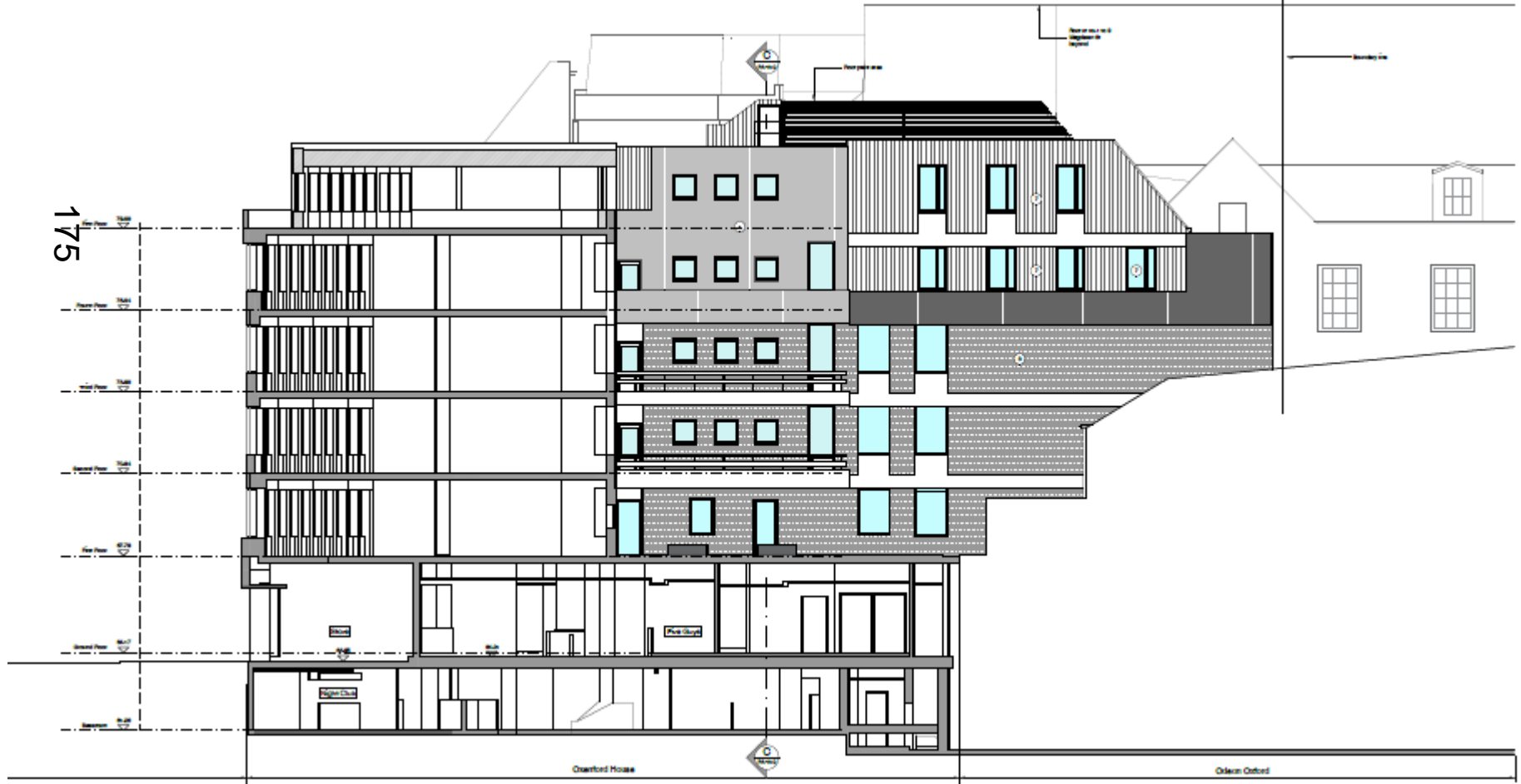


SECTION C
1:100



North Elevation / Section D

www.oxford.gov.uk



South Elevation

176



SOUTH ELEVATION - FRIAR'S ENTRY

1/100

South Elevation - Section

www.oxford.gov.uk



177



Visualisations



178



Visualisations – Friars Entry



www.oxford.gov.uk



**OXFORD
CITY
COUNCIL**



Visualisations – View from St Michaels at the Northgate

oxford.gov.uk



Visualisations – View from St Mary the Virgin



181





www.oxford.gov.uk





This page is intentionally left blank