

# Oxford City Planning Committee Presentation

[www.oxford.gov.uk](http://www.oxford.gov.uk)



**23/02166/FUL**

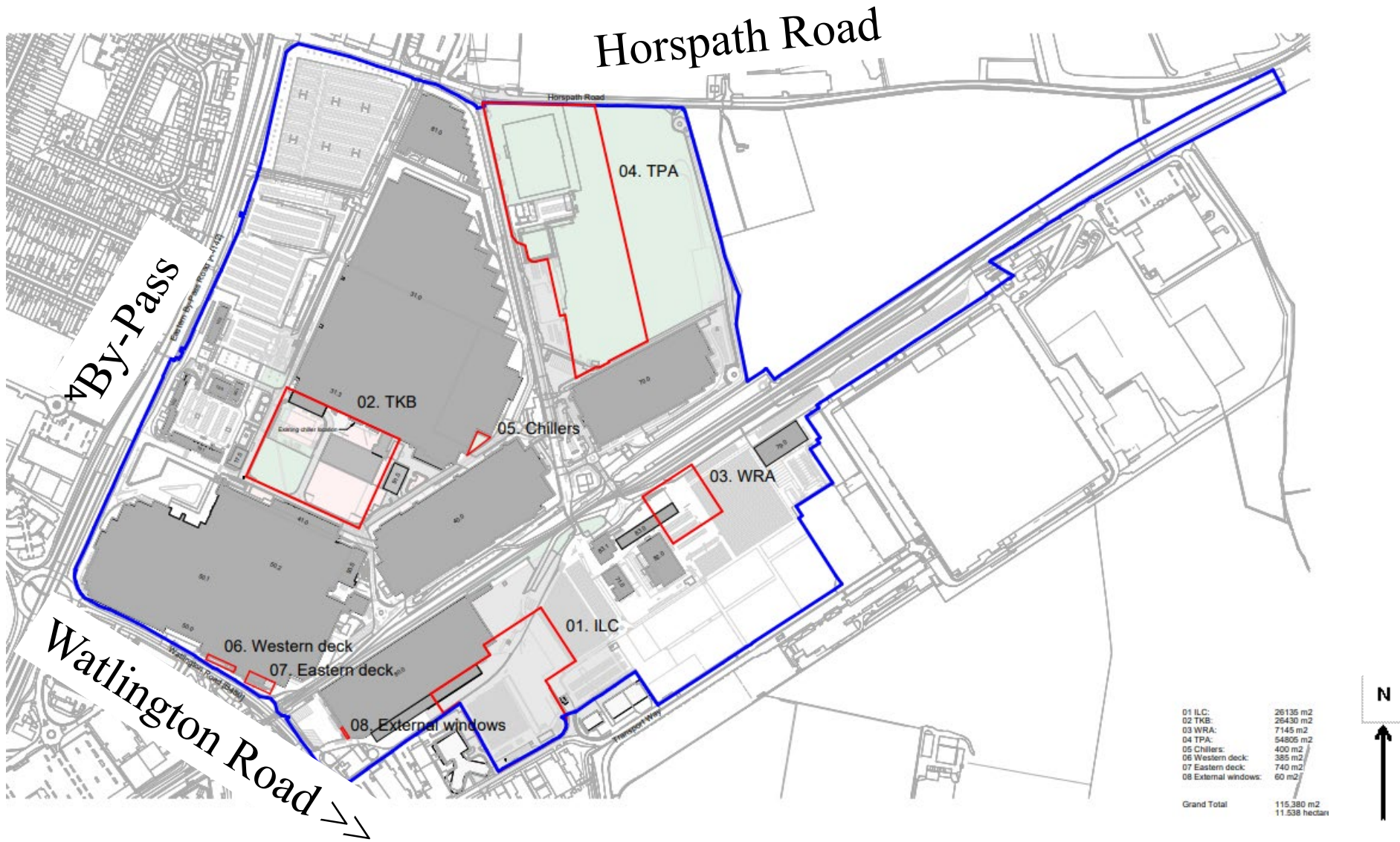
3

**BMW**

**12<sup>th</sup> December 2023**



# Site Location



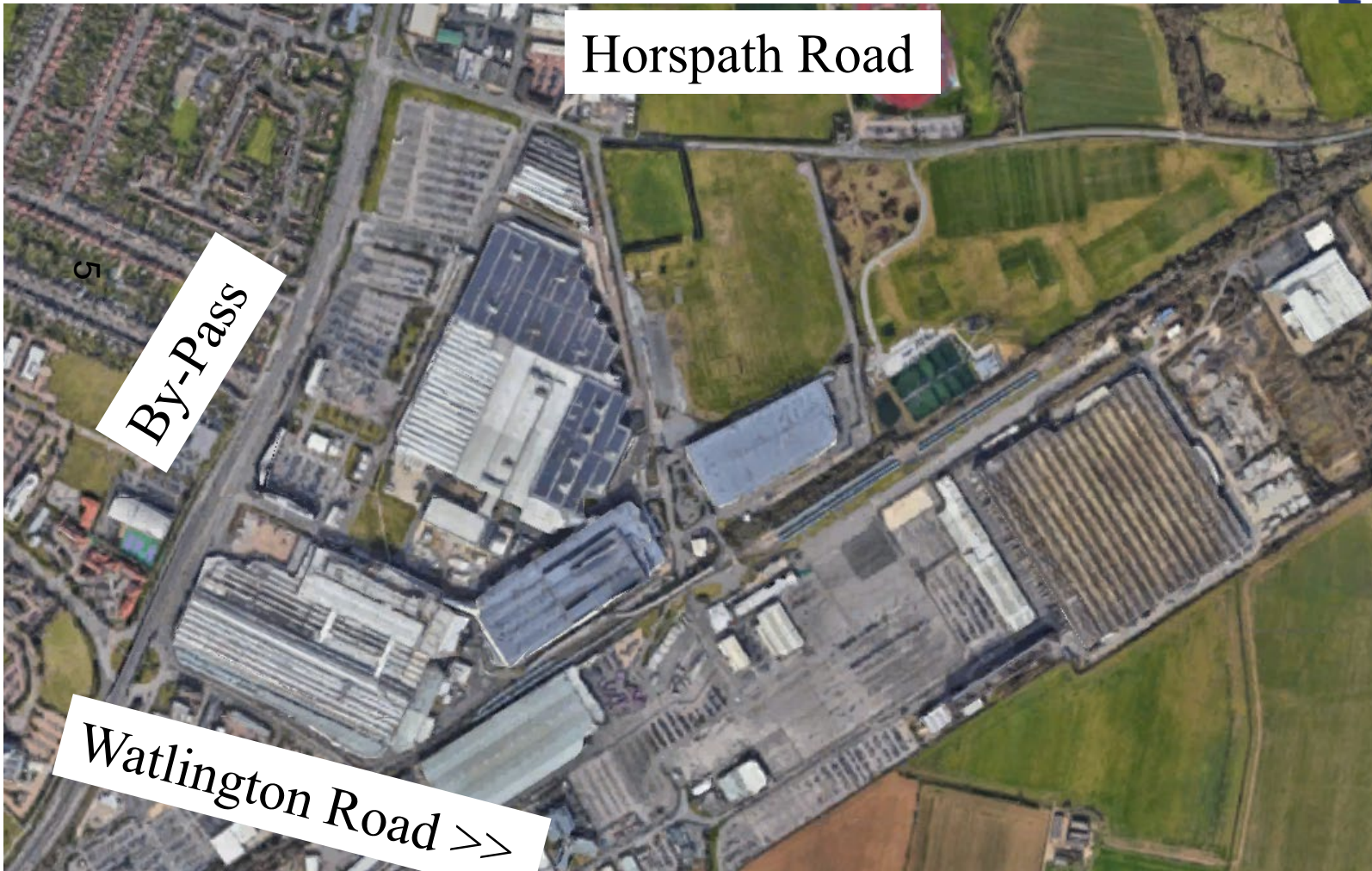
01 ILC:	26135 m2
02 TKB:	26430 m2
03 WRA:	7145 m2
04 TPA:	54305 m2
05 Chillers:	400 m2
06 Western deck:	385 m2
07 Eastern deck:	740 m2
08 External windows:	60 m2
<b>Grand Total</b>	<b>115,380 m2</b> <b>11.538 hectan</b>





# Existing Site – Google Aerial View

oxford.gov.uk





# Existing Site View from Horsepath Road/Oxford Road



9

[www.oxford.gov.uk](http://www.oxford.gov.uk)



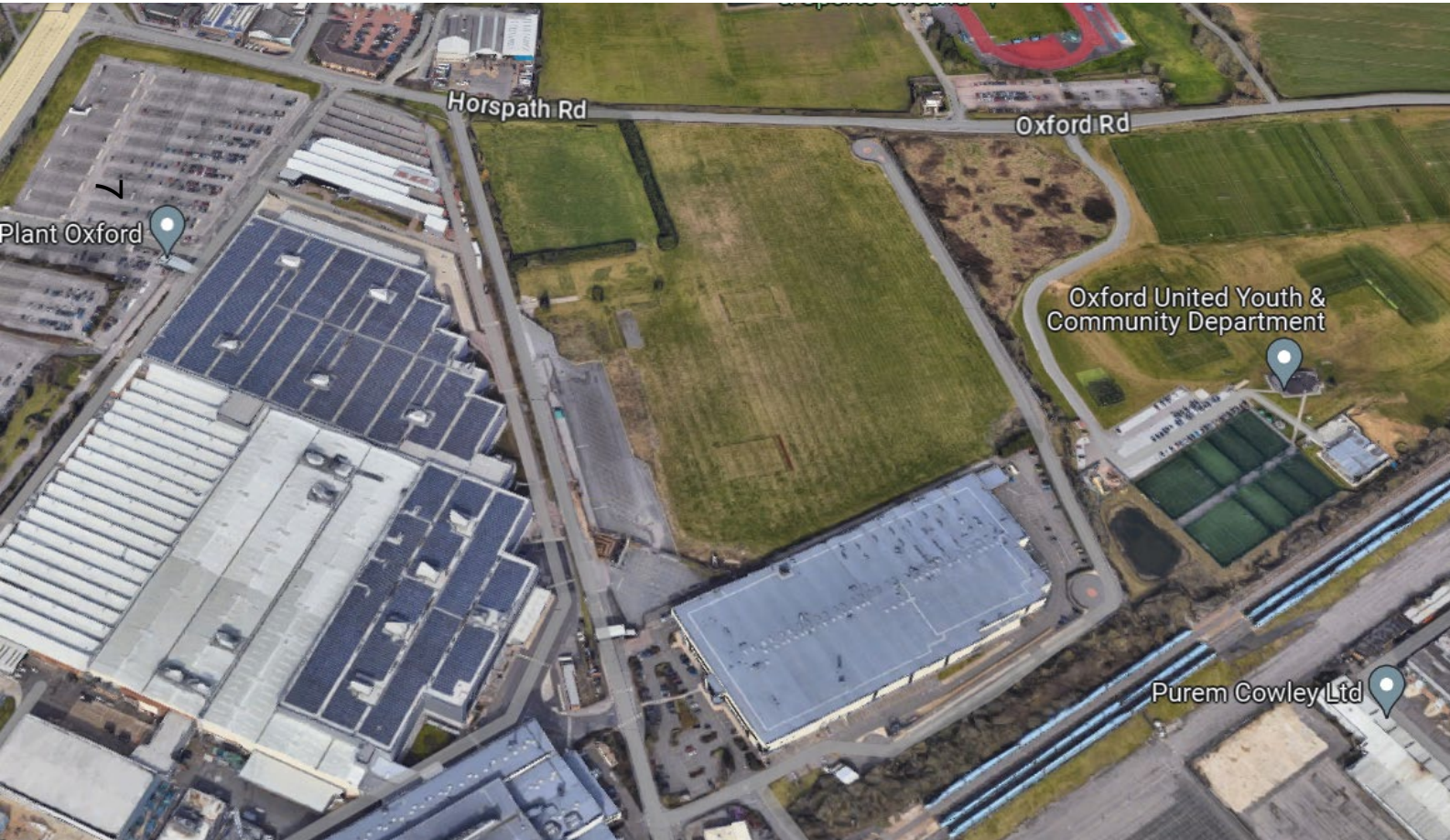
**OXFORD  
CITY  
COUNCIL**





# Existing Google Aerial View of Lorry parking site (TPA)

www.oxford.gov.uk





# Existing Site – Roman Way, looking south

8



[www.oxford.gov.uk](http://www.oxford.gov.uk)



**OXFORD  
CITY  
COUNCIL**





# Existing Site – Staff parking, seen from Horsepath Road



[www.oxford.gov.uk](http://www.oxford.gov.uk)





# Existing Site – View from Ring Road – towards TKB area



[www.oxford.gov.uk](http://www.oxford.gov.uk)



**OXFORD  
CITY  
COUNCIL**





# Existing Site – View of TKB area



[www.oxford.gov.uk](http://www.oxford.gov.uk)



**OXFORD  
CITY  
COUNCIL**



# Existing Site – View from Transport Way towards ILC



12

[www.oxford.gov.uk](http://www.oxford.gov.uk)



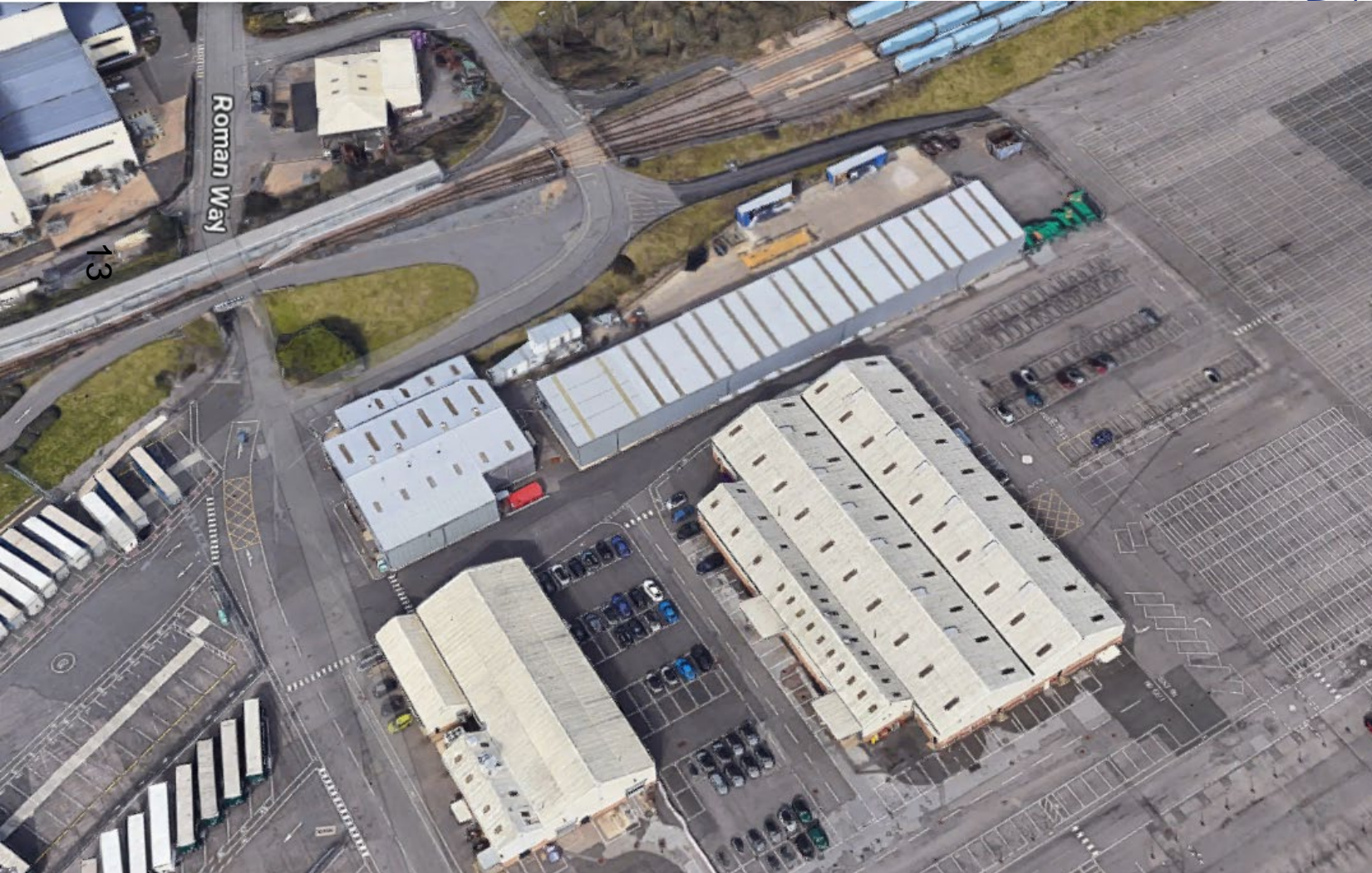
**OXFORD  
CITY  
COUNCIL**



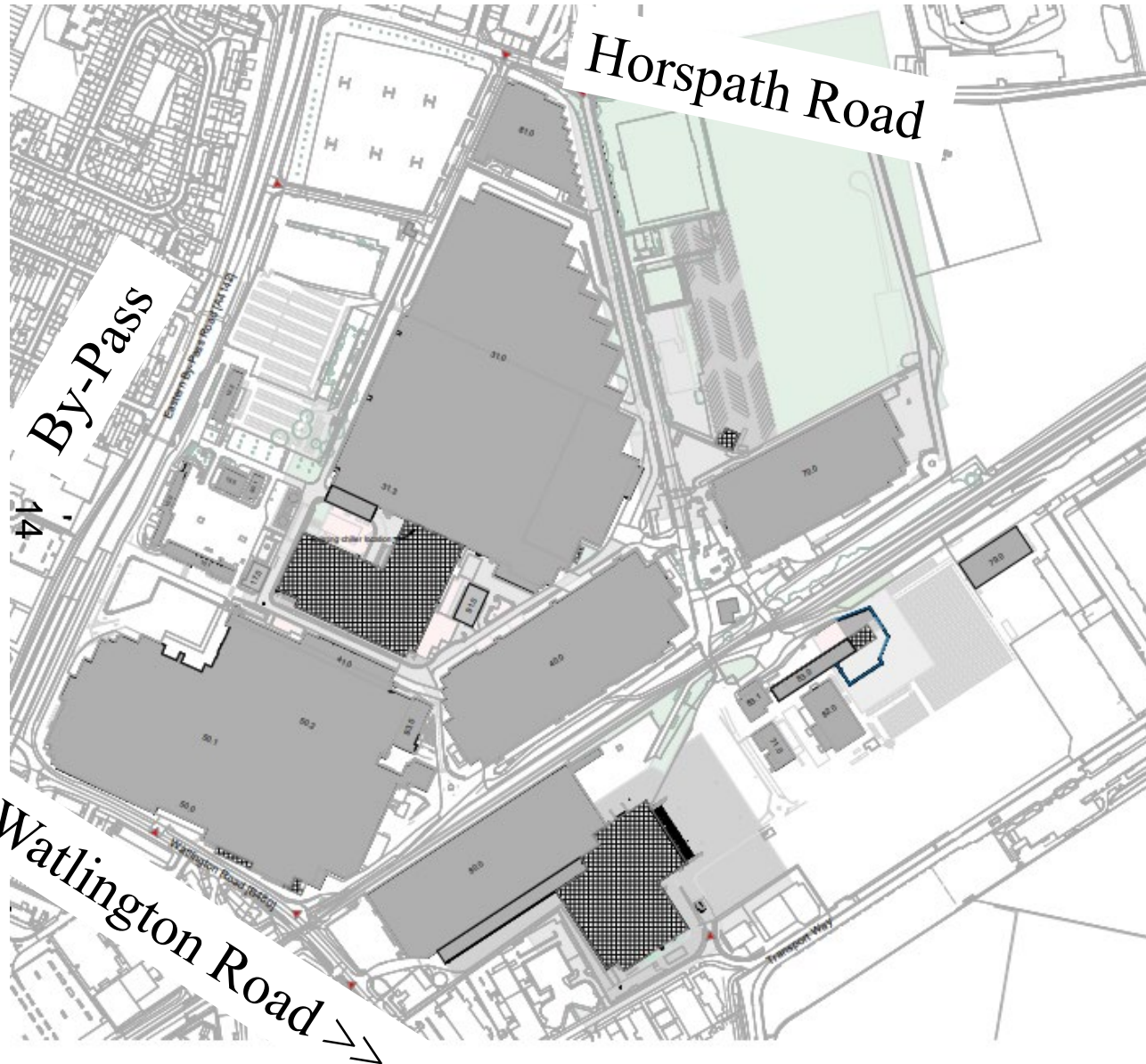


# Existing Site – View of Waste Area in centre of site

v.oxford.gov.uk



# Proposed Block Plan



[www.oxford.gov.uk](http://www.oxford.gov.uk)





# Proposed Schematic View

Watlington Road

By-Pass



# Proposal ILC Extension



16

Eastern view of the site showing the proposed footprint of the Integrated Logistics Centre.



[www.oxford.gov.uk](http://www.oxford.gov.uk)





# Proposal TBK/TLO Extension

17



Northerly view of the site showing the proposed footprint of the TBK and TLO building.





# Proposal WRA Extension



18

Northerly view of the site showing the proposed footprint of the WRA



[www.oxford.gov.uk](http://www.oxford.gov.uk)

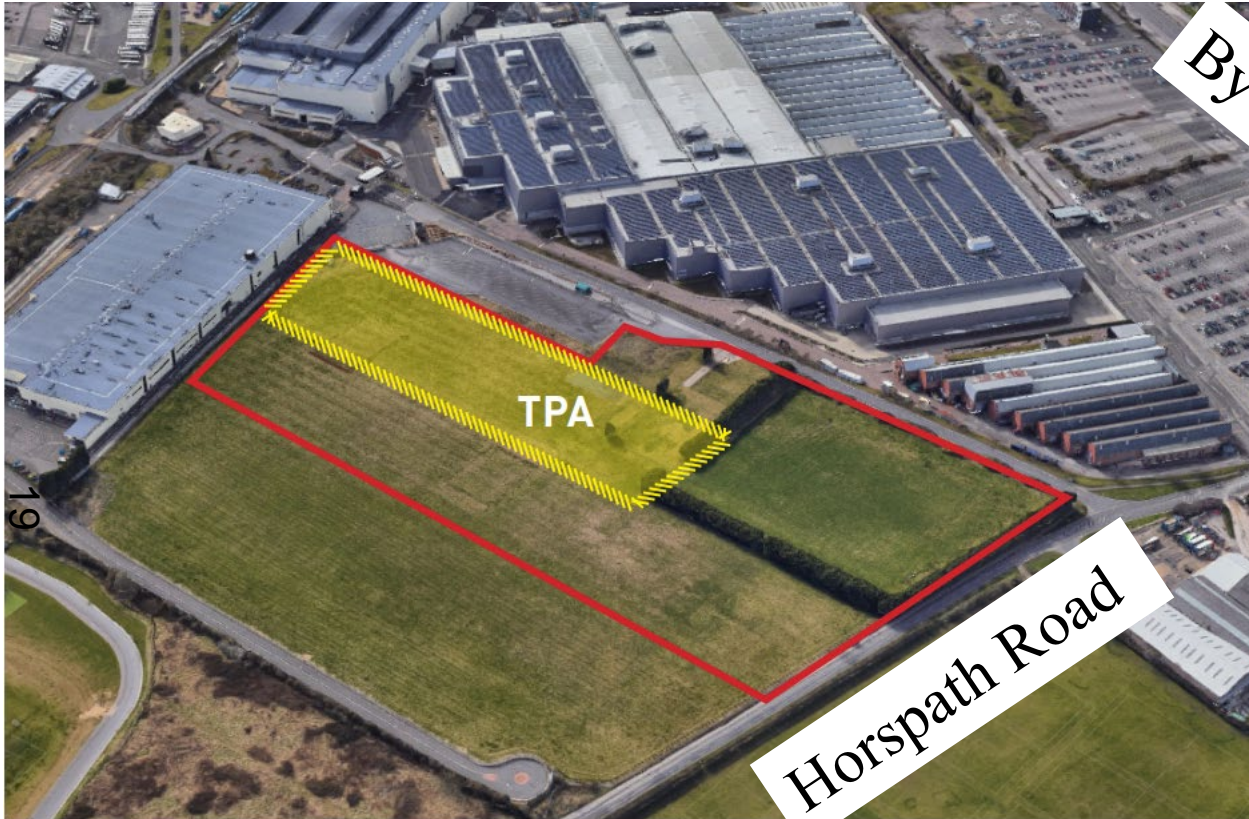


**OXFORD  
CITY  
COUNCIL**





# Proposal TPA Area



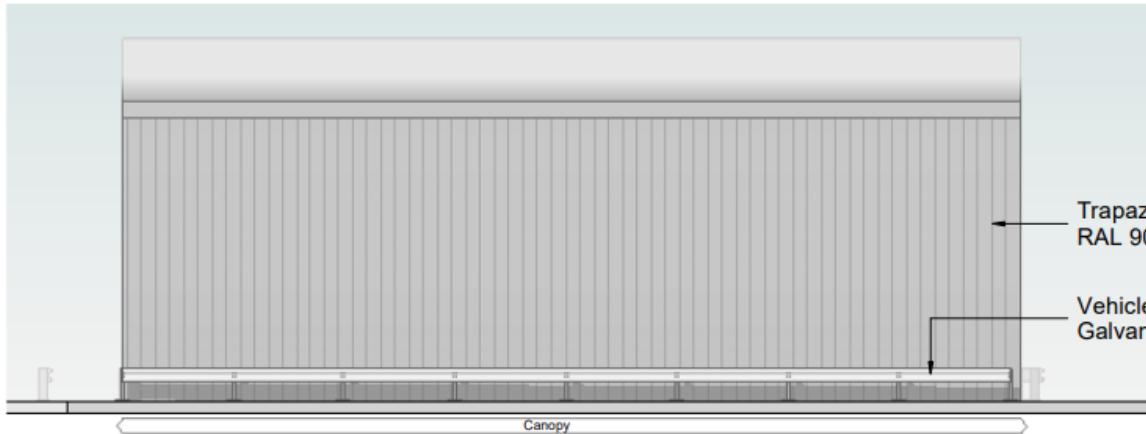
Northerly view of the proposed Trailer Park, depicting the extent of the new parking area



[www.oxford.gov.uk](http://www.oxford.gov.uk)



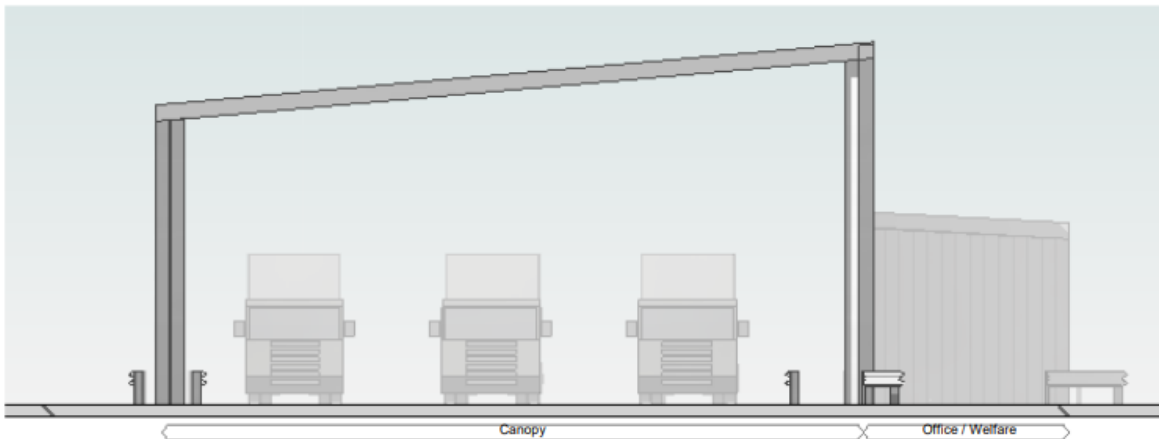
# Proposed Schematic View TPA



20

**Inspection Canopy - North East Elevation**

1 : 100



**Inspection Canopy - North West Elevation**

1 : 100



# Proposed Appearance Details



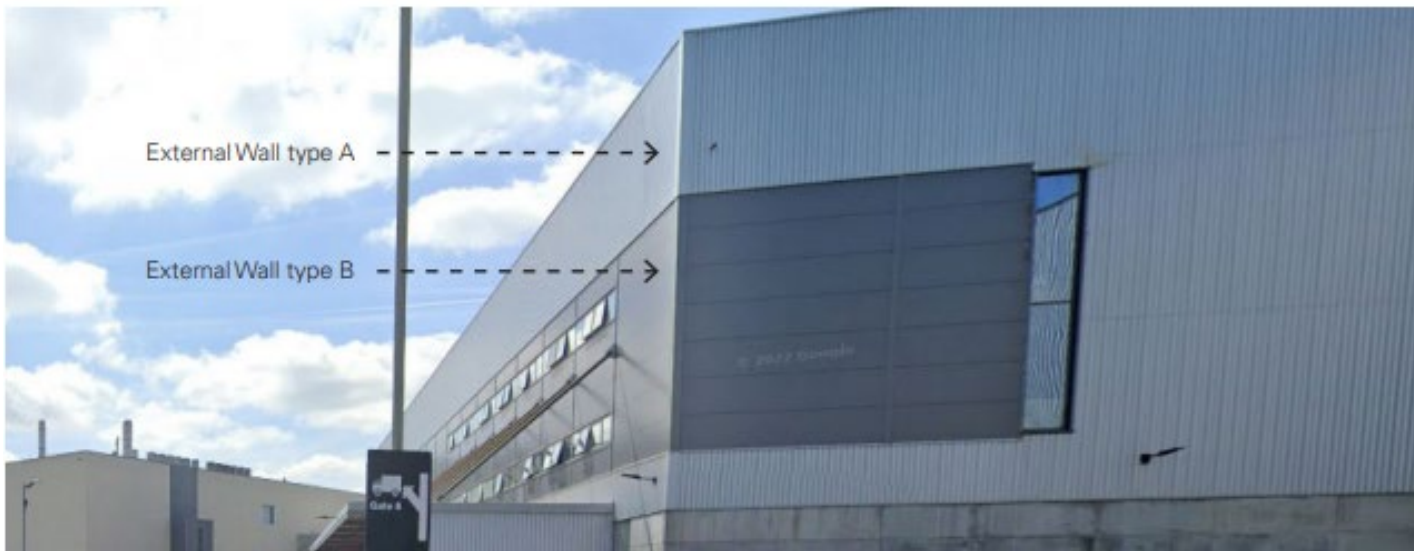
External wall-Type A

Vertical trapezoidal metal profile, colour RAL9006. Insulation to be non-combustable mineral wool type to meet energy performance requirements.



External wall-Type B

Flat sheet metal profile, colour RAL9006. Insulation to be non-combustable mineral wool type to meet energy performance requirements.



# Proposed Appearance Details ILC South West Corner



22

[www.oxford.gov.uk](http://www.oxford.gov.uk)





# Proposed Views from Horspath Village

23

*Location of  
proposed intergrated logistics centre*



*Location of  
proposed trailer parking area*



*Location of  
proposed body shop extension and  
logistics*



# Proposed View from Temple Cowley Conservation Area

www.oxford.gov.uk



Viewpoint 7: Temple Cowley Conservation Area (A) View looking east from Garsington Road.



# Proposed View from St Marys Church Tower



# Proposed View from Carfax Tower

www.oxford.gov.uk



Merton College Chapel

Existing BMW Mini Plant

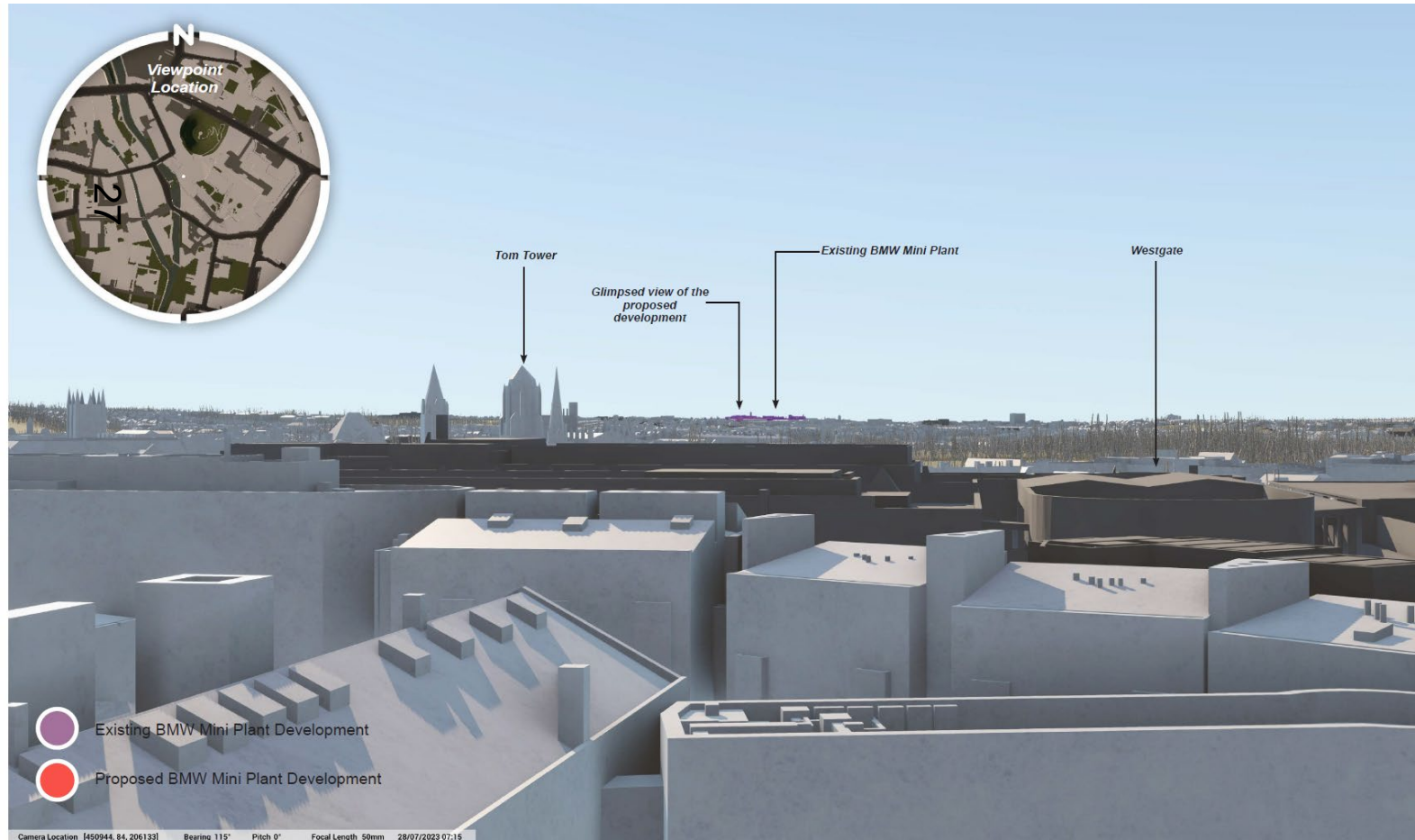
Christchurch Cathedral

-  Existing BMW Mini Plant Development
-  Proposed BMW Mini Plant Development





# Proposed View from St George's Tower



This page is intentionally left blank