

Oxford City Planning Committee Presentation

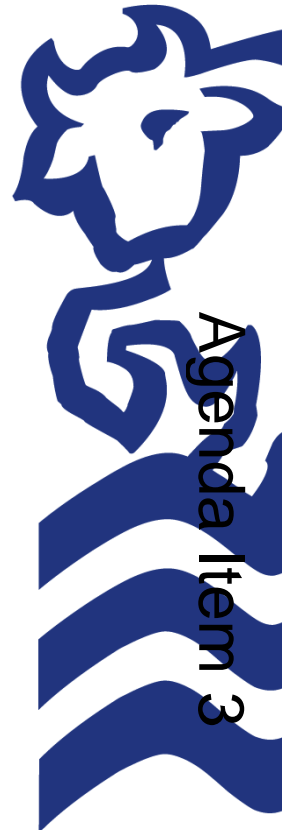
www.oxford.gov.uk



Reference Number: 23/00707/RES

3

**Site Address: Building A – Oxford
North**

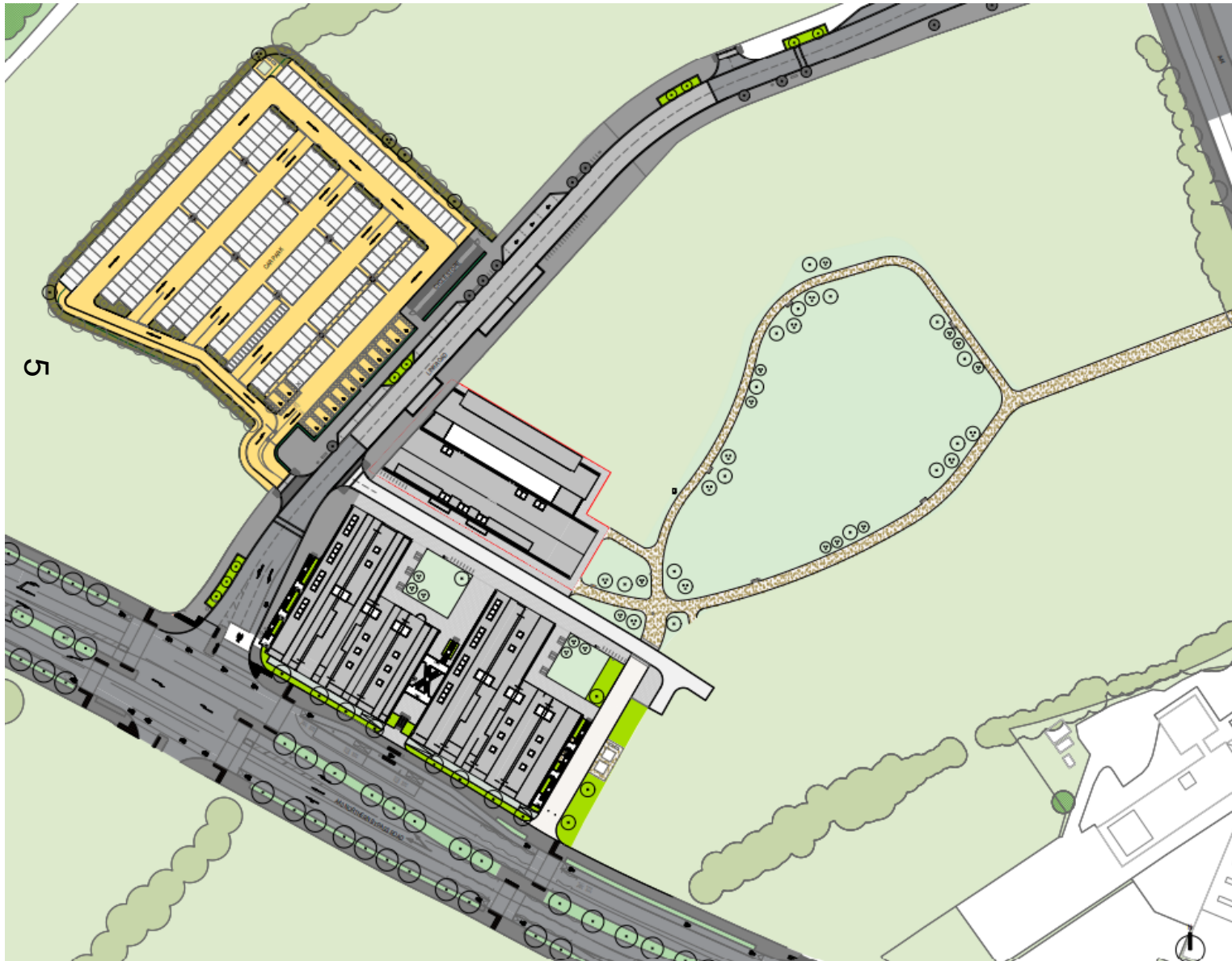


Approved Masterplan

[-gov.uk](https://www.gov.uk)



Phase 1A Consented Plans



Location on Site



Location on Site

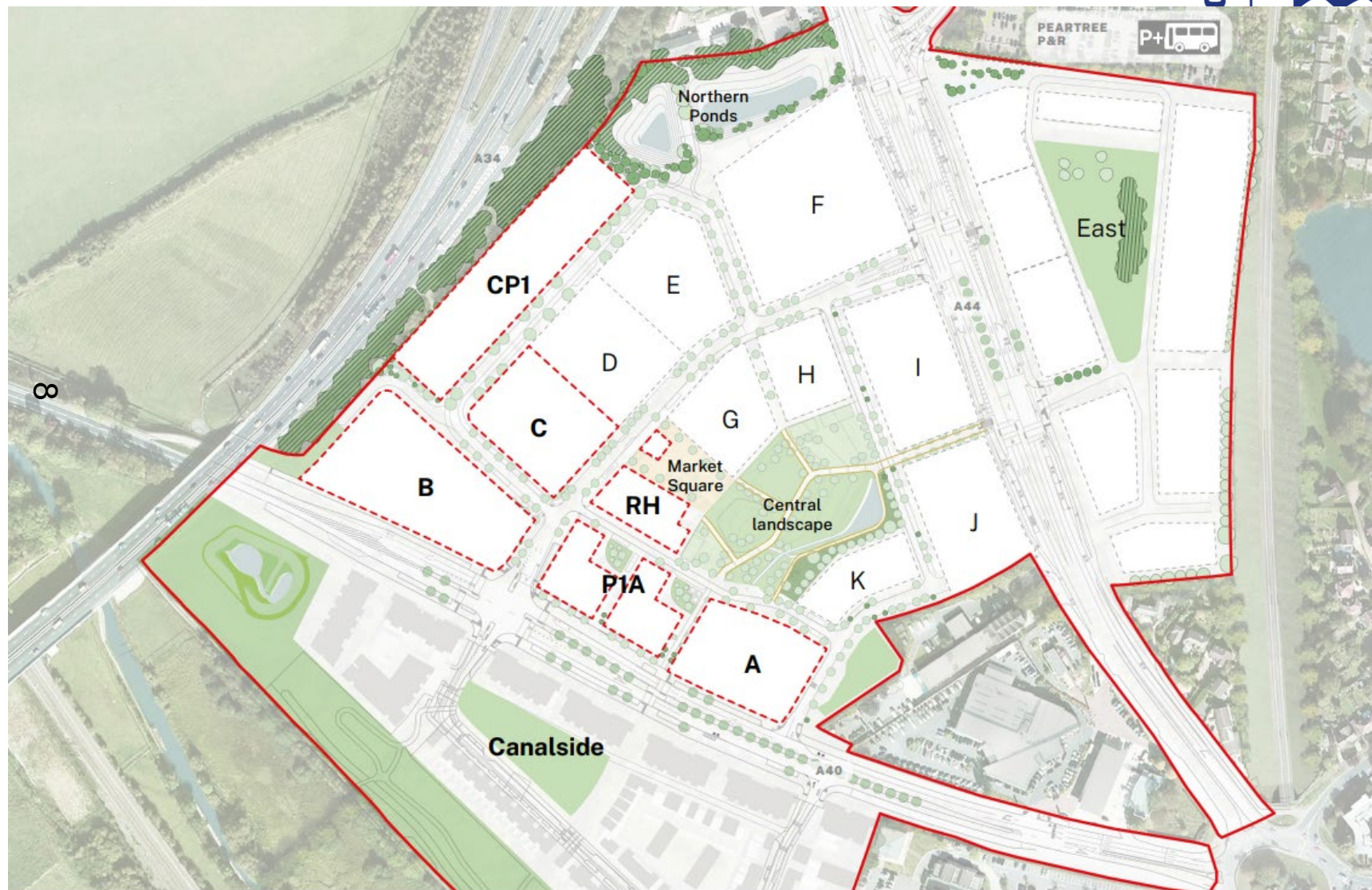


Oxford North – Phase 2 Proposals

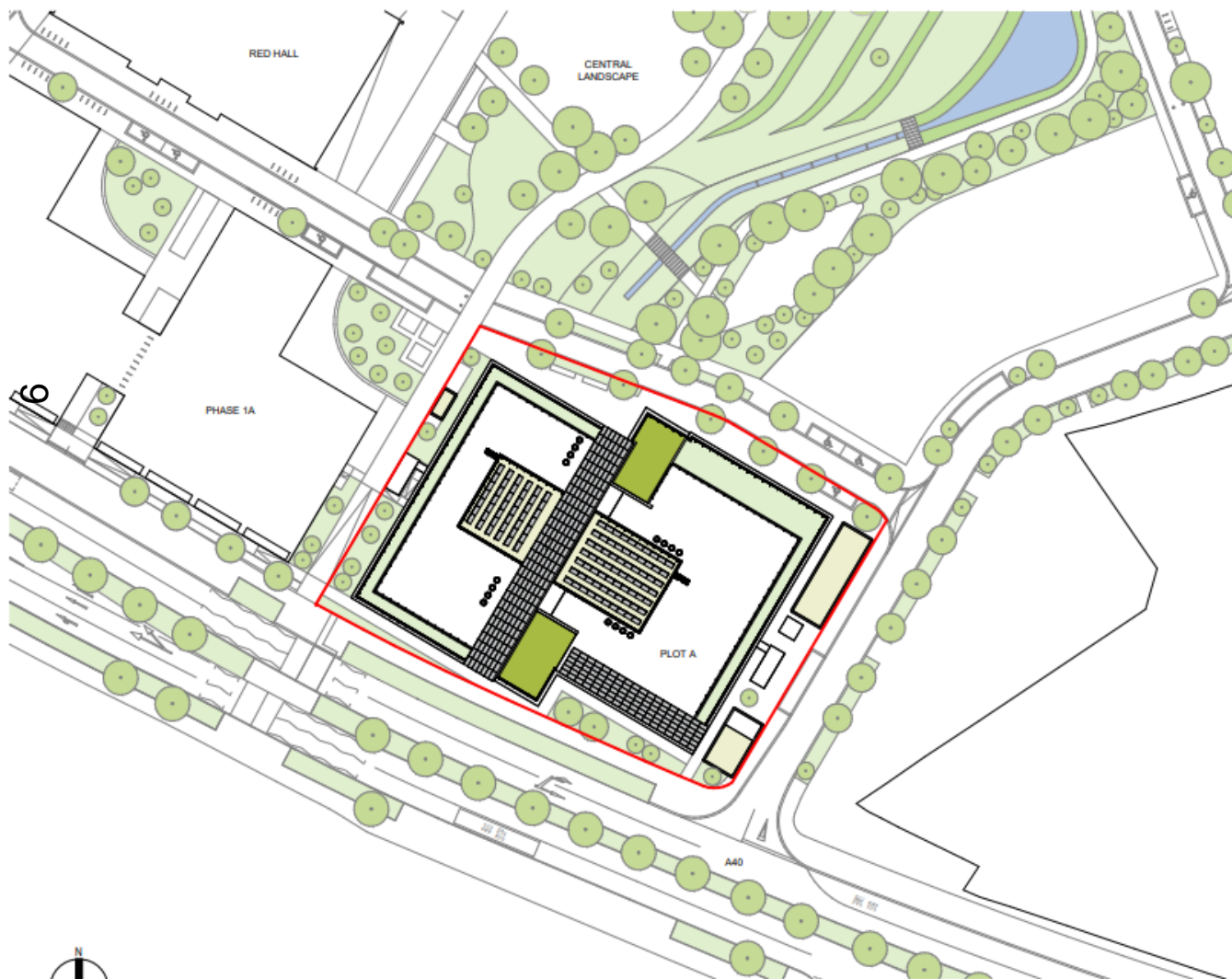
oxford.gov.uk



OXFORD
CITY
COUNCIL



Site Plan



www.oxford.gov.uk

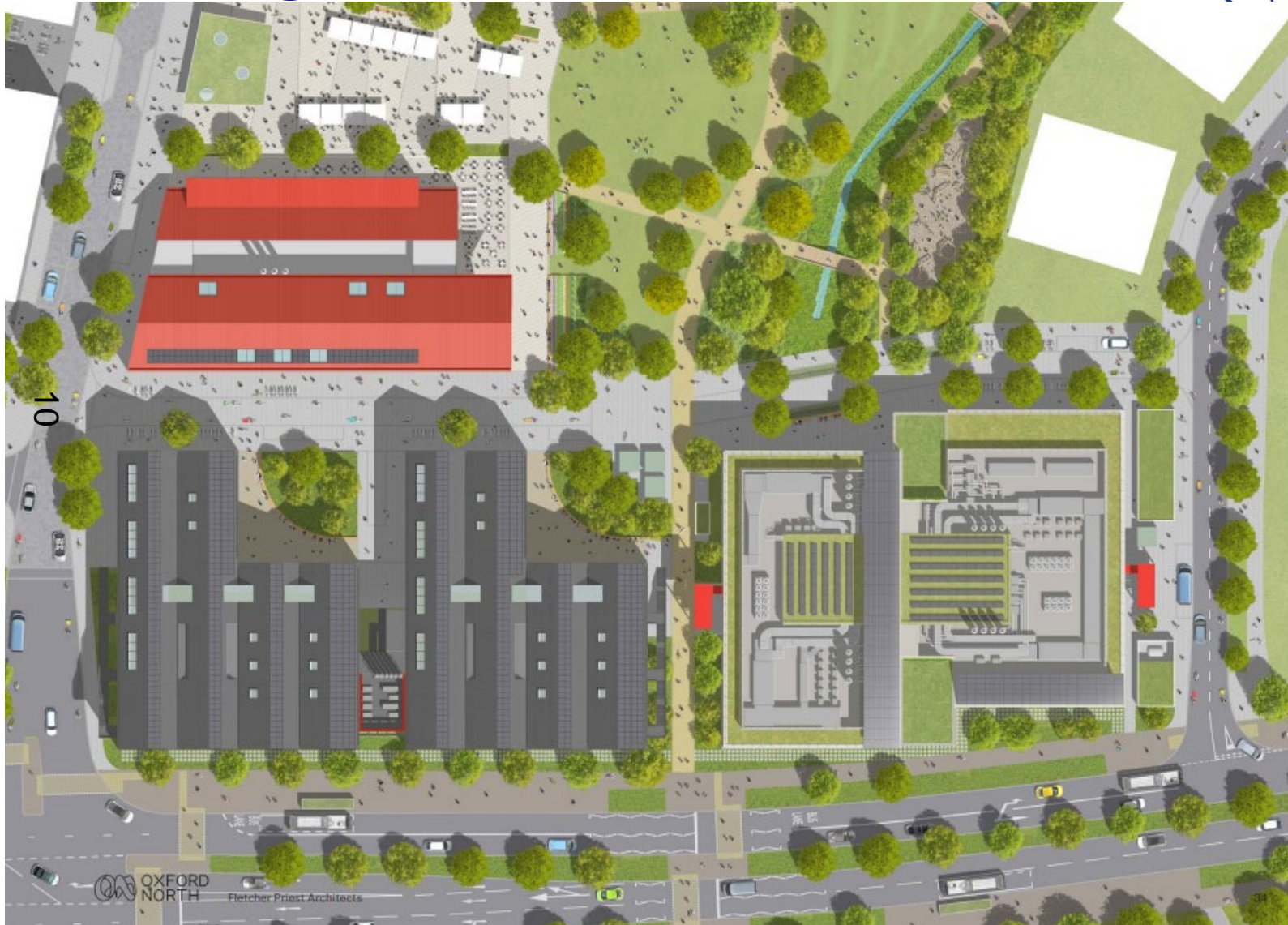


Relationship to Phase 1a Buildings

rd.gov.uk

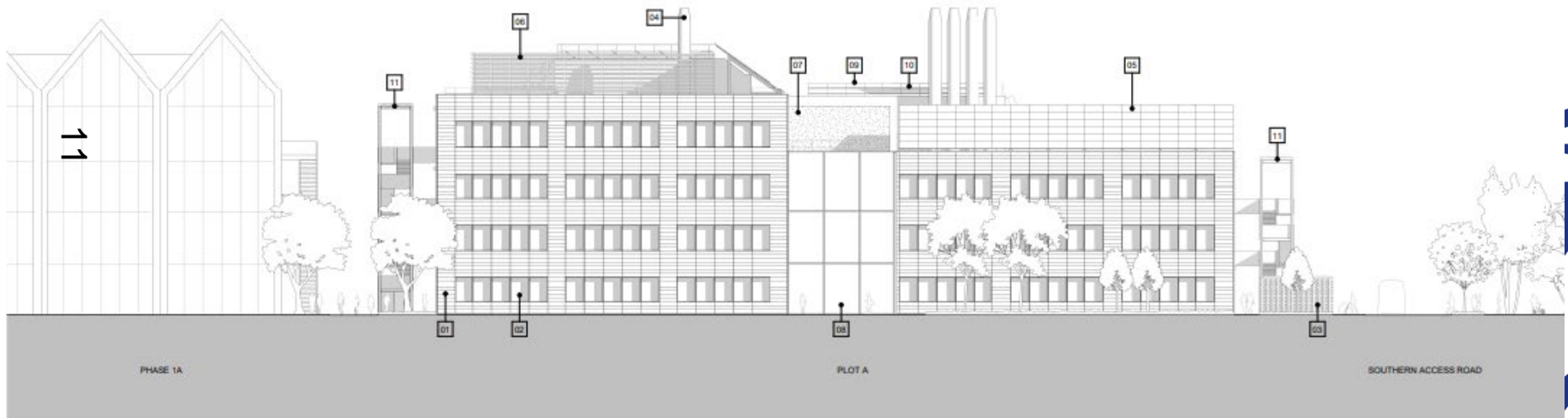


OXFORD
CITY
COUNCIL



South West Elevation (Facing A40)

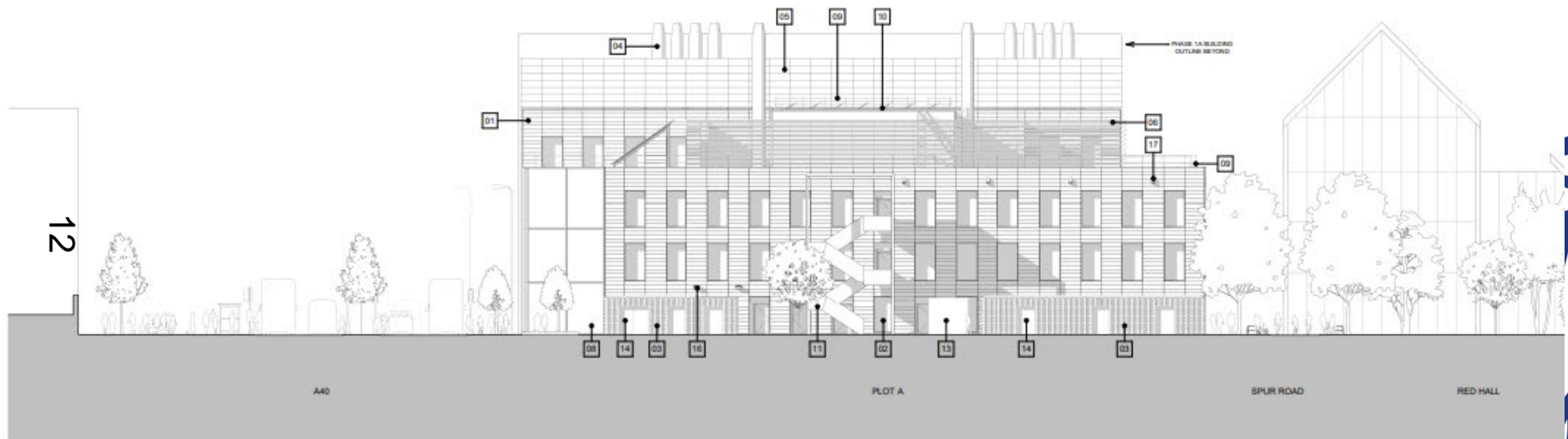
www.oxford.gov.uk



SW South West Elevation
1 : 200

South East Elevation

ford.gov.uk



SE South East Elevation
1 : 200

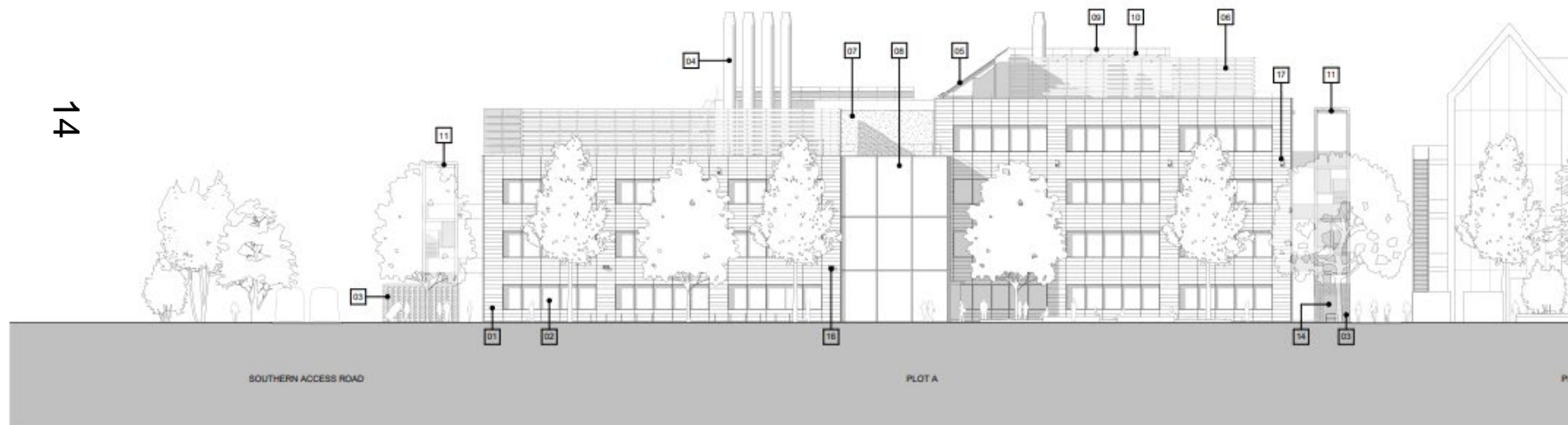
Context Visual South East Corner

oxford.gov.uk



North East Elevation

www.oxford.gov.uk



NE North East Elevation
1 : 200

**WORD
TY
NCIL**



North East and North West Elevations view from Red Hall

ord.gov.uk

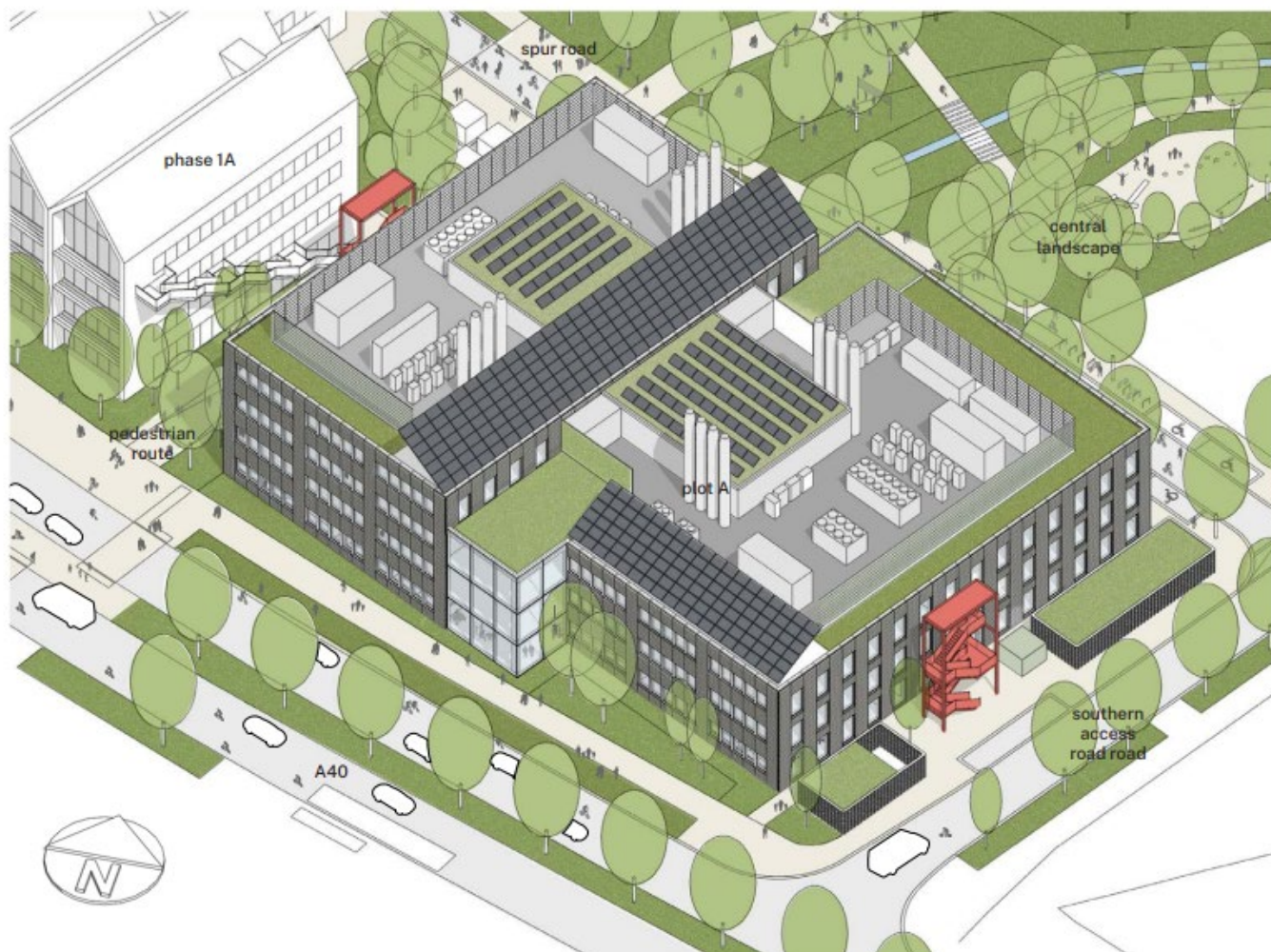


ORD
TY
NCIL

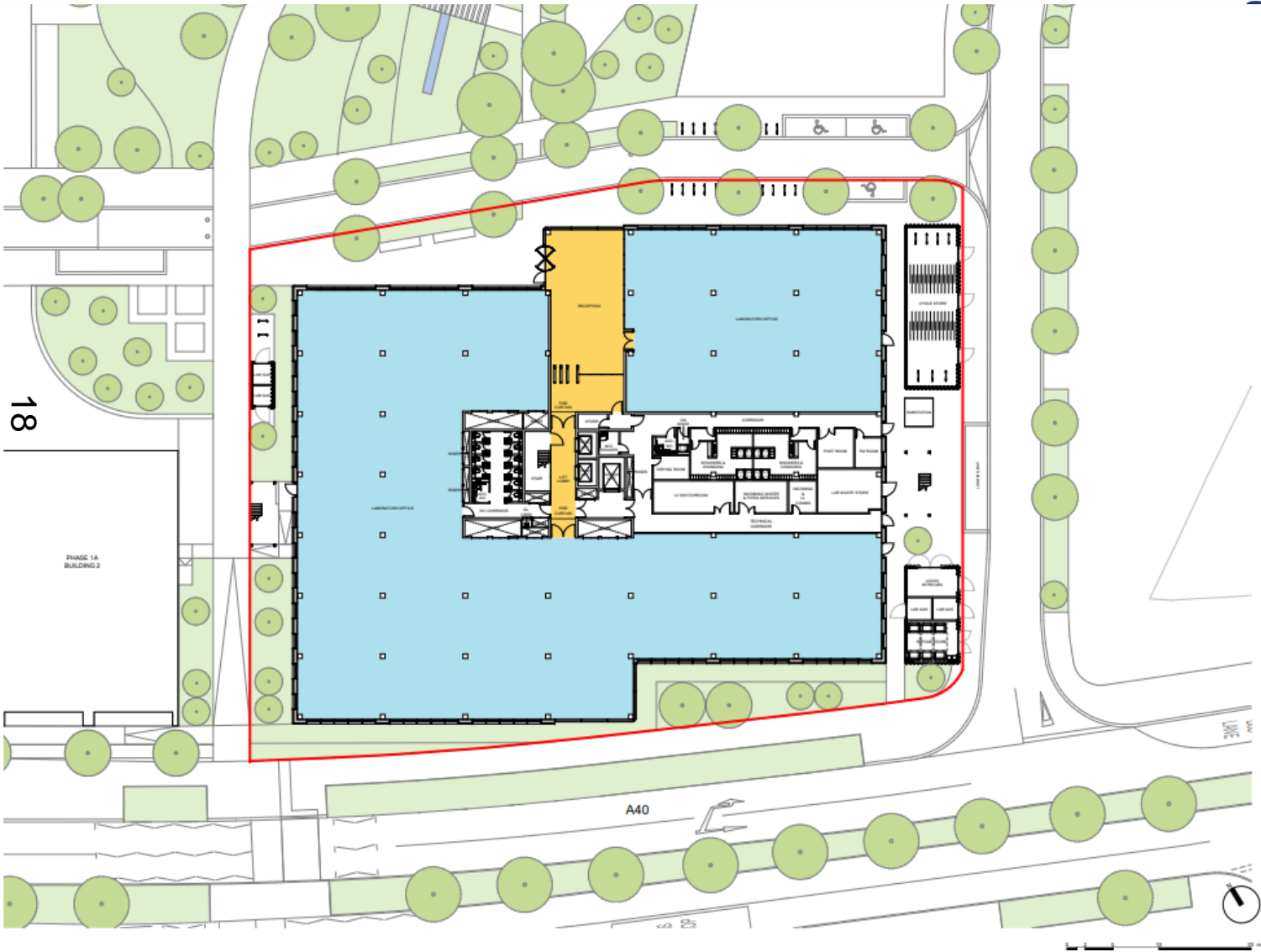


3D Visual Model

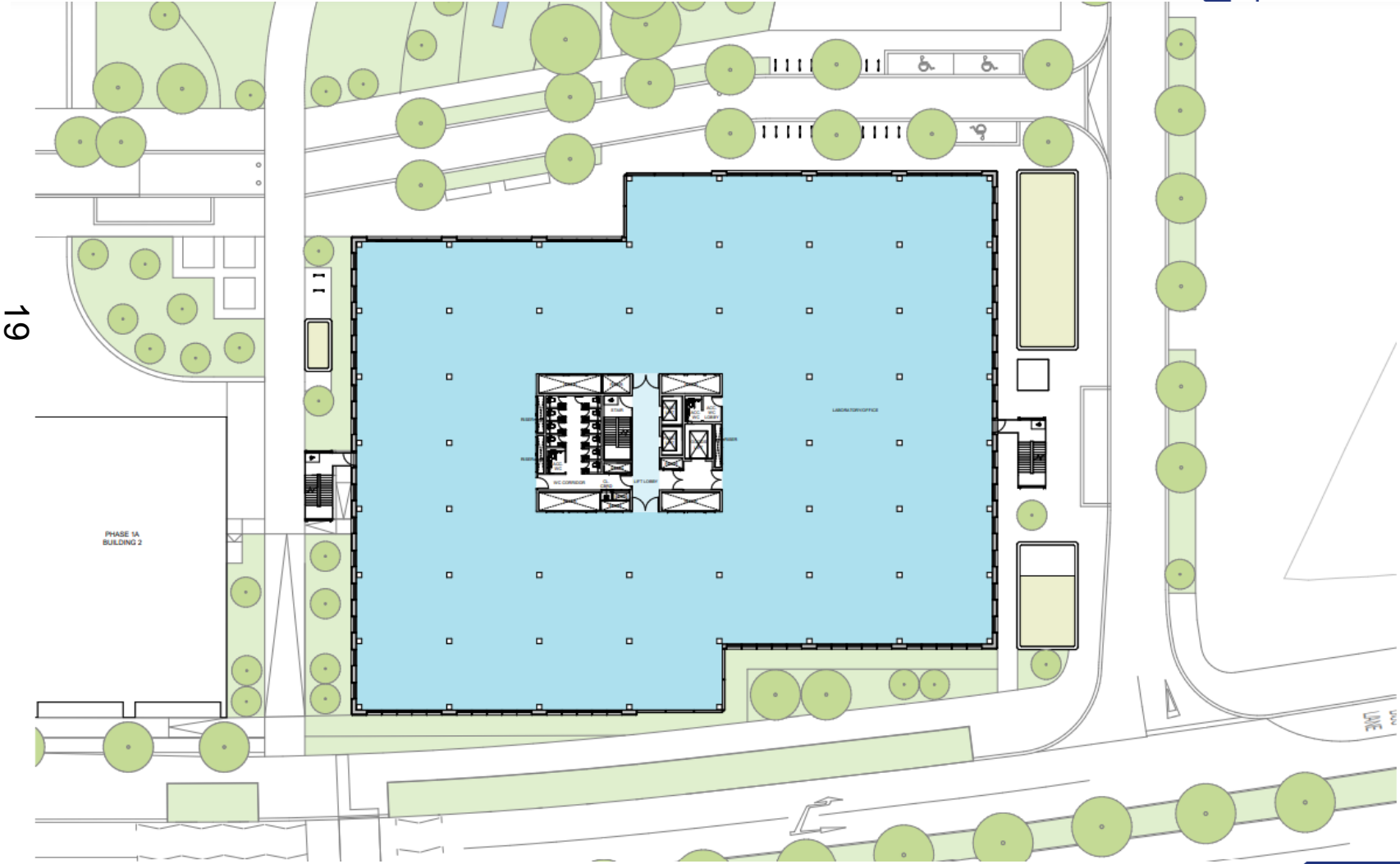
www.oxford.gov.uk



Ground Floor Plan



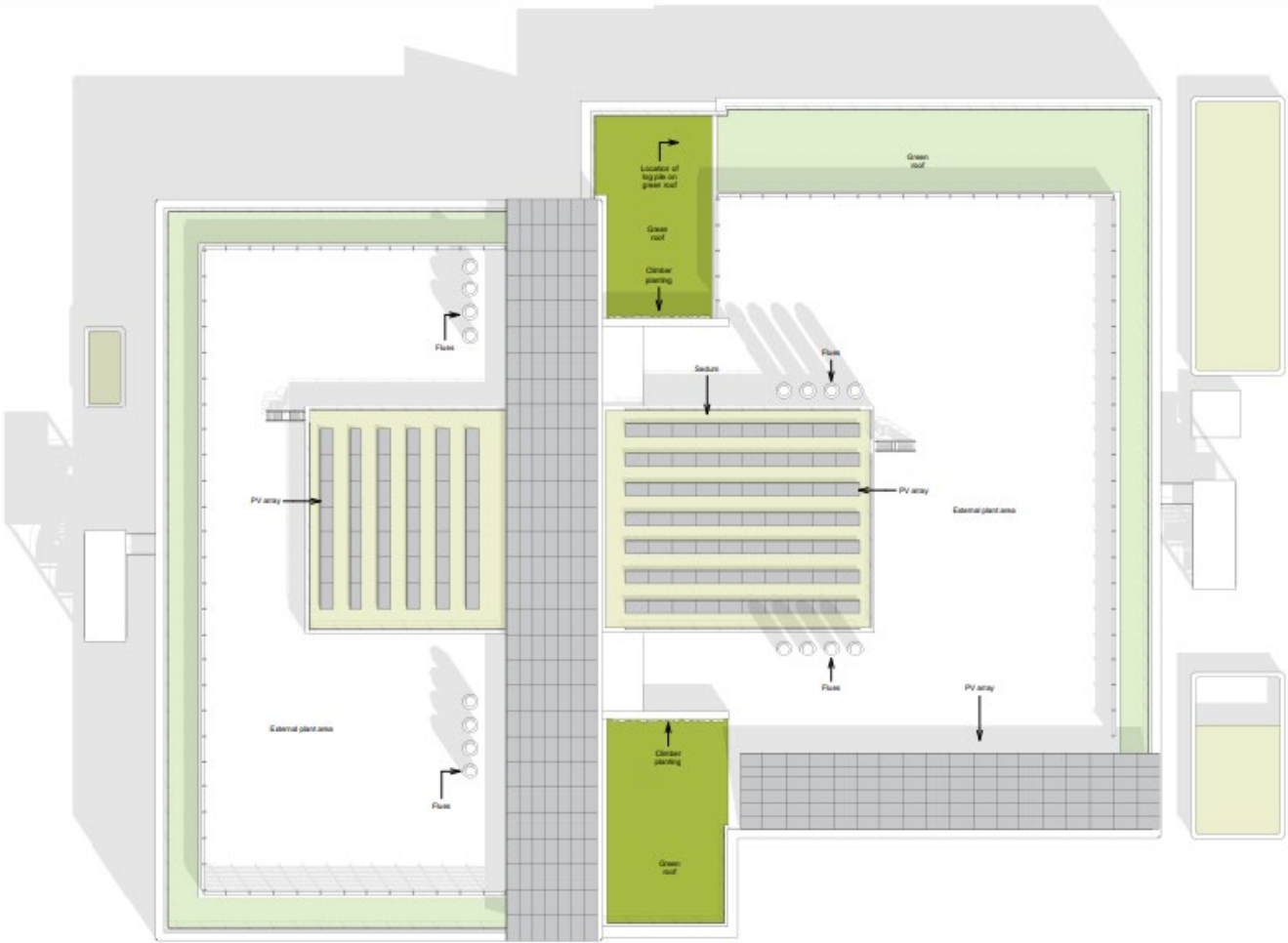
First Floor Plan (Upper Floor Layout)



Roof Plan



20



Updated Masterplan with Phase 2 Proposals

rd.gov.uk



YORK
CITY
COUNCIL



21

Building in Context of Phase 2 Proposals

ford.gov.uk

