

# Oxford City Planning Committee Presentation

Reference Number: 22/01554/FUL

Site Address: Land At Elizabeth Place  
And Westlands Drive

[www.oxford.gov.uk](http://www.oxford.gov.uk)



Agenda Item 4

# Site Plan



# Aerial Plan



# Westlands Drive – View North East towards Site

-gov.uk



# Site Photos

-gov.uk



OXFORD  
CITY  
COUNCIL

29



# Gorse Leas – View North West

gov.uk



**OXFORD  
CITY  
COUNCIL**



# Gorse Leas – View South West

rd.gov.uk



# Elizabeth Place

.gov.uk





# View south east from within Public Open Space

.gov.uk



# View south east from public open space

gov.uk



OXFORD  
CITY  
COUNCIL



# Proposed Site Plan



# Ground Floor Plan

gov.uk



36



# First Floor Plan

[oxford.gov.uk](http://www.oxford.gov.uk)



37



# Second Floor Plan

JOV.UK



# North East and North West Elevations

www.oxford.gov.uk

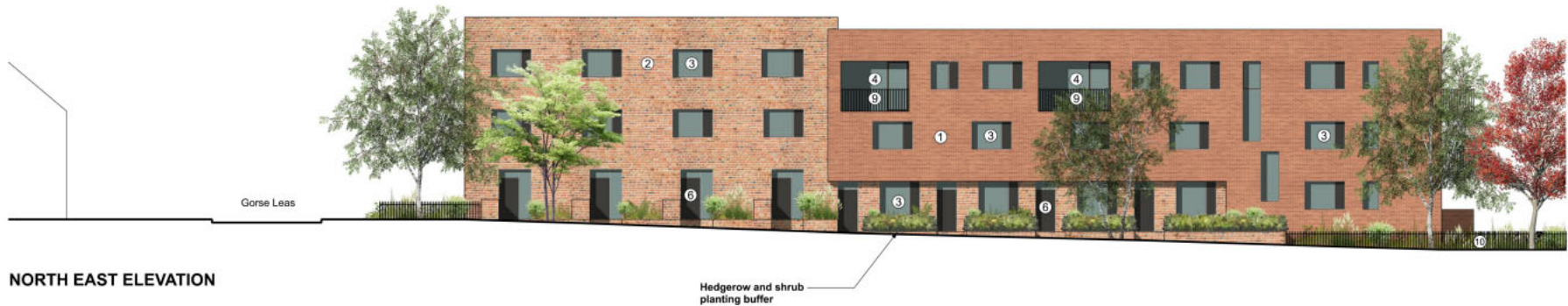


39



NORTH WEST ELEVATION

Shrub planting buffer



NORTH EAST ELEVATION

Hedgerow and shrub planting buffer



# South West and South East Elevations



**SOUTH WEST ELEVATION**



**SOUTH EAST ELEVATION**

