

Oxford City Planning Committee Presentation

www.oxford.gov.uk



Reference Number: 22/03042/RES

3 Site Address: Red Hall, Oxford North



Approved Masterplan

[-gov.uk](https://www.gov.uk)

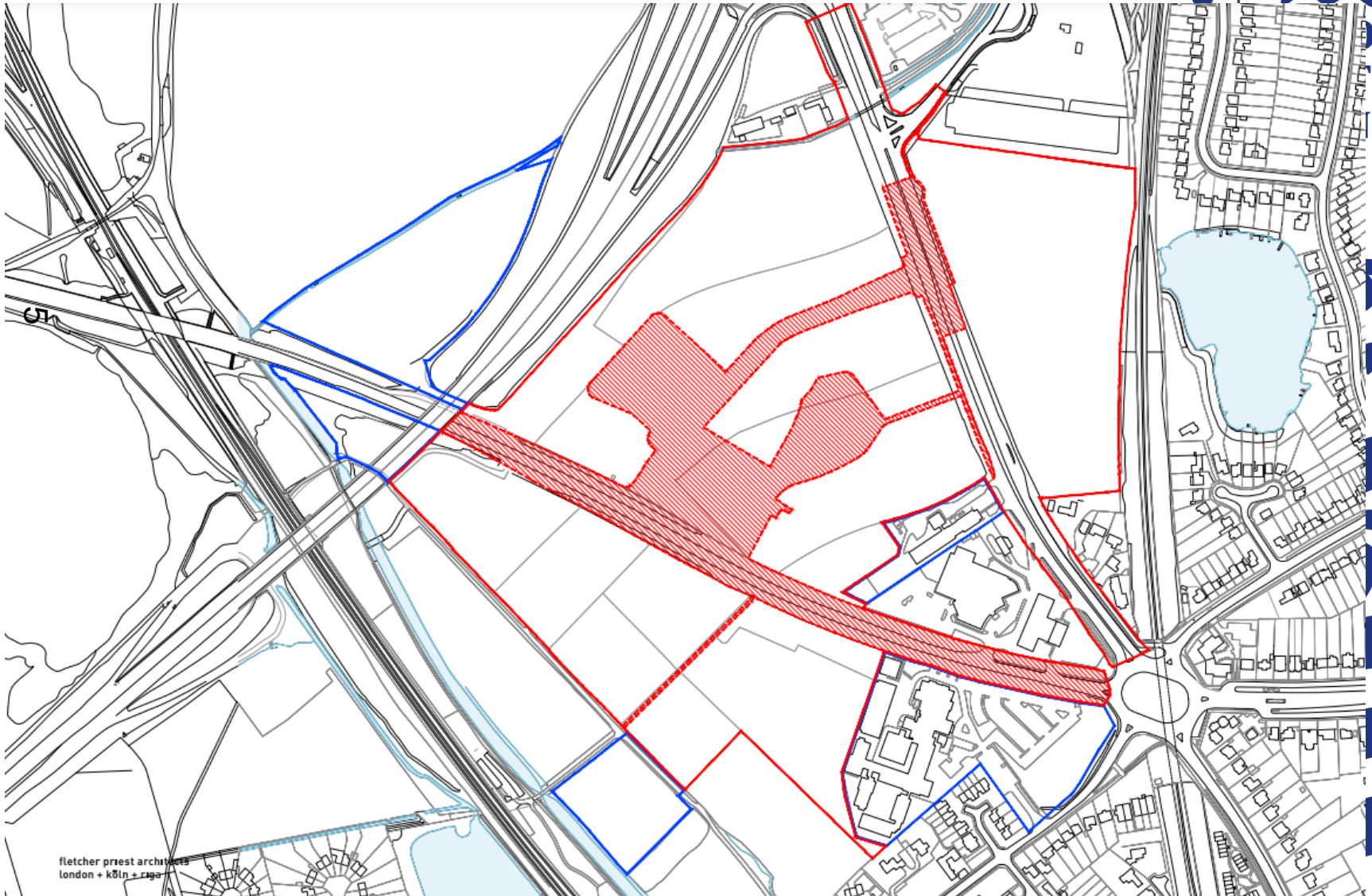


Hybrid Permission - Detailed/Outline Consent

ord.gov.uk



CITY OF
LONDON
COUNCIL



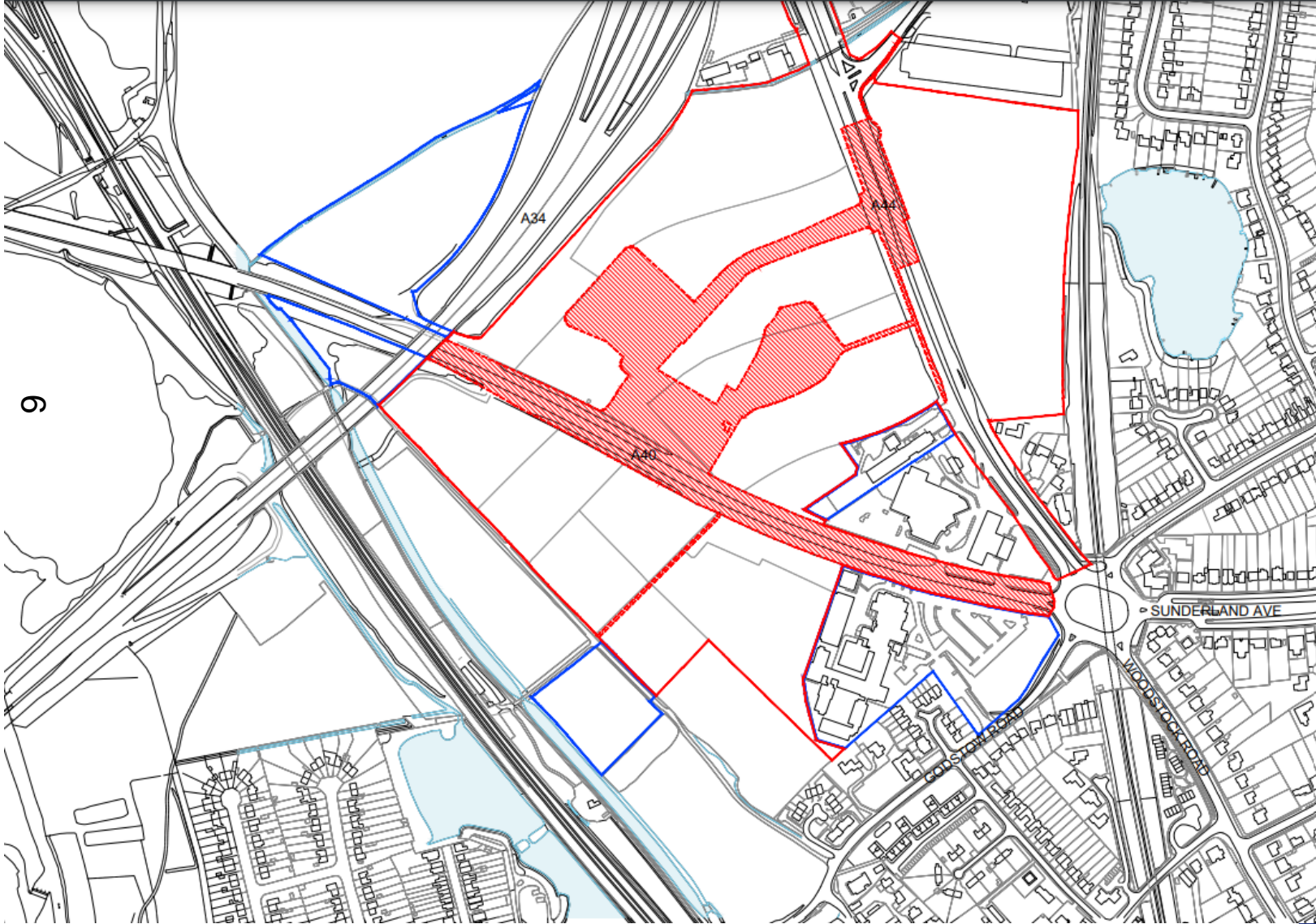
fletcher priest architects
london + köln + zürich

Changes proposed under Section 96A application

rd.gov.uk



OXFORD
CITY
COUNCIL



Site Photo – Red Hall Location

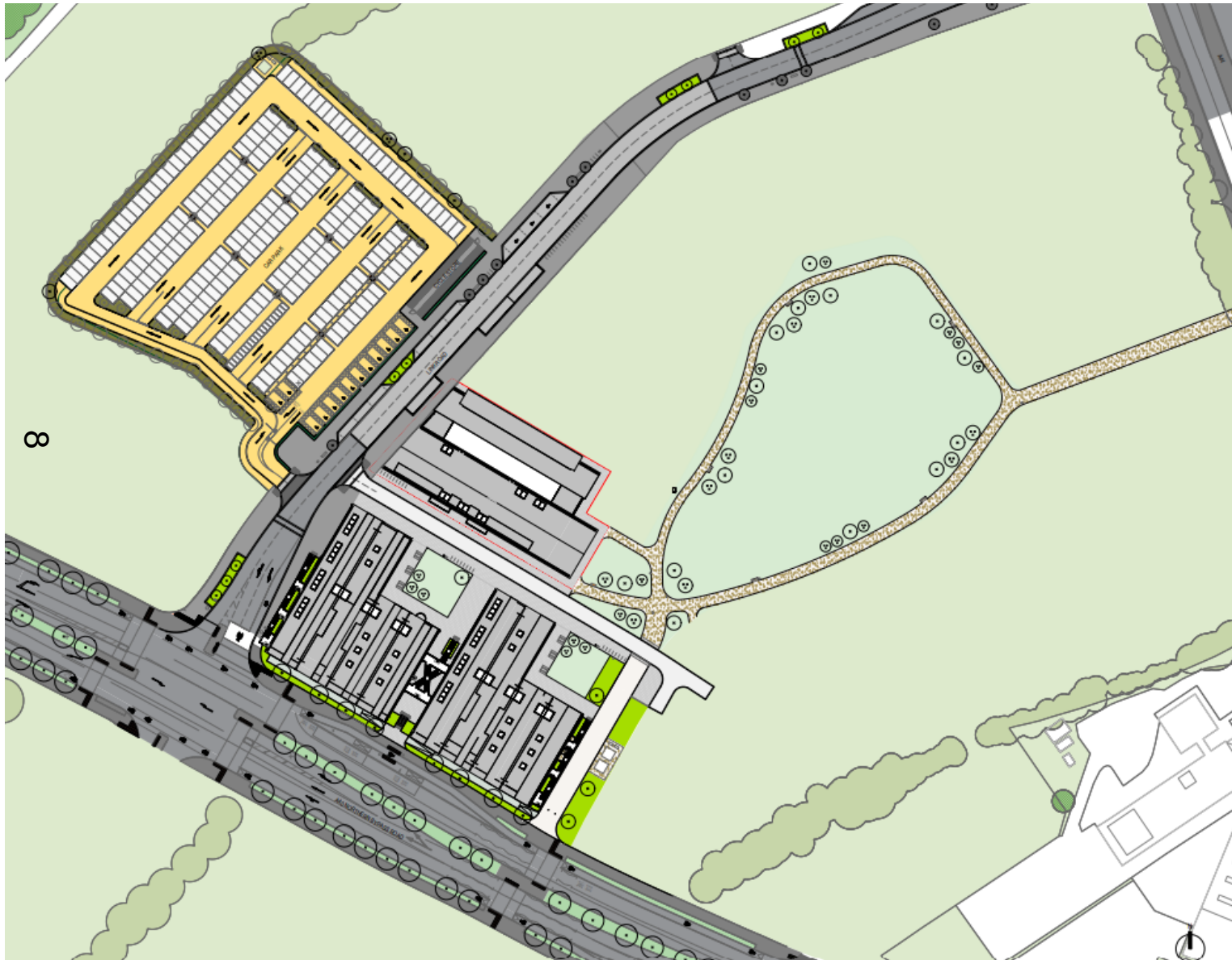
l.gov.uk



**OXFORD
CITY
COUNCIL**



Block Plan



Red Hall – As Approved

6

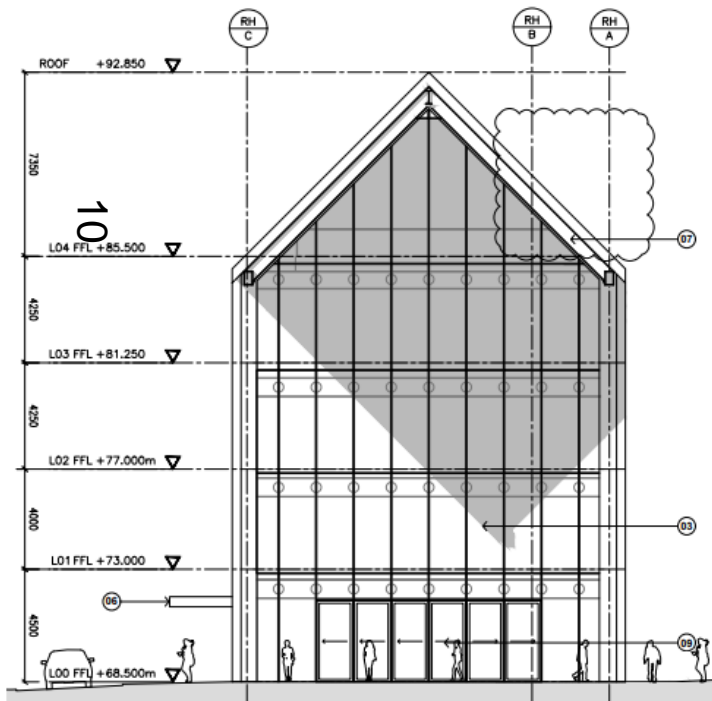


www.oxford.gov.uk

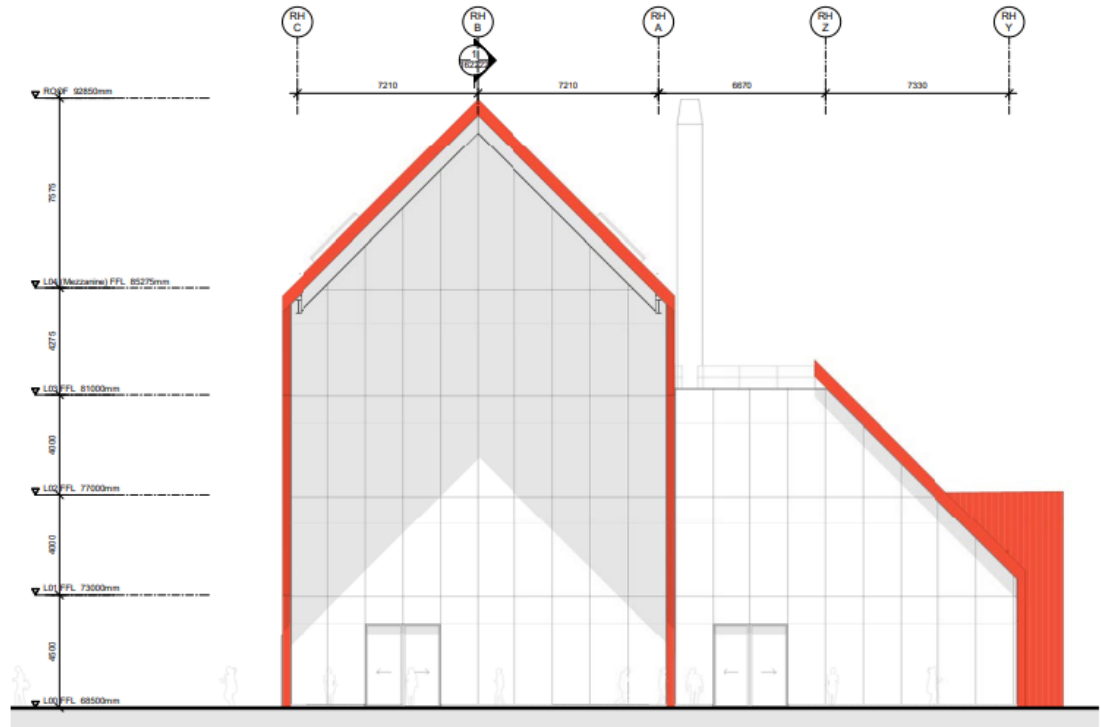


Consented and Proposed – South East Elevation

www.oxford.gov.uk



Consented south-east elevation, drawing A 1385 PA 2123 A



Proposed south-east elevation, drawing ON-FPA-RH-ZZ-DR-A-162123

Visual from Public Open Space

www.oxford.gov.uk



11



North East Elevation

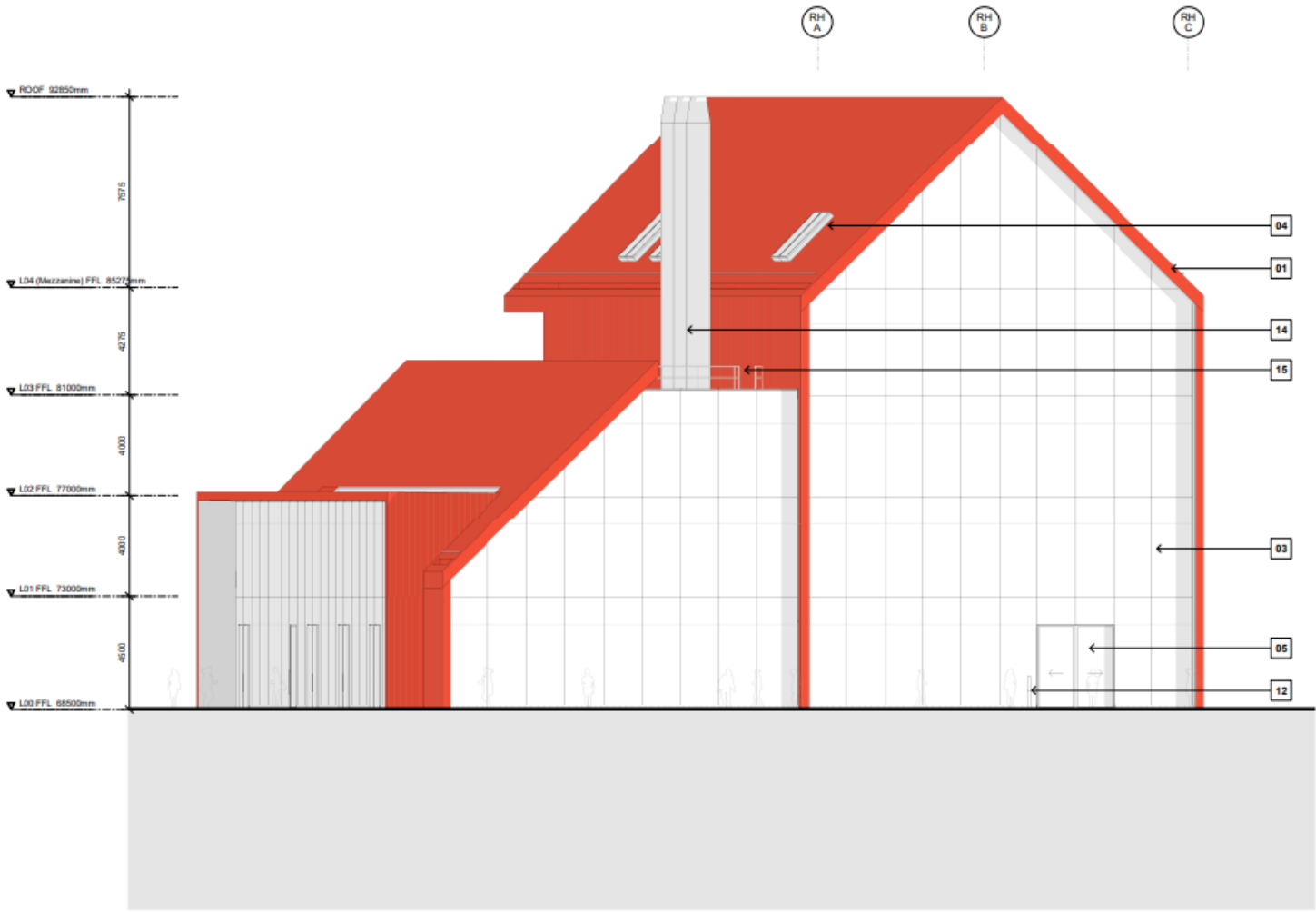


North West Elevation



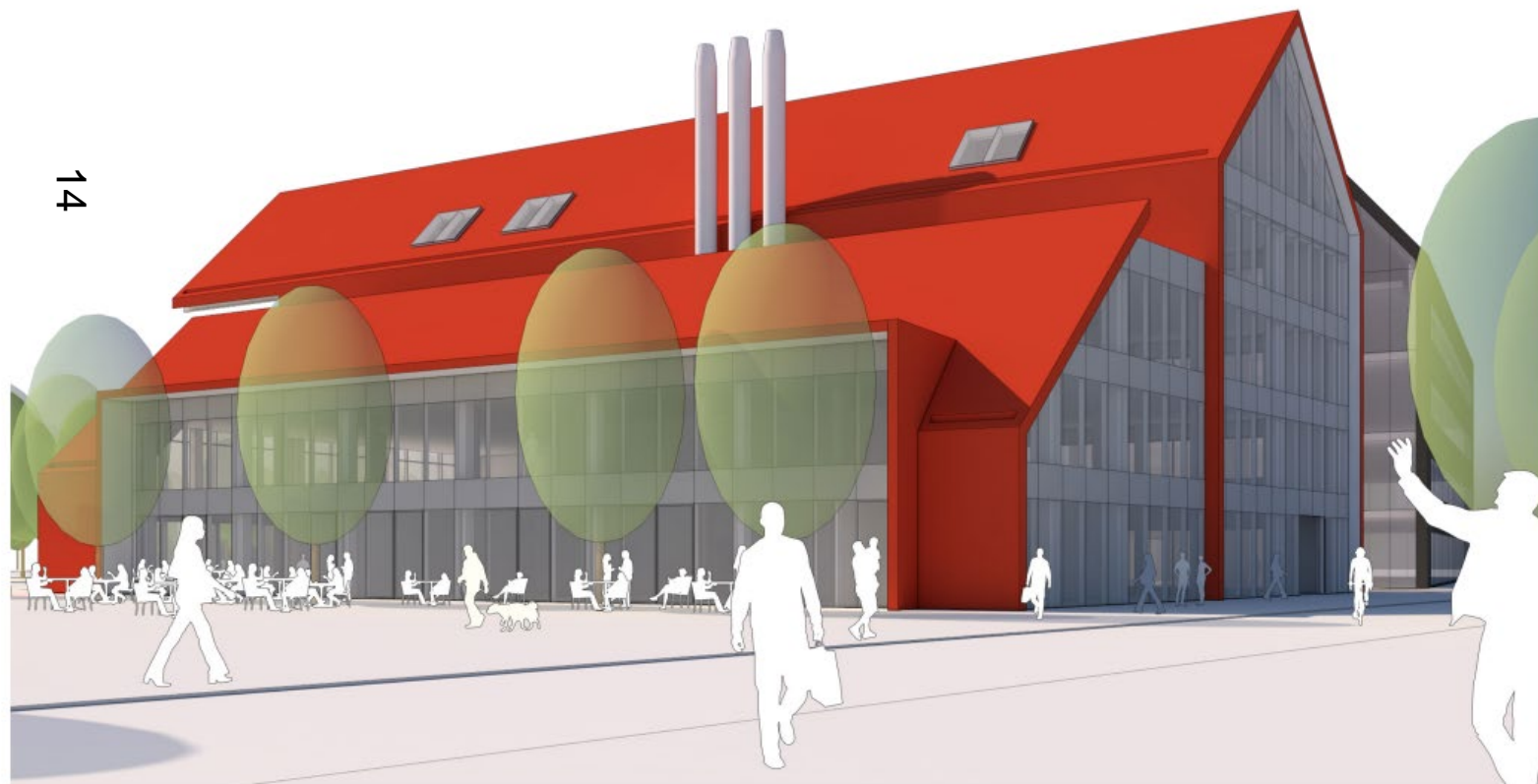
CITY
COUNCIL

13



Visual from Primary Street

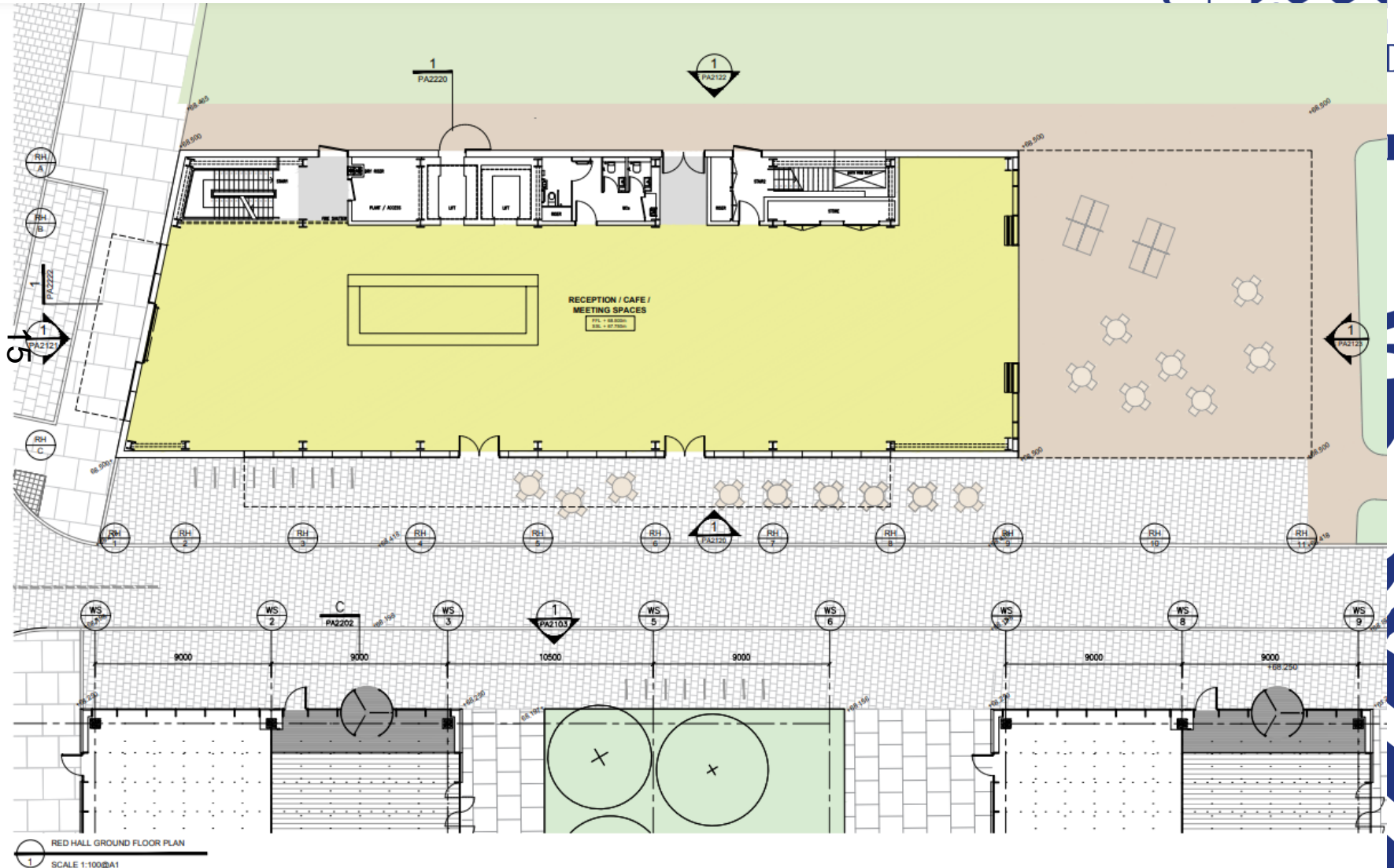
v.oxford.gov.uk



14



Consented Ground Floor Plan



Proposed Ground Floor Plan



Ground Floor – Relationship to External Space

www.oxford.gov.uk



17

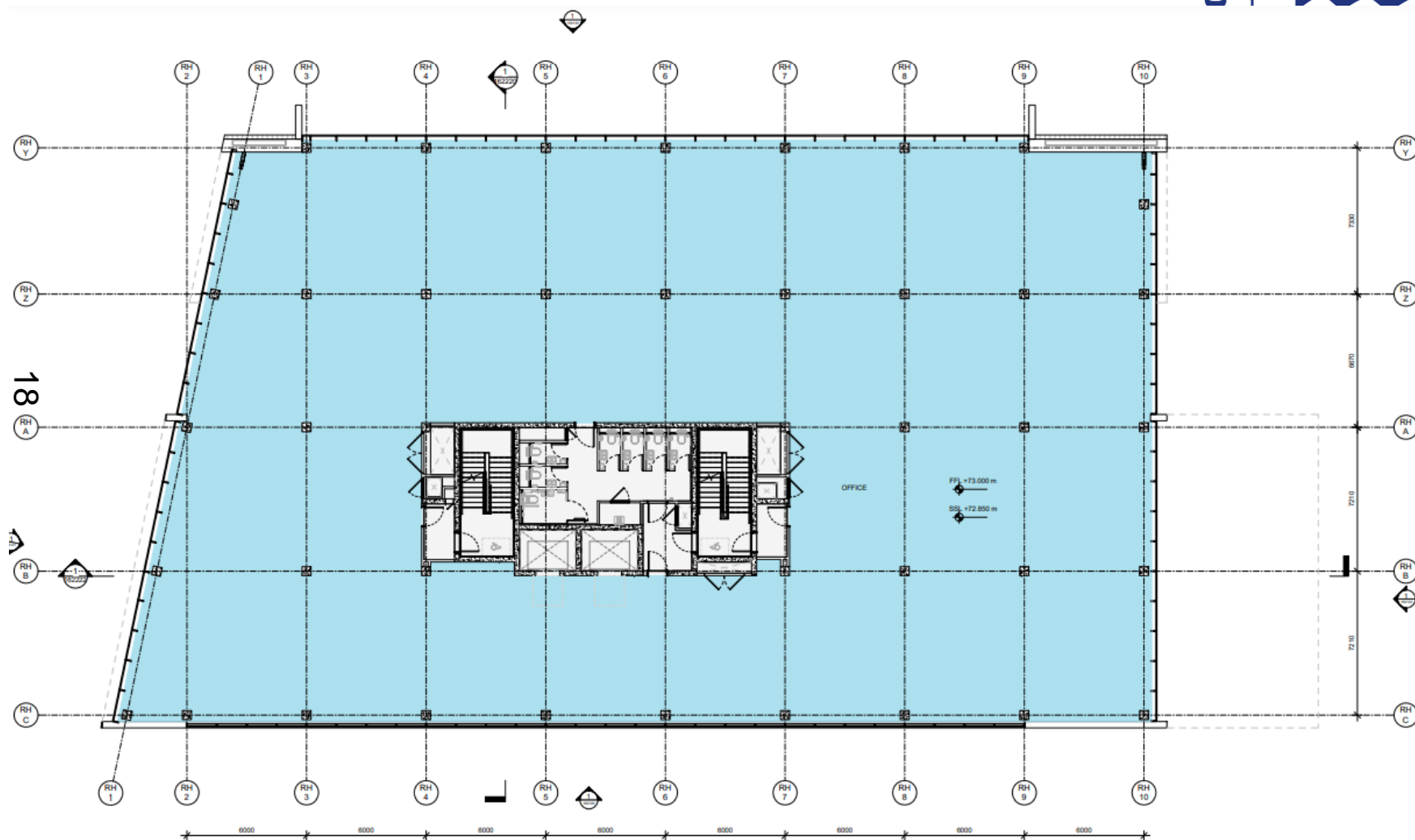


ord.gov.uk

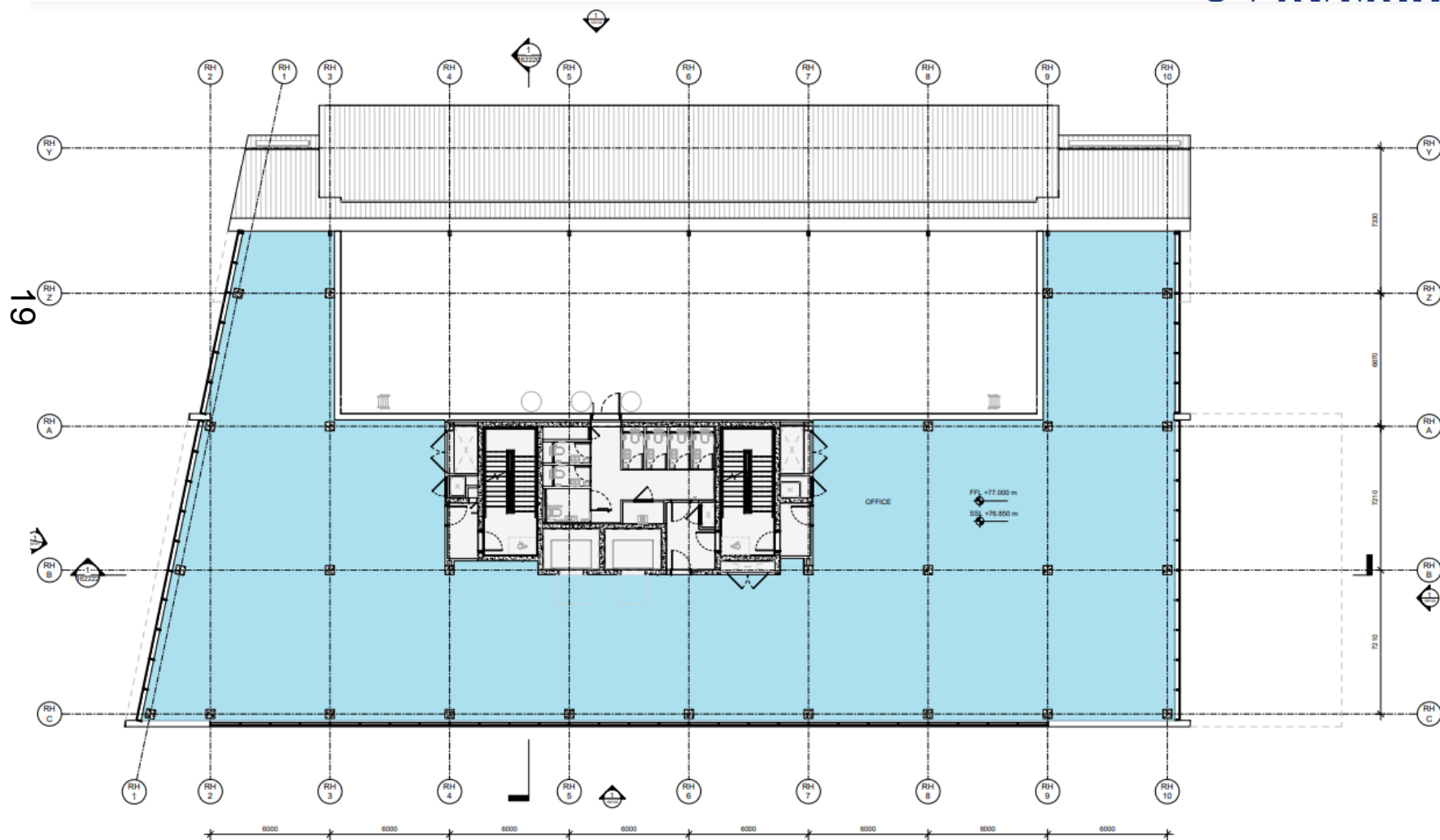


D

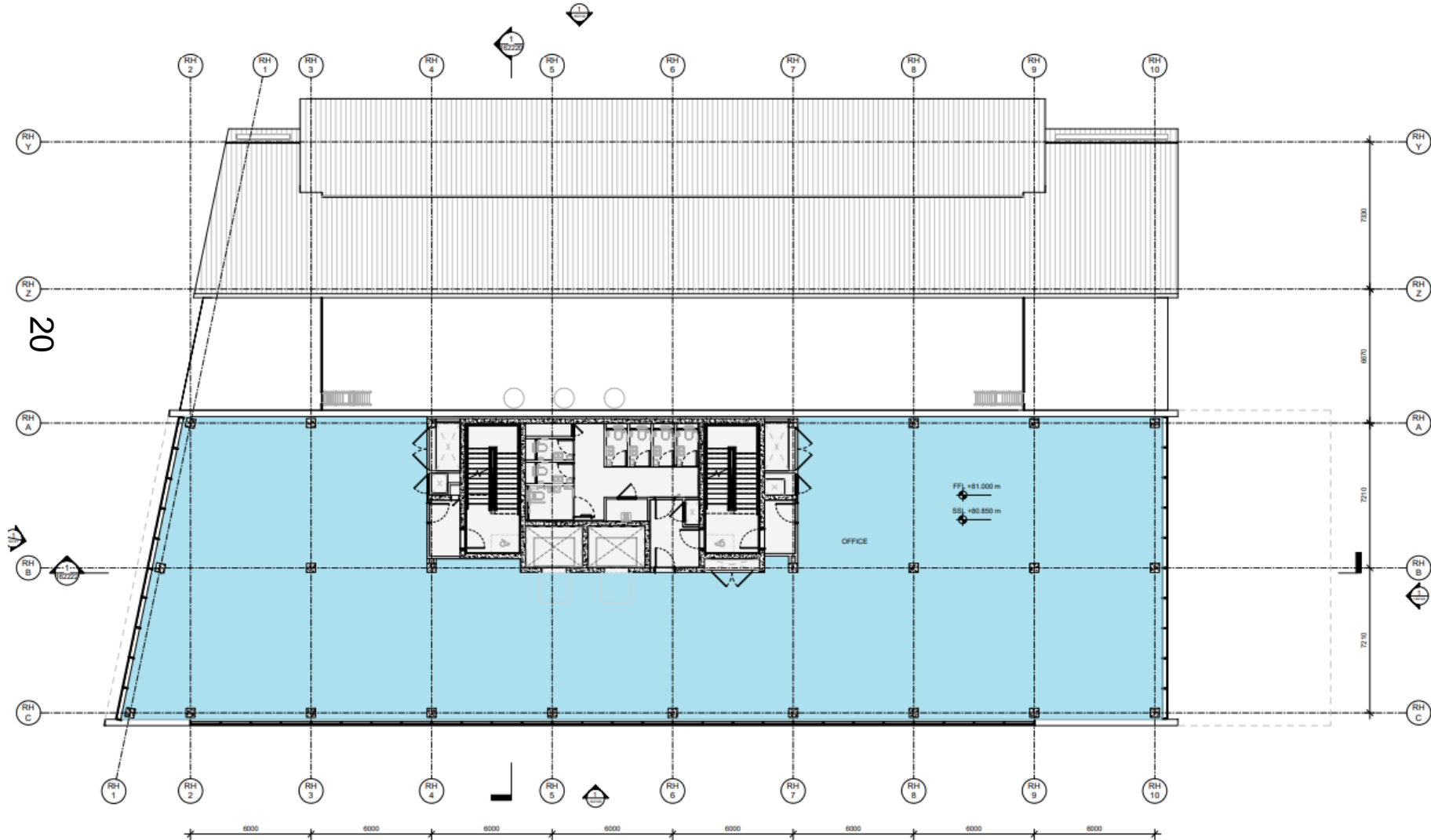
L



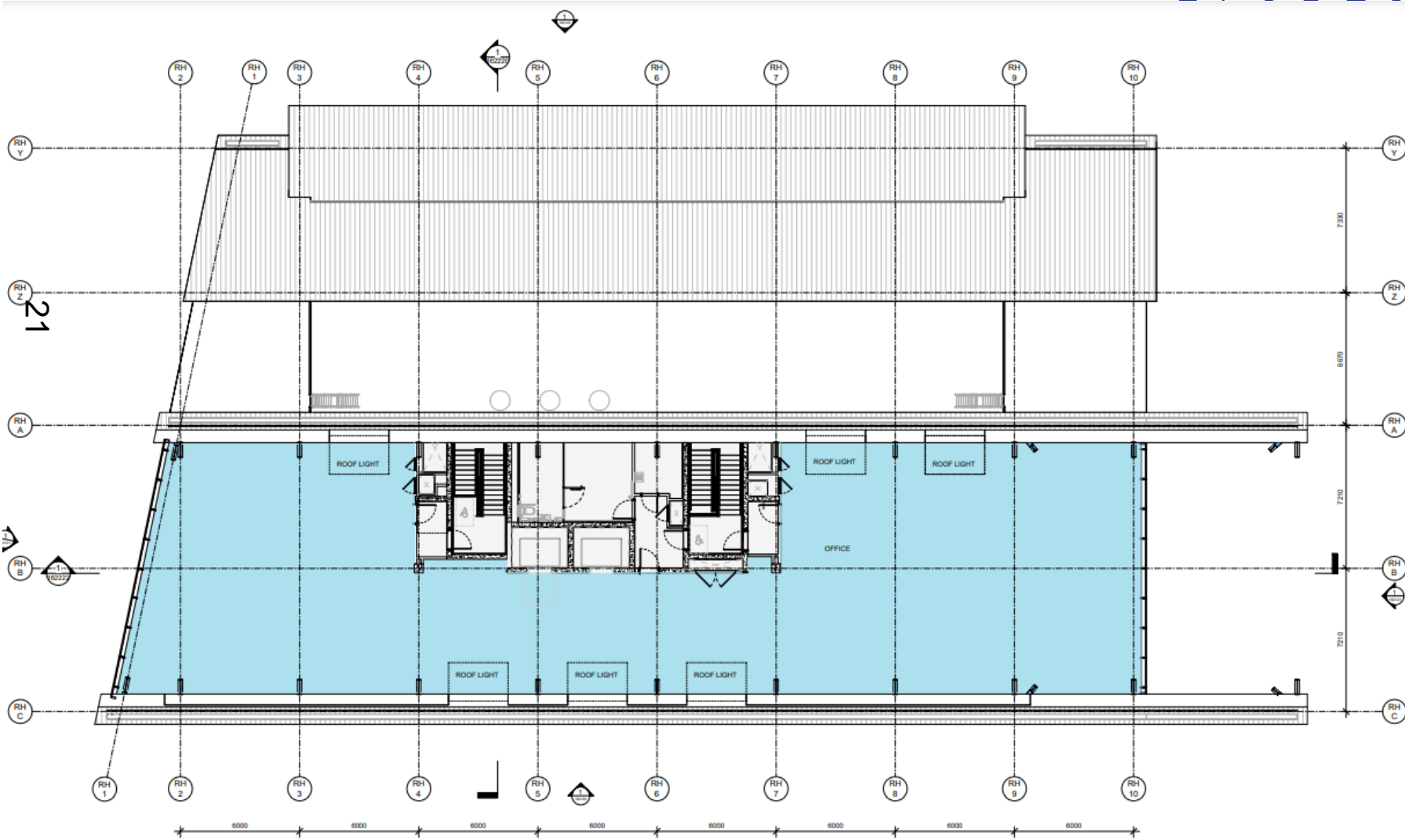
xford.gov.uk



Third Floor Plan



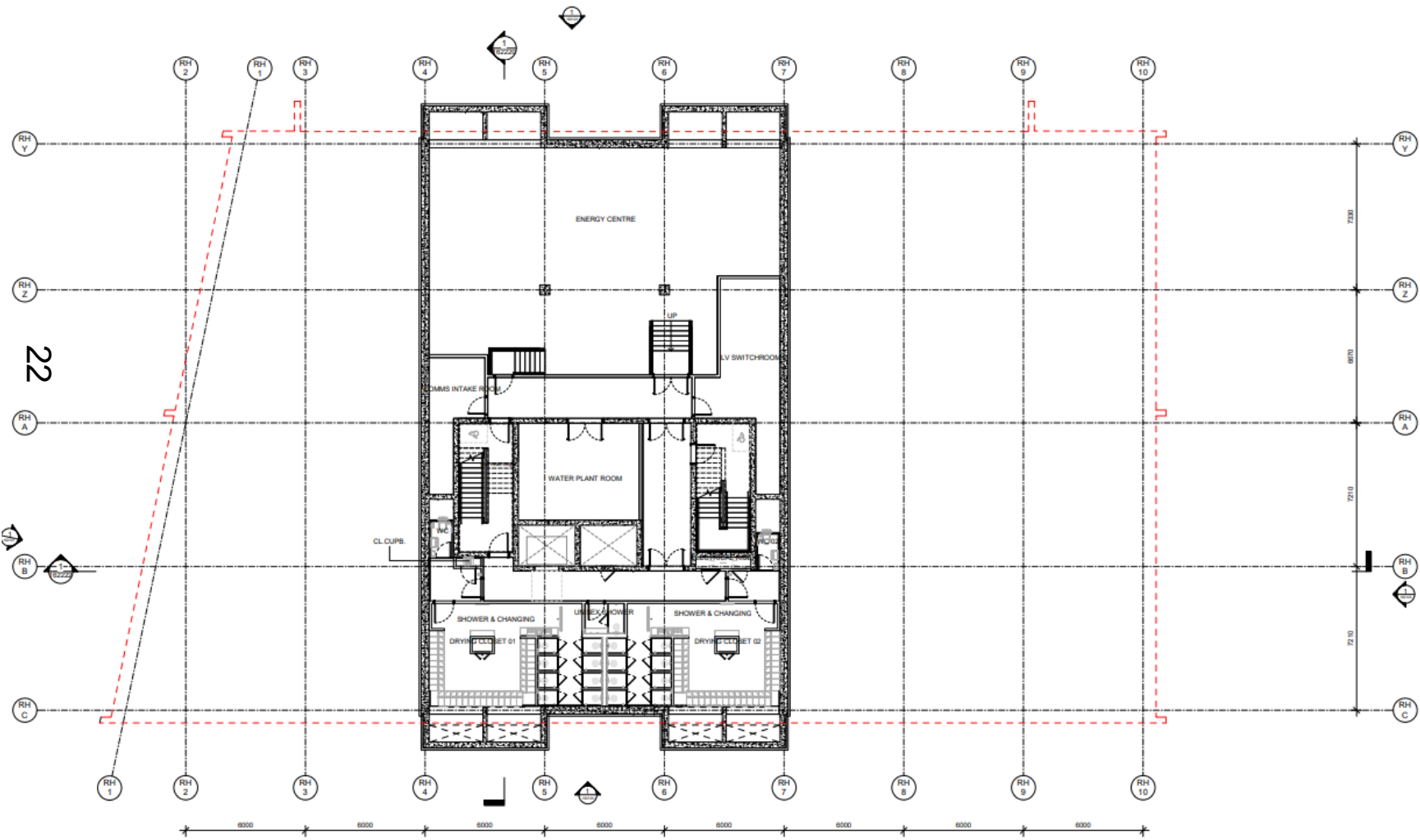
Fourth Floor Plan



Basement



RD
Y
CIL





23

This page is intentionally left blank