

# Oxford City Planning Committee Presentation

[www.oxford.gov.uk](http://www.oxford.gov.uk)



**22/00841/FUL**

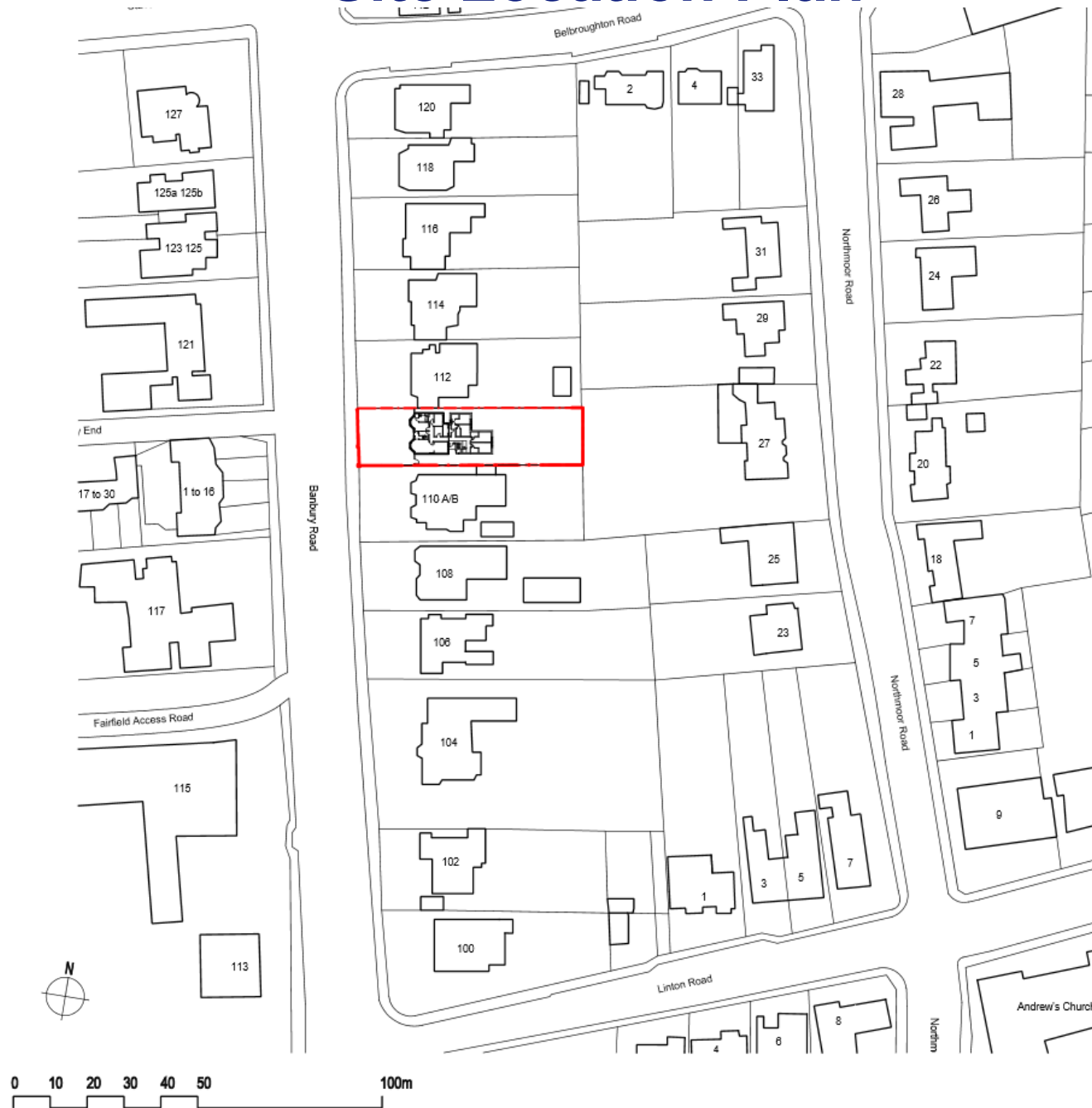
51

**Cotswold House  
110C Banbury Road**

**24<sup>th</sup> January 2023**



# Site Location Plan



# View of front of 110C Banbury Road



[www.oxford.gov.uk](http://www.oxford.gov.uk)





# View of 110AB, 100C and 112 Banbury Road

[www.oxford.gov.uk](http://www.oxford.gov.uk)





# Rear of 110C Banbury Road

[www.oxford.gov.uk](http://www.oxford.gov.uk)





# Shed at rear of 110C Banbury Road

[www.oxford.gov.uk](http://www.oxford.gov.uk)





# View of 112 from rear of 110C Banbury Road



[www.oxford.gov.uk](http://www.oxford.gov.uk)





# Front Gap between 110C and 112 Banbury Road



[www.oxford.gov.uk](http://www.oxford.gov.uk)





# Gap between 110C and 112 Banbury Road at rear



[www.oxford.gov.uk](http://www.oxford.gov.uk)



**OXFORD  
CITY  
COUNCIL**





# Rear Gap between 110C and 112 Banbury Road

ford.gov.uk



OXFORD  
CITY  
COUNCIL





# Boundary wall and site elevation 110A/B Banbury Road

[www.oxford.gov.uk](http://www.oxford.gov.uk)



# Gap between 110A/B and 110C towards Banbury Road



[www.oxford.gov.uk](http://www.oxford.gov.uk)



**OXFORD  
CITY  
COUNCIL**



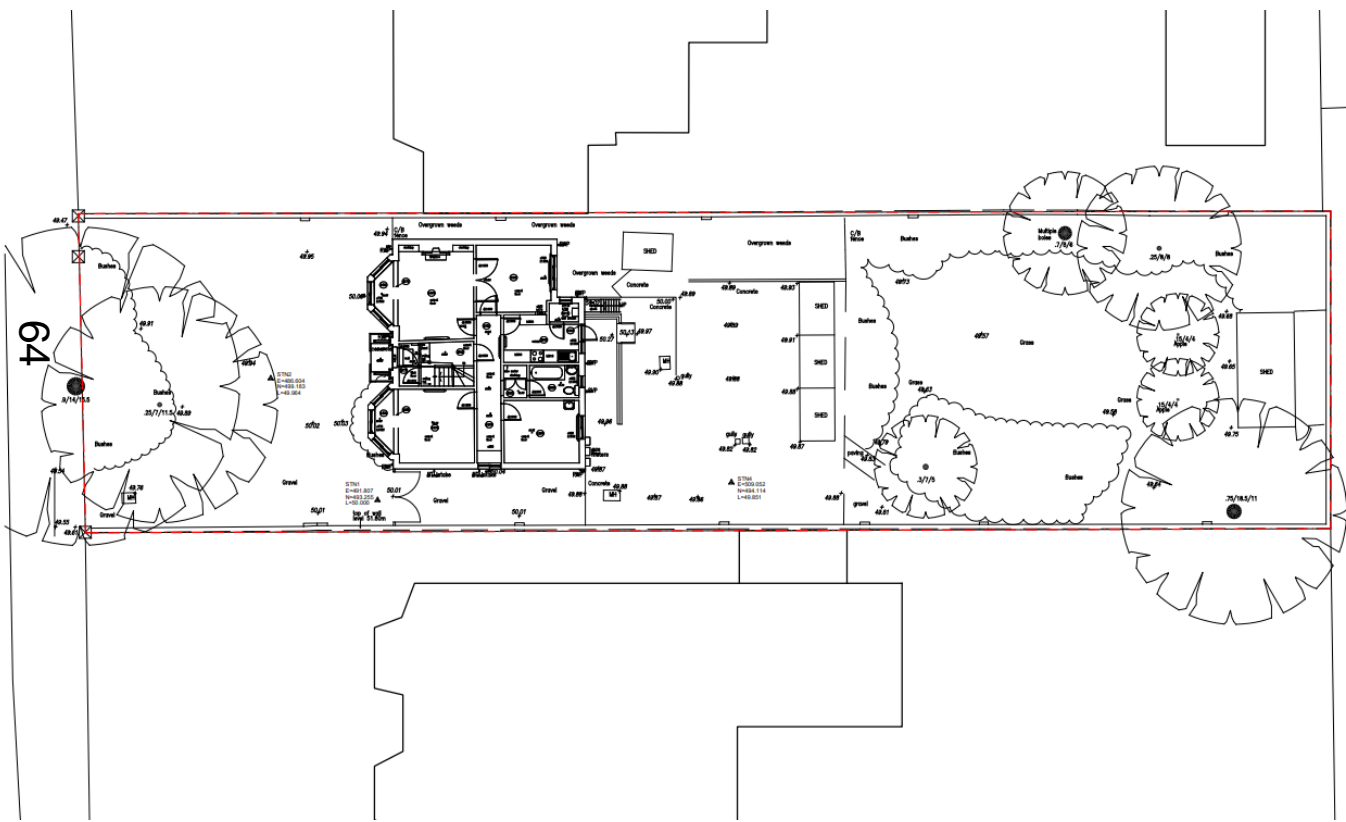


# View of rear garden of 110C Banbury Road

[www.oxford.gov.uk](http://www.oxford.gov.uk)

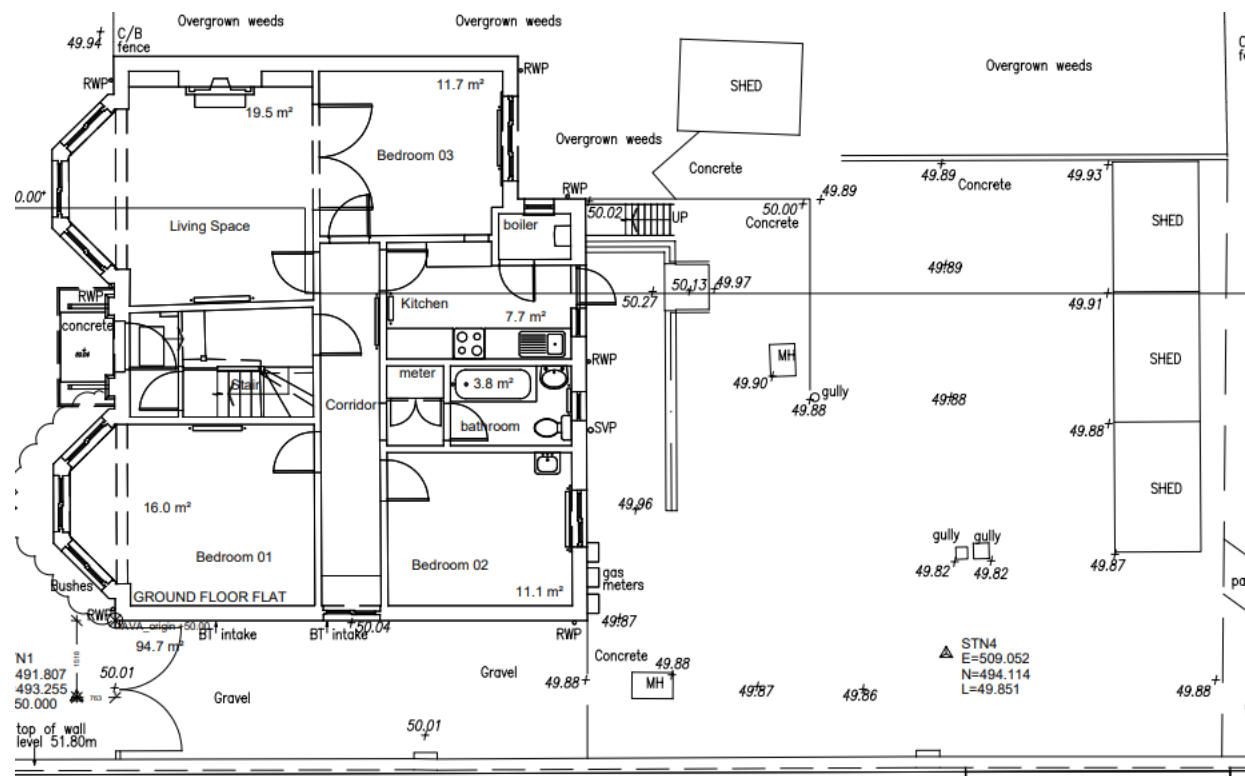


# Existing Block Plan

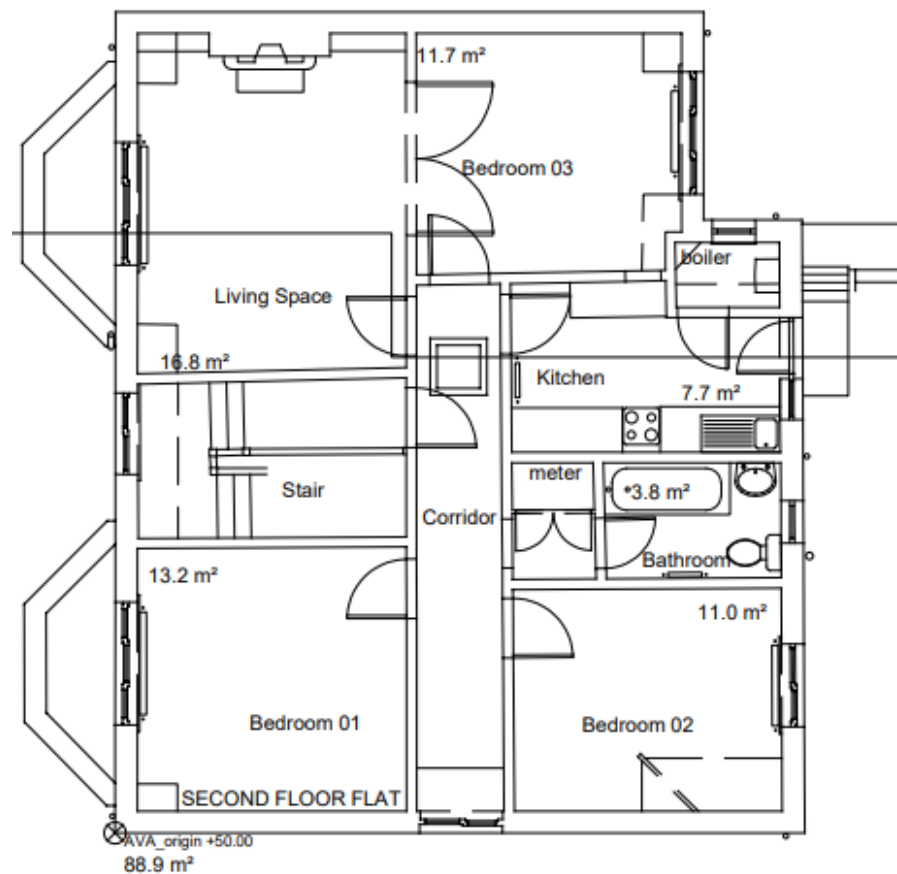
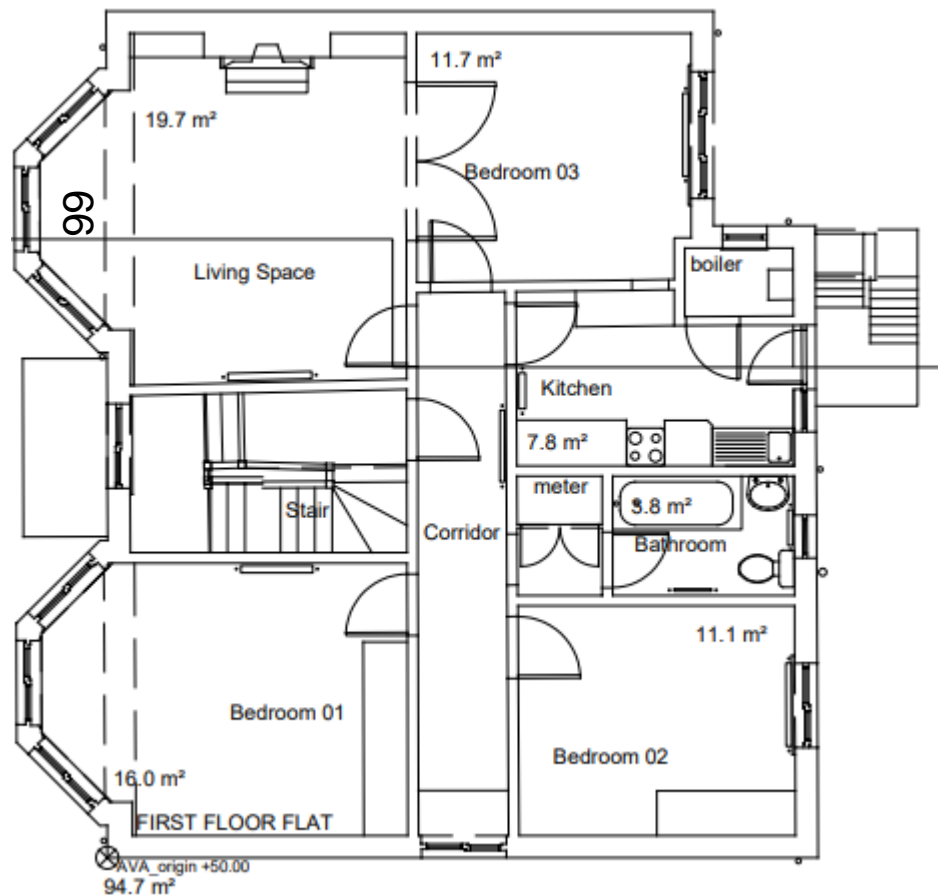




## 65



# Existing First and Second Floors



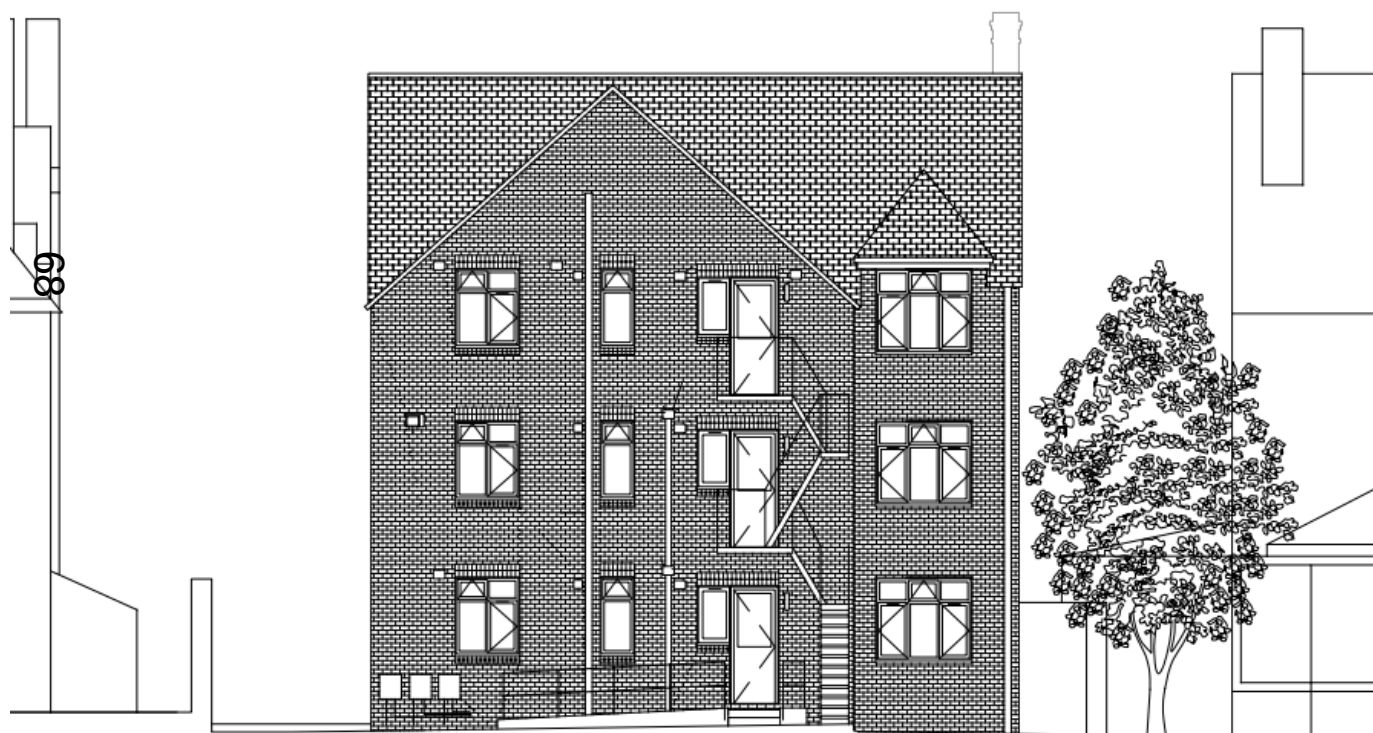


# Existing Front Elevation

[www.oxford.gov.uk](http://www.oxford.gov.uk)



# Existing Rear Elevation

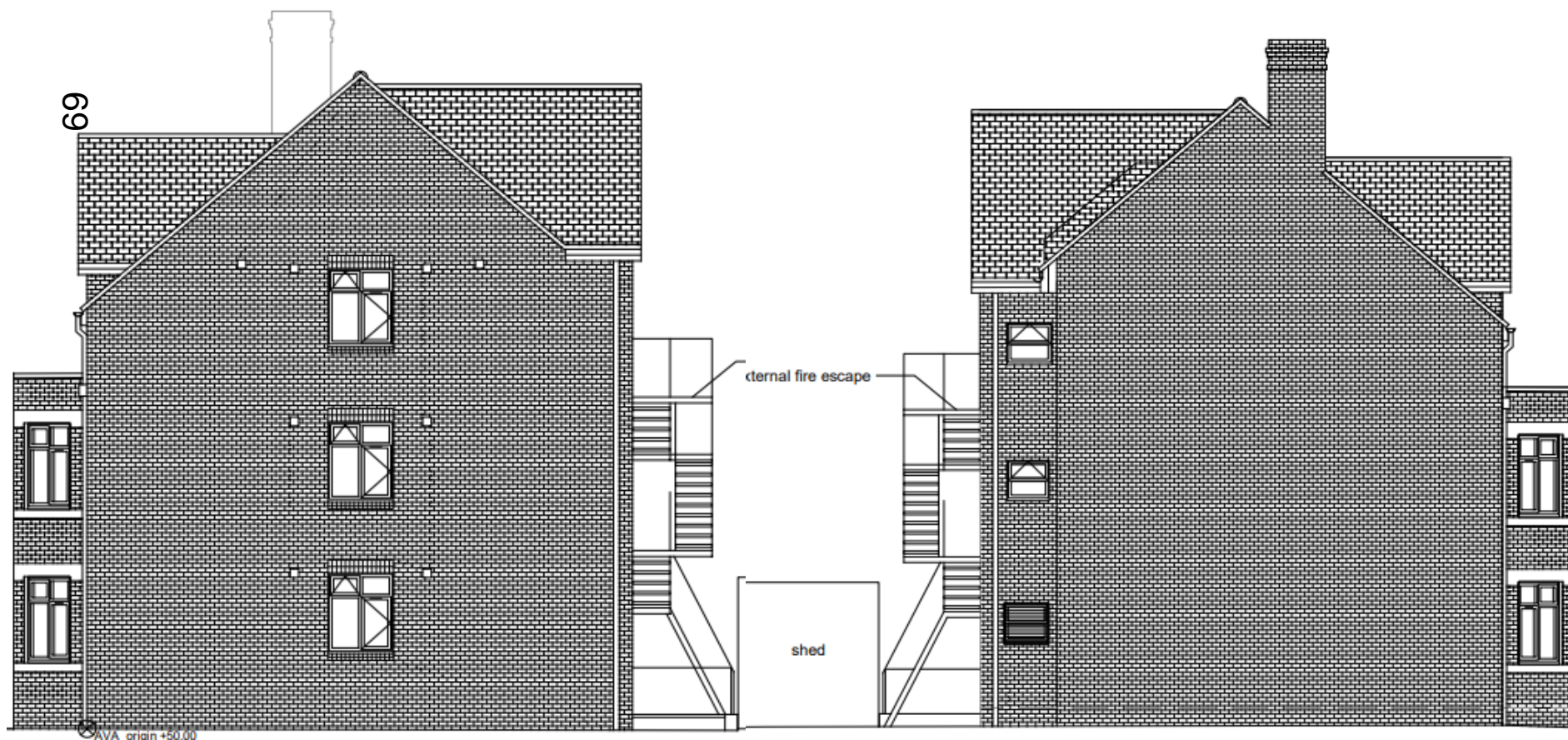


[www.oxford.gov.uk](http://www.oxford.gov.uk)

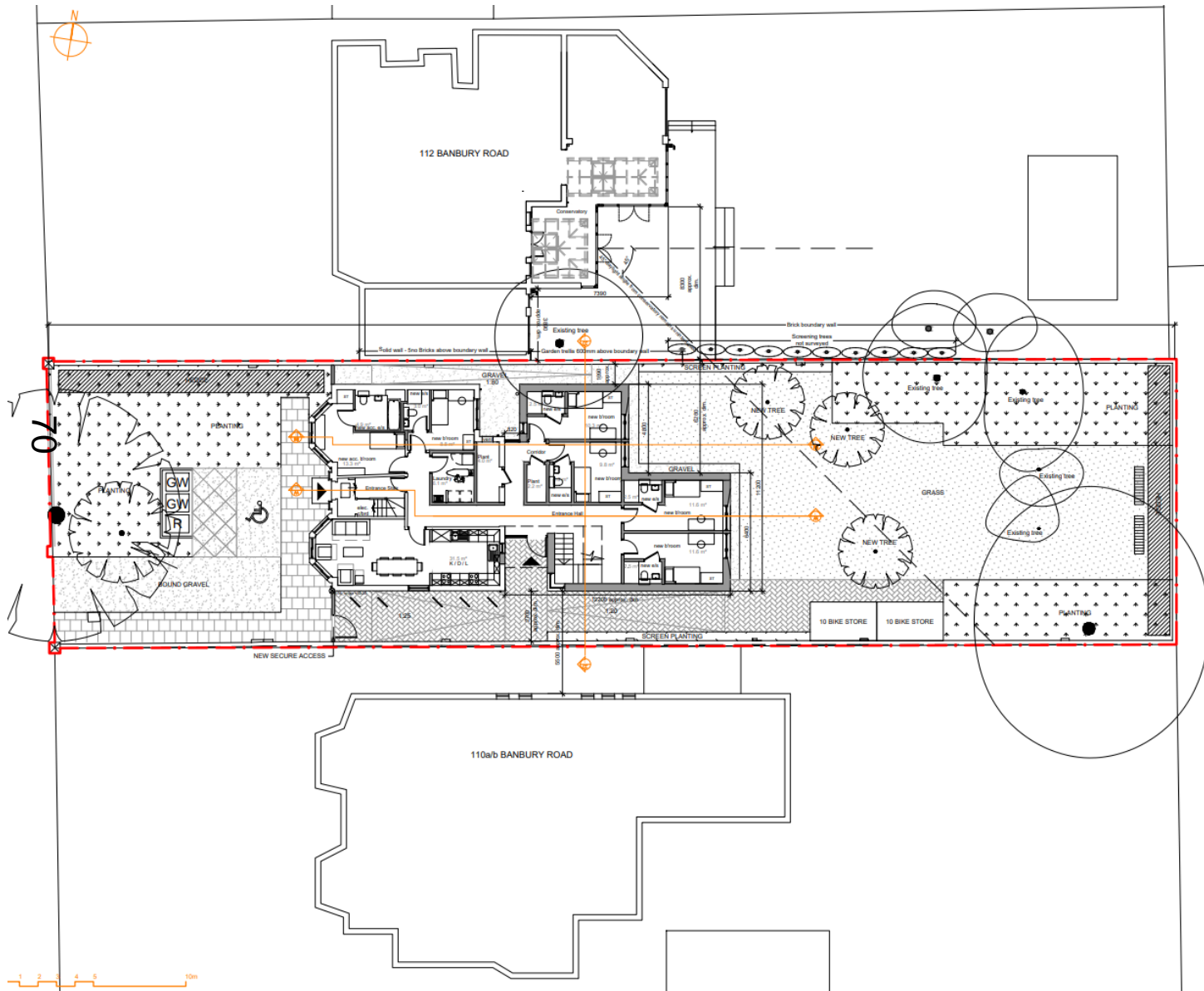




# Existing Side Elevations



# Proposed Site Plan



[www.oxford.gov.uk](http://www.oxford.gov.uk)





# Proposed Front Elevation

[www.oxford.gov.uk](http://www.oxford.gov.uk)



# Proposed Rear Elevation

[www.oxford.gov.uk](http://www.oxford.gov.uk)





# Proposed Side Elevation (North)



Proposed Elevation



Elevation with party wall



# Proposed Side Elevation (South)

[www.oxford.gov.uk](http://www.oxford.gov.uk)





# Visual from the North



[www.oxford.gov.uk](http://www.oxford.gov.uk)



# Visual from the South



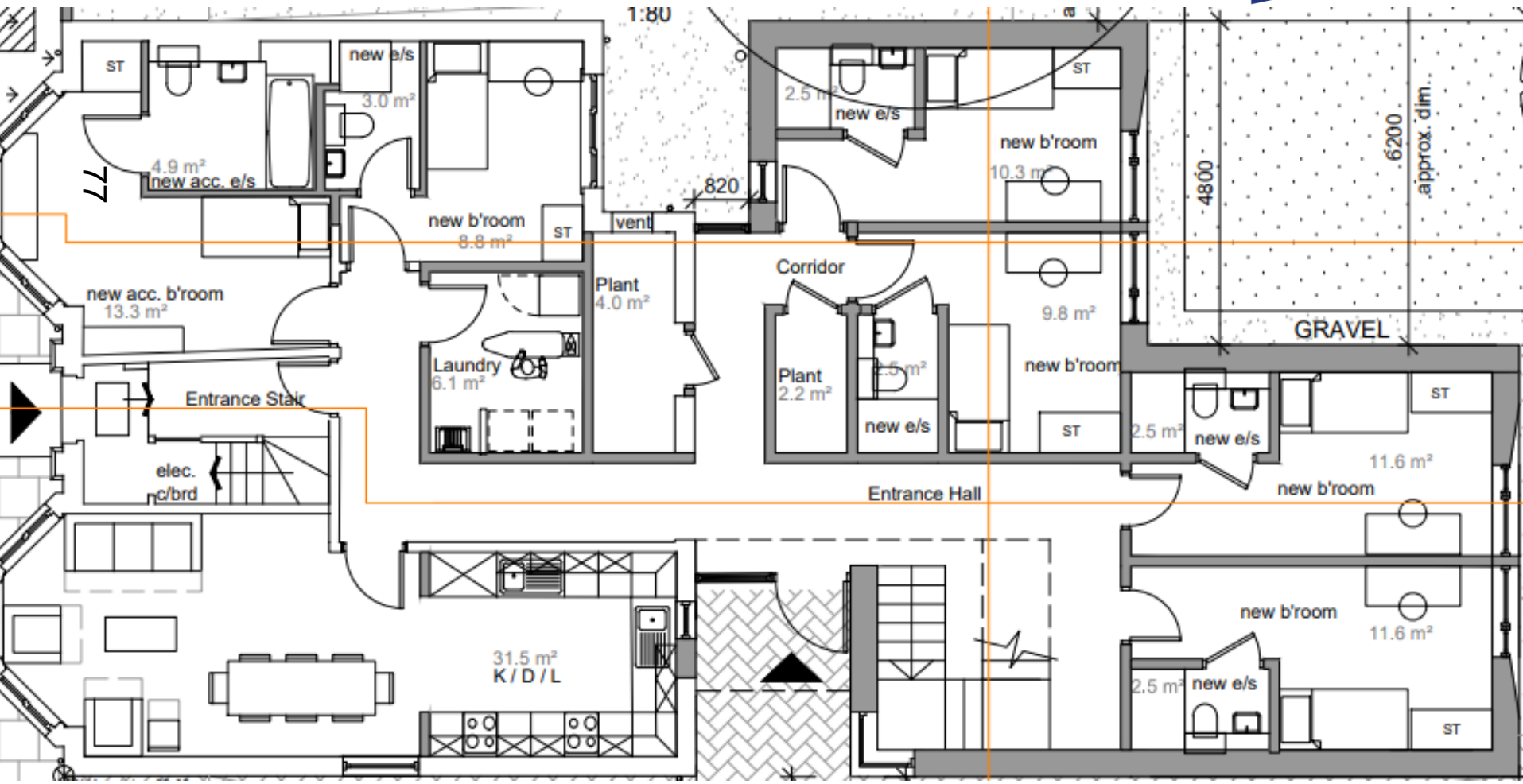
[www.oxford.gov.uk](http://www.oxford.gov.uk)





# Proposed Ground Floor

[www.oxford.gov.uk](http://www.oxford.gov.uk)



## Proposed First Floor

