

# Oxford City Planning Committee Presentation

[www.oxford.gov.uk](http://www.oxford.gov.uk)



**21/01388/FUL**

3

**Court Place Gardens Iffley**

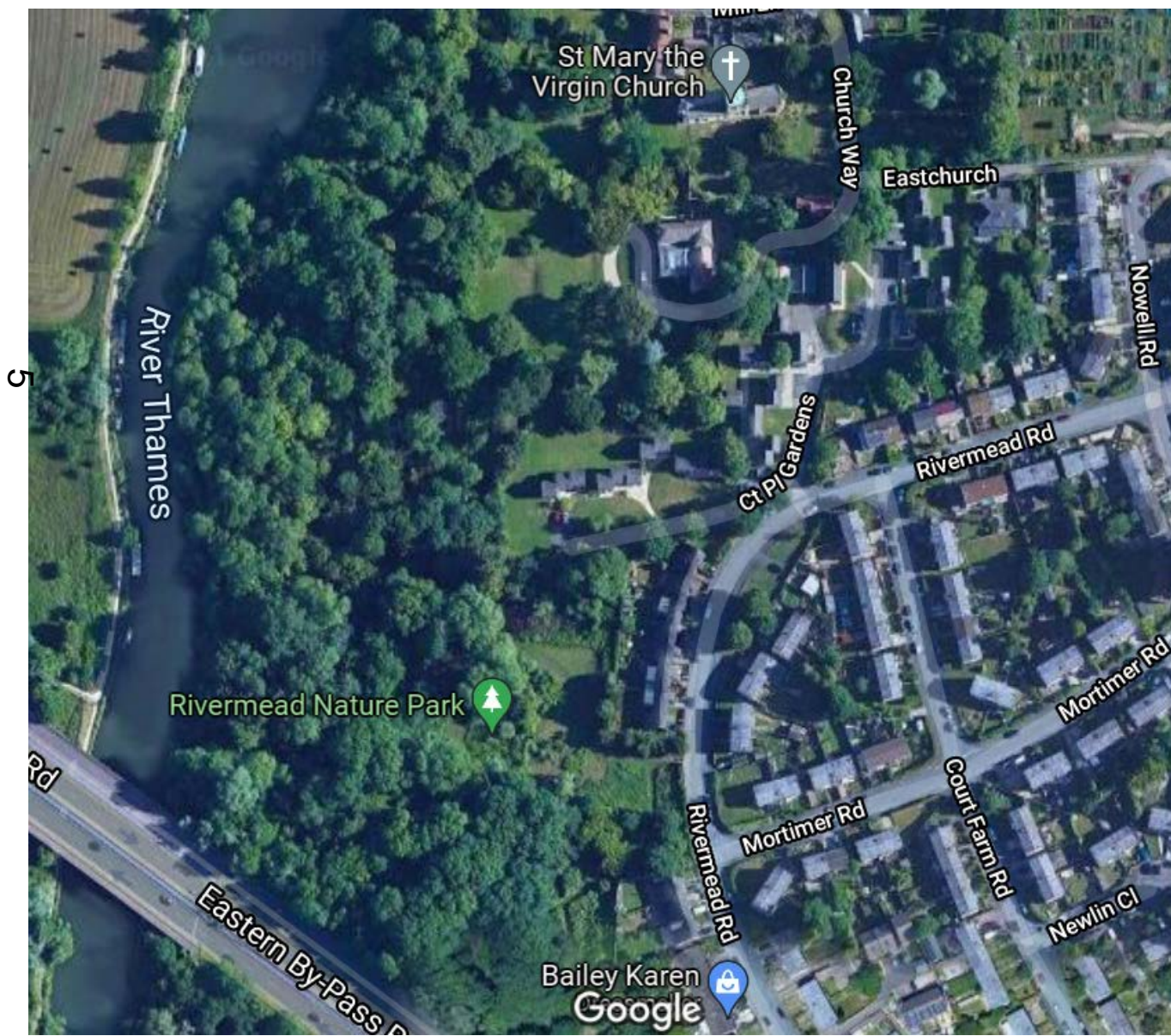
**22<sup>th</sup> November 2021**



# Site Location Plan



# Aerial Photo



[www.oxford.gov.uk](http://www.oxford.gov.uk)



# Approach to site from east, Rivermead Road



[www.oxford.gov.uk](http://www.oxford.gov.uk)





# Entrance from Rivermead Road



[www.oxford.gov.uk](http://www.oxford.gov.uk)



# View from within the site looking west toward woodland on southern boundary

[www.oxford.gov.uk](http://www.oxford.gov.uk)



8



# Views from within the site



[www.oxford.gov.uk](http://www.oxford.gov.uk)



# Views from within west of garden

[www.oxford.gov.uk](http://www.oxford.gov.uk)





# Views from within the garden to the west



# View From Church Way

[www.oxford.gov.uk](http://www.oxford.gov.uk)



# View from Eastchurch



# Proposed Site Plan



[www.oxford.gov.uk](http://www.oxford.gov.uk)





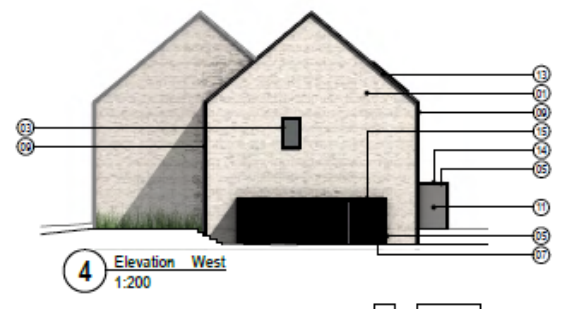
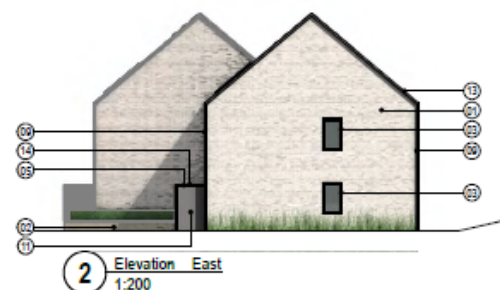
# Typical East West Elevation

[www.oxford.gov.uk](http://www.oxford.gov.uk)

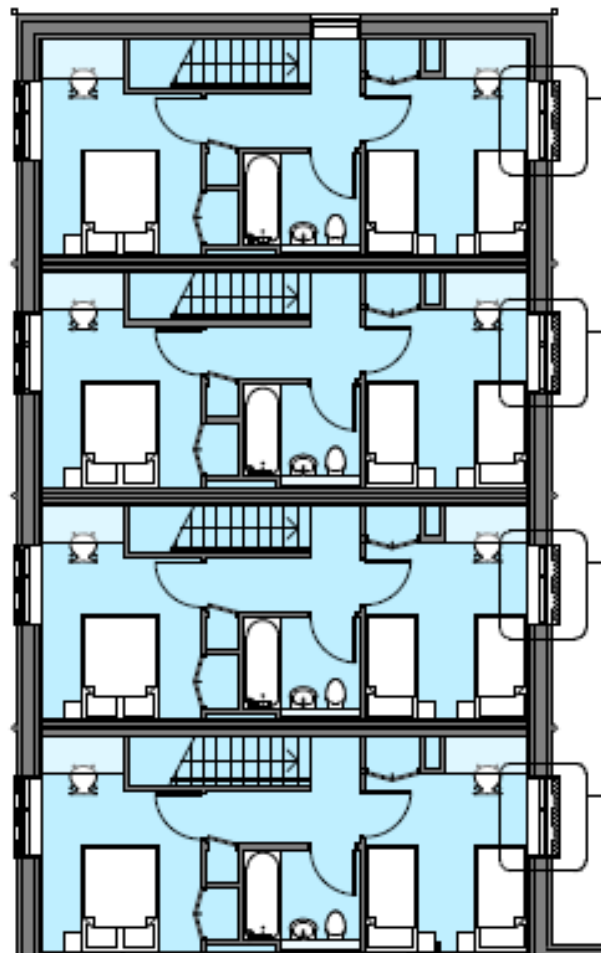
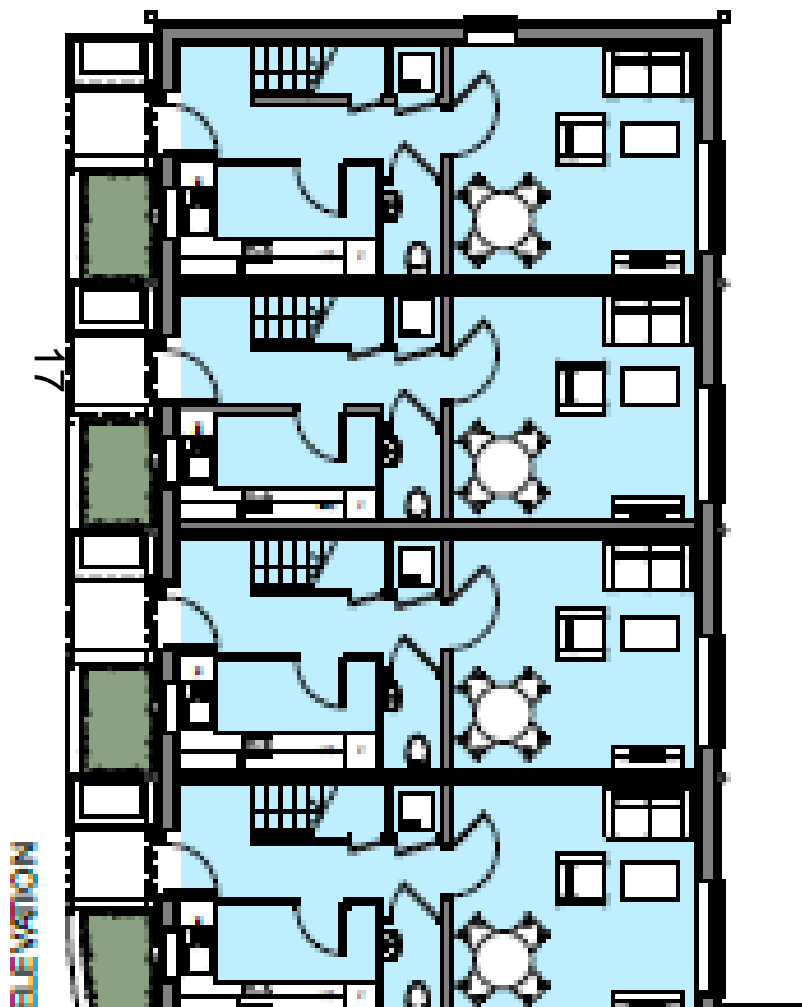




# Typical North South Elevation



# Typical Floor Plan 2 bed



[www.oxford.gov.uk](http://www.oxford.gov.uk)



# Proposed Section East – West



18



# Section East West from Rivermead Road

[www.oxford.gov.uk](http://www.oxford.gov.uk)





# Section through site North-South



20





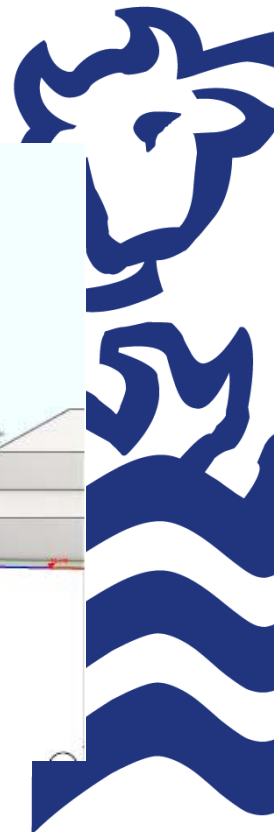
# Section through North South



# Proposed Section Court A



22



# Proposed Court A fourved window



**1** Elevation East  
1:200



**3** Elevation West  
1:200

# Proposed Landscape Court A



24

[www.oxford.gov.uk](http://www.oxford.gov.uk)



# Proposed Landscape Court B

25



[www.oxford.gov.uk](http://www.oxford.gov.uk)





# Proposed Landscape Court C

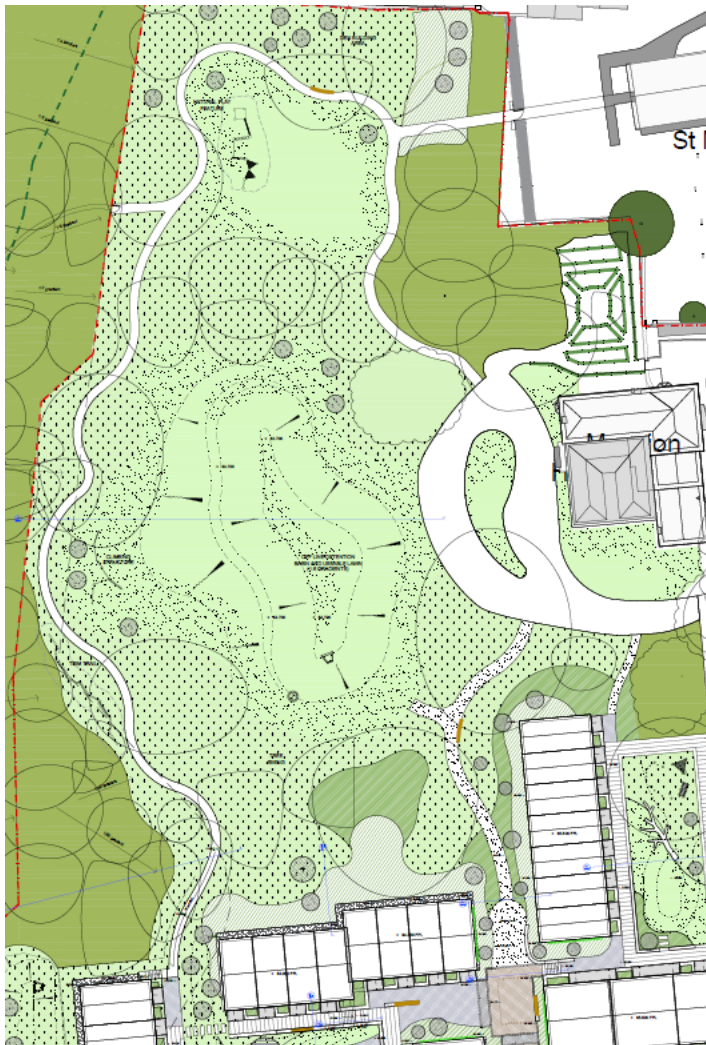


26

[www.oxford.gov.uk](http://www.oxford.gov.uk)



# Wider Landscape Plan



# Proposed Visualisation from Rivermead Road



[www.oxford.gov.uk](http://www.oxford.gov.uk)





# Proposed Visualisation from within Court C

29



[www.oxford.gov.uk](http://www.oxford.gov.uk)



This page is intentionally left blank