

East Area Planning Committee Presentation

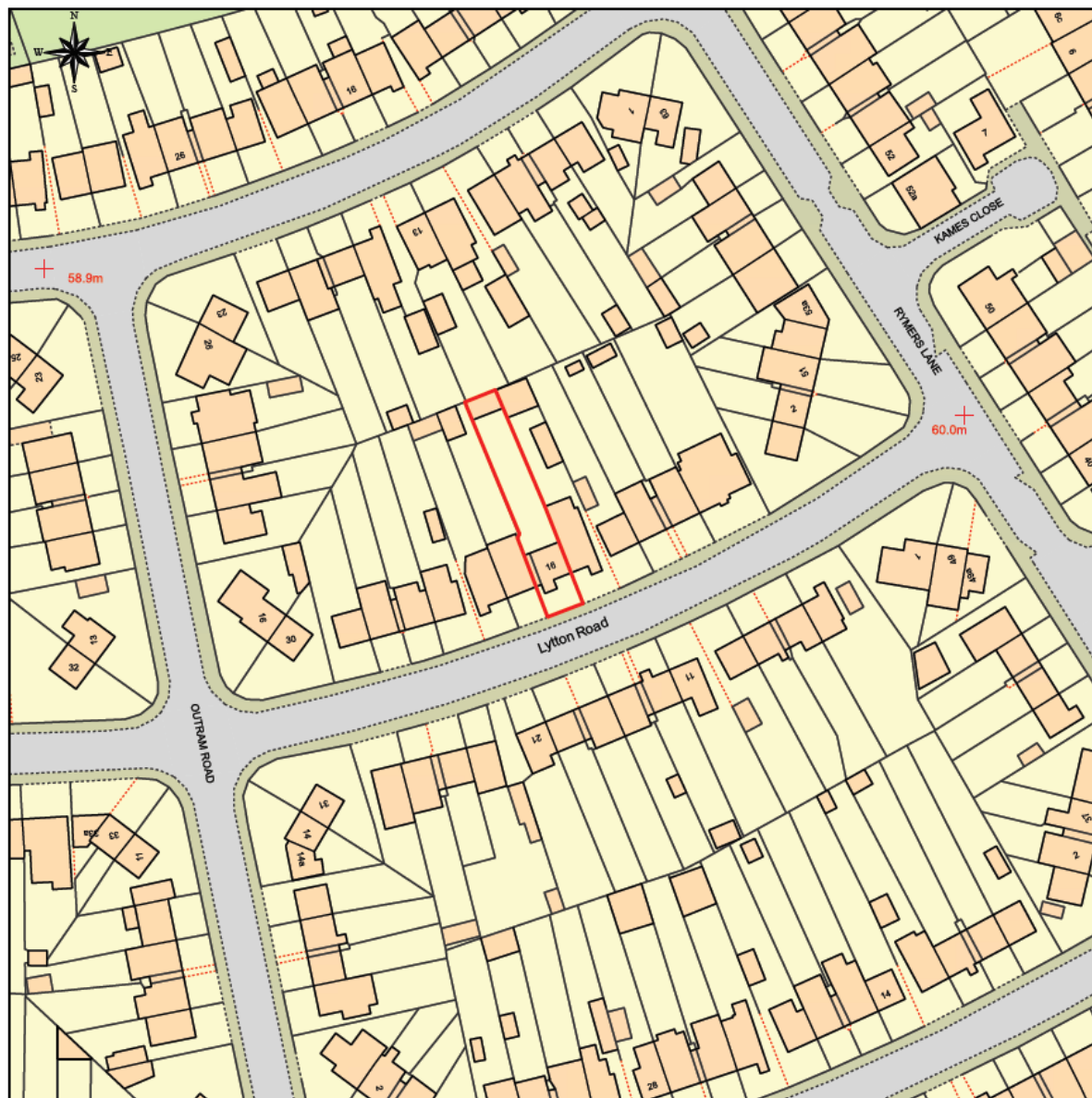
Reference Number: 20/03072/FUL

Site Address:
16 Lytton Road
Oxford
OX4 3PB

www.oxford.gov.uk



Location Plan



78

www.oxford.gov.uk



View of Rear of Site

79



www.oxford.gov.uk



View towards Number 14



08

www.oxford.gov.uk



**OXFORD
CITY
COUNCIL**



View towards Number 18



81

www.oxford.gov.uk



**OXFORD
CITY
COUNCIL**



Front of site

82

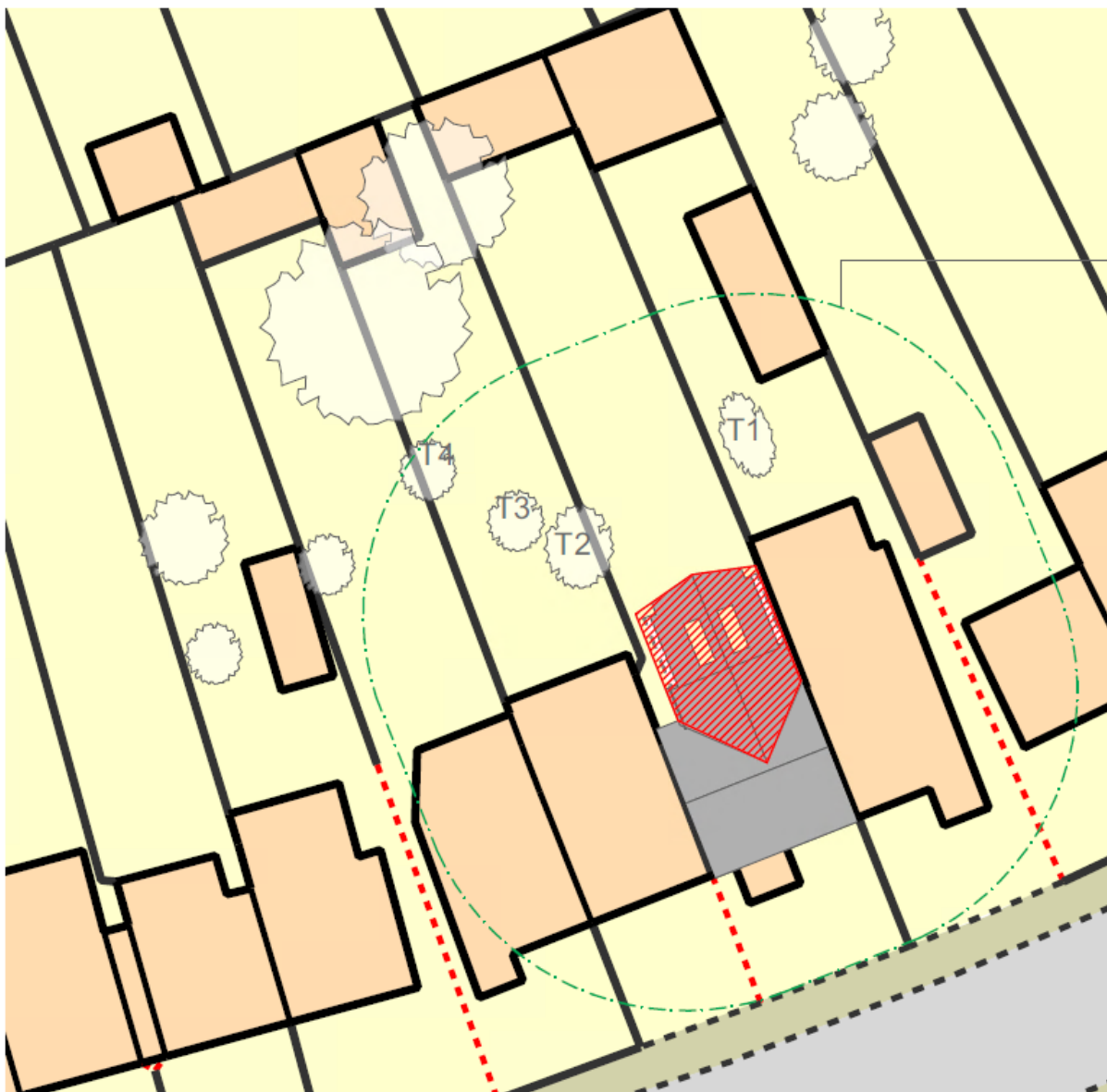


Image from Google Street View

www.oxford.gov.uk



Proposed Block Plan



83

www.oxford.gov.uk

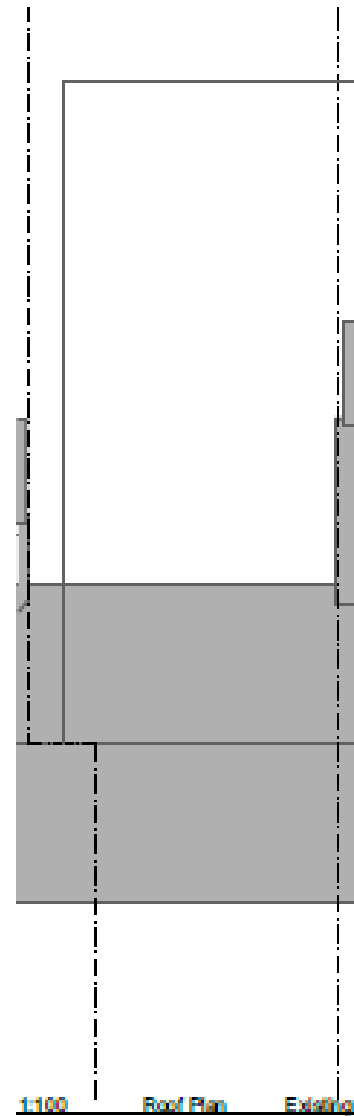
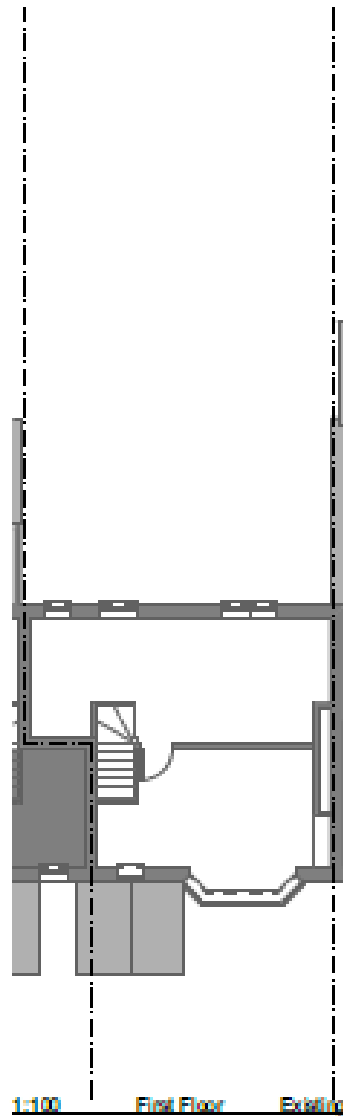
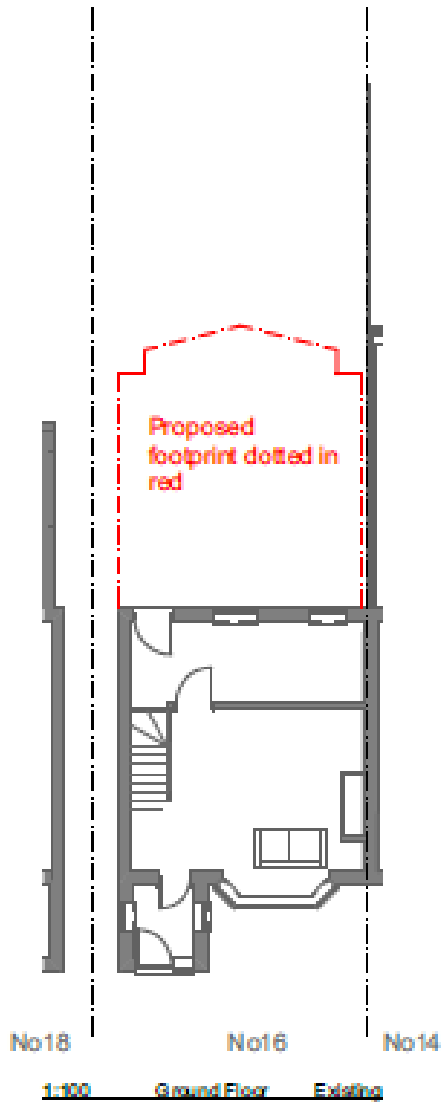


**OXFORD
CITY
COUNCIL**



Existing plans

84

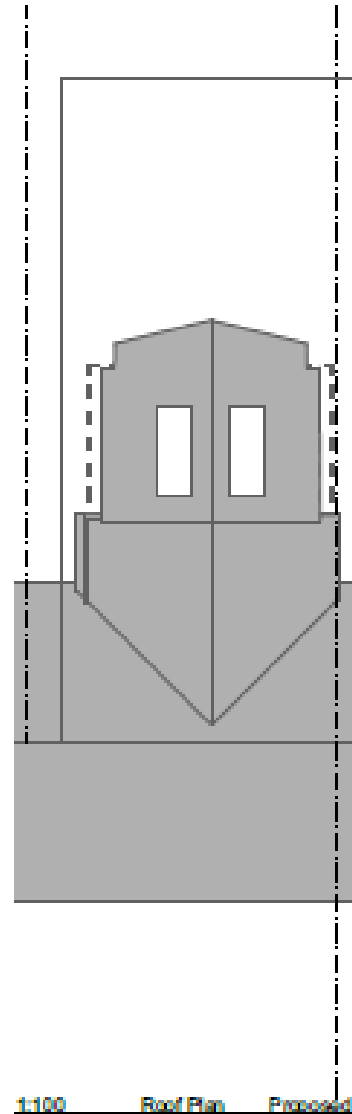
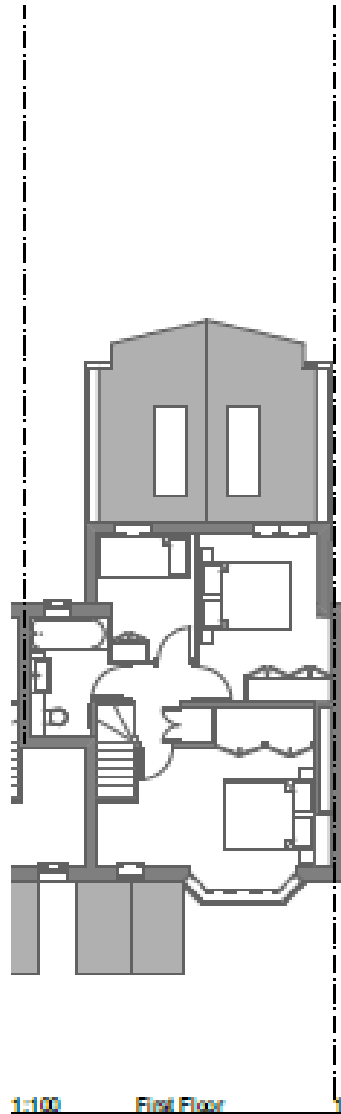
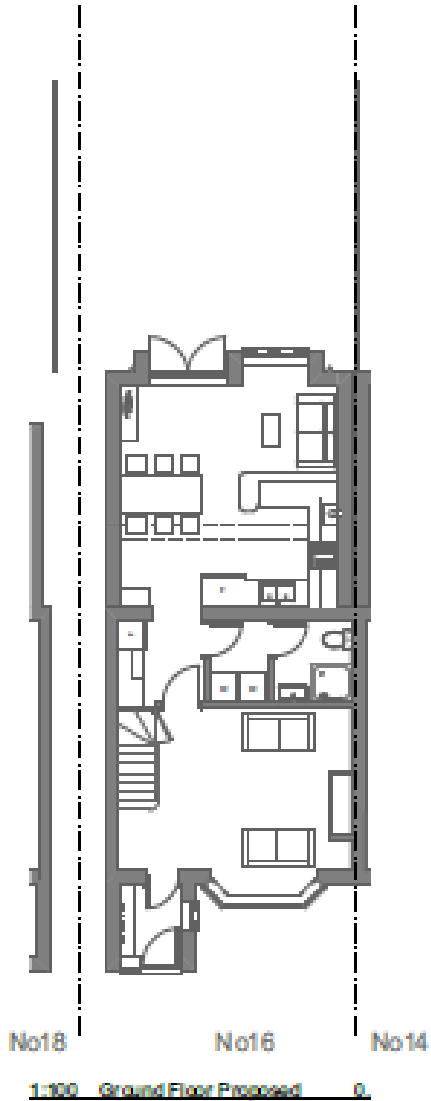


Existing Elevations



Proposed Plans

98



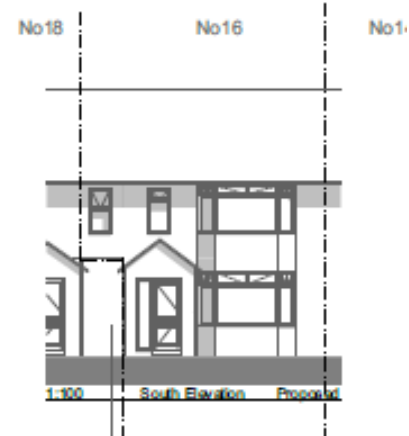
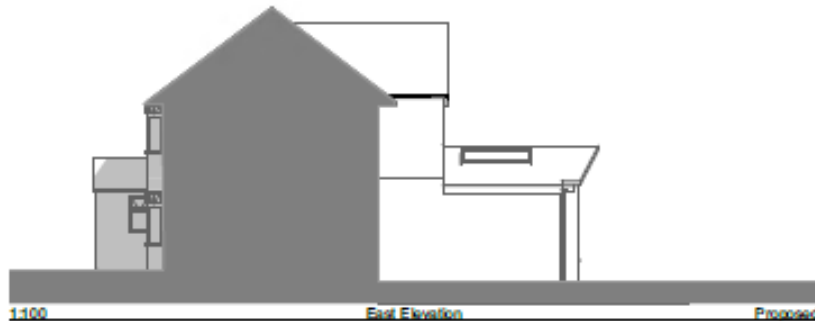
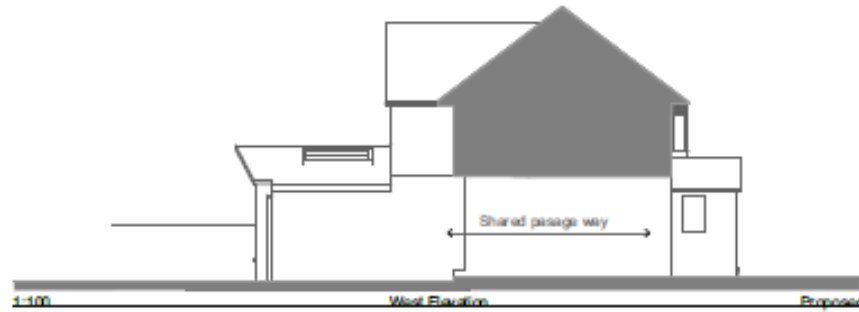
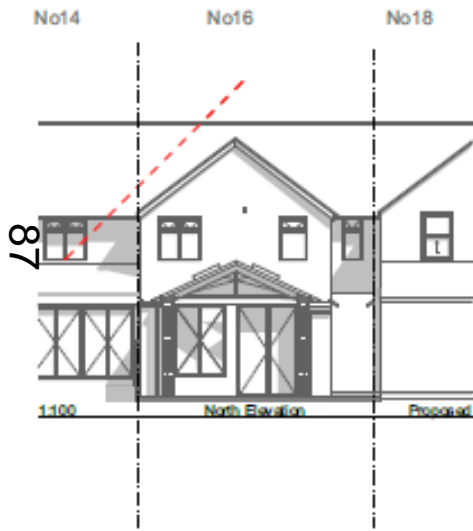
www.oxford.gov.uk



OXFORD
CITY
COUNCIL



Proposed Elevations



Proposed Rear View

88



View of the proposed rear elevation

