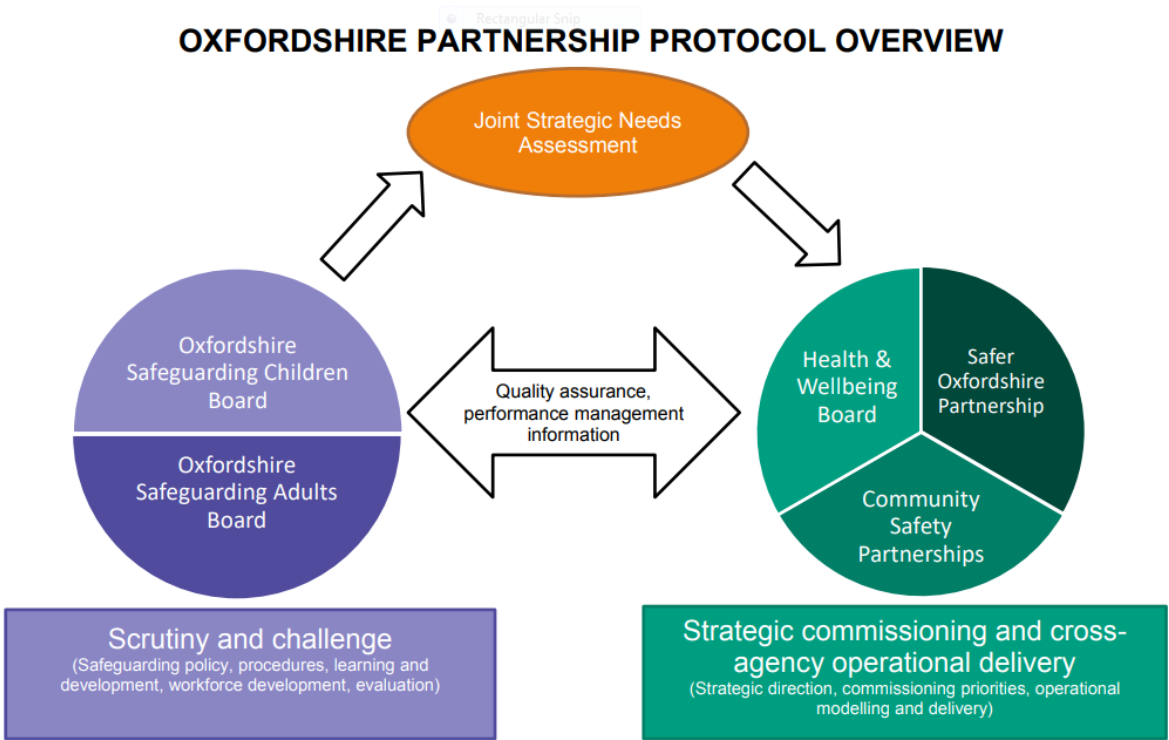


Appendix 2

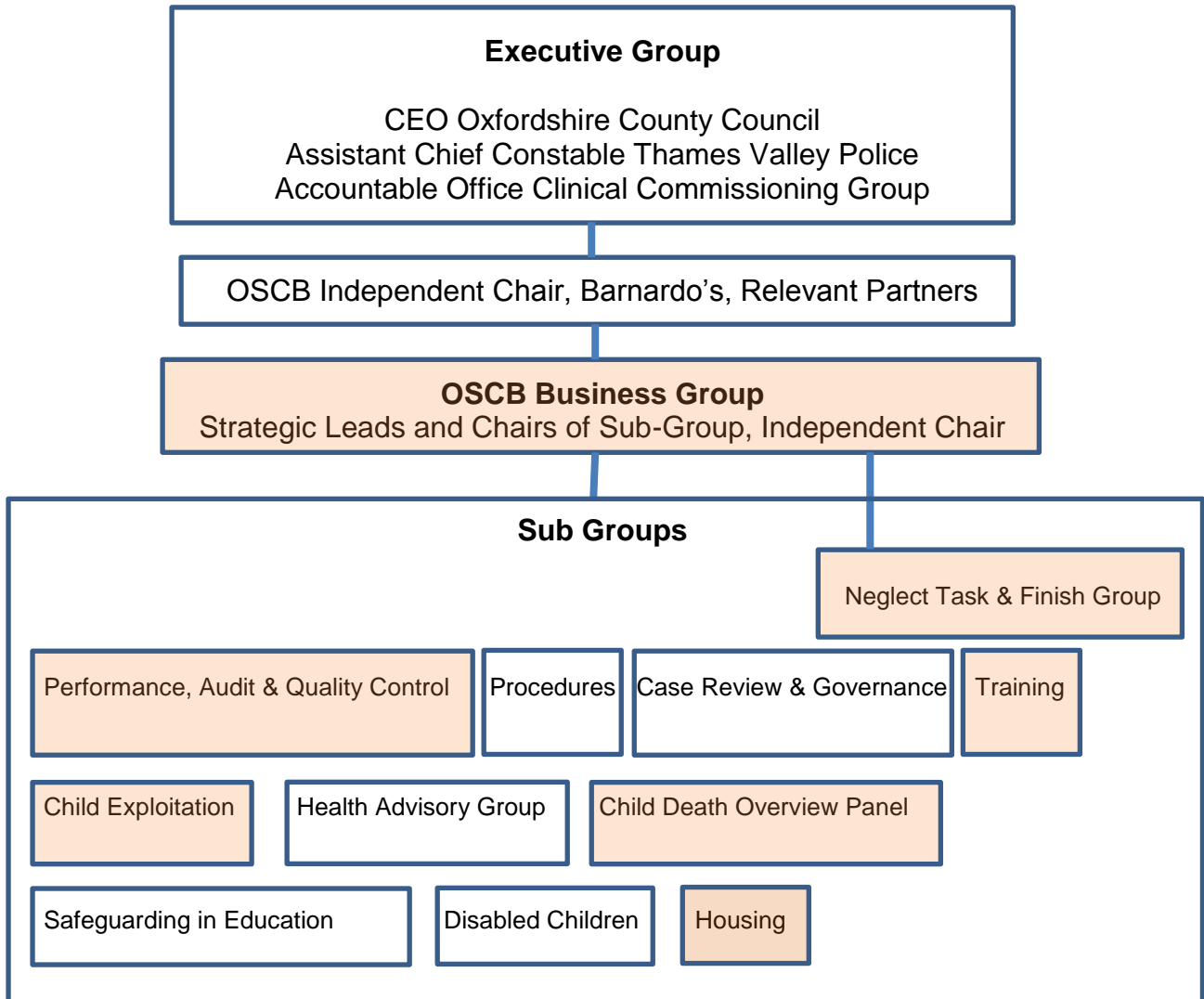
Oxfordshire Partnership Protocol Overview and Safeguarding Board involvement

The diagram below shows where the safeguarding boards fit within the JSNA and key partnerships.



Oxfordshire Multi-Agency Child Safeguarding Arrangement

Draft Structure chart – highlighted areas show Oxford City representation



Appendix 2

Oxfordshire Adult Safeguarding Board

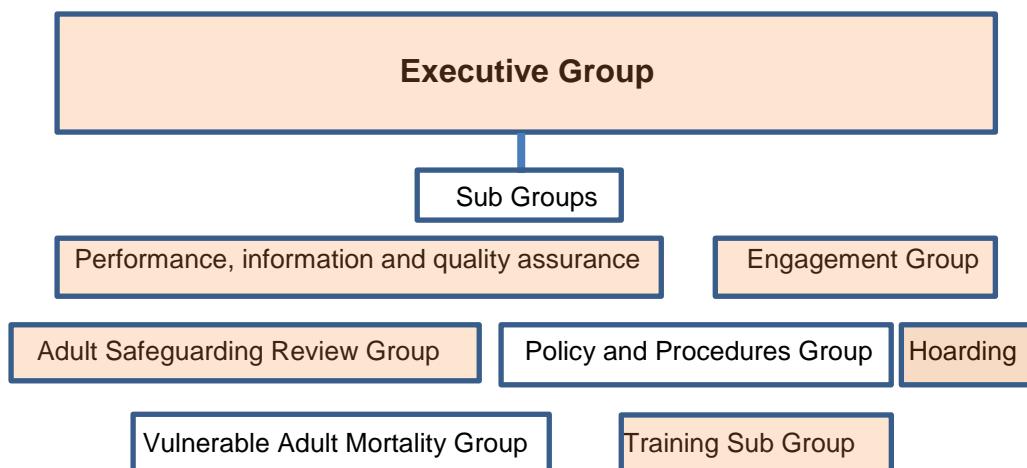
The three key members on the Oxfordshire Safeguarding Adults Board are:

- The Director of Adult Social Care, Oxfordshire County Council
- The Director of Quality, Oxfordshire Clinical Commissioning Group
- The Detective Chief Inspector, Protecting Vulnerable People, Thames Valley Police

There are senior representatives on the board from the following organisations:



Oxfordshire Adult Safeguard Board structure and sub-group participation



Appendix 2