

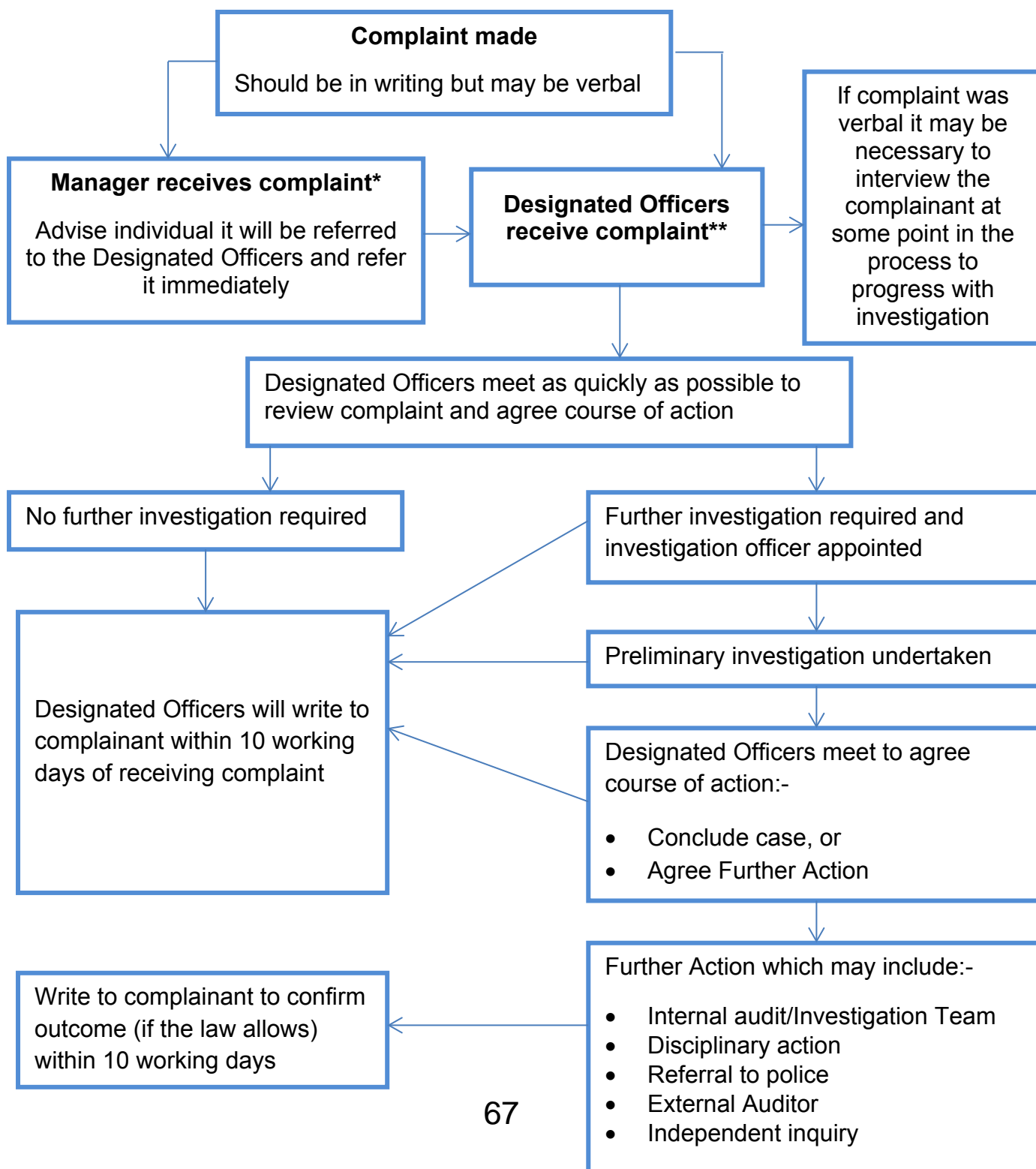
How to respond to a Whistleblowing Concern – Flow Chart

This is an overview only and should be used in conjunction with the Whistleblowing Policy.

Designated Officers are Head of Business Improvement, Head of Financial Services and Monitoring Officer.

* If there is any doubt as to whether the complaint could be considered to be whistleblowing the manager must refer it as such.

** Unless the complaint is about one or more of the Designated Officers when it should be referred to an Executive Director or the Chief Executive.



This page is intentionally left blank