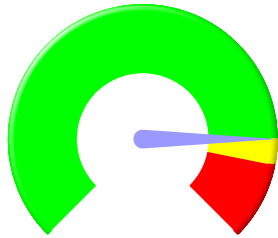


# Appendix F

## Integrated Report- Assistant Chief Executive Q2 2015/16

### Financial Performance

Assistant Chief Executive



Budget: £858,476  
 Forecast: £858,476  
 Variance: £0  
 Prev Qtr: £858,476  
 Movement: £0

#### Performance Summary

Service	No Data	Red	Amber	Green
Assistant Chief Executive	0 (0%)	0 (0%)	1 (17%)	5 (83%)
<b>Total</b>	<b>0 (0%)</b>	<b>0 (0%)</b>	<b>1 (17%)</b>	<b>5 (83%)</b>

#### Risk Summary

Service	No Data	Red	Amber	Green
Assistant Chief Executive	0 (0%)	0 (0%)	0 (0%)	3 (100%)
<b>Total</b>	<b>0 (0%)</b>	<b>0 (0%)</b>	<b>0 (0%)</b>	<b>3 (100%)</b>

	No Data	Red	Amber	Green
Previous Quarter	0 (0%)	0 (0%)	0 (0%)	6 (100%)

	No Data	Red	Amber	Green
Previous Quarter	0 (0%)	0 (0%)	0 (0%)	3 (50%)

#### Direction of Travel

Service	No Data	Declining	No Change	Improving
Assistant Chief Executive	0 (0%)	0 (0%)	3 (50%)	3 (50%)
<b>Grand Total</b>	<b>0 (0%)</b>	<b>0 (0%)</b>	<b>3 (50%)</b>	<b>3 (50%)</b>

#### Direction of Travel

Service	No Data	Declining	No change	Improving
Assistant Chief Executive	0 (0%)	0 (0%)	3 (100%)	0 (0%)
<b>Total</b>	<b>0 (0%)</b>	<b>0 (0%)</b>	<b>3 (100%)</b>	<b>0 (0%)</b>

This page is intentionally left blank