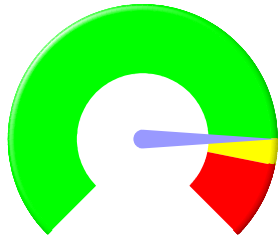


Appendix F

Integrated Report- Assistant Chief Executive Q1 2015/16

Financial Performance

Assistant Chief Executive



Budget: £839,236
 Forecast: £839,236
 Variance: £0

Performance Summary

Service	No Data	Red	Amber	Green
Assistant Chief Executive	0 (0%)	0 (0%)	0 (0%)	6 (100%)
Total	0 (0%)	0 (0%)	0 (0%)	6 (100%)

Risk Summary

Service	No Data	Red	Amber	Green
Assistant Chief Executive	0 (0%)	0 (0%)	0 (0%)	3 (100%)
Total	0 (0%)	0 (0%)	0 (0%)	3 (100%)

	No Data	Red	Amber	Green
Previous Quarter	0 (0%)	1 (17%)	0 (0%)	5 (83%)

	No Data	Red	Amber	Green
Previous Quarter	0 (0%)	0 (0%)	3 (50%)	0 (0%)

Direction of Travel

Service	No Data	Declining	No Change	Improving
Assistant Chief Executive	0 (0%)	3 (50%)	3 (50%)	0 (0%)
Grand Total	0 (0%)	3 (50%)	3 (50%)	0 (0%)

Direction of Travel

Service	No Data	Declining	No change	Improving
Assistant Chief Executive	3 (100%)	0 (0%)	0 (0%)	0 (0%)
Total	3 (100%)	0 (0%)	0 (0%)	0 (0%)

This page is intentionally left blank