

# Planning - Oxford City Planning Committee

On **Tuesday 21 June 2022** At **6.00 pm**

www.oxford.gov.uk



## Presentations

### Contents

**Note: Planning Committee presentations contain mostly pictures, maps and plans. These are not in an accessible format.**

To see full details of the application including full plans, representations, public comments and supplementary information, please [click here](#) and enter the relevant Planning Reference number in the search box

3.	<b>21/01261/FUL: St Hilda's College, Cowley Place, Oxford, OX4 1DY</b>	3 - 66
4.	<b>22/00679/FUL: Headington Hill Campus, Oxford Brookes University, Headington Hill, Oxford OX3 0BT</b>	67 - 78
5.	<b>21/03622/VAR: Helena Kennedy Centre, Headington Hill, Headington, Oxford OX3 0BT</b>	79 - 94
6.	<b>21/03241/FUL: Julianstow Cottage, 10 Harberton Mead, Oxford, OX3 0DB</b>	95 - 110

The agenda, reports and any additional supplements can be found together with this supplement on the committee meeting webpage.

*View or subscribe to updates for agendas, reports and minutes at [mycouncil.oxford.gov.uk](https://mycouncil.oxford.gov.uk).  
All public papers are available from the calendar link to this meeting once published*

*Oxford City Council, Town Hall, St Aldate's Oxford OX1 1BX*

This page is intentionally left blank

# Oxford City Planning Committee Presentation

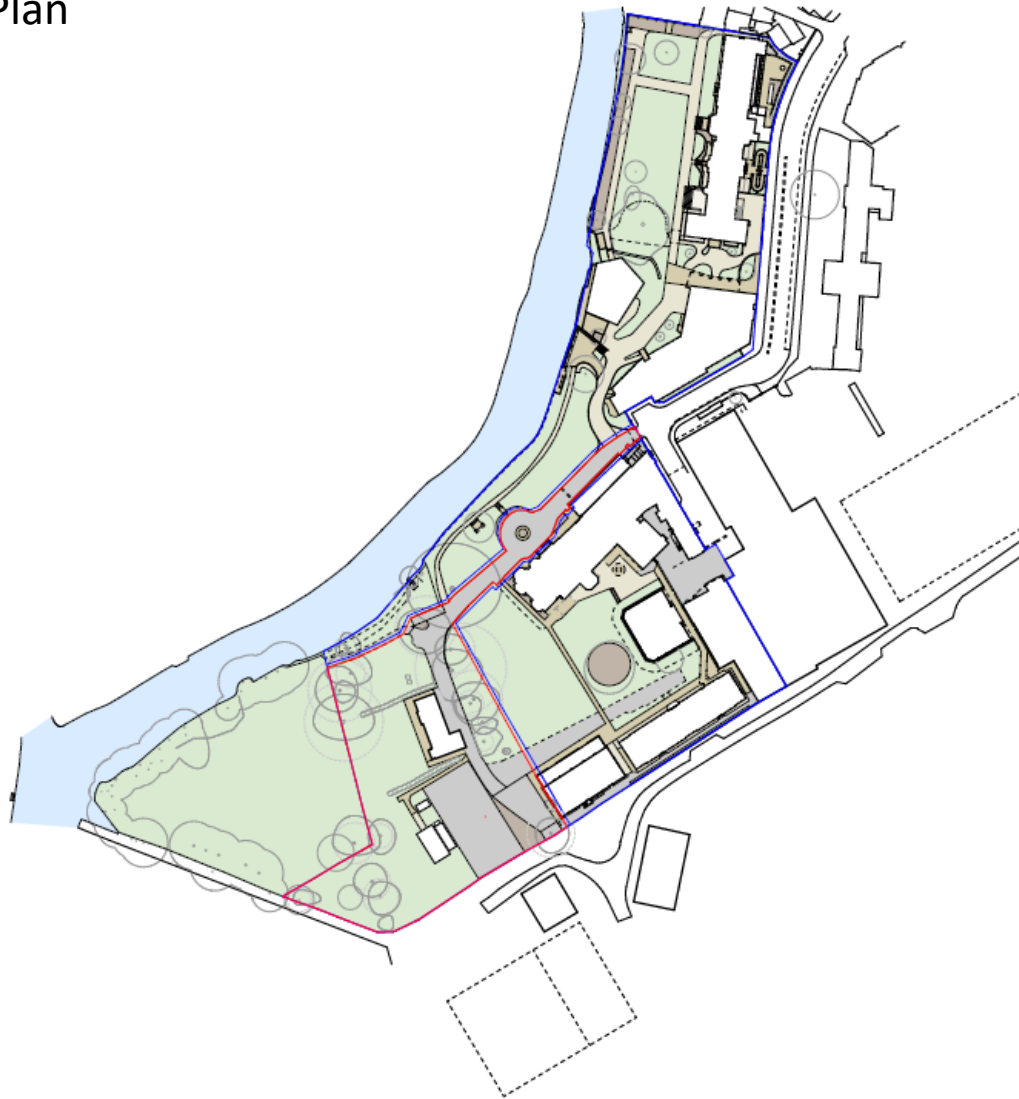
**Reference Number: 21/01261/FUL**  
**Site Address: St Hilda's College,**  
**Cowley Place**

**Plans and elevations**

[www.oxford.gov.uk](http://www.oxford.gov.uk)

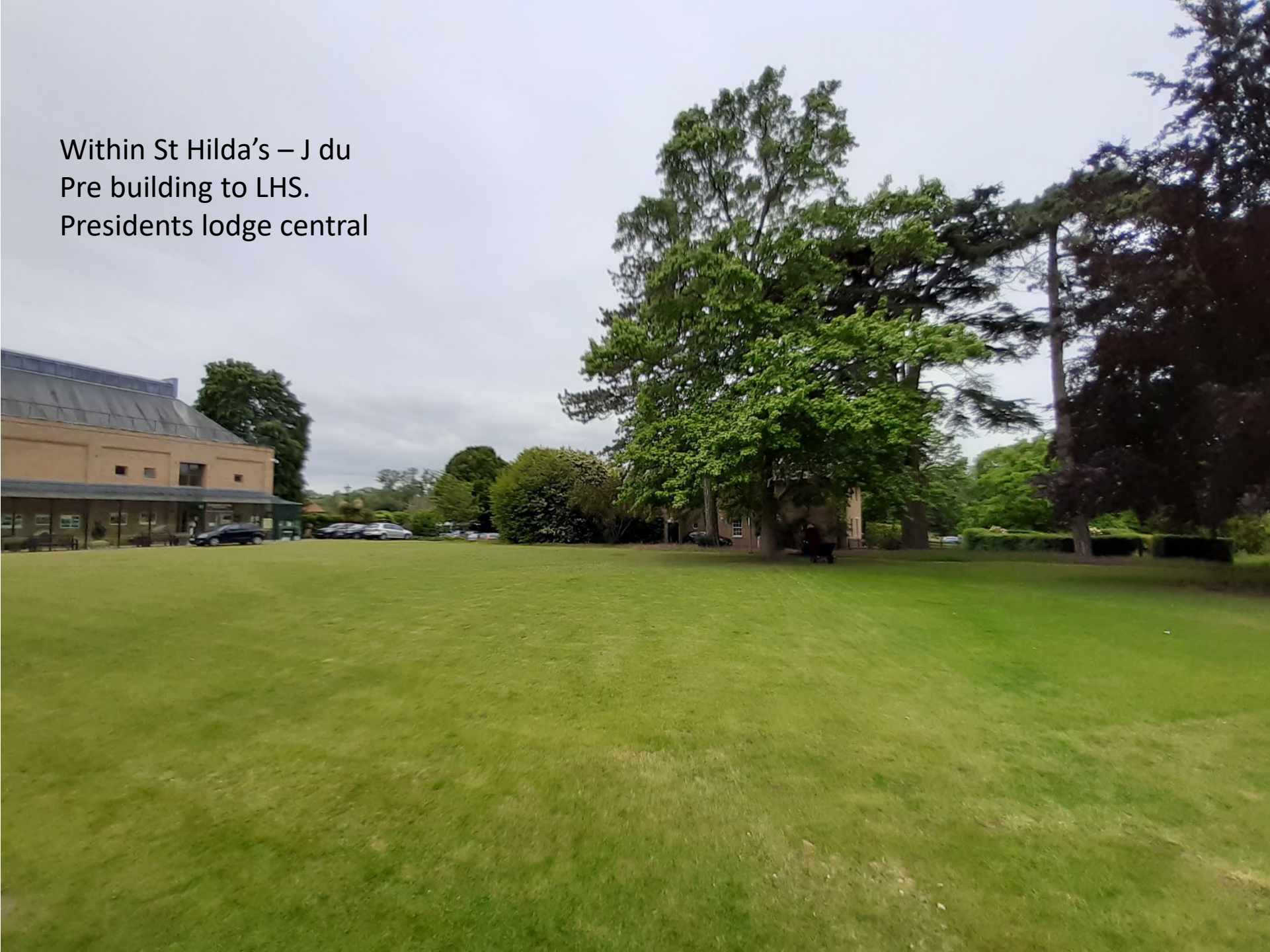


# Existing Site Plan





Within St Hilda's – J du  
Pre building to LHS.  
Presidents lodge central





Presidents Lodge to LHS





Existing buildings







President's Lodge





President's Lodge





Rose Garden





View of River Cherwell beside Rose Garden





President's Lodge from the Meadow





Temporary Buildign LHS and View to  
tennis Courts and Recreational Ground  
beyond





View of adjacent Meadow





Exiting access track to Meadow





St Hilda's from Christ Church Meadows





St Hilda's from Christ Church Meadows





St Hilda's from Christ Church Meadows





St Hilda's from Ferry Bridge in  
Christ Church Meadows



CGI visualisations within the College (DAS extract)

Setting : Lawn view



View from Lawn looking south-west.

Key:

- |                                   |                              |
|-----------------------------------|------------------------------|
| 1. Proposed: Villa Building       | 5. Existing: Garden Building |
| 2. Proposed: Meadow Building      | 6. Existing: South Building  |
| 3. Proposed: Principal's Lodgings | 7. Existing: College Lawn    |
| 4. Existing: JdP Music Building   |                              |



## CGI visualisations within the College (DAS extract)

Setting : *Meadow view*

View from meadow looking north-east.

Key:

1. Proposed: Villa Building
2. Proposed: Meadow Building
3. Proposed: Principal's Lodgings
4. Existing: JdP Music Building
5. Existing: Wolfson Building
6. Proposed: External amenity space
7. Existing: Fritillary meadow accessed via gates within estate railing



CGI visualisations within the College (DAS extract)

Setting : Meadow view

View from meadow looking north.

- Key:
- 1. Proposed: Villa Building
  - 2. Proposed: Meadow Building
  - 3. Proposed: External amenity space with tiered seating
  - 4. Existing: Fritillary meadow
  - 5. Existing: Garden Building
  - 6. Proposed: Planting to Christ Church boundary





## CGI visualisations within the College (DAS extract)

Setting : View from Corner of South Building



View from South Building looking south.

Key:

- 1. Proposed: Villa Building
- 2. Proposed: Meadow Building
- 3. Proposed: External amenity space with tiered seating
- 4. Existing: JdP Music Building
- 5. Existing: South Building
- 6. Existing: College Lawn
- 7. Existing: Vehicle access road
- 8. Existing: Hedge for privacy



CGI visualisations within the College (DAS extract)

Setting : *View of Principal's Lodgings*

View from meadow looking east toward Principal's Lodgings.

Key:

- 1. Proposed: Meadow Building
- 2. Proposed: Principal's Lodgings
- 3. Existing: Garden Building
- 4. Existing: Hedge for privacy for Principal's Lodgings
- 5. Existing: Fritillary meadow
- 6. Proposed: Estate railing
- 7. Existing: River Cherwell and planting to bank





## CGI visualisations within the College (DAS extract)

Setting : [Riverside View](#)



View from Magdalen College School playing fields looking south.

Key:

1. Proposed: Meadow Building
2. Proposed: Principal's Lodgings
3. Existing: Garden Building
4. Existing: Hedge for privacy for Principal's Lodgings
5. Existing: Fritillary meadow
6. Proposed: Estate railing
7. Existing: River Cherwell and planting to bank



Verified View – Jubilee Bridge (winter)

Top: existing, Bottom: Proposed

26





Verified View – Jubilee Bridge (summer)

Top: existing, Bottom: Proposed

27





# Verified View – Ferry Walk (winter)

Top: existing, Bottom: Proposed



Viewpoint D: View from Ferry Walk, Christchurch Meadow



Verified View – Ferry Walk (summer)

Top: existing, Bottom: Proposed





Verified View – Botanic Gardens (winter)

Top: existing, Bottom: Proposed

30



LUC	OS reference:	451990 E 205954 N	Vertical field of view:	14.2°	Camera:	Nikon D750	Distance to development:	0.23km	Data Sources: Topography data used to inform 3D model: 1m National LIDAR programme DTM, Environment Agency Development model provided in Sketchup format by Design Engine Architects on 17/09/2020 Photomontage updates informed by Design and Access Statement Revision R6.
	AOD:	56.1m	Principal distance:	522 mm	Lens:	Nikkor AF 50mm f/1.8D			
	Direction of view:	155°	Paper size:	841 x 297 mm (half A1)	Camera height:	1.5 m (above AOD)			
	Horizontal field of view:	90° (cylindrical projection)	Correct printed image size:	820 x 280 mm	Date and time:	12/03/2020 16:30			

Viewpoint C: View from Oxford Botanic Garden



# Verified View – Botanic Gardens (summer)

Top: existing, Bottom: Proposed



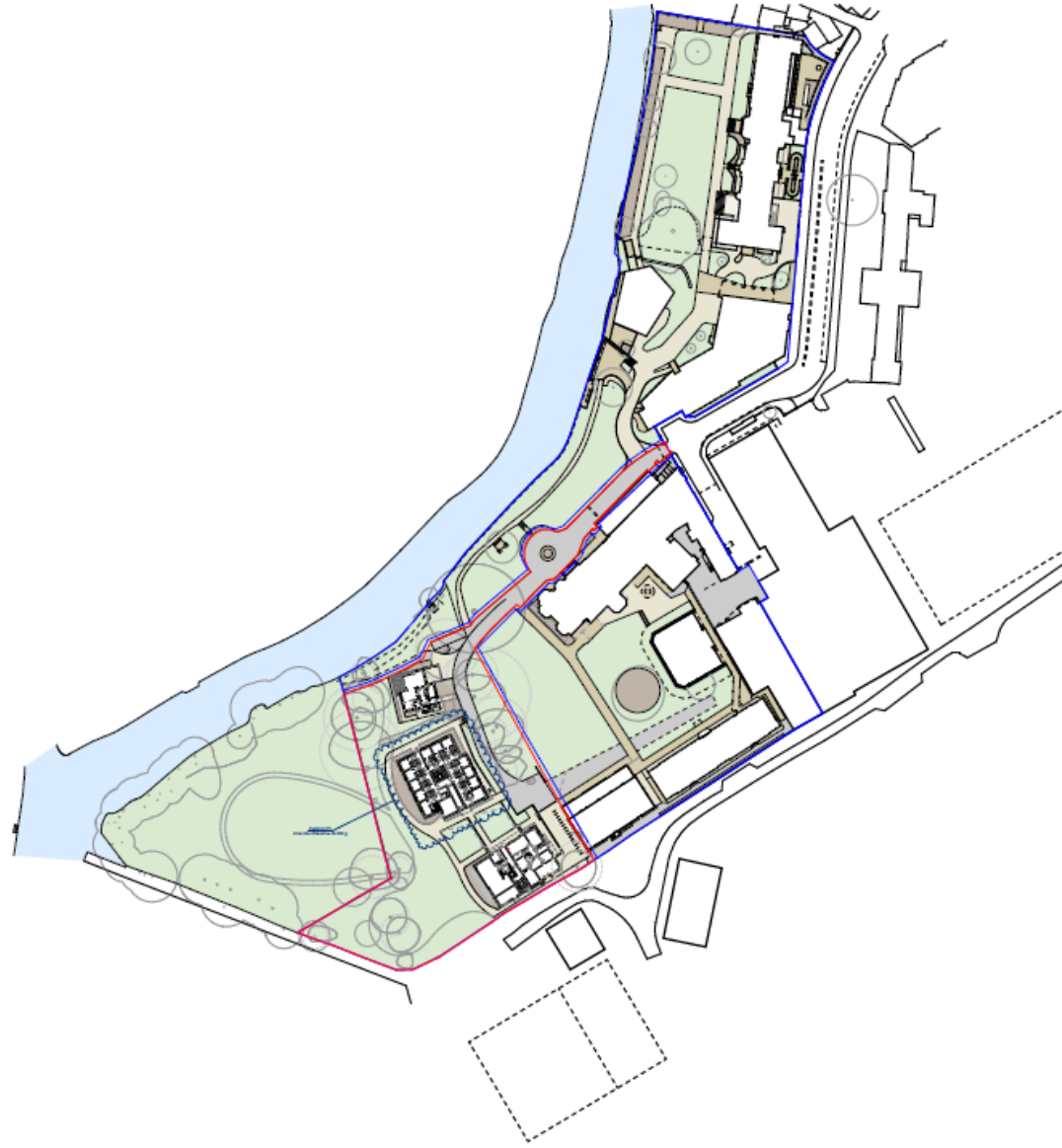


# Christ Church Recreational Ground (winter only)

Top: existing, Bottom: Proposed



33



1. <b>Product Name:</b> <span style="border-bottom: 1px solid black; display: inline-block; width: 150px;"></span>	
2. <b>Product Code:</b> <span style="border-bottom: 1px solid black; display: inline-block; width: 150px;"></span>	
3. <b>Product Description:</b> <span style="border-bottom: 1px solid black; display: inline-block; width: 150px;"></span>	
4. <b>Product Features:</b> <span style="border-bottom: 1px solid black; display: inline-block; width: 150px;"></span>	
5. <b>Product Specifications:</b> <span style="border-bottom: 1px solid black; display: inline-block; width: 150px;"></span>	
6. <b>Product Dimensions:</b> <span style="border-bottom: 1px solid black; display: inline-block; width: 150px;"></span>	
7. <b>Product Weight:</b> <span style="border-bottom: 1px solid black; display: inline-block; width: 150px;"></span>	
8. <b>Product Material:</b> <span style="border-bottom: 1px solid black; display: inline-block; width: 150px;"></span>	
9. <b>Product Color:</b> <span style="border-bottom: 1px solid black; display: inline-block; width: 150px;"></span>	
10. <b>Product Price:</b> <span style="border-bottom: 1px solid black; display: inline-block; width: 150px;"></span>	
11. <b>Product Availability:</b> <span style="border-bottom: 1px solid black; display: inline-block; width: 150px;"></span>	
12. <b>Product Warranty:</b> <span style="border-bottom: 1px solid black; display: inline-block; width: 150px;"></span>	
13. <b>Product Notes:</b> <span style="border-bottom: 1px solid black; display: inline-block; width: 150px;"></span>	
14. <b>Product Images:</b> <span style="border-bottom: 1px solid black; display: inline-block; width: 150px;"></span>	
15. <b>Product Reviews:</b> <span style="border-bottom: 1px solid black; display: inline-block; width: 150px;"></span>	
16. <b>Product Questions:</b> <span style="border-bottom: 1px solid black; display: inline-block; width: 150px;"></span>	
17. <b>Product Answers:</b> <span style="border-bottom: 1px solid black; display: inline-block; width: 150px;"></span>	
18. <b>Product Comments:</b> <span style="border-bottom: 1px solid black; display: inline-block; width: 150px;"></span>	
19. <b>Product Feedback:</b> <span style="border-bottom: 1px solid black; display: inline-block; width: 150px;"></span>	
20. <b>Product Suggestions:</b> <span style="border-bottom: 1px solid black; display: inline-block; width: 150px;"></span>	
21. <b>Product Complaints:</b> <span style="border-bottom: 1px solid black; display: inline-block; width: 150px;"></span>	
22. <b>Product Praises:</b> <span style="border-bottom: 1px solid black; display: inline-block; width: 150px;"></span>	
23. <b>Product Criticisms:</b> <span style="border-bottom: 1px solid black; display: inline-block; width: 150px;"></span>	
24. <b>Product Recommendations:</b> <span style="border-bottom: 1px solid black; display: inline-block; width: 150px;"></span>	
25. <b>Product Dislikes:</b> <span style="border-bottom: 1px solid black; display: inline-block; width: 150px;"></span>	
26. <b>Product Likes:</b> <span style="border-bottom: 1px solid black; display: inline-block; width: 150px;"></span>	
27. <b>Product Dislikes:</b> <span style="border-bottom: 1px solid black; display: inline-block; width: 150px;"></span>	
28. <b>Product Likes:</b> <span style="border-bottom: 1px solid black; display: inline-block; width: 150px;"></span>	
29. <b>Product Dislikes:</b> <span style="border-bottom: 1px solid black; display: inline-block; width: 150px;"></span>	
30. <b>Product Likes:</b> <span style="border-bottom: 1px solid black; display: inline-block; width: 150px;"></span>	
31. <b>Product Dislikes:</b> <span style="border-bottom: 1px solid black; display: inline-block; width: 150px;"></span>	
32. <b>Product Likes:</b> <span style="border-bottom: 1px solid black; display: inline-block; width: 150px;"></span>	
33. <b>Product Dislikes:</b> <span style="border-bottom: 1px solid black; display: inline-block; width: 150px;"></span>	
34. <b>Product Likes:</b> <span style="border-bottom: 1px solid black; display: inline-block; width: 150px;"></span>	
35. <b>Product Dislikes:</b> <span style="border-bottom: 1px solid black; display: inline-block; width: 150px;"></span>	
36. <b>Product Likes:</b> <span style="border-bottom: 1px solid black; display: inline-block; width: 150px;"></span>	
37. <b>Product Dislikes:</b> <span style="border-bottom: 1px solid black; display: inline-block; width: 150px;"></span>	
38. <b>Product Likes:</b> <span style="border-bottom: 1px solid black; display: inline-block; width: 150px;"></span>	
39. <b>Product Dislikes:</b> <span style="border-bottom: 1px solid black; display: inline-block; width: 150px;"></span>	
40. <b>Product Likes:</b> <span style="border-bottom: 1px solid black; display: inline-block; width: 150px;"></span>	
41. <b>Product Dislikes:</b> <span style="border-bottom: 1px solid black; display: inline-block; width: 150px;"></span>	
42. <b>Product Likes:</b> <span style="border-bottom: 1px solid black; display: inline-block; width: 150px;"></span>	
43. <b>Product Dislikes:</b> <span style="border-bottom: 1px solid black; display: inline-block; width: 150px;"></span>	
44. <b>Product Likes:</b> <span style="border-bottom: 1px solid black; display: inline-block; width: 150px;"></span>	
45. <b>Product Dislikes:</b> <span style="border-bottom: 1px solid black; display: inline-block; width: 150px;"></span>	
46. <b>Product Likes:</b> <span style="border-bottom: 1px solid black; display: inline-block; width: 150px;"></span>	
47. <b>Product Dislikes:</b> <span style="border-bottom: 1px solid black; display: inline-block; width: 150px;"></span>	
48. <b>Product Likes:</b> <span style="border-bottom: 1px solid black; display: inline-block; width: 150px;"></span>	
49. <b>Product Dislikes:</b> <span style="border-bottom: 1px solid black; display: inline-block; width: 150px;"></span>	
50. <b>Product Likes:</b> <span style="border-bottom: 1px solid black; display: inline-block; width: 150px;"></span>	
51. <b>Product Dislikes:</b> <span style="border-bottom: 1px solid black; display: inline-block; width: 150px;"></span>	
52. <b>Product Likes:</b> <span style="border-bottom: 1px solid black; display: inline-block; width: 150px;"></span>	
53. <b>Product Dislikes:</b> <span style="border-bottom: 1px solid black; display: inline-block; width: 150px;"></span>	
54. <b>Product Likes:</b> <span style="border-bottom: 1px solid black; display: inline-block; width: 150px;"></span>	
55. <b>Product Dislikes:</b> <span style="border-bottom: 1px solid black; display: inline-block; width: 150px;"></span>	
56. <b>Product Likes:</b> <span style="border-bottom: 1px solid black; display: inline-block; width: 150px;"></span>	
57. <b>Product Dislikes:</b> <span style="border-bottom: 1px solid black; display: inline-block; width: 150px;"></span>	
58. <b>Product Likes:</b> <span style="border-bottom: 1px solid black; display: inline-block; width: 150px;"></span>	
59. <b>Product Dislikes:</b> <span style="border-bottom: 1px solid black; display: inline-block; width: 150px;"></span>	
60. <b>Product Likes:</b> <span style="border-bottom: 1px solid black; display: inline-block; width: 150px;"></span>	

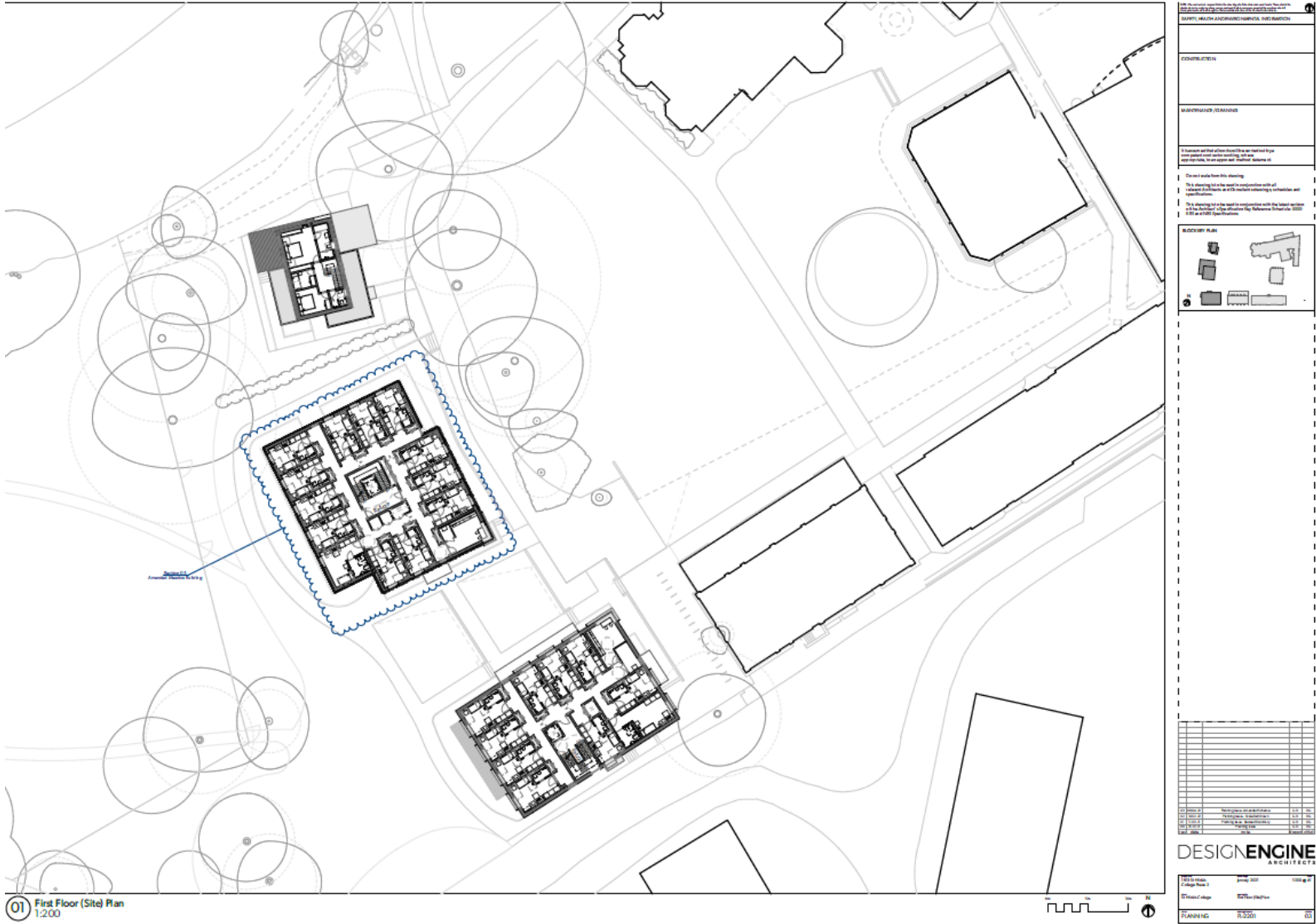
## 34



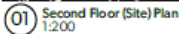


Proposed First Floor (site wide)

35



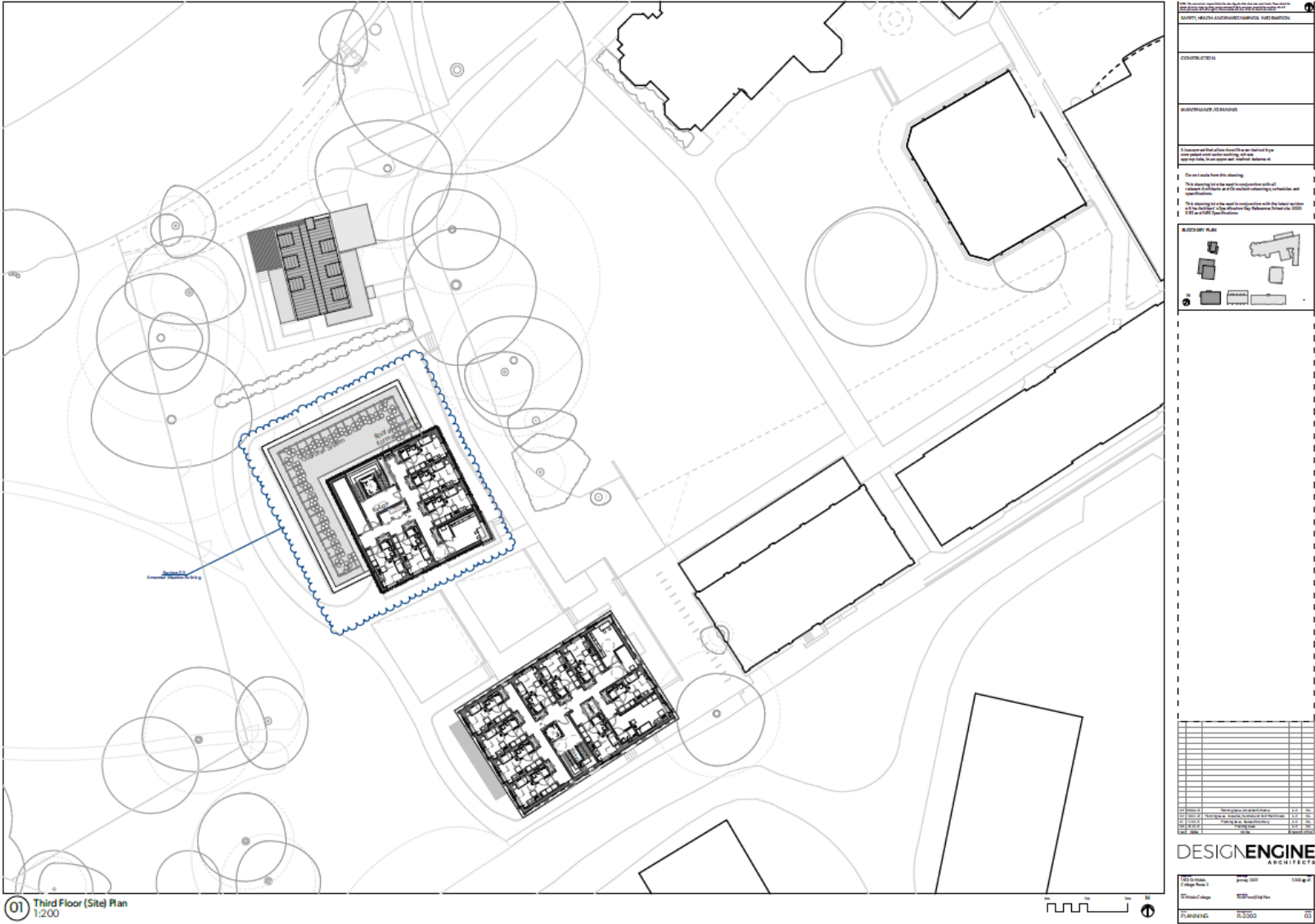
## 36





Proposed Third Floor (site wide)

37

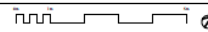
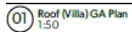








## 39



THIS DOCUMENT CONTAINS NEITHER RECOMMENDATIONS NOR CONCLUSIONS OF THE NATIONAL BUREAU OF STANDARDS. IT IS THE PROPERTY OF THE NATIONAL BUREAU OF STANDARDS AND IS LOANED TO YOUR ORGANIZATION; IT AND ITS CONTENTS ARE NOT TO BE DISTRIBUTED OUTSIDE YOUR ORGANIZATION.

UNCLASSIFIED

UNCLASSIFIED//FOR OFFICIAL USE ONLY

1. **Organization Name**  
 1.1 **Organization Name**  
 1.2 **Address**  
 1.3 **City**  
 1.4 **State**  
 1.5 **Zip**

2. **Product Name**  
 2.1 **Product Name**  
 2.2 **Product Description**  
 2.3 **Product Type**  
 2.4 **Product Category**  
 2.5 **Product Subcategory**  
 2.6 **Product Model**  
 2.7 **Product Version**  
 2.8 **Product Configuration**  
 2.9 **Product Features**  
 2.10 **Product Specifications**  
 2.11 **Product Performance**  
 2.12 **Product Reliability**  
 2.13 **Product Safety**  
 2.14 **Product Security**  
 2.15 **Product Compliance**  
 2.16 **Product Certification**  
 2.17 **Product Approval**  
 2.18 **Product Registration**  
 2.19 **Product Warranty**  
 2.20 **Product Support**  
 2.21 **Product Training**  
 2.22 **Product Documentation**  
 2.23 **Product Maintenance**  
 2.24 **Product Repair**  
 2.25 **Product Replacement**  
 2.26 **Product Disposal**  
 2.27 **Product Recycling**  
 2.28 **Product Reuse**  
 2.29 **Product Refurbishment**  
 2.30 **Product Upgrade**  
 2.31 **Product Upgrade Path**  
 2.32 **Product Upgrade Options**  
 2.33 **Product Upgrade Costs**  
 2.34 **Product Upgrade Risks**  
 2.35 **Product Upgrade Benefits**  
 2.36 **Product Upgrade Timeline**  
 2.37 **Product Upgrade Milestones**  
 2.38 **Product Upgrade Deliverables**  
 2.39 **Product Upgrade Acceptance Criteria**  
 2.40 **Product Upgrade Sign-off**  
 2.41 **Product Upgrade Review**  
 2.42 **Product Upgrade Feedback**  
 2.43 **Product Upgrade Lessons Learned**  
 2.44 **Product Upgrade Best Practices**  
 2.45 **Product Upgrade Case Studies**  
 2.46 **Product Upgrade References**  
 2.47 **Product Upgrade Contacts**  
 2.48 **Product Upgrade History**  
 2.49 **Product Upgrade Status**  
 2.50 **Product Upgrade Comments**

3. **Project Name**  
 3.1 **Project Name**  
 3.2 **Project Description**  
 3.3 **Project Type**  
 3.4 **Project Category**  
 3.5 **Project Subcategory**  
 3.6 **Project Model**  
 3.7 **Project Version**  
 3.8 **Project Configuration**  
 3.9 **Project Features**  
 3.10 **Project Specifications**  
 3.11 **Project Performance**  
 3.12 **Project Reliability**  
 3.13 **Project Safety**  
 3.14 **Project Security**  
 3.15 **Project Compliance**  
 3.16 **Project Certification**  
 3.17 **Project Approval**  
 3.18 **Project Registration**  
 3.19 **Project Warranty**  
 3.20 **Project Support**  
 3.21 **Project Training**  
 3.22 **Project Documentation**  
 3.23 **Project Maintenance**  
 3.24 **Project Repair**  
 3.25 **Project Replacement**  
 3.26 **Project Disposal**  
 3.27 **Project Recycling**  
 3.28 **Project Reuse**  
 3.29 **Project Refurbishment**  
 3.30 **Project Upgrade**  
 3.31 **Project Upgrade Path**  
 3.32 **Project Upgrade Options**  
 3.33 **Project Upgrade Costs**  
 3.34 **Project Upgrade Risks**  
 3.35 **Project Upgrade Benefits**  
 3.36 **Project Upgrade Timeline**  
 3.37 **Project Upgrade Milestones**  
 3.38 **Project Upgrade Deliverables**  
 3.39 **Project Upgrade Acceptance Criteria**  
 3.40 **Project Upgrade Sign-off**  
 3.41 **Project Upgrade Review**  
 3.42 **Project Upgrade Feedback**  
 3.43 **Project Upgrade Lessons Learned**  
 3.44 **Project Upgrade Best Practices**  
 3.45 **Project Upgrade Case Studies**  
 3.46 **Project Upgrade References**  
 3.47 **Project Upgrade Contacts**  
 3.48 **Project Upgrade History**  
 3.49 **Project Upgrade Status**  
 3.50 **Project Upgrade Comments**

4. **Product Name**  
 4.1 **Product Name**  
 4.2 **Product Description**  
 4.3 **Product Type**  
 4.4 **Product Category**  
 4.5 **Product Subcategory**  
 4.6 **Product Model**  
 4.7 **Product Version**  
 4.8 **Product Configuration**  
 4.9 **Product Features**  
 4.10 **Product Specifications**  
 4.11 **Product Performance**  
 4.12 **Product Reliability**  
 4.13 **Product Safety**  
 4.14 **Product Security**  
 4.15 **Product Compliance**  
 4.16 **Product Certification**  
 4.17 **Product Approval**  
 4.18 **Product Registration**  
 4.19 **Product Warranty**  
 4.20 **Product Support**  
 4.21 **Product Training**  
 4.22 **Product Documentation**  
 4.23 **Product Maintenance**  
 4.24 **Product Repair**  
 4.25 **Product Replacement**  
 4.26 **Product Disposal**  
 4.27 **Product Recycling**  
 4.28 **Product Reuse**  
 4.29 **Product Refurbishment**  
 4.30 **Product Upgrade**  
 4.31 **Product Upgrade Path**  
 4.32 **Product Upgrade Options**  
 4.33 **Product Upgrade Costs**  
 4.34 **Product Upgrade Risks**  
 4.35 **Product Upgrade Benefits**  
 4.36 **Product Upgrade Timeline**  
 4.37 **Product Upgrade Milestones**  
 4.38 **Product Upgrade Deliverables**  
 4.39 **Product Upgrade Acceptance Criteria**  
 4.40 **Product Upgrade Sign-off**  
 4.41 **Product Upgrade Review**  
 4.42 **Product Upgrade Feedback**  
 4.43 **Product Upgrade Lessons Learned**  
 4.44 **Product Upgrade Best Practices**  
 4.45 **Product Upgrade Case Studies**  
 4.46 **Product Upgrade References**  
 4.47 **Product Upgrade Contacts**  
 4.48 **Product Upgrade History**  
 4.49 **Product Upgrade Status**  
 4.50 **Product Upgrade Comments**

5. **Product Name**  
 5.1 **Product Name**  
 5.2 **Product Description**  
 5.3 **Product Type**  
 5.4 **Product Category**  
 5.5 **Product Subcategory**  
 5.6 **Product Model**  
 5.7 **Product Version**  
 5.8 **Product Configuration**  
 5.9 **Product Features**  
 5.10 **Product Specifications**  
 5.11 **Product Performance**  
 5.12 **Product Reliability**  
 5.13 **Product Safety**  
 5.14 **Product Security**  
 5.15 **Product Compliance**  
 5.16 **Product Certification**  
 5.17 **Product Approval**  
 5.18 **Product Registration**  
 5.19 **Product Warranty**  
 5.20 **Product Support**  
 5.21 **Product Training**  
 5.22 **Product Documentation**  
 5.23 **Product Maintenance**  
 5.24 **Product Repair**  
 5.25 **Product Replacement**  
 5.26 **Product Disposal**  
 5.27 **Product Recycling**  
 5.28 **Product Reuse**  
 5.29 **Product Refurbishment**  
 5.30 **Product Upgrade**  
 5.31 **Product Upgrade Path**  
 5.32 **Product Upgrade Options**  
 5.33 **Product Upgrade Costs**  
 5.34 **Product Upgrade Risks**  
 5.35 **Product Upgrade Benefits**  
 5.36 **Product Upgrade Timeline**  
 5.37 **Product Upgrade Milestones**  
 5.38 **Product Upgrade Deliverables**  
 5.39 **Product Upgrade Acceptance Criteria**  
 5.40 **Product Upgrade Sign-off**  
 5.41 **Product Upgrade Review**  
 5.42 **Product Upgrade Feedback**  
 5.43 **Product Upgrade Lessons Learned**  
 5.44 **Product Upgrade Best Practices**  
 5.45 **Product Upgrade Case Studies**  
 5.46 **Product Upgrade References**  
 5.47 **Product Upgrade Contacts**  
 5.48 **Product Upgrade History**  
 5.49 **Product Upgrade Status**  
 5.50 **Product Upgrade Comments**

6. **Product Name**  
 6.1 **Product Name**  
 6.2 **Product Description**  
 6.3 **Product Type**  
 6.4 **Product Category**  
 6.5 **Product Subcategory**  
 6.6 **Product Model**  
 6.7 **Product Version**  
 6.8 **Product Configuration**  
 6.9 **Product Features**  
 6.10 **Product Specifications**  
 6.11 **Product Performance**  
 6.12 **Product Reliability**  
 6.13 **Product Safety**  
 6.14 **Product Security**  
 6.15 **Product Compliance**  
 6.16 **Product Certification**  
 6.17 **Product Approval**  
 6.18 **Product Registration**  
 6.19 <



[illegible]



# Proposed Section BB

41

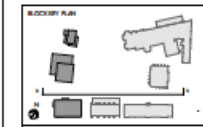


DESIGN AND CONSTRUCTION SPECIFICATIONS
SAFETY, HEALTH AND ENVIRONMENTAL PROTECTION
CONSTRUCTION
MAINTENANCE AND REPAIRS
It is assumed that all work described in this drawing is to be carried out in accordance with the relevant standards and specifications, and any work not shown, is to be carried out in accordance with the relevant standards and specifications.

The work shall be in accordance with the following:

The drawings shall be read in conjunction with all relevant standards and specifications.

The drawings shall be read in conjunction with the relevant standards and specifications.



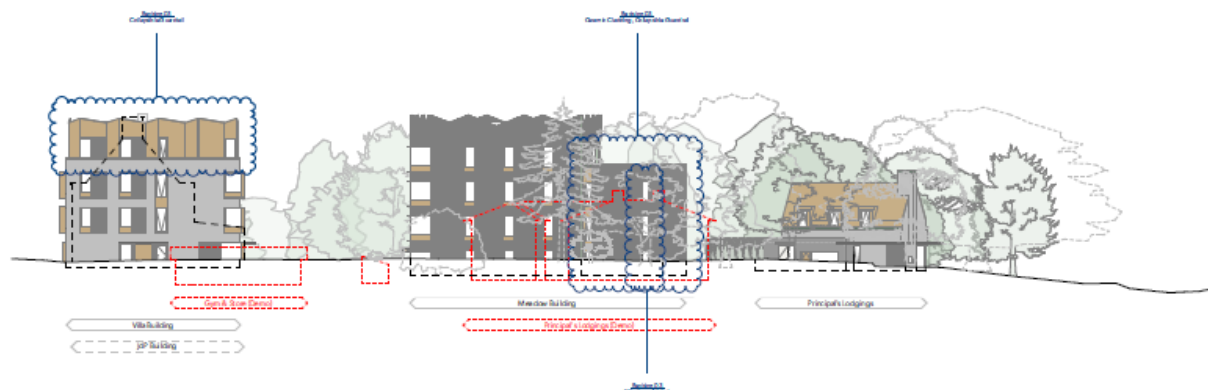
NO.	REVISION	DATE	BY	CHECKED
1	ISSUED FOR TENDER	10/10/2023	JD	JD
2	FOR CONSTRUCTION	10/10/2023	JD	JD
3	FOR CONSTRUCTION	10/10/2023	JD	JD
4	FOR CONSTRUCTION	10/10/2023	JD	JD
5	FOR CONSTRUCTION	10/10/2023	JD	JD
6	FOR CONSTRUCTION	10/10/2023	JD	JD
7	FOR CONSTRUCTION	10/10/2023	JD	JD
8	FOR CONSTRUCTION	10/10/2023	JD	JD
9	FOR CONSTRUCTION	10/10/2023	JD	JD
10	FOR CONSTRUCTION	10/10/2023	JD	JD

DESIGNENGINE ARCHITECTS

10/10/2023	10/10/2023	10/10/2023
10/10/2023	10/10/2023	10/10/2023
10/10/2023	10/10/2023	10/10/2023
10/10/2023	10/10/2023	10/10/2023
10/10/2023	10/10/2023	10/10/2023
10/10/2023	10/10/2023	10/10/2023
10/10/2023	10/10/2023	10/10/2023
10/10/2023	10/10/2023	10/10/2023
10/10/2023	10/10/2023	10/10/2023
10/10/2023	10/10/2023	10/10/2023



## 42



SAFETY, HEALTH AND ENVIRONMENTAL SUB-SECTION
ENVIRONMENTALISM
MAINTENANCE / TO BE MAINTAINED

The *is* I scale from this showing:

The *is* showing led to the need for conjunction with all relevant Amendments as if the method involving a combination and specification.

The *is* showing led to the need for conjunction with the latest version as if the method of a combination of the relevant Amendment and the latest version as if the method of a combination and specification.

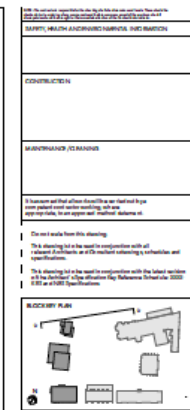
[illegible]

DESIGNENGINE  
ARCHITECTS

<p><b>Topic</b> 1803 to Public College Home 2</p> <p><b>Unit</b> to Public College</p> <p><b>PLANNING</b></p>	<p><b>Meeting</b> January 2022</p> <p><b>Responsible</b> Responsible - Ben Gervais CC</p> <p><b>PL-1700</b></p>
---	---



## 43

[illegible]

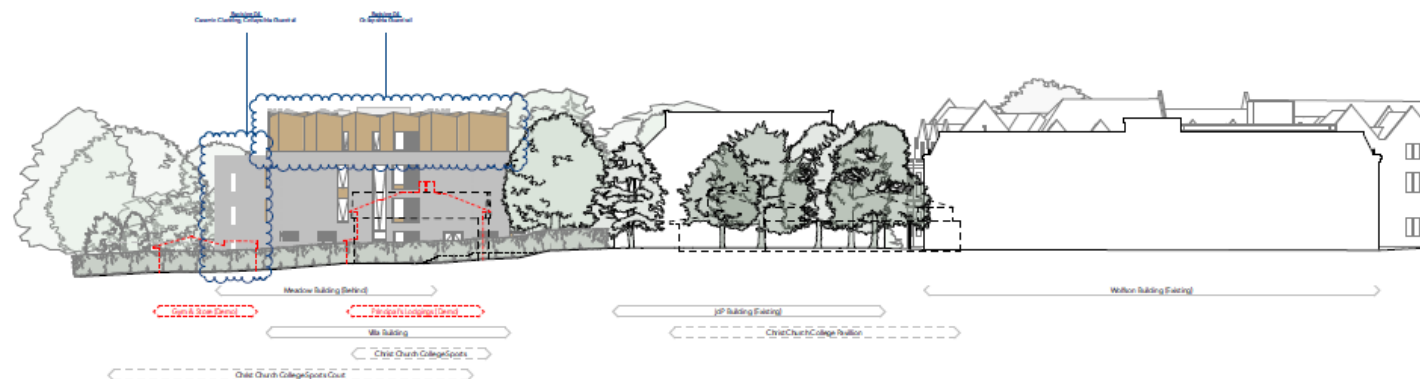
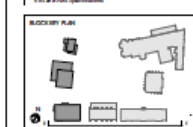
DESIGNENGINE  
ARCHITECTS

<p><b>Project</b> TREC to HHS College Base 2</p> <p><b>Start</b> January 2021</p> <p><b>End</b> September 2021</p> <p><b>PLANNING</b></p>	<p><b>Manager</b> January 2021</p> <p><b>Manager</b> September 2021</p> <p><b>PL-1704</b></p>	<p><b>Score</b> 0.2</p>
---	---	-----------------------------





## 44

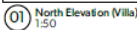
[illegible][illegible]

DESIGNENGINE  
ARCHITECTS

<p><b>Topic</b> TREC in Public College Room 2</p> <p><b>Topic</b> TREC in Public College</p> <p><b>PLANNING</b></p>	<p><b>Meeting</b> January 2021</p> <p><b>Meeting</b> Meeting at - On Location FY</p> <p><b>PL-1705</b></p>	<p><b>Score</b> 100%</p> <p><b>Score</b> 0%</p>
---	--	---



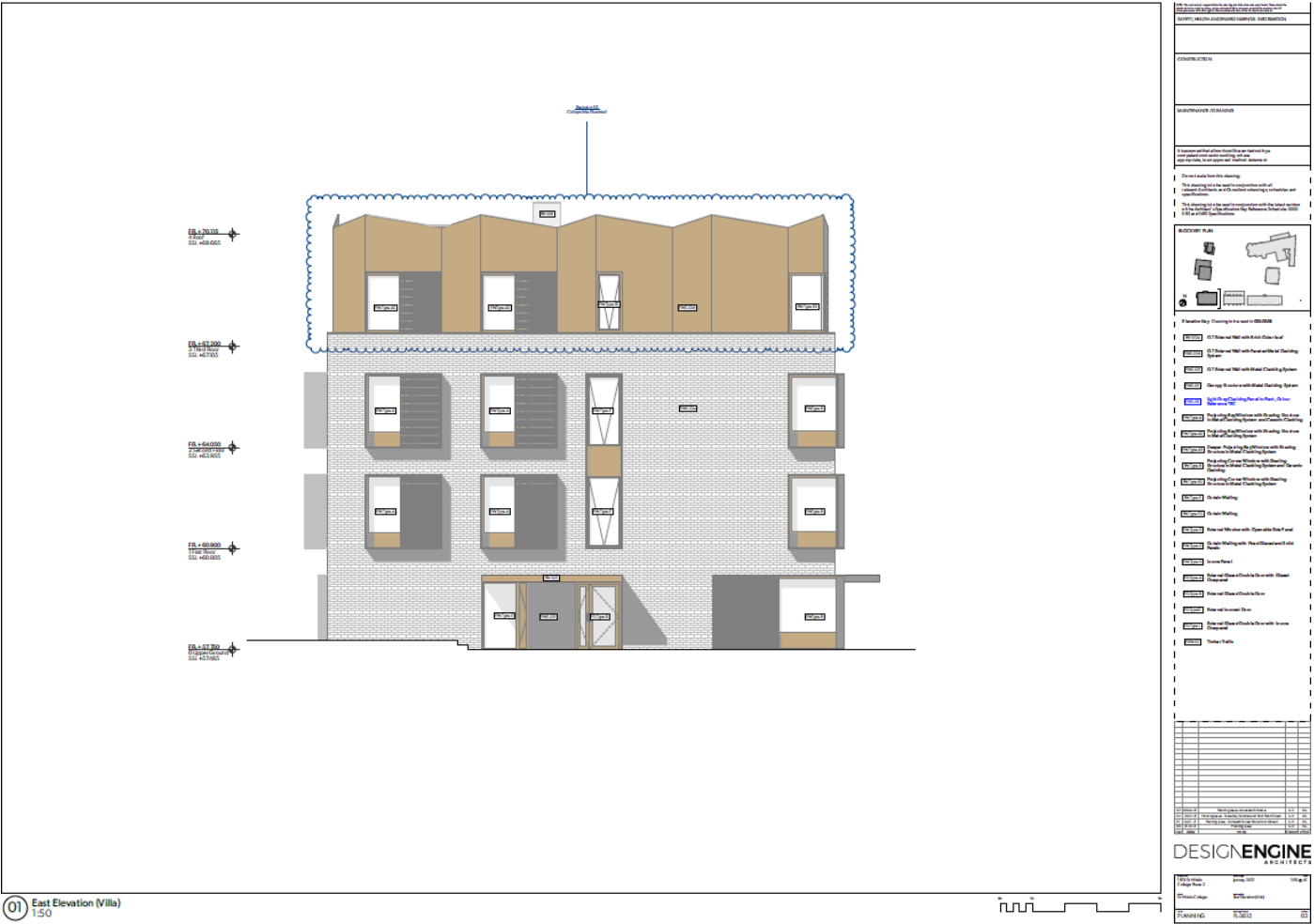
## 45





# Villa Building- East Elevation

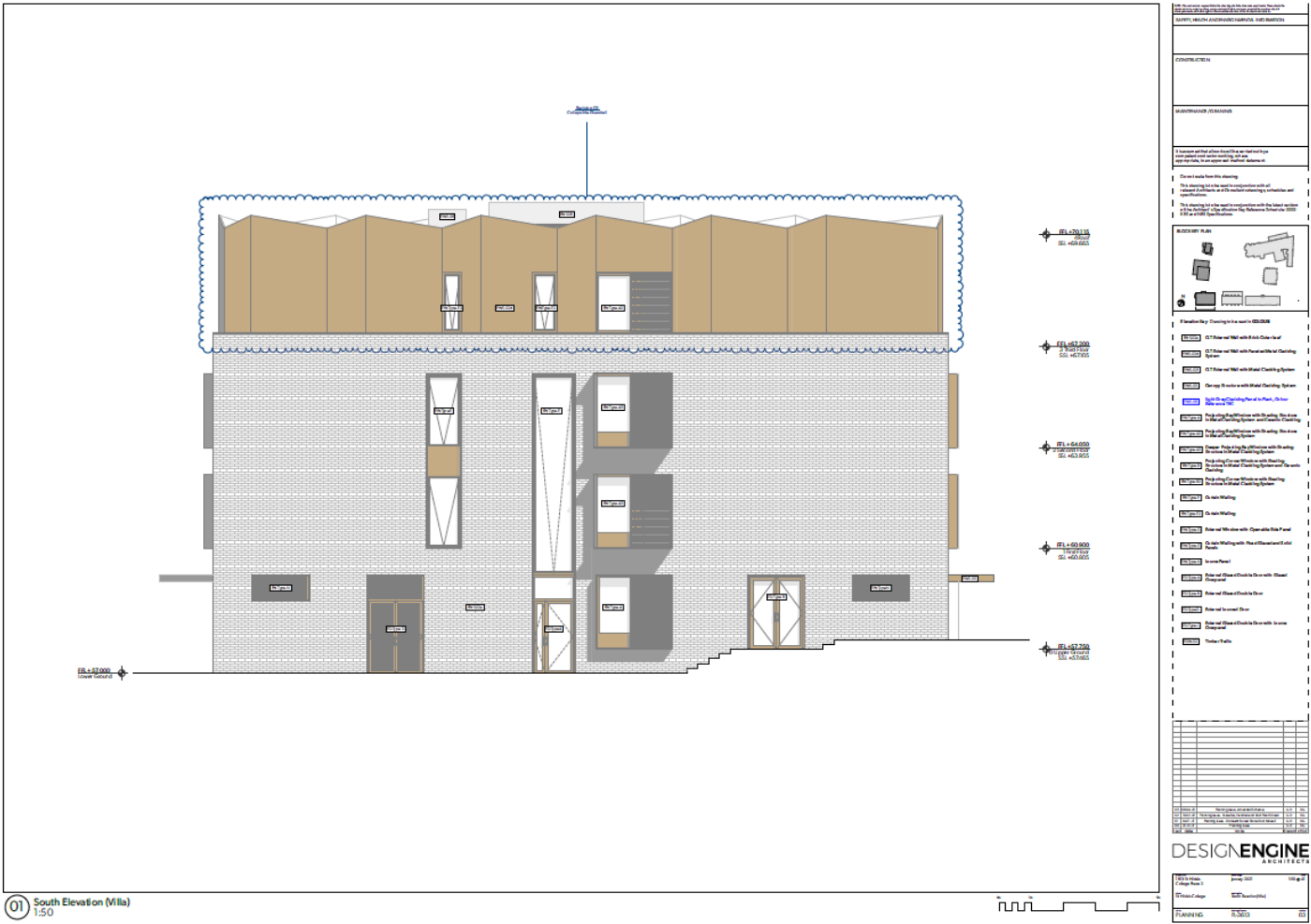
46





Villa Building- South Elevation

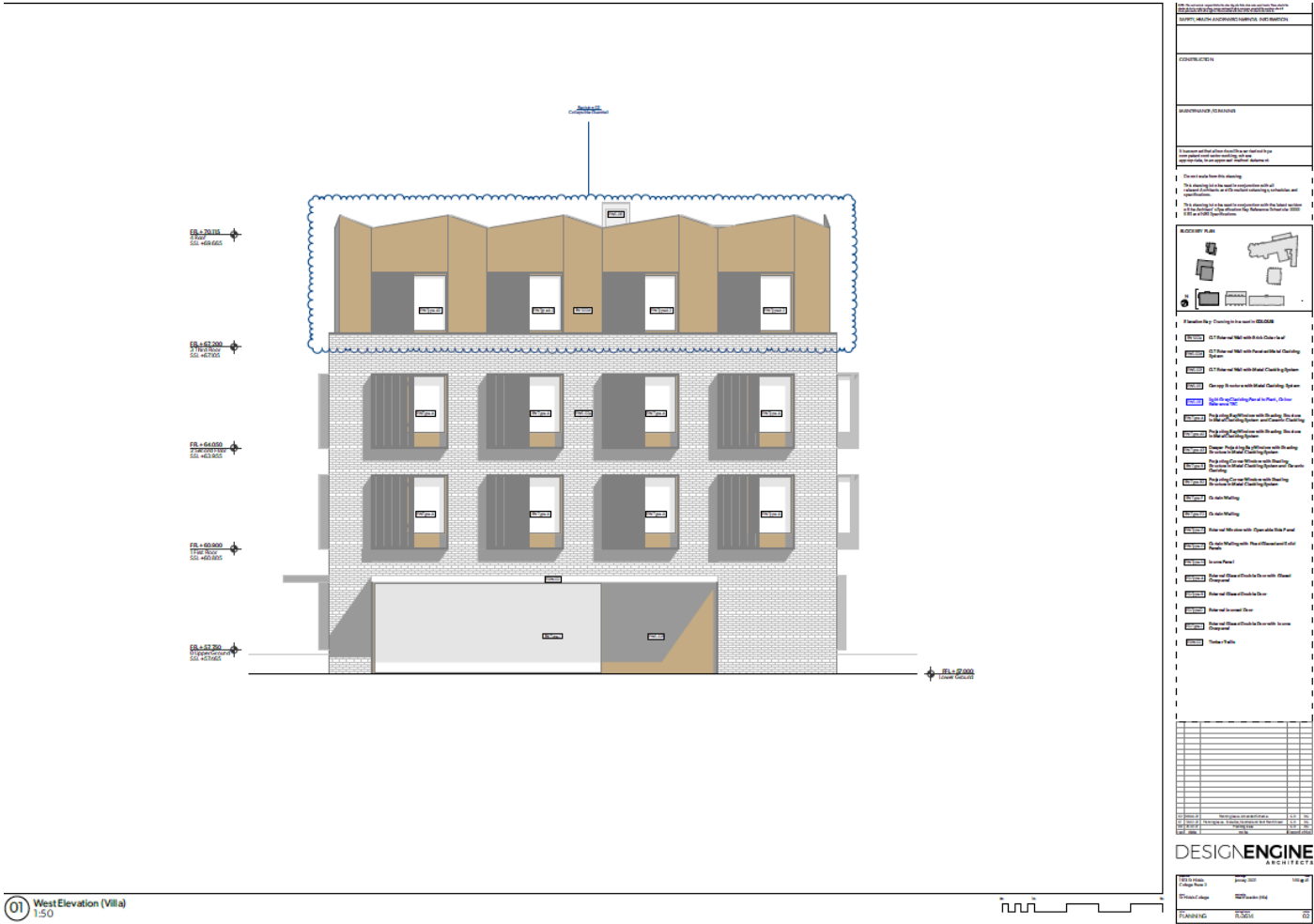
47





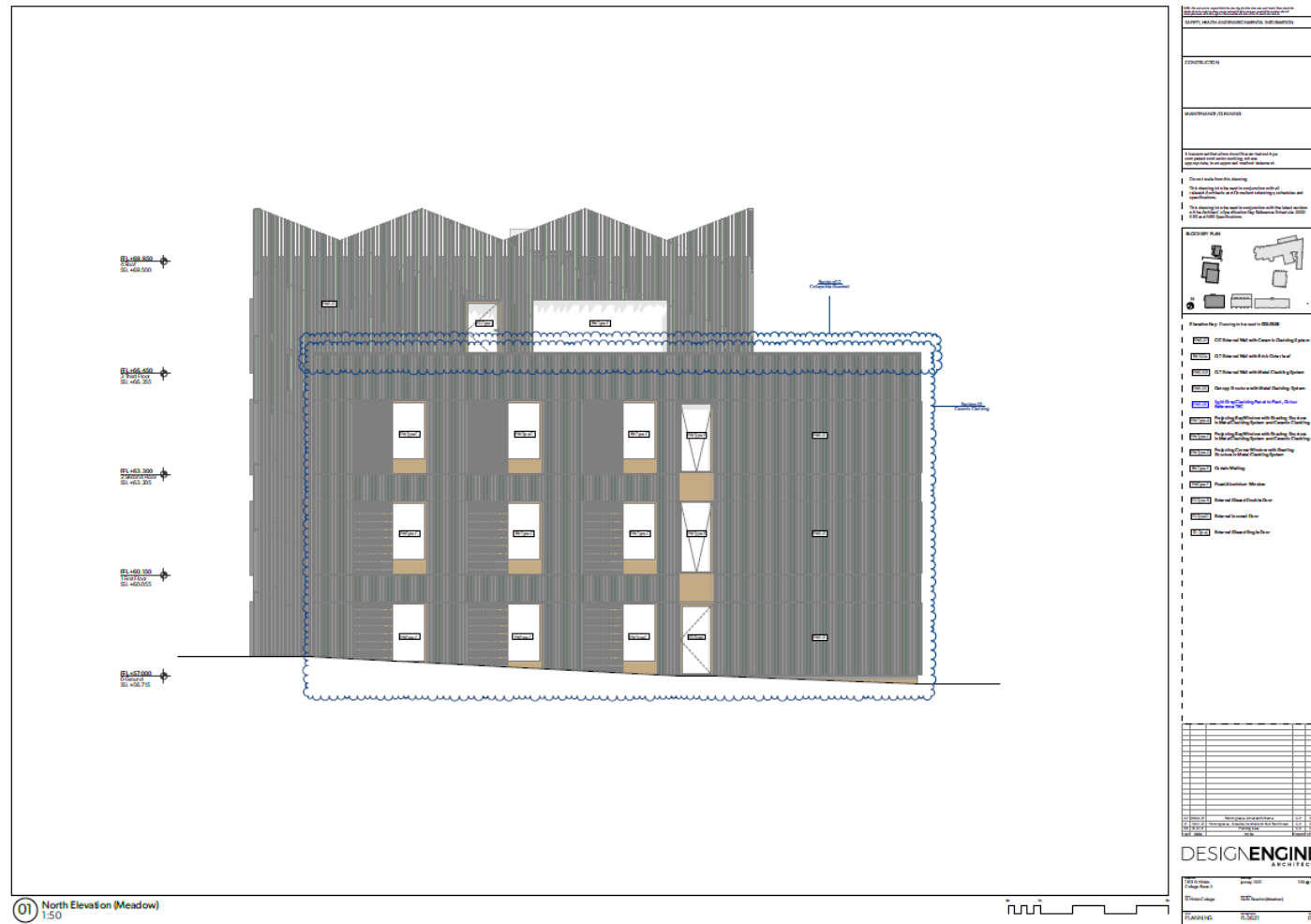
Villa Building- West Elevation

48



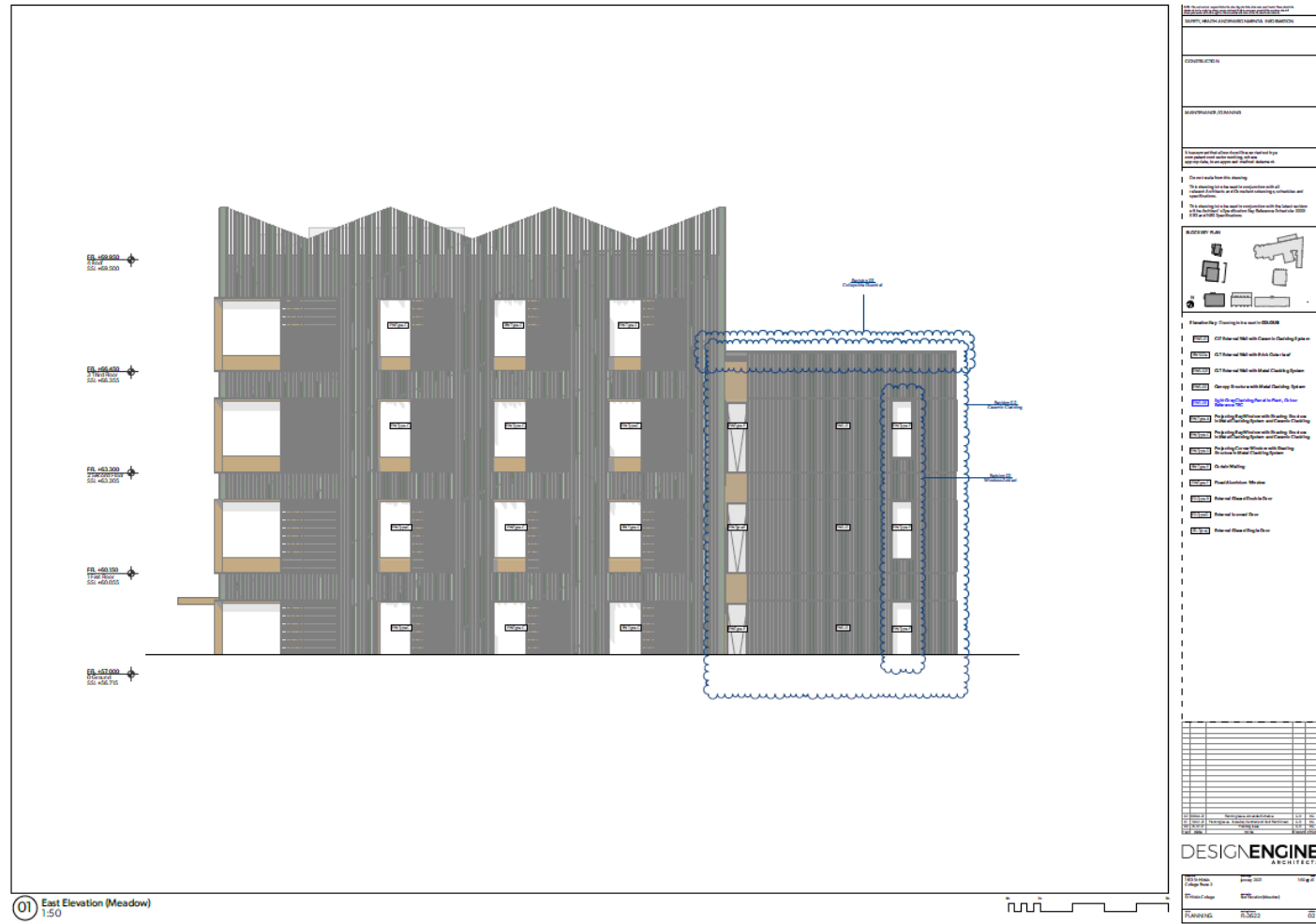


## 49





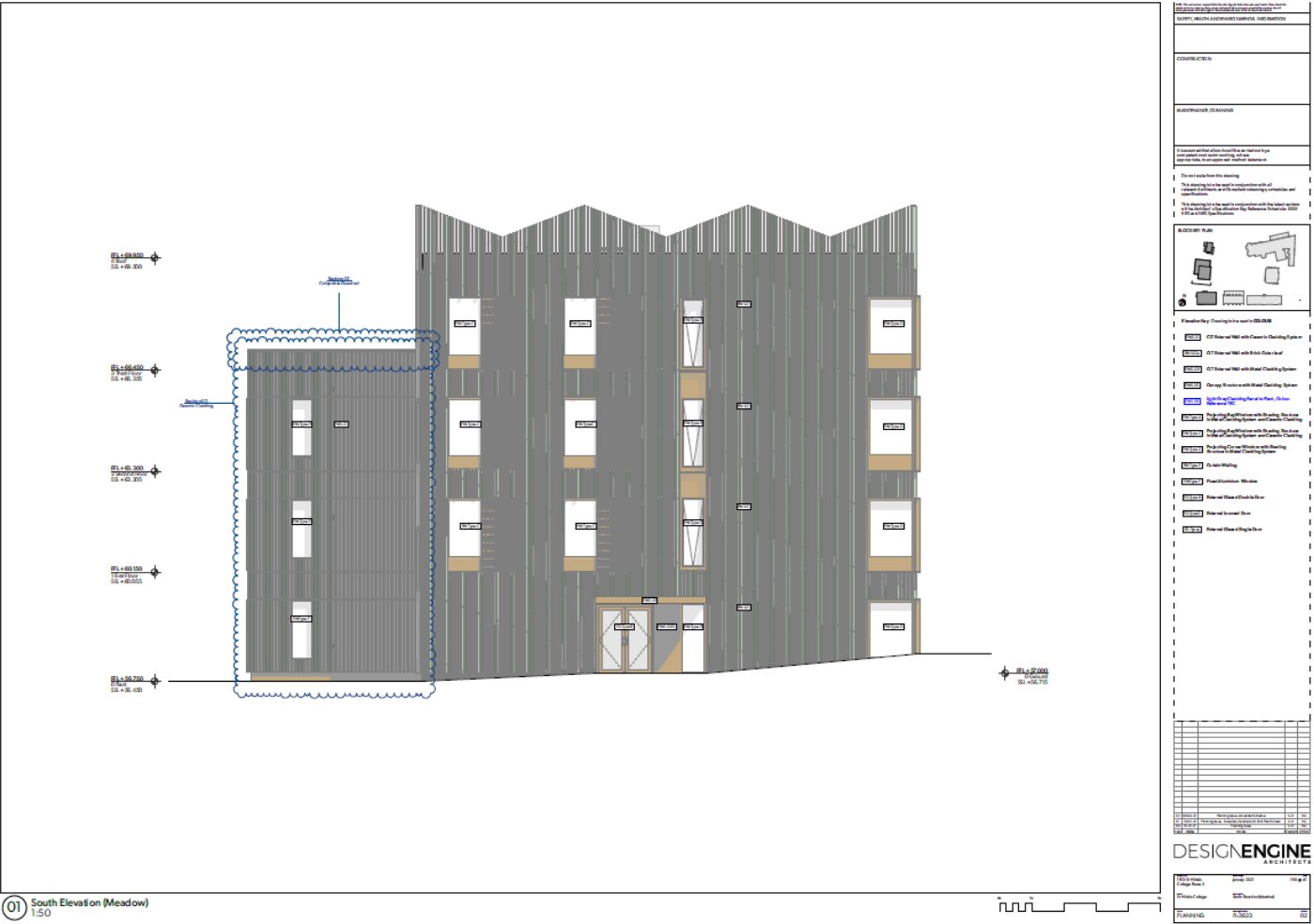
## Meadow Building- East Elevation





Meadow Building- South Elevation

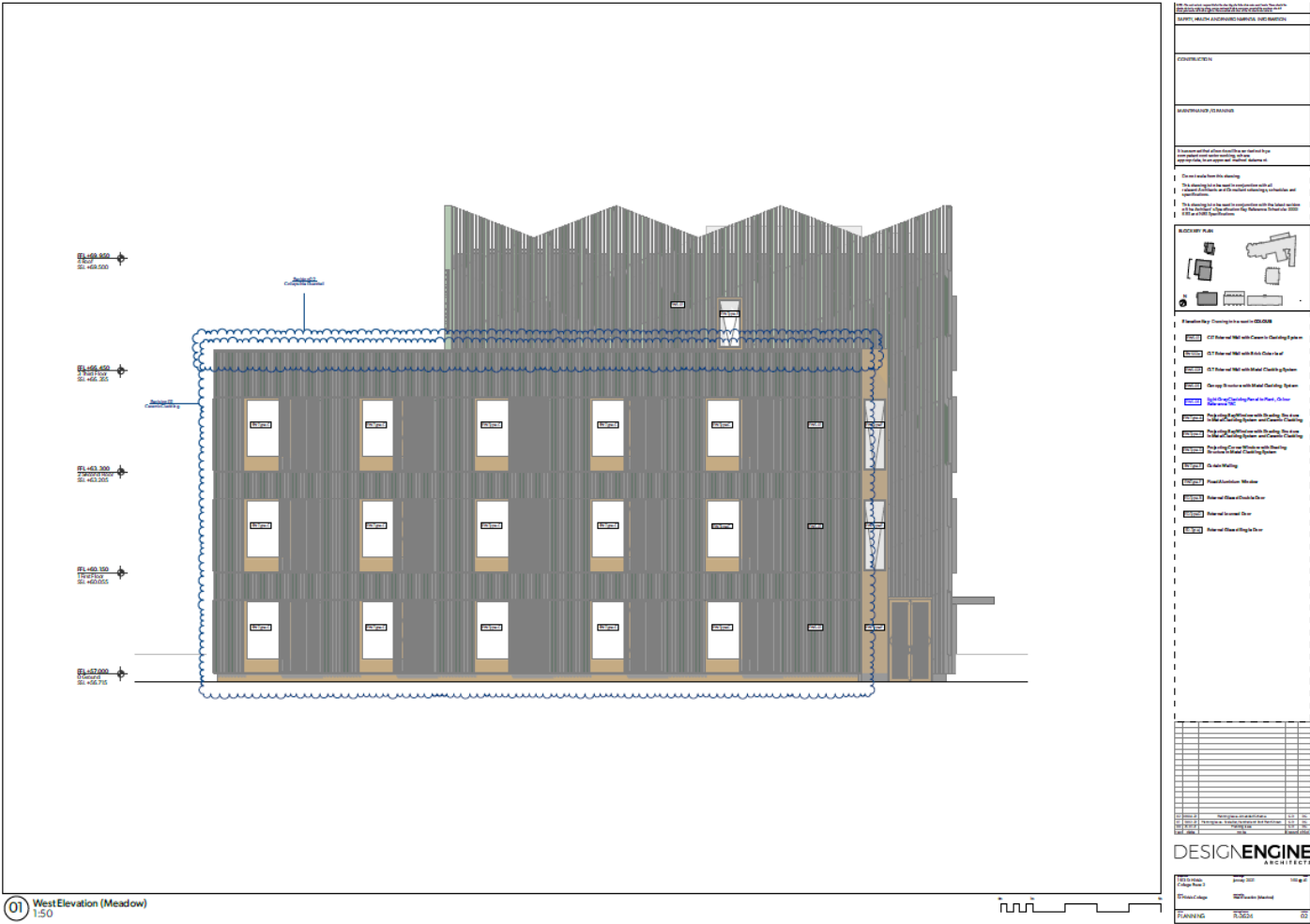
51





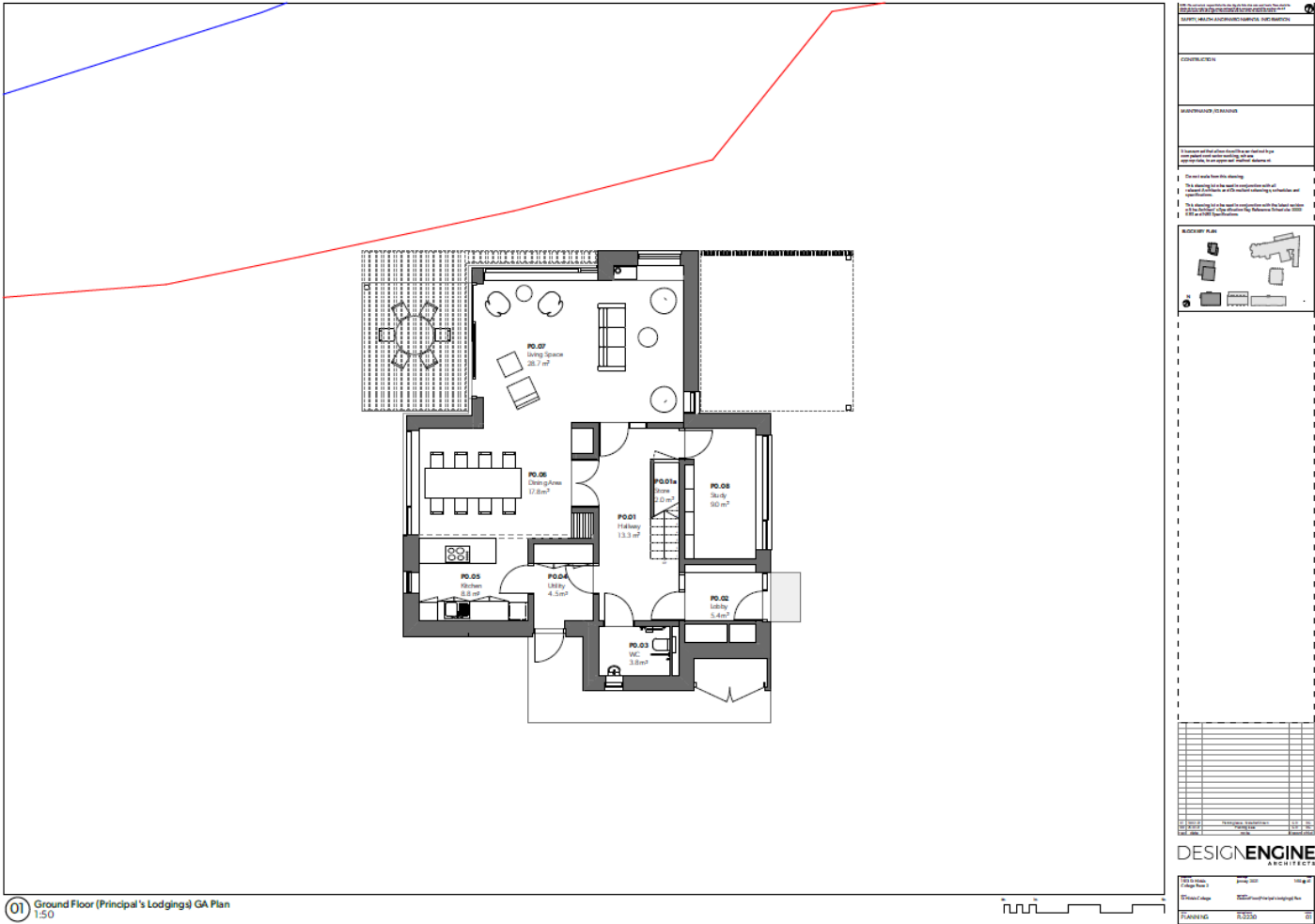
Meadow Building- West Elevation

52



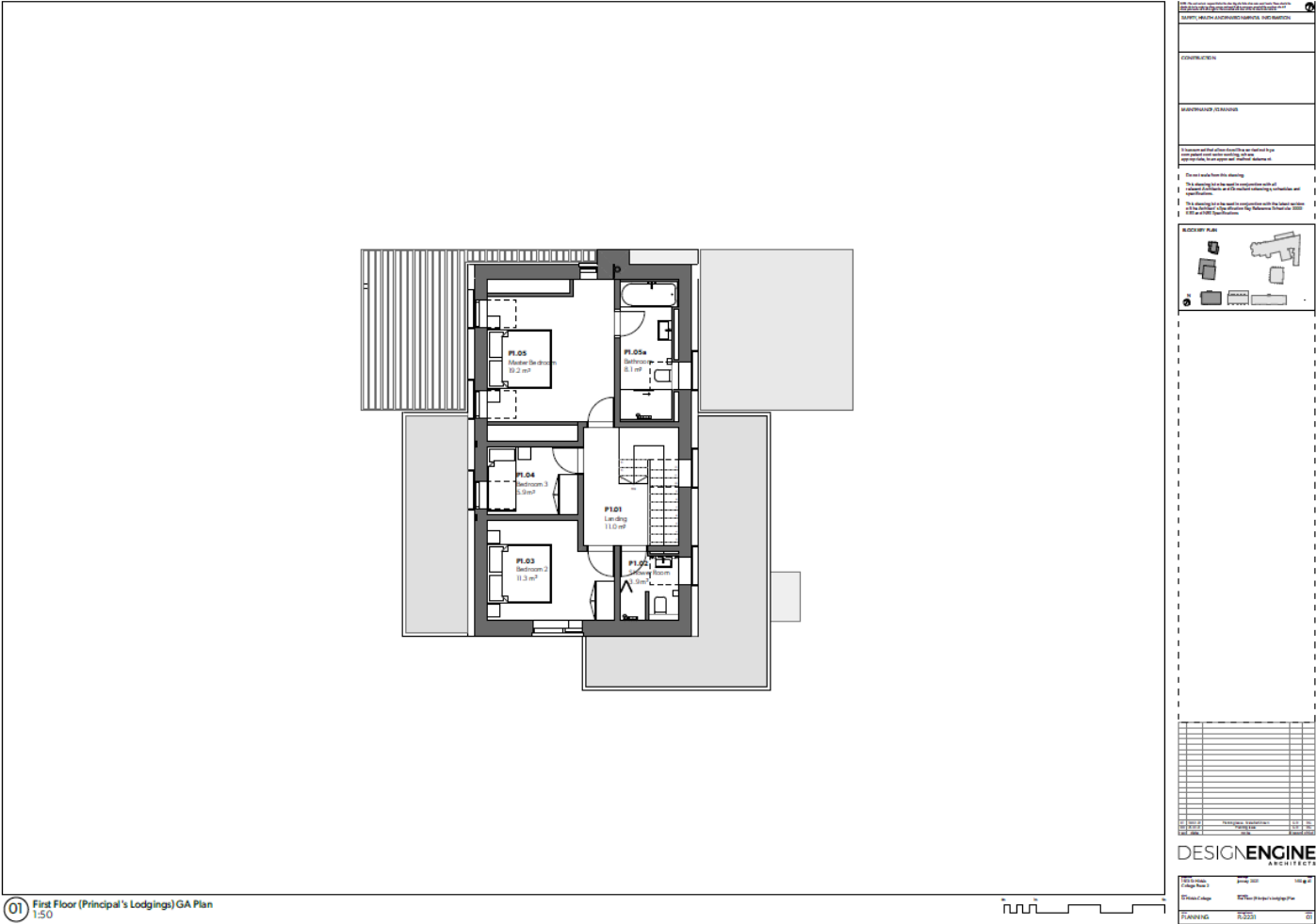


Proposed Ground Floor Plan – Principal’s Lodging



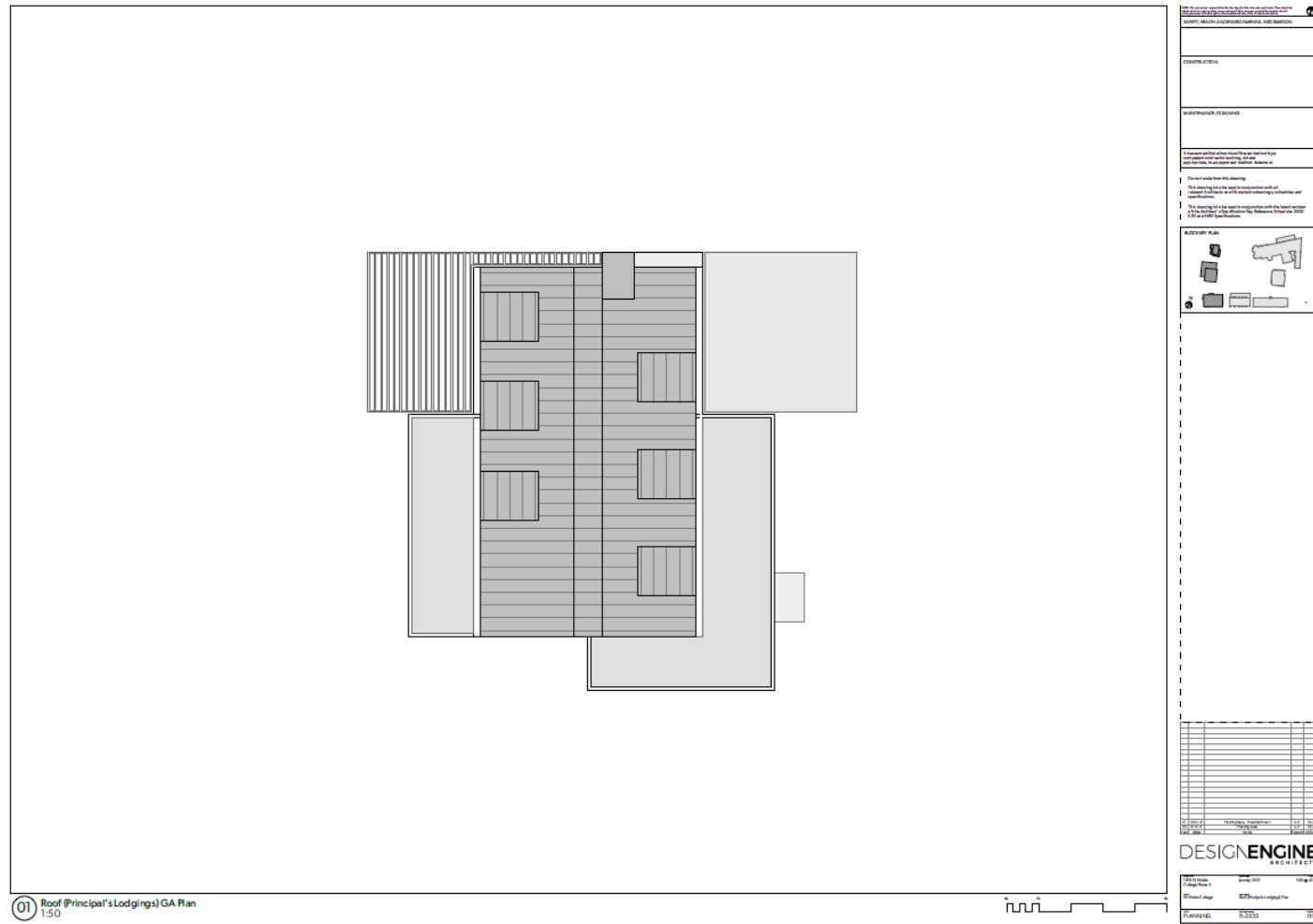


Proposed First Floor Plan – Principal’s Lodging



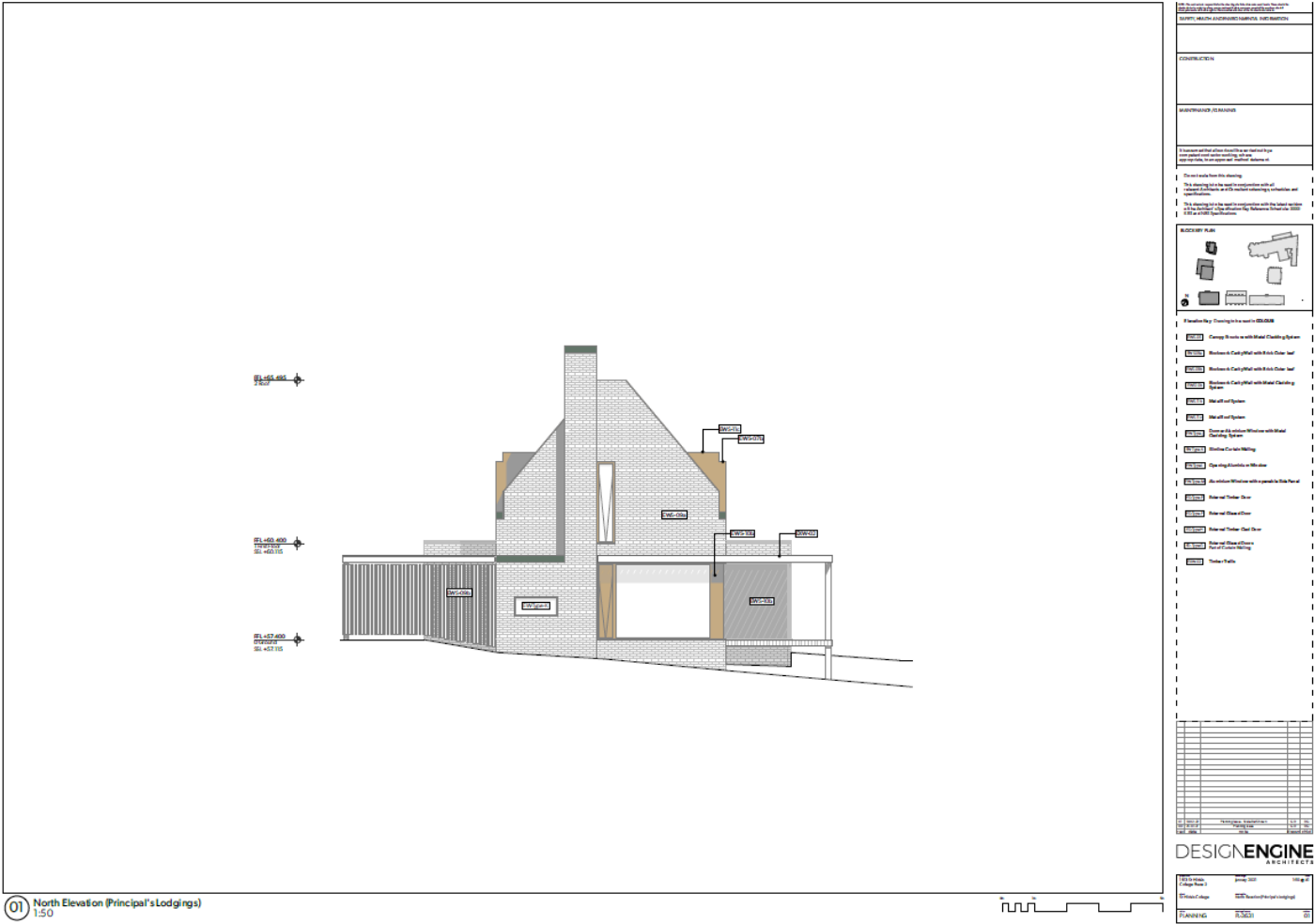


# Proposed Roof Plan – Principal's Lodging





Proposed Principal's Lodgings – North Elevation



Proposed Principal's Lodgings – East Elevation

57





## 58



## 59

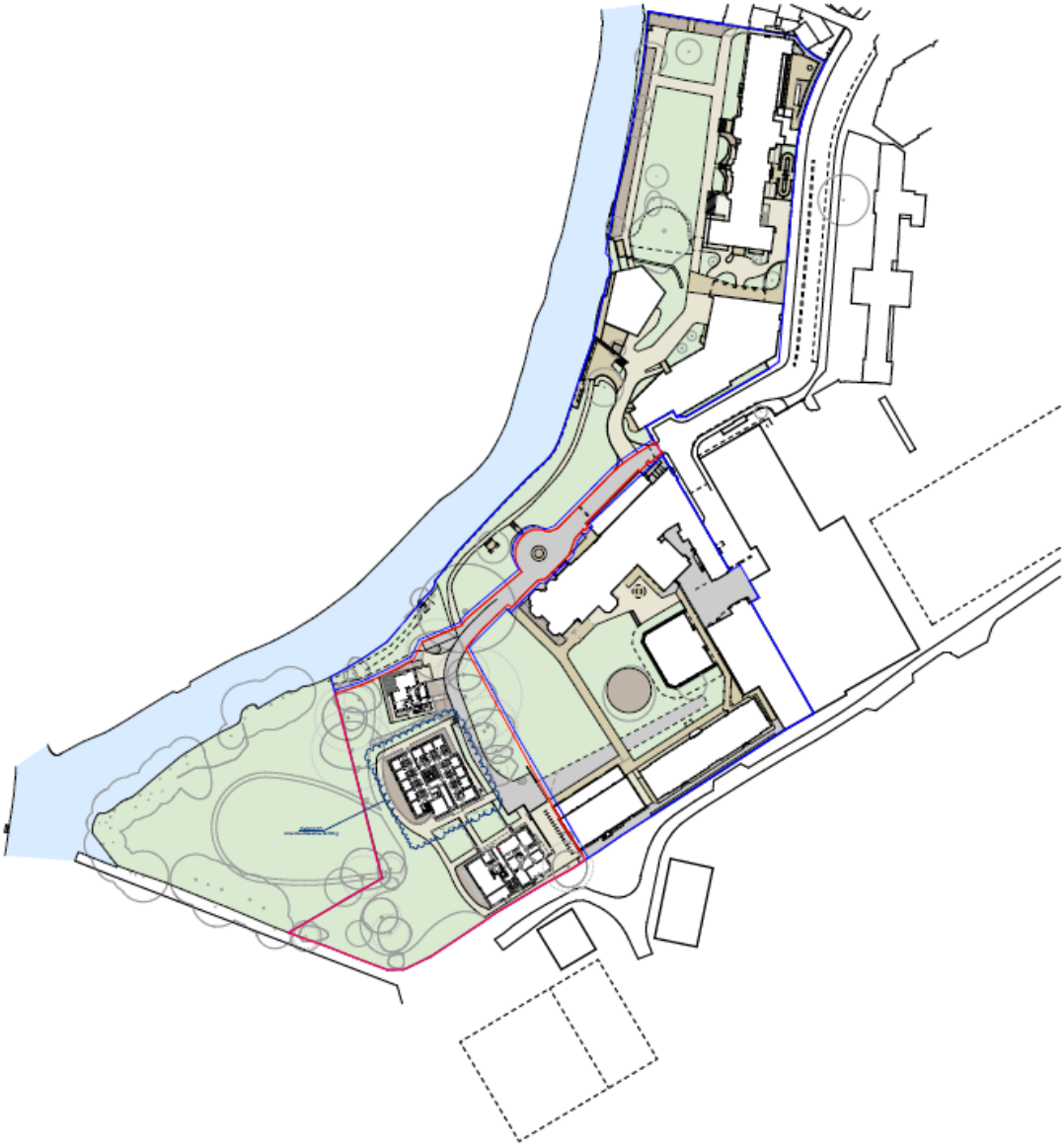




## 60



Proposed Site Plan



OXFORD CITY COUNCIL

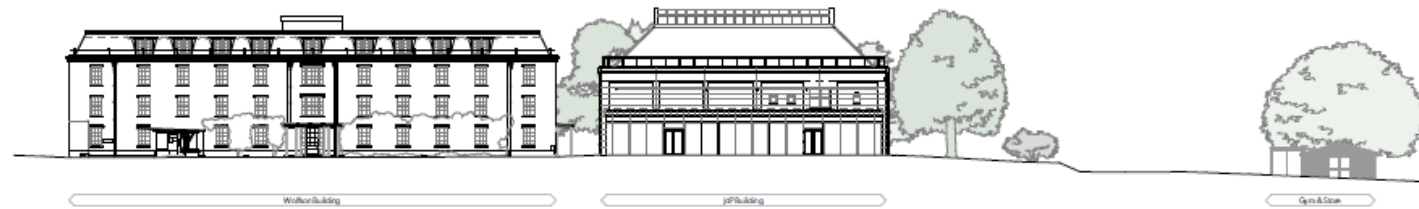
DESIGNENGINE

01 Proposed - Site Plan  
1:500





Existing site section - AA



<p>THESE QUESTIONS ARE DESIGNED TO ASSESS YOUR KNOWLEDGE OF THE BASIC CONCEPTS OF THE COURSE. THEY ARE NOT MEANT TO BE A COMPREHENSIVE REVIEW OF THE COURSE. THEY ARE MEANT TO BE A GUIDE TO THE STUDY OF THE COURSE.</p>
<p>NAME: _____</p>
<p>DATE: _____</p>
<p>SECTION: _____</p>
<p>INSTRUCTOR: _____</p>
<p>STUDENT ID: _____</p>
<p>QUESTION 1: _____</p>
<p>QUESTION 2: _____</p>
<p>QUESTION 3: _____</p>
<p>QUESTION 4: _____</p>
<p>QUESTION 5: _____</p>
<p>QUESTION 6: _____</p>
<p>QUESTION 7: _____</p>
<p>QUESTION 8: _____</p>
<p>QUESTION 9: _____</p>
<p>QUESTION 10: _____</p>
<p>QUESTION 11: _____</p>
<p>QUESTION 12: _____</p>
<p>QUESTION 13: _____</p>
<p>QUESTION 14: _____</p>
<p>QUESTION 15: _____</p>
<p>QUESTION 16: _____</p>
<p>QUESTION 17: _____</p>
<p>QUESTION 18: _____</p>
<p>QUESTION 19: _____</p>
<p>QUESTION 20: _____</p>
<p>QUESTION 21: _____</p>
<p>QUESTION 22: _____</p>
<p>QUESTION 23: _____</p>
<p>QUESTION 24: _____</p>
<p>QUESTION 25: _____</p>
<p>QUESTION 26: _____</p>
<p>QUESTION 27: _____</p>
<p>QUESTION 28: _____</p>
<p>QUESTION 29: _____</p>
<p>QUESTION 30: _____</p>
<p>QUESTION 31: _____</p>
<p>QUESTION 32: _____</p>
<p>QUESTION 33: _____</p>
<p>QUESTION 34: _____</p>
<p>QUESTION 35: _____</p>
<p>QUESTION 36: _____</p>
<p>QUESTION 37: _____</p>
<p>QUESTION 38: _____</p>
<p>QUESTION 39: _____</p>
<p>QUESTION 40: _____</p>
<p>QUESTION 41: _____</p>
<p>QUESTION 42: _____</p>
<p>QUESTION 43: _____</p>
<p>QUESTION 44: _____</p>
<p>QUESTION 45: _____</p>
<p>QUESTION 46: _____</p>
<p>QUESTION 47: _____</p>
<p>QUESTION 48: _____</p>
<p>QUESTION 49: _____</p>
<p>QUESTION 50: _____</p>
<p>QUESTION 51: _____</p>
<p>QUESTION 52: _____</p>
<p>QUESTION 53: _____</p>
<p>QUESTION 54: _____</p>
<p>QUESTION 55: _____</p>
<p>QUESTION 56: _____</p>
<p>QUESTION 57: _____</p>
<p>QUESTION 58: _____</p>
<p>QUESTION 59: _____</p>
<p>QUESTION 60: _____</p>
<p>QUESTION 61: _____</p>
<p>QUESTION 62: _____</p>
<p>QUESTION 63: _____</p>
<p>QUESTION 64: _____</p>
<p>QUESTION 65: _____</p>
<p>QUESTION 66: _____</p>
<p>QUESTION 67: _____</p>
<p>QUESTION 68: _____</p>
<p>QUESTION 69: _____</p>
<p>QUESTION 70: _____</p>
<p>QUESTION 71: _____</p>
<p>QUESTION 72: _____</p>
<p>QUESTION 73: _____</p>
<p>QUESTION 74: _____</p>
<p>QUESTION 75: _____</p>
<p>QUESTION 76: _____</p>
<p>QUESTION 77: _____</p>
<p>QUESTION 78: _____</p>
<p>QUESTION 79: _____</p>
<p>QUESTION 80: _____</p>
<p>QUESTION 81: _____</p>
<p>QUESTION 82: _____</p>
<p>QUESTION 83: _____</p>
<p>QUESTION 84: _____</p>
<p>QUESTION 85: _____</p>
<p>QUESTION 86: _____</p>
<p>QUESTION 87: _____</p>
<p>QUESTION 88: _____</p>
<p>QUESTION 89: _____</p>
<p>QUESTION 90: _____</p>
<p>QUESTION 91: _____</p>
<p>QUESTION 92: _____</p>
<p>QUESTION 93: _____</p>
<p>QUESTION 94: _____</p>
<p>QUESTION 95: _____</p>
<p>QUESTION 96: _____</p>
<p>QUESTION 97: _____</p>
<p>QUESTION 98: _____</p>
<p>QUESTION 99: _____</p>
<p>QUESTION 100: _____</p>

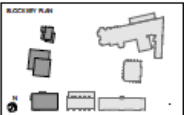
[illegible]

DESIGNENGINE  
ARCHITECTS

1000 to 1000	January 2020	1000 to 1000
1000 to 1000	February - The Service Unit	
PLANNING	R-0701	01



## 95

[illegible]

DESIGNENGINE  
ARCHITECTS

<b>Topic</b> INFO To Hilda College Room 2	<b>Meeting</b> January 2020	<b>Page</b> 5/2000
<b>Topic</b> To Hilda College	<b>Meeting</b> Meeting - the Section 88	
<b>Topic</b> PLANNING	<b>Meeting</b> R.O.702	<b>Page</b> 01





# Existing site section - CC



01 Existing - Site Section CC  
1:200

01

02

03

04

05

06

07

08

09

10

11

12

13

14

15

16

17

18

19

20

21

22

23

24

25

26

27

28

29

30

31

32

33

34

35

36

37

38

39

40

41

42

43

44

45

46

47

48

49

50

51

52

53

54

55

56

57

58

59

60

61

62

63

64

65

66

67

68

69

70

71

72

73

74

75

76

77

78

79

80

81

82

83

84

85

86

87

88

89

90

91

92

93

94

95

96

97

98

99

100

101

102

103

104

105

106

107

108

109

110

111

112

113

114

115

116

117

118

119

120

121

122

123

124

125

126

127

128

129

130

131

132

133

134

135

136

137

138

139

140

141

142

143

144

145

146

147

148

149

150

151

152

153

154

155

156

157

158

159

160

161

162

163

164

165

166

167

168

169

170

171

172

173

174

175

176

177

178

179

180

181

182

183

184

185

186

187

188

189

190

191

192

193

194

195

196

197

198

199

200

201

202

203

204

205

206

207

208

209

210

211

212

213

214

215

216

217

218

219

220

221

222

223

224

225

226

227

228

229

230

231

232

233

234

235

236

237

238

239

240

241

242

243

244

245

246

247

248

249

250

251

252

253

254

255

256

257

258

259

260

261

262

263

264

265

266

267

268

269

270

271

272

273

274

275

276

277

278

279

280

281

282

283

284

285

286

287

288

289

290

291

292

293

294

295

296

297

298

299

300

301

302

303

304

305

306

307

308

309

310

311

312

313

314

315

316

317

318

319

320

321

322

323

324

325

326

327

328

329

330

331

332

333

334

335

336

337

338

339

340

341

342

343

344

345

346

347

348

349

350

351

352

353

354

355

356

357

358

359

360

361

362

363

364

365

366

367

368

369

370

371

372

373

374

375

376

377

378

379

380

381

382

383

384

385

386

387

388

389

390

391

392

393

394

395

396

397

398

399

400

401

402

403

404

405

406

407

408

409

410

411

412

413

414

415

416

417

418

419

420

421

422

423

424

425

426

427

428

429

430

431

432

433

434

435

436

437

438

439

440

441

442

443

444

445

446

447

448

449

450

451

452

453

454

455

456

457

458

459

460

461

462

463

464

465

466

467

468

469

470

471

472

473

474

475

476

477

478

479

480

481

482

483

484

485

486

487

488

489

490

491

492

493

494

495

496

497

498

499

500

501

502

503

504

505

506

507

508

509

510

511

512

513

514

515

516

517

518

519

520

521

522

523

524

525

526

527

528

529

530

531

532

533

534

535

536

537

538

539

540

541

542

543

544

545

546

547

548

549

550

551

552

553

554

555

556

557

558

559

560

561

562

563

564

565

566

567

568

569

570

571

572

573

574

575

576

577

578

579

580

581

582

583

584

585

586

587

588

589

590

591

592

593

594

595

596

597

598

599

600

601

602

603

604

605

606

607

608

609

610

611

612

613

614

615

616

617

618

619

620

621

622

623

624

625

626

627

628

629

630

631

632

633

634

635

636

637

638

639

640

641

642

643

644

645

646

647

648

649

650

651

652

653

654

655

656

657

658

659

660

661

662

663

664

665

666

667

668

669

670

671

672

673

674

675

676

677

678

679

680

681

682

683

684

685

686

687

688

689

690

691

692

693

694

695

696

697

698

699

700

701

702

703

704

705

706

707

708

709

710

711

712

713

714

715

716

717

718

719

720

721

722

723

724

725

726

727

728

729

730

731

732

733

734

735

736

737

738

739

740

741

742

743

744

745

746

747

748

749

750

751

752

753

754

755

756

757

758

759

760

761

762

763

764

765

766

767

768

769

770

771

772

773

774

775

776

777

778

779

780

781

782

783

784

785

786

787

788

789

790

791

792

793

794

795

796

797

798

799

800

801

802

803

804

805

806

807

808

809

810

811

812

813

814

815

816

817

818

819

820

821

822

823

824

825

826

827

828

829

830

831

832

833

834

835

836

837

838

839

840

841

842

843

844

845

846

847

848

849

850

851

852

853

854

855

856

857

858

859

860

861

862

863

864

865

866

867

868

869

870

871

872

873

874

875

876

877

878

879

880

881

882

883

884

885

886

887

888

889

890

891

892

893

894

895

896

897

898

899

900

901

902

903

904

905

906

907

908

909

910

911

912

913

914

915

916

917

918

919

920

921

922

923

924

925

926

927

928

929

930

931

932

933

934

935

936

937

938

939

940

941

942

943

944

945

946

947

948

949

950

951

952

953

954

955

956

957

958

959

960

961

962

963

964

965

966

967

968

969

970

971

972

973

974

975

976

977

978

979

980

981

982

983

984

985

986

987

988

989

990

991

992

993

994

995

996

997

998

999

1000

1001

1002

1003

1004

1005

1006

1007

1008

1009

1010

1011

1012

1013

1014

1015

1016

1017

1018

1019

1020

1021

1022

1023

1024

1025

1026

1027

1028

1029

1030

1031

1032

1033

1034

1035

1036

1037

1038

1039

1040

1041

1042

1043

1044

1045

1046

1047

1048

1049

1050

1051

1052

1053

1054

1055

1056

1057

1058

1059

1060

1061

1062

1063

1064

1065

1066

1067

1068

1069

1070

1071

1072

1073

1074

1075

1076

1077

1078

1079

1080

1081

1082

1083

1084

1085

1086

1087

1088

1089

1090

1091

1092

1093

1094

1095

1096

1097

1098

1099

1100

1101

1102

1103

1104

1105

1106

1107

1108

1109

1110

1111

1112

1113

1114

1115

1116

1117

1118

1119

1120

1121

1122

1123

1124

1125

1126

1127

1128

1129

1130

1131

1132

1133

1134

1135

1136

1137

1138

1139

1140

1141

1142

1143

1144

1145

1146

1147

1148

1149

1150

1151

1152

1153

1154

1155

1156

1157

1158

1159

1160

1161

1162

1163

1164

1165

1166

1167

1168

1169

1170

1171

1172

1173

1174

1175

1176

1177

1178

1179

1180

1181

1182

1183

1184

1185

1186

1187

1188

1189

1190

1191

1192

1193

1194

1195

1196

1197

1198

1199

1200

1201

1202

1203

1204

1205

1206

1207

1208

1209

1210

1211

1212

1213

1214

1215

1216

1217

1218

1219

1220

1221

1222

1223

1224

1225

1226

1227

1228

1229

1230

1231

1232

1233

1234

1235

1236

1237

1238

1239

1240

1241

1242

1243

1244

1245

1246

1247

1248

1249

1250

1251

1252

1253

1254

1255

1256

1257

1258

1259

1260

1261

1262

1263

1264

1265

1266

1267

1268

1269

1270

1271

1272

1273

1274

1275

1276

1277

1278

1279

1280

1281

1282

1283

1284

1285

1286

1287

1288

1289

1290

1291

1292

1293

1294

1295

1296

1297

1298

1299

1300

1301

1302

1303

1304

1305

1306

1307

1308

1309

1310

1311

1312

1313

1314

1315

13

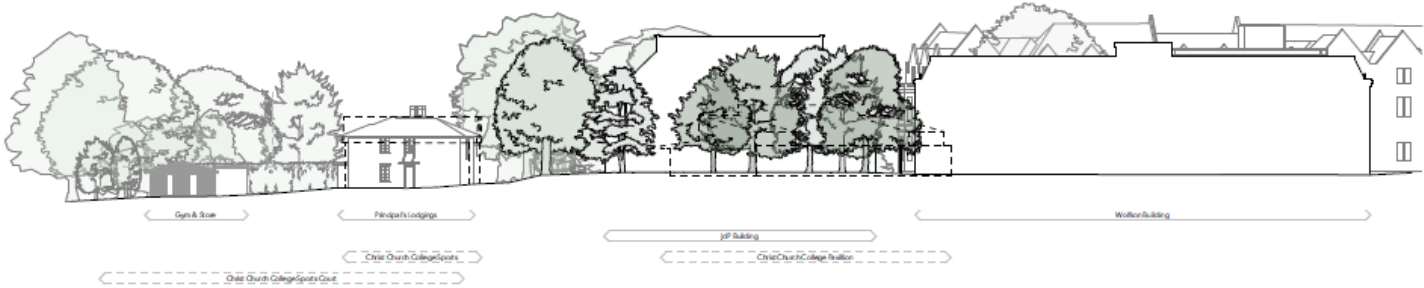
## Existing site section - DD



<p><small>DESIGN ENGINE ARCHITECTS</small></p> <p><b>SAFETY, HEALTH AND ENVIRONMENTAL INFORMATION</b></p> <p><b>CONSTRUCTION</b></p> <p><b>MATERIALS/COLORS</b></p> <p><small>It is assumed that all materials will be sourced and fit for purpose and compliance with all relevant standards and specifications, unless otherwise stated. For an approved material statement, please refer to the project file.</small></p> <p><small>Do not scale from this drawing.</small></p> <p><small>This drawing is to be used in conjunction with all relevant specifications and standards, including, but not limited to, the following:</small></p> <p><small>The drawing is to be used in conjunction with the latest version of the Architect's Specification (see Reference Schedule 0000-0000 and 0000-0000).</small></p> <p><b>BOOK KEY PLAN</b></p> <p><small>DATE: 10/10/2023</small></p> <p><small>PROJECT: 10000000</small></p> <p><small>BY: [Signature]</small></p> <p><small>CHECKED: [Signature]</small></p> <p><small>APPROVED: [Signature]</small></p>
--



Existing site section - EE



01 Existing - Site Section EE  
1:200

01

02

03

04

05

06

07

08

09

10

11

12

13

14

15

16

17

18

19

20

21

22

23

24

25

26

27

28

29

30

31

32

33

34

35

36

37

38

39

40

41

42

43

44

45

46

47

48

49

50

51

52

53

54

55

56

57

58

59

60

61

62

63

64

65

66

67

68

69

70

71

72

73

74

75

76

77

78

79

80

81

82

83

84

85

86

87

88

89

90

91

92

93

94

95

96

97

98

99

100

101

102

103

104

105

106

107

108

109

110

111

112

113

114

115

116

117

118

119

120

121

122

123

124

125

126

127

128

129

130

131

132

133

134

135

136

137

138

139

140

141

142

143

144

145

146

147

148

149

150

151

152

153

154

155

156

157

158

159

160

161

162

163

164

165

166

167

168

169

170

171

172

173

174

175

176

177

178

179

180

181

182

183

184

185

186

187

188

189

190

191

192

193

194

195

196

197

198

199

200

201

202

203

204

205

206

207

208

209

210

211

212

213

214

215

216

217

218

219

220

221

222

223

224

225

226

227

228

229

230

231

232

233

234

235

236

237

238

239

240

241

242

243

244

245

246

247

248

249

250

251

252

253

254

255

256

257

258

259

260

261

262

263

264

265

266

267

268

269

270

271

272

273

274

275

276

277

278

279

280

281

282

283

284

285

286

287

288

289

290

291

292

293

294

295

296

297

298

299

300

301

302

303

304

305

306

307

308

309

310

311

312

313

314

315

316

317

318

319

320

321

322

323

324

325

326

327

328

329

330

331

332

333

334

335

336

337

338

339

340

341

342

343

344

345

346

347

348

349

350

351

352

353

354

355

356

357

358

359

360

361

362

363

364

365

366

367

368

369

370

371

372

373

374

375

376

377

378

379

380

381

382

383

384

385

386

387

388

389

390

391

392

393

394

395

396

397

398

399

400

401

402

403

404

405

406

407

408

409

410

411

412

413

414

415

416

417

418

419

420

421

422

423

424

425

426

427

428

429

430

431

432

433

434

435

436

437

438

439

440

441

442

443

444

445

446

447

448

449

450

451

452

453

454

455

456

457

458

459

460

461

462

463

464

465

466

467

468

469

470

471

472

473

474

475

476

477

478

479

480

481

482

483

484

485

486

487

488

489

490

491

492

493

494

495

496

497

498

499

500

501

502

503

504

505

506

507

508

509

510

511

512

513

514

515

516

517

518

519

520

521

522

523

524

525

526

527

528

529

530

531

532

533

534

535

536

537

538

539

540

541

542

543

544

545

546

547

548

549

550

551

552

553

554

555

556

557

558

559

560

561

562

563

564

565

566

567

568

569

570

571

572

573

574

575

576

577

578

579

580

581

582

583

584

585

586

587

588

589

590

591

592

593

594

595

596

597

598

599

600

601

602

603

604

605

606

607

608

609

610

611

612

613

614

615

616

617

618

619

620

621

622

623

624

625

626

627

628

629

630

631

632

633

634

635

636

637

638

639

640

641

642

643

644

645

646

647

648

649

650

651

652

653

654

655

656

657

658

659

660

661

662

663

664

665

666

667

668

669

670

671

672

673

674

675

676

677

678

679

680

681

682

683

684

685

686

687

688

689

690

691

692

693

694

695

696

697

698

699

700

701

702

703

704

705

706

707

708

709

710

711

712

713

714

715

716

717

718

719

720

721

722

723

724

725

726

727

728

729

730

731

732

733

734

735

736

737

738

739

740

741

742

743

744

745

746

747

748

749

750

751

752

753

754

755

756

757

758

759

760

761

762

763

764

765

766

767

768

769

770

771

772

773

774

775

776

777

778

779

780

781

782

783

784

785

786

787

788

789

790

791

792

793

794

795

796

797

798

799

800

801

802

803

804

805

806

807

808

809

810

811

812

813

814

815

816

817

818

819

820

821

822

823

824

825

826

827

828

829

830

831

832

833

834

835

836

837

838

839

840

841

842

843

844

845

846

847

848

849

850

851

852

853

854

855

856

857

858

859

860

861

862

863

864

865

866

867

868

869

870

871

872

873

874

875

876

877

878

879

880

881

882

883

884

885

886

887

888

889

890

891

892

893

894

895

896

897

898

899

900

901

902

903

904

905

906

907

908

909

910

911

912

913

914

915

916

917

918

919

920

921

922

923

924

925

926

927

928

929

930

931

932

933

934

935

936

937

938

939

940

941

942

943

944

945

946

947

948

949

950

951

952

953

954

955

956

957

958

959

960

961

962

963

964

965

966

967

968

969

970

971

972

973

974

975

976

977

978

979

980

981

982

983

984

985

986

987

988

989

990

991

992

993

994

995

996

997

998

999

1000

1001

1002

1003

1004

1005

1006

1007

1008

1009

1010

1011

1012

1013

1014

1015

1016

1017

1018

1019

1020

1021

1022

1023

1024

1025

1026

1027

1028

1029

1030

1031

1032

1033

1034

1035

1036

1037

1038

1039

1040

1041

1042

1043

1044

1045

1046

1047

1048

1049

1050

1051

1052

1053

1054

1055

1056

1057

1058

1059

1060

1061

1062

1063

1064

1065

1066

1067

1068

1069

1070

1071

1072

1073

1074

1075

1076

1077

1078

1079

1080

1081

1082

1083

1084

1085

1086

1087

1088

1089

1090

1091

1092

1093

1094

1095

1096

1097

1098

1099

1100

1101

1102

1103

1104

1105

1106

1107

1108

1109

1110

1111

1112

1113

1114

1115

1116

1117

1118

1119

1120

1121

1122

1123

1124

1125

1126

1127

1128

1129

1130

1131

1132

1133

1134

1135

1136

1137

1138

1139

1140

1141

1142

1143

1144

1145

1146

1147

1148

1149

1150

1151

1152

1153

1154

1155

1156

1157

1158

1159

1160

1161

1162

1163

1164

1165

1166

1167

1168

1169

1170

1171

1172

1173

1174

1175

1176

1177

1178

1179

1180

1181

1182

1183

1184

1185

1186

1187

1188

1189

1190

1191

1192

1193

1194

1195

1196

1197

1198

1199

1200

1201

1202

1203

1204

1205

1206

1207

1208

1209

1210

1211

1212

1213

1214

1215

1216

1217

1218

1219

1220

1221

1222

1223

1224

1225

1226

1227

1228

1229

1230

1231

1232

1233

1234

1235

1236

1237

1238

1239

1240

1241

1242

1243

1244

1245

1246

1247

1248

1249

1250

1251

1252

1253

1254

1255

1256

1257

1258

1259

1260

1261

1262

1263

1264

1265

1266

1267

1268

1269

1270

1271

1272

1273

1274

1275

1276

1277

1278

1279

1280

1281

1282

1283

1284

1285

1286

1287

1288

1289

1290

1291

1292

1293

1294

1295

1296

1297

1298

1299

1300

1301

1302

1303

1304

1305

1306

1307

1308

1309

1310

1311

1312

1313

1314

1315

1316

1317

1318

1319

1320

1321

1322

1323

1324

1325

1326

1327

1328

1329

1330

1331

1332

1333

1334

1335

1336

1337

1338

1339

1340

1341

1342

1343

1344

1345

1346

1347

1348

1349

1350

1351

1352

1353

1354

1355

1356

1357

1358

1359

1360

1361

1362

1363

1364

1365

1366

1367

1368

1369

1370

1371

1372

1373

1374

1375

1376

1377

1378

1379

1380

1381

1382

1383

1384

1385

1386

1387

1388

1389

1390

1391

1392

1393

1394

1395

1396

1397

1398

1399

1400

1401

1402

1403

1404

1405

1406

1407

1408

1409

1410

1411

1412

1413

1414

1415

1416

1417

1418

1419

1420

1421

1422

1423

1424

1425

1426

1427

1428

1429

1430

1431

1432

1433

1434

1435

1436

1437

1438

1439

1440

1441

1442

1443

1444

1445

1446

1447

1448

1449

1450

1451

1452

1453

1454

1455

1456

1457

1458

1459

1460

1461

1462

146

# Oxford City Planning Committee Presentation

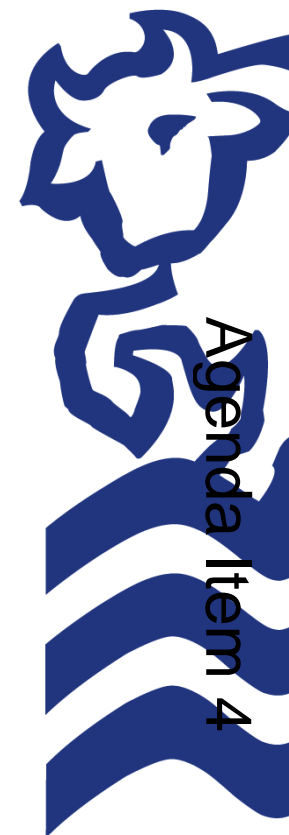
[www.oxford.gov.uk](http://www.oxford.gov.uk)



**Reference Number: 22/00679/FUL**

**Site Address: Oxford Brookes  
University, Headington Hill Campus**

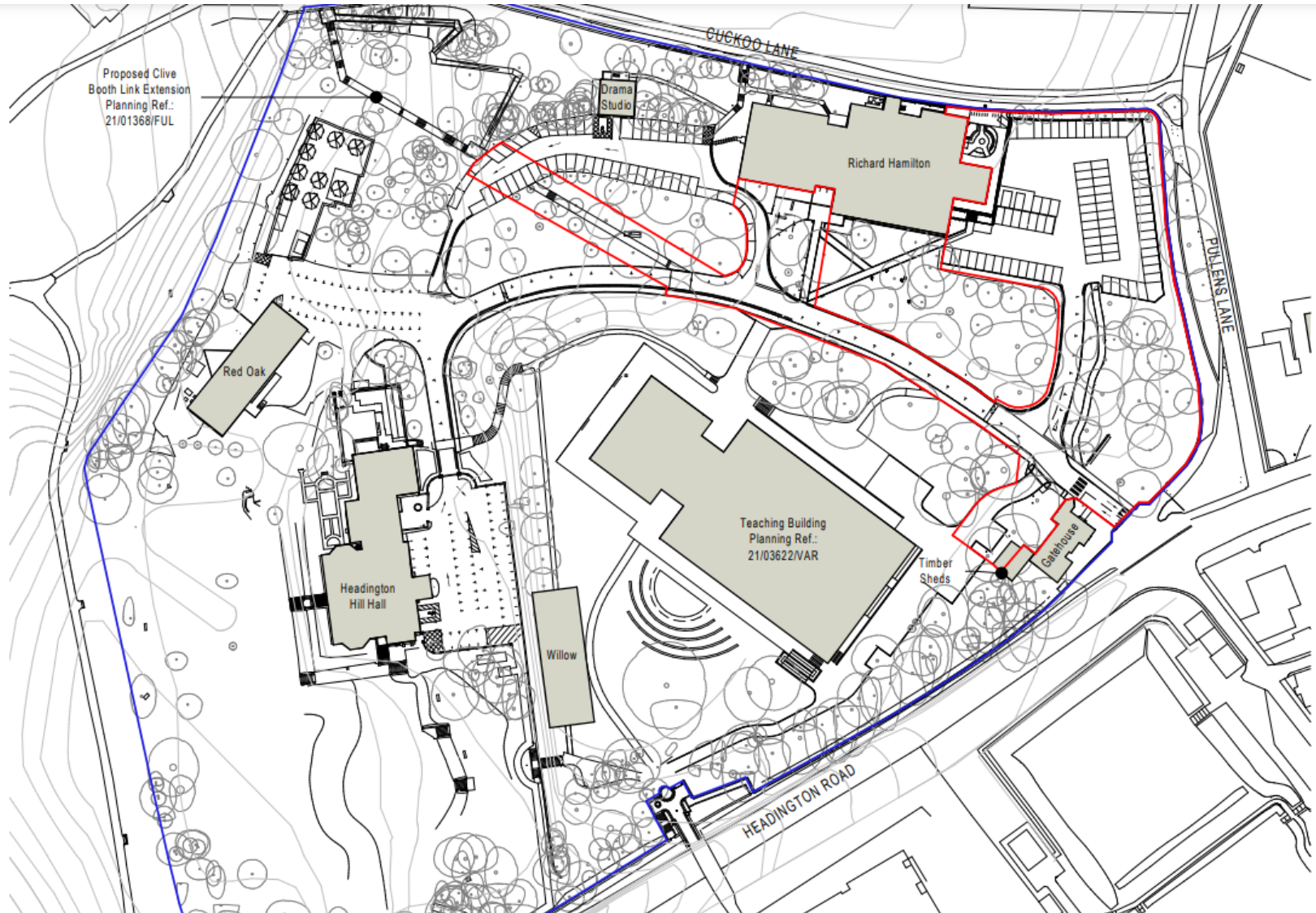
67





# Site Location Plan

89



# Site Plan



[www.oxford.gov.uk](http://www.oxford.gov.uk)





# Aerial Plan

[www.oxford.gov.uk](http://www.oxford.gov.uk)



# Site Block Plan



[www.oxford.gov.uk](http://www.oxford.gov.uk)

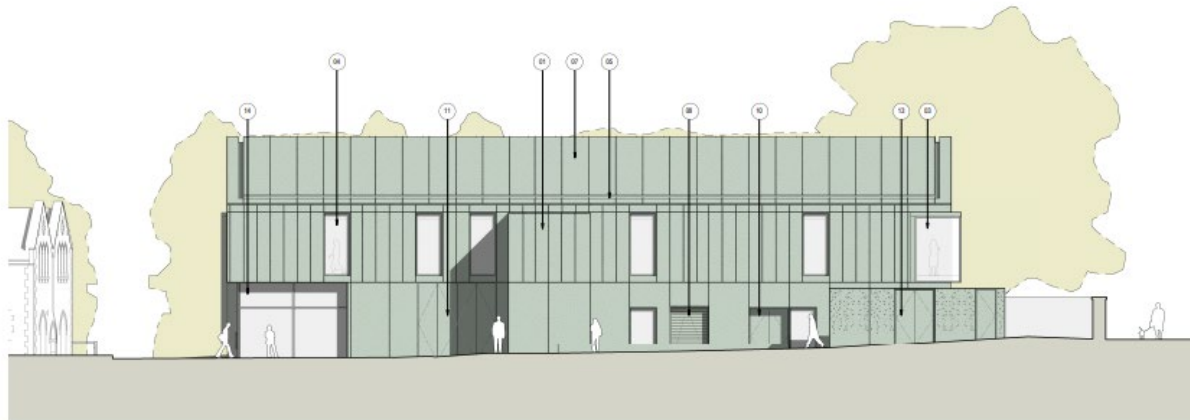




# Proposed Elevations



① New Workshop Building North Elevation  
1 : 100



② New Workshop Building South Elevation  
1 : 100



# Proposed Elevations



New Workshop Building East Elevation  
1:100



New Workshop Building West Elevation  
1:100





# Site Section

[www.oxford.gov.uk](http://www.oxford.gov.uk)



PULLENS  
LANE

WORKSHOP BUILDING

RICHARD HAMILTON



## 75





## 76



# Context Visuals



[www.oxford.gov.uk](http://www.oxford.gov.uk)





# Context Visuals – Pullens Lane



# Oxford City Planning Committee Presentation

[www.oxford.gov.uk](http://www.oxford.gov.uk)



**Reference Number: 21/03622/VAR**

**Site Address: Helena Kennedy Centre,  
Headington Road, Headington Hill**

79

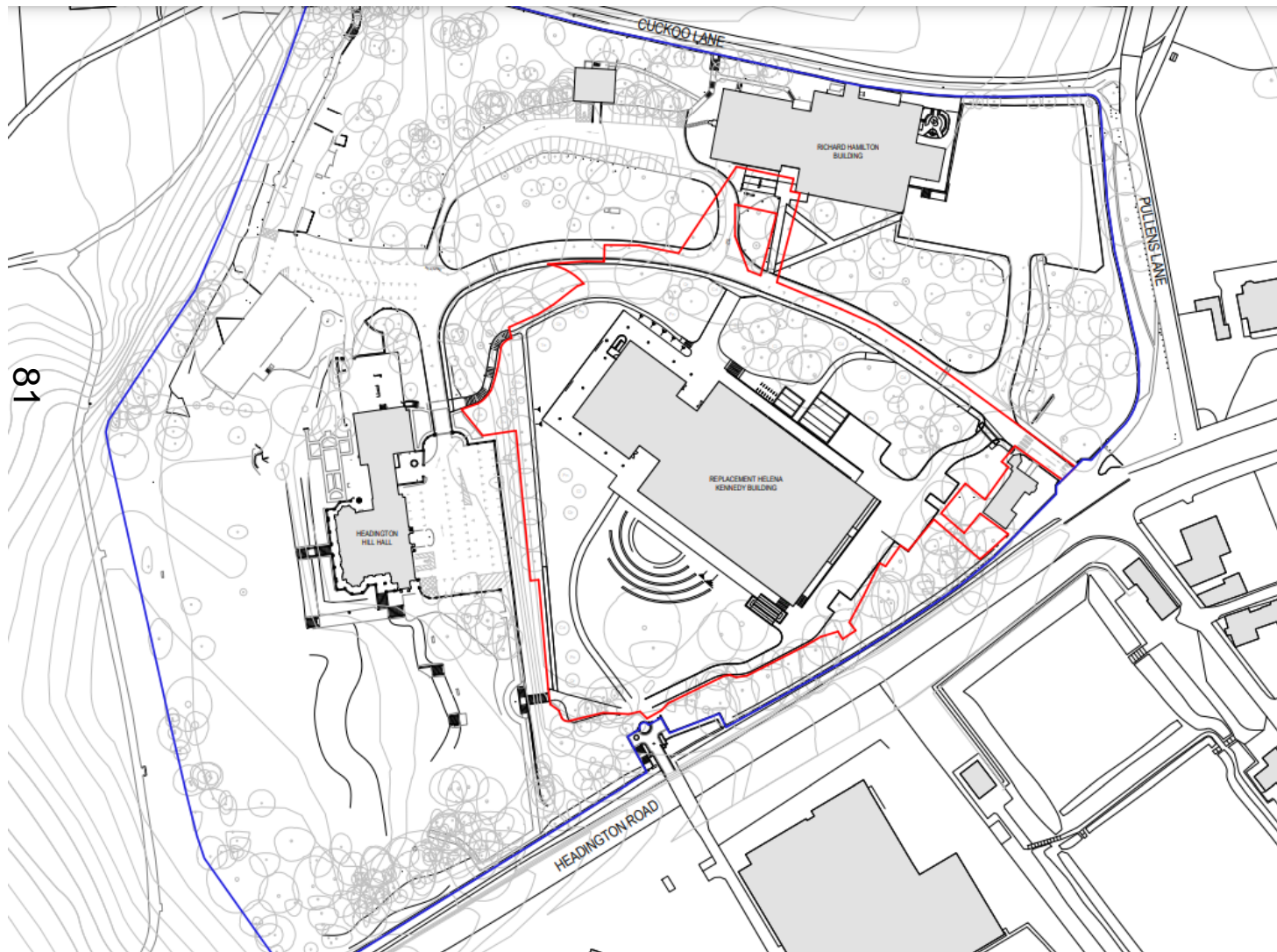




# Site Aerial Plan



# Proposed Site Plan



[www.oxford.gov.uk](http://www.oxford.gov.uk)





# Landscape Plan





# Site Photos

gov.uk





# Site Photo



d.gov.uk



**OXFORD  
CITY  
COUNCIL**





# Site Photos

.gov.uk



OXFORD  
CITY  
COUNCIL





# Site Photos

gov.uk

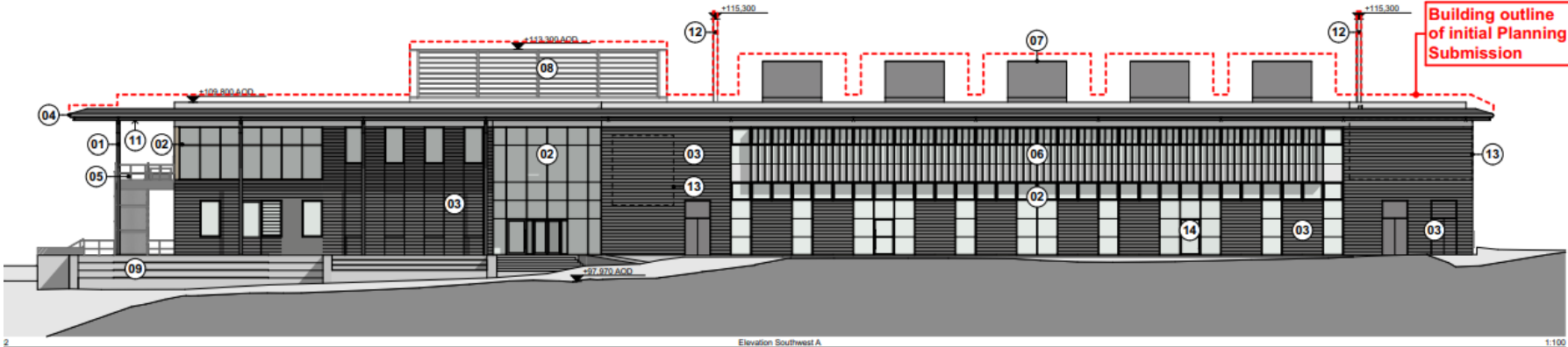


OXFORD  
CITY  
COUNCIL

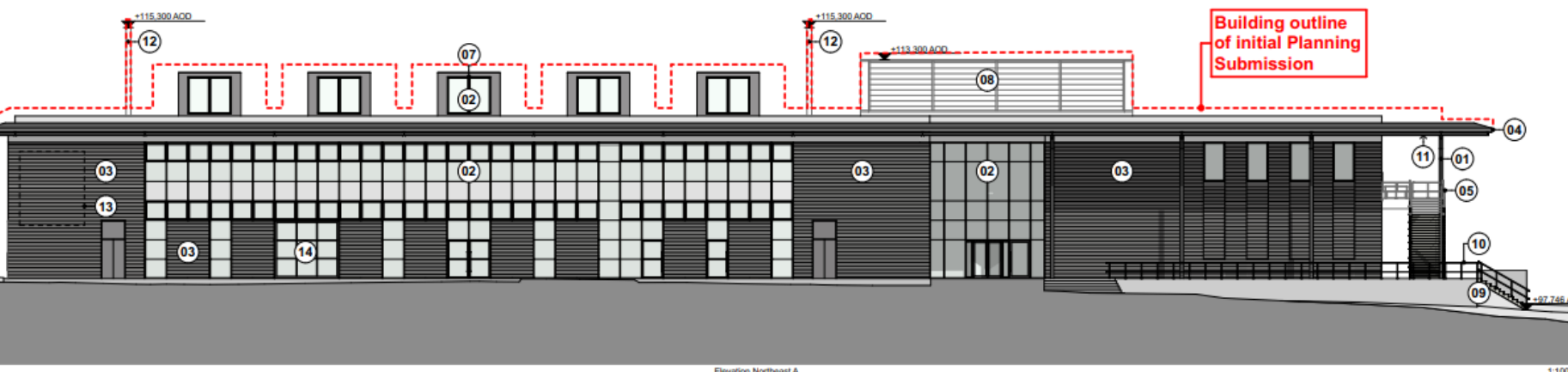




# Elevations as Approved



87





# Proposed Elevations



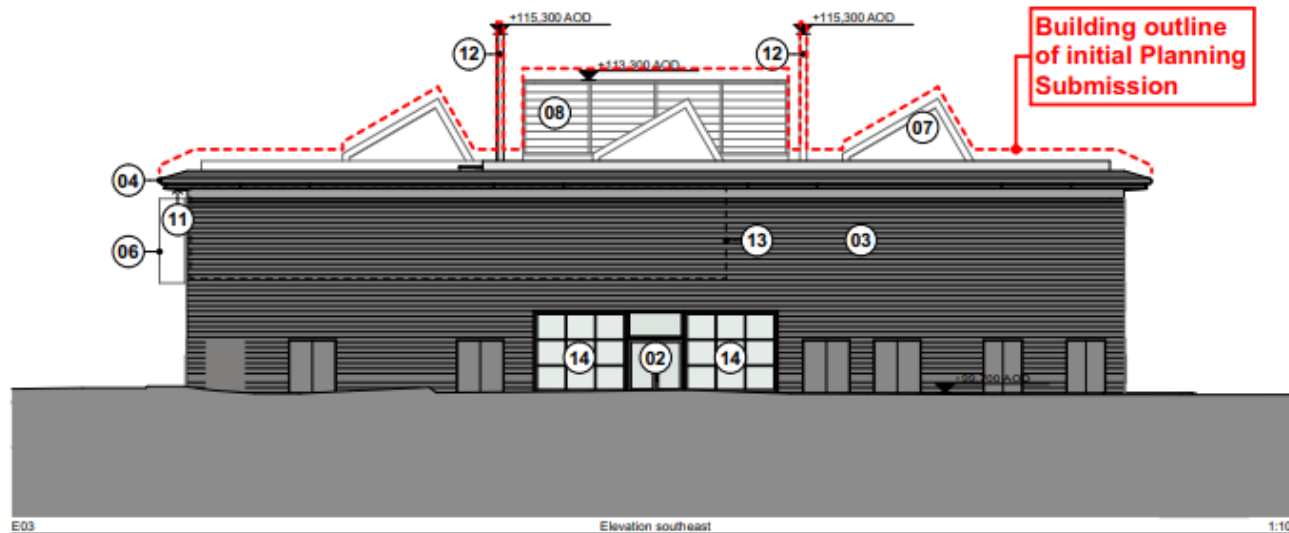
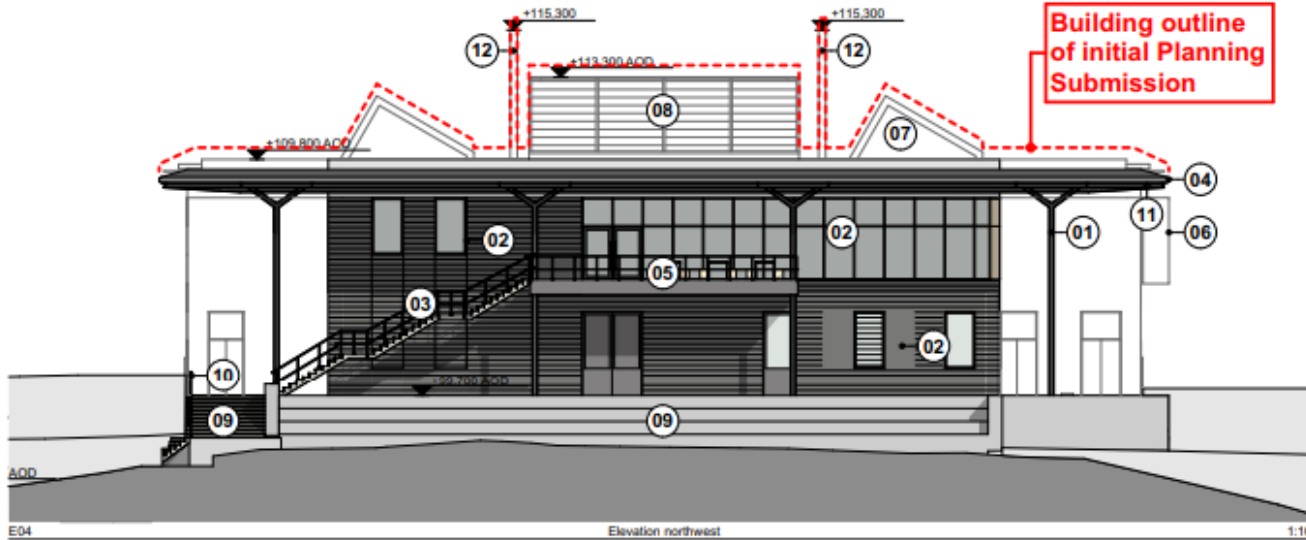
1 South West Elevation - Amended  
1:100



North East Elevation - Amended  
1:100

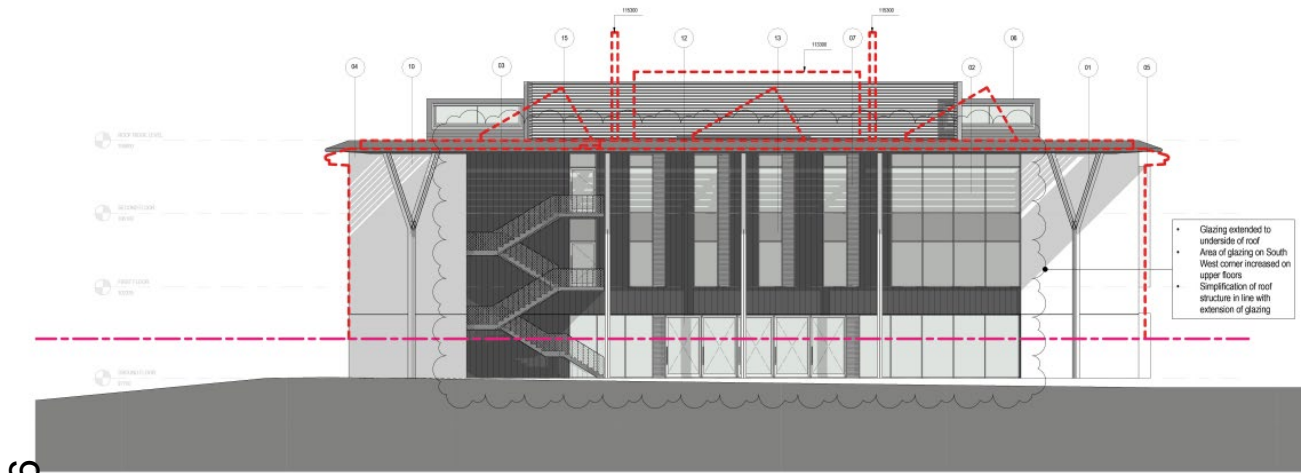
# Elevations as Approved

68





# Proposed Elevations



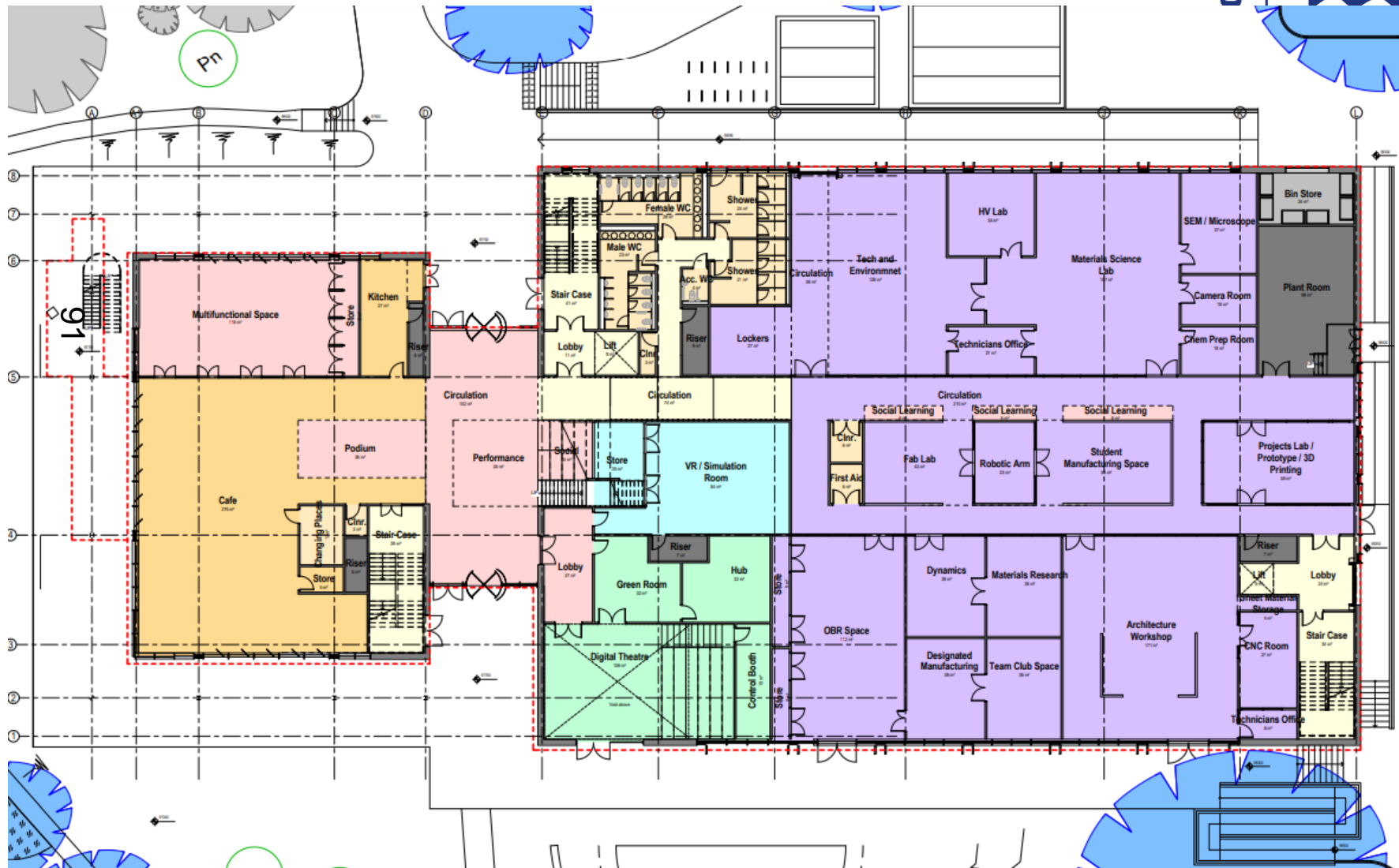
**06 North West Elevation - Amended**



**1 South East Elevation**  
1 : 100

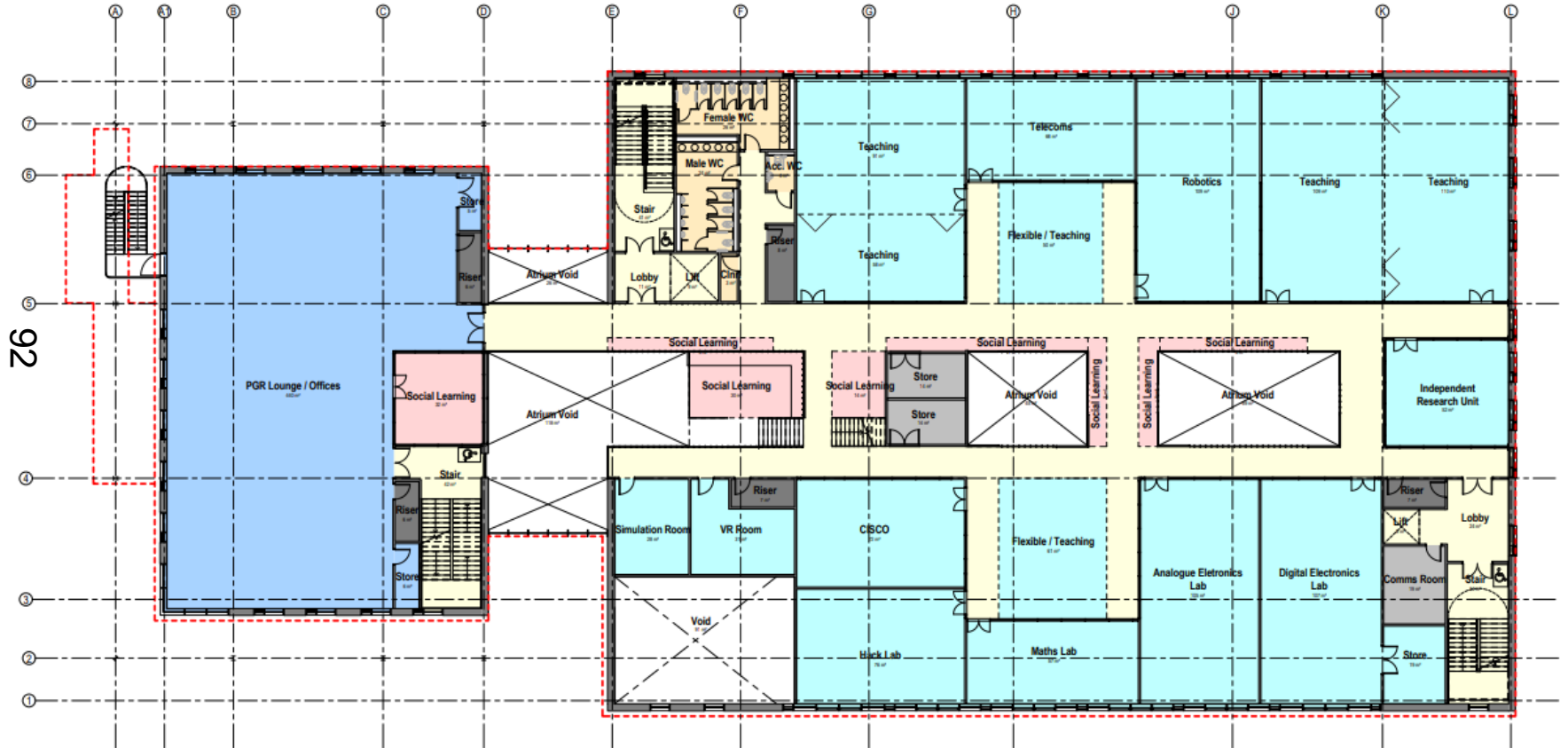


**ord.gov.uk**

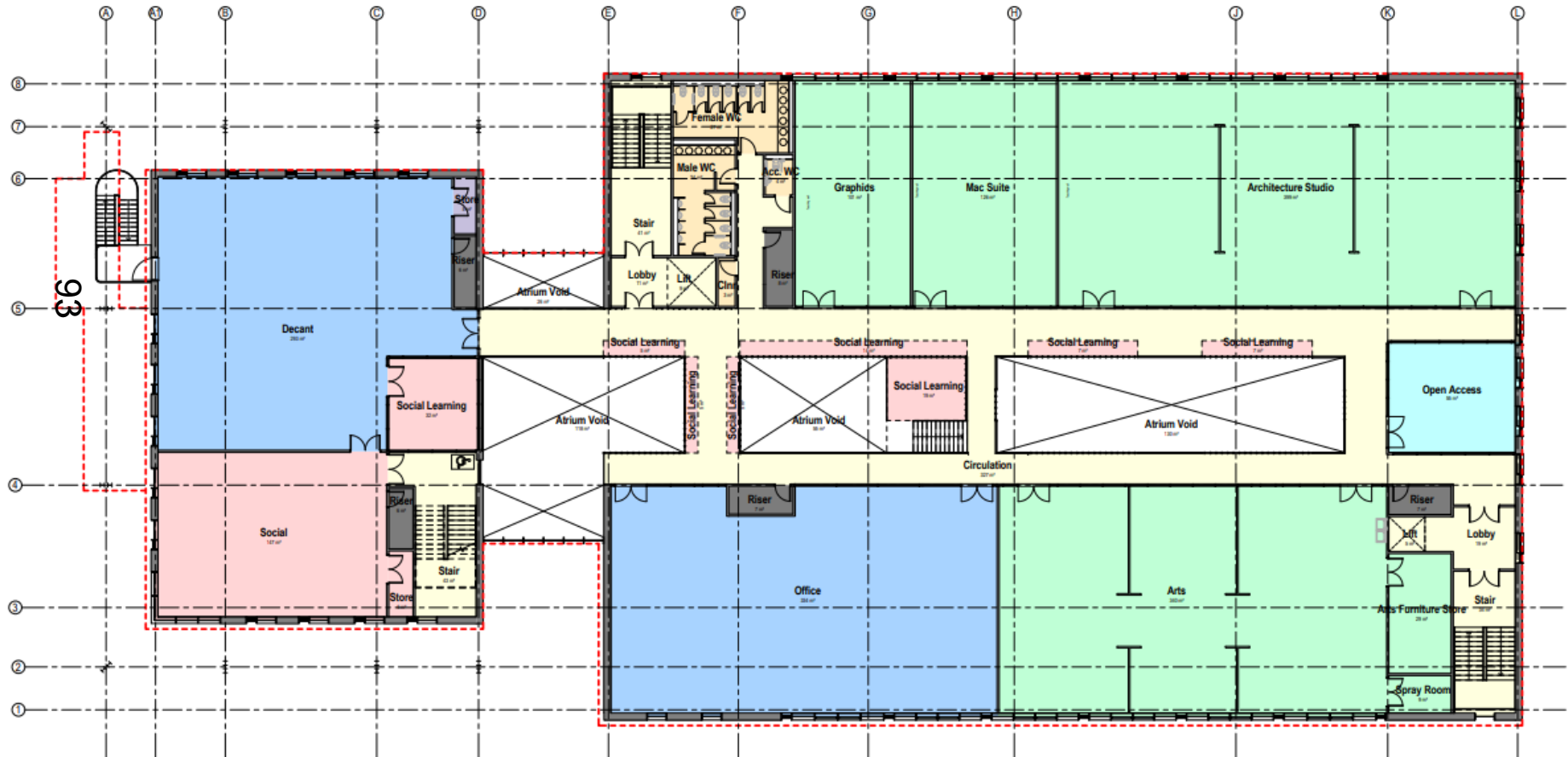




# First Floor Plans



# Second Floor Plans







# Oxford City Planning Committee Presentation

[www.oxford.gov.uk](http://www.oxford.gov.uk)



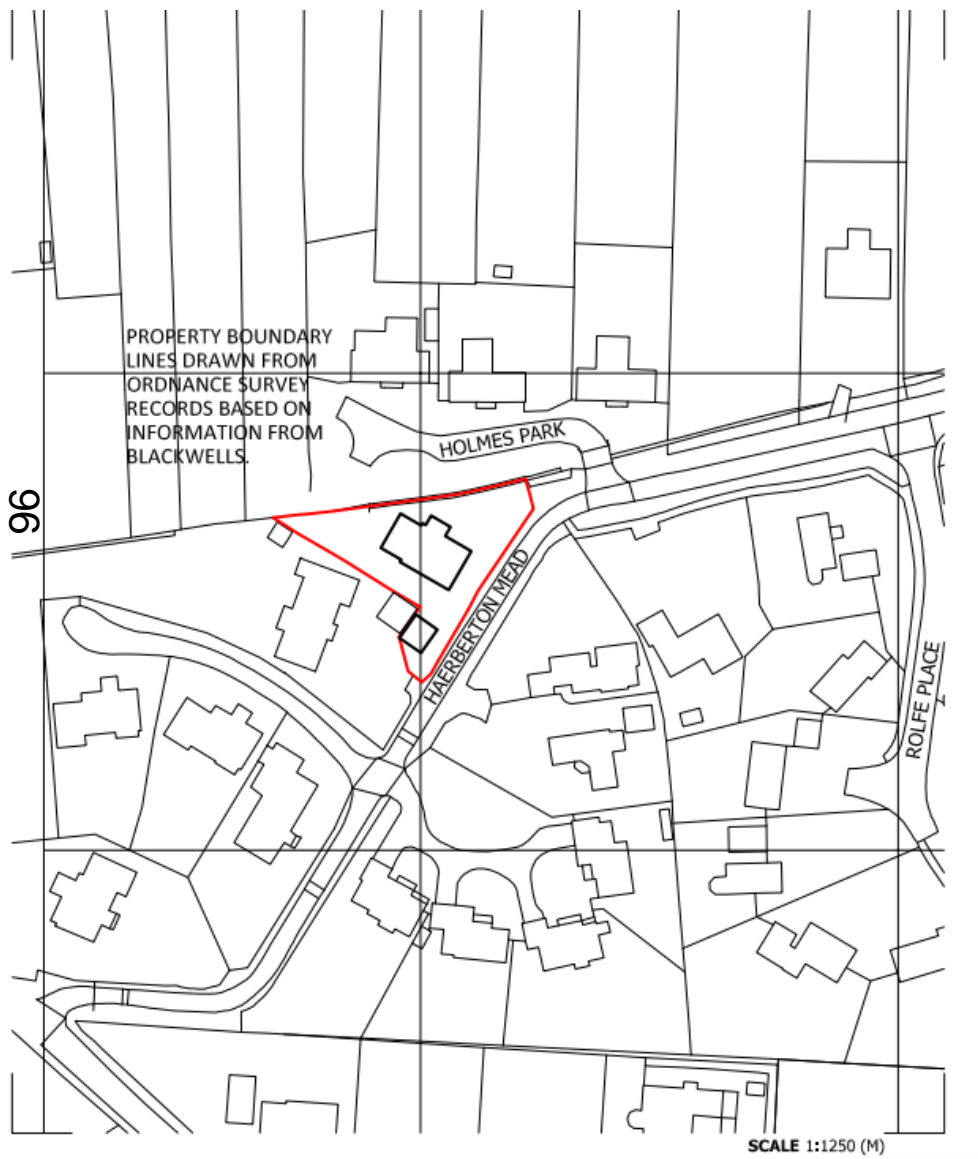
**Reference Number: 21/03241/FUL**

**Site Address: Julianstowe Cottage, 10  
Harberton Mead**





# Site Location Plan



[www.oxford.gov.uk](http://www.oxford.gov.uk)





[www.oxford.gov.uk](http://www.oxford.gov.uk)







[www.oxford.gov.uk](http://www.oxford.gov.uk)









[www.oxford.gov.uk](http://www.oxford.gov.uk)







[www.oxford.gov.uk](http://www.oxford.gov.uk)



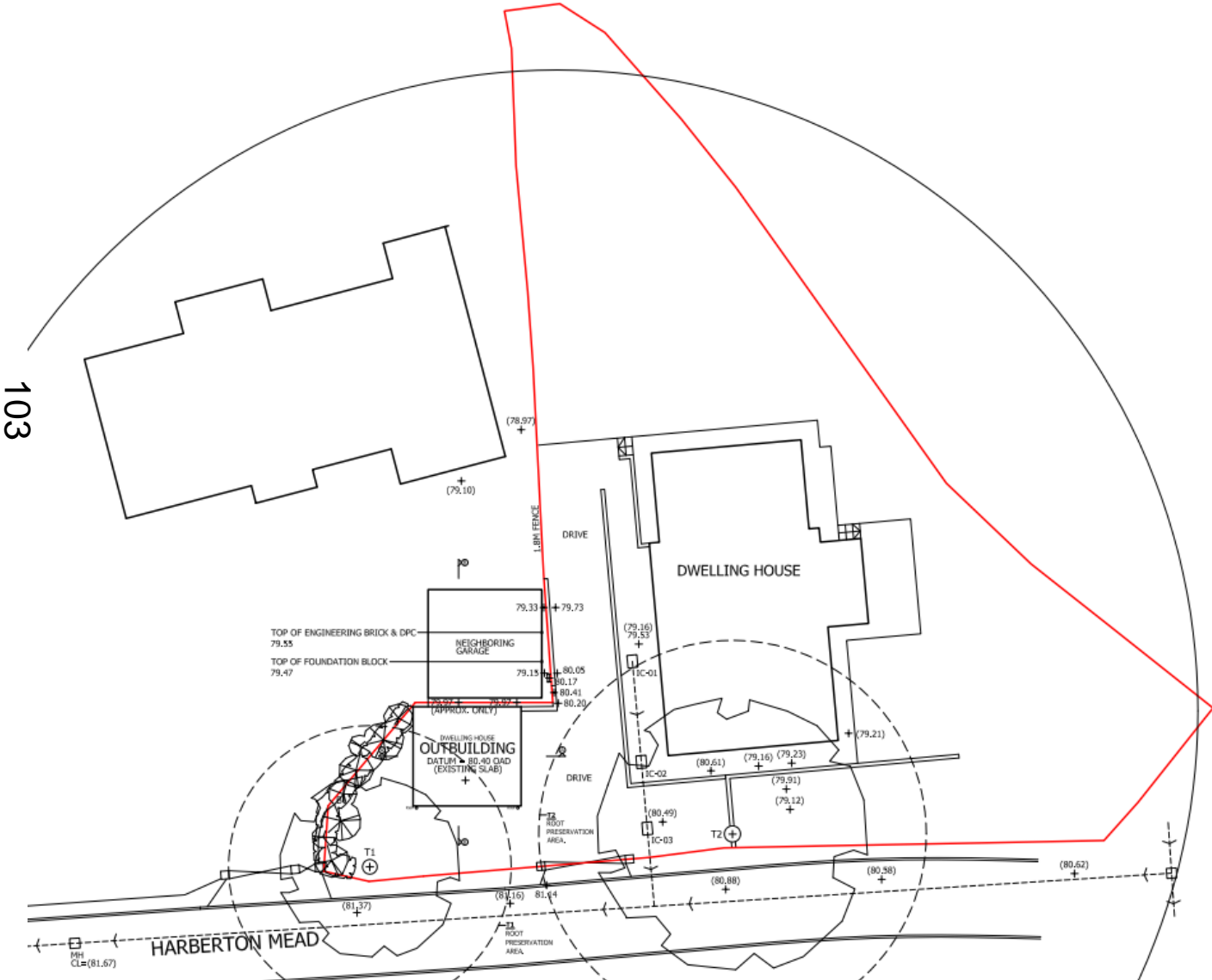




[www.oxford.gov.uk](http://www.oxford.gov.uk)

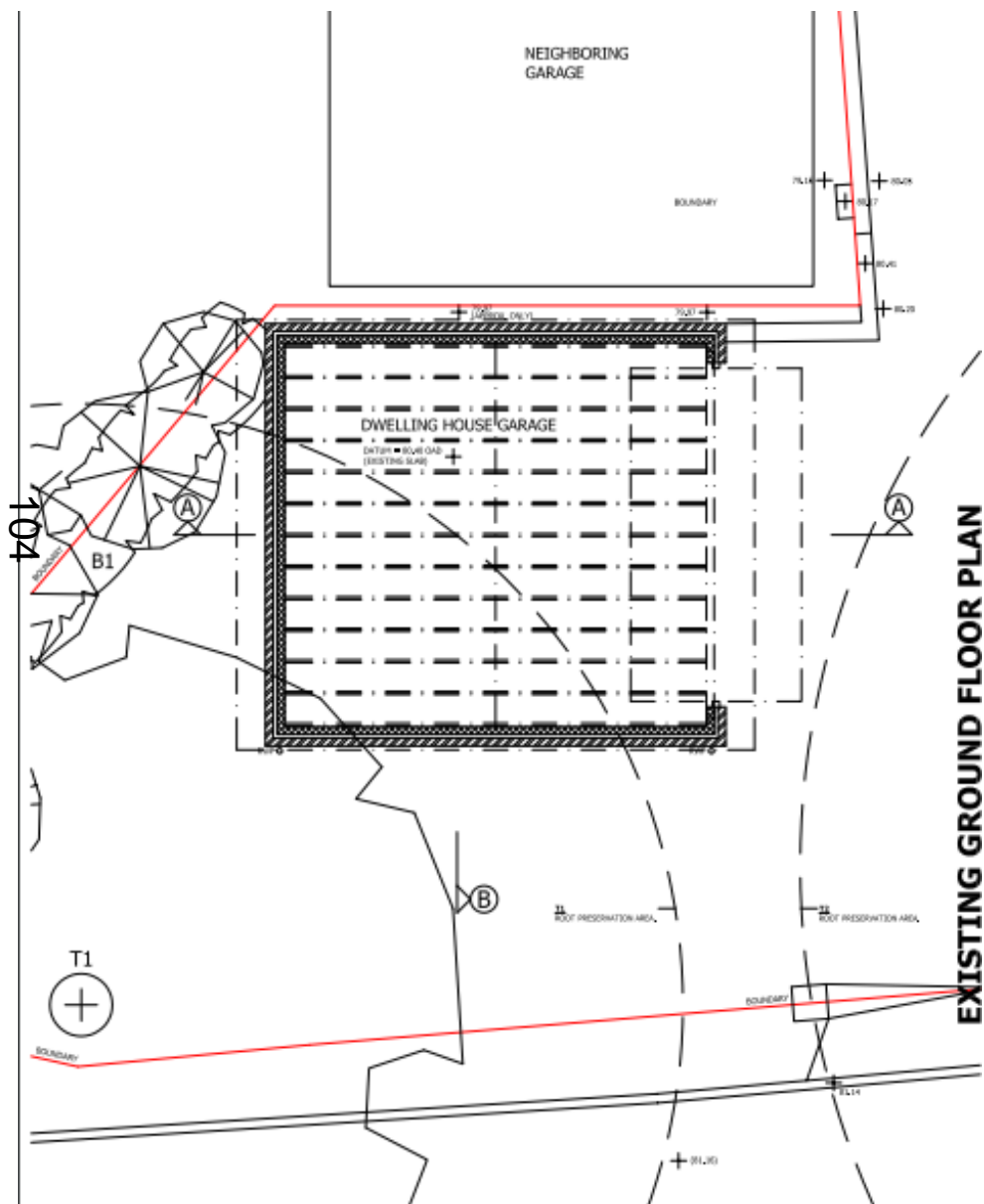


# Existing Site Plan



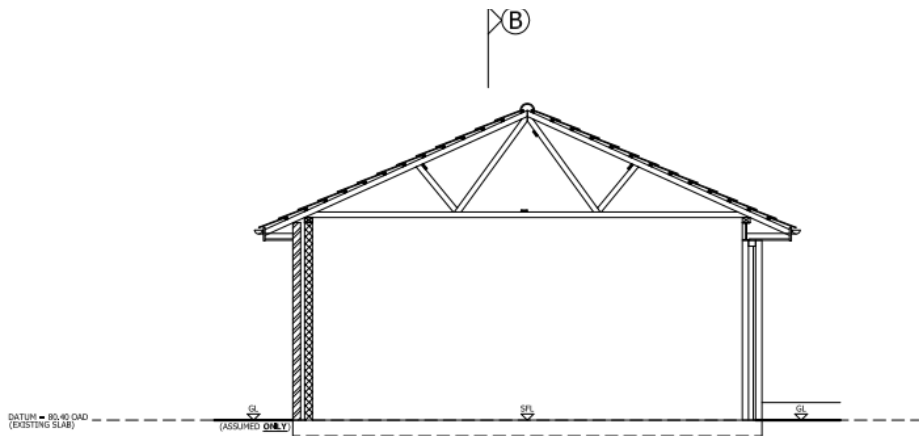


## 104



# Existing Sections

105



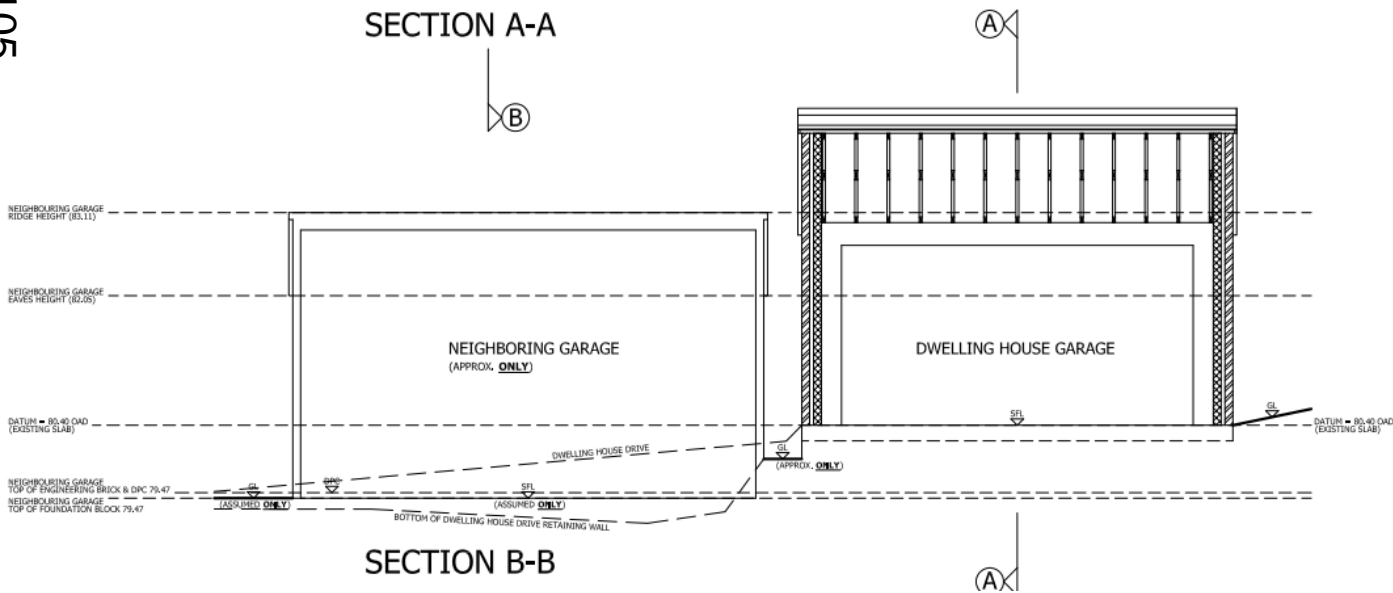
ANNOTATIONS KEY

LEVELS KEY

SFL SUB FLOOR LEVEL

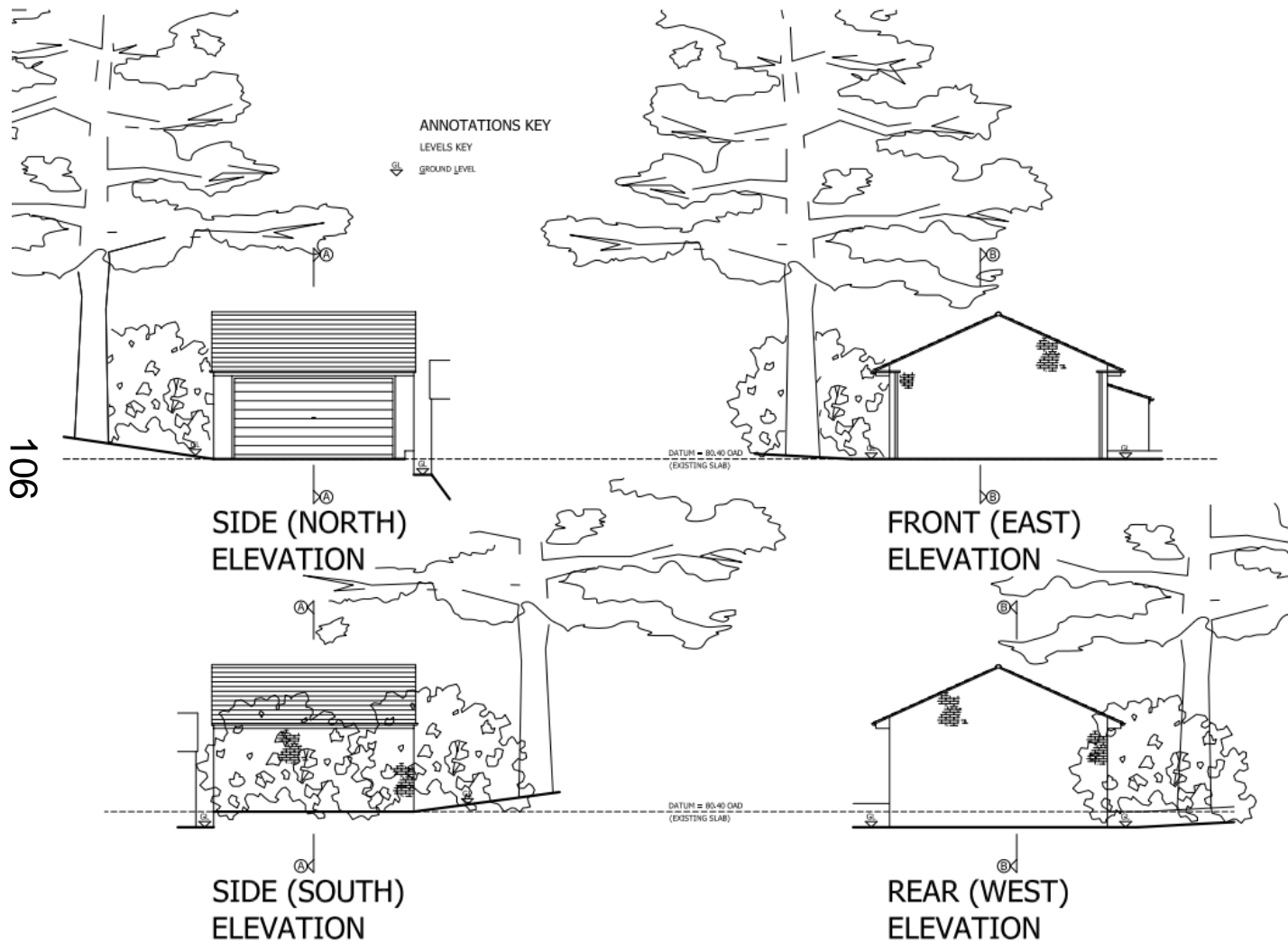
GL GROUND LEVEL

DPC DAMP PROOF COURSE





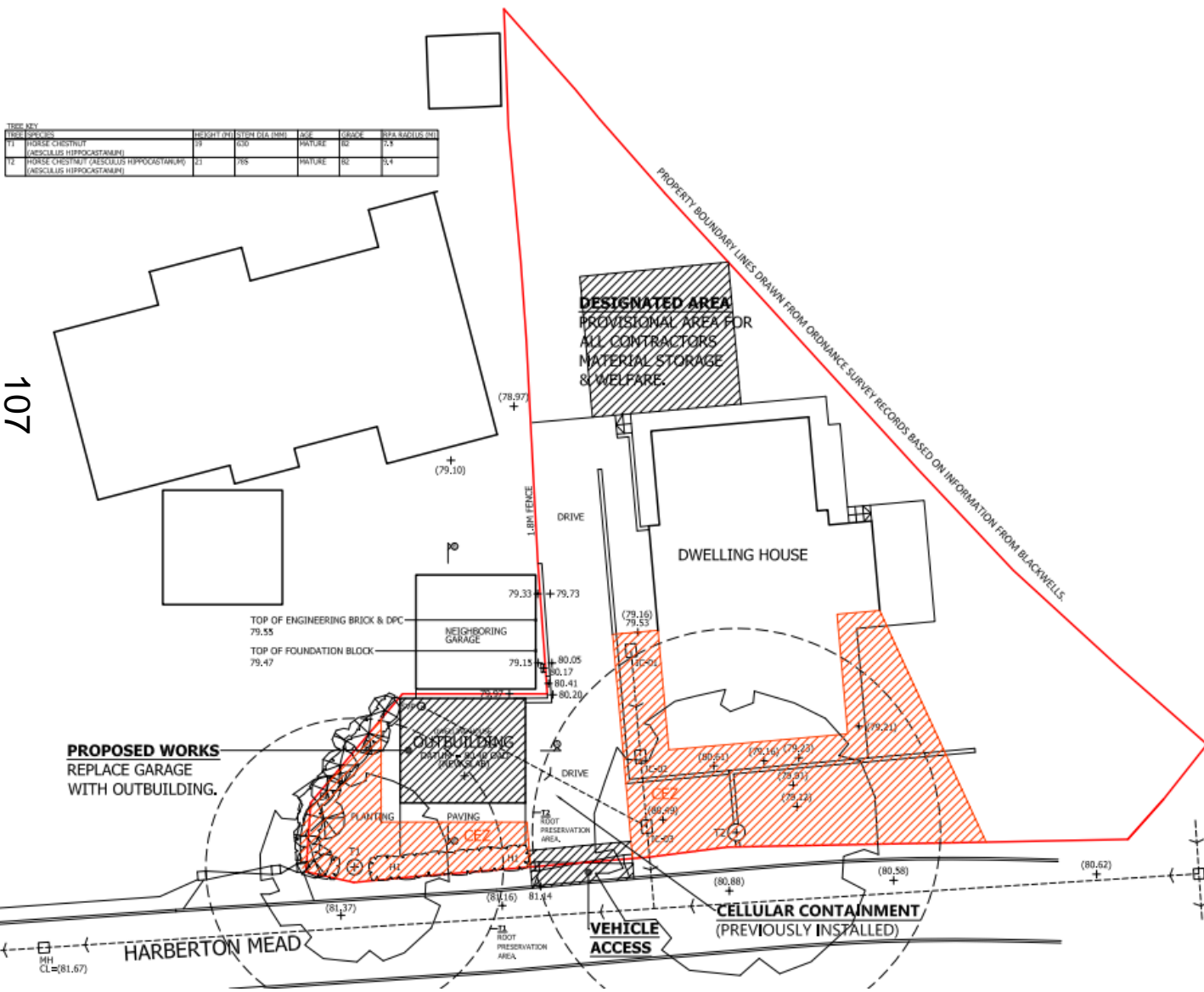
# Existing Elevations



# Proposed Site Plan

TREE KEY

TREE SPECIES	HUGHY (NO)	STPM DIA (MM)	AGE	GRADE	DATA RADIUS (M)
T1 HORSE CHESTNUT (AESCULUS HIPPOCASTANUM)	19	400	MATURE	02	12.5
T2 HORSE CHESTNUT (AESCULUS HIPPOCASTANUM) (AESCULUS HIPPOCASTANUM)	23	785	MATURE	02	25.4





The diagram is a detailed architectural floor plan of a proposed ground floor. The layout includes a central living area with a fireplace, a dining area with a table and chairs, a kitchen with a sink and stove, a bathroom (WC), a home gym, a home office, and a meeting area. The plan also shows a driveway, a paving area, and a root preservation area. Landscaping features include planting, a tree (T1), and a boundary line. The plan is labeled with various dimensions and room names.

**Rooms and Features:**

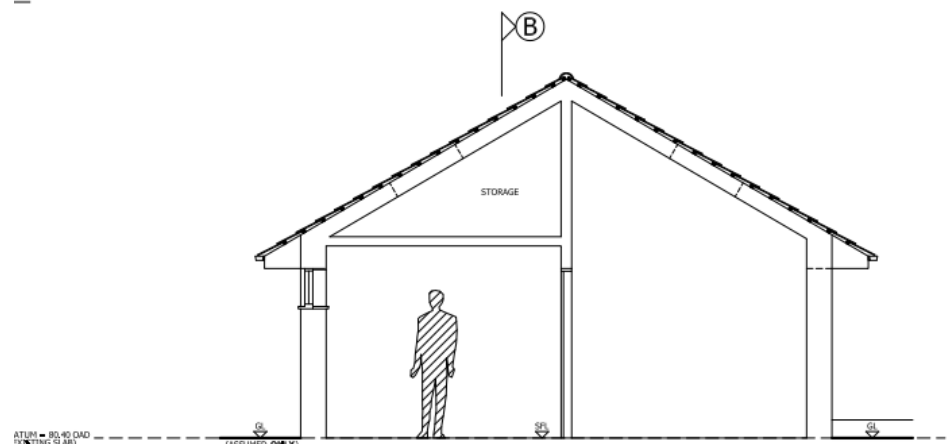
- NEIGHBORING GARAGE
- BOUNDARY
- 75.15
- 80.05
- 80.27
- 80.41
- 80.20
- 75.90
- 75.90 (INTERIOR ONLY)
- LEVEL THRESHOLD
- TO IC-03
- HOME GYM
- WC
- COATS
- KITCHENETTE
- MEETING AREA
- HOME OFFICE
- WORKSTATION AREA
- PLANTING
- PAVING
- ROOT PRESERVATION AREA
- DRIVE
- BOUNDARY
- 81.14
- 81.90

**Labels and Markers:**

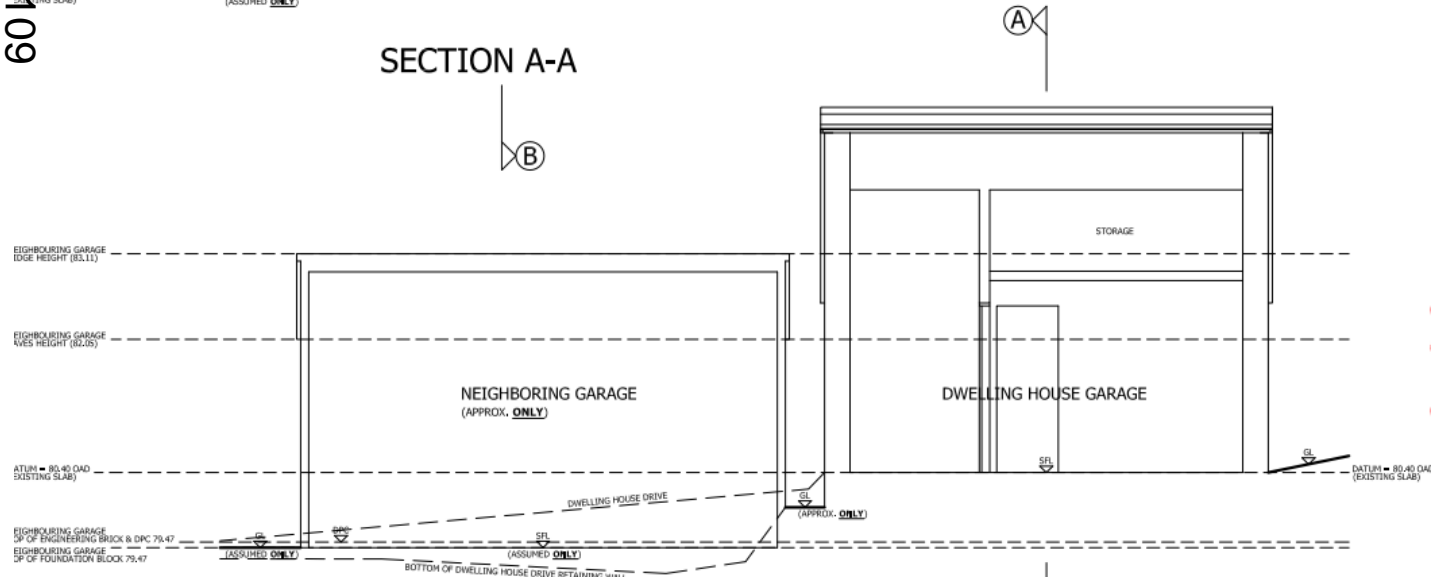
- A
- B1
- T1
- H1
- B



# Proposed Sections



SECTION A-A



SECTION B-B

ANNOTATIONS KEY  
LEVELS KEY  
SFL SUB FLOOR LEVEL  
GL GROUND LEVEL  
DPC DAMP PROOF COURSE

[www.oxford.gov.uk](http://www.oxford.gov.uk)





# Proposed Elevations

