

# Planning - Oxford City Planning Committee

On Tuesday 7 September 2021 At 6.00 pm

www.oxford.gov.uk



## Presentations

### Contents

**Note: Planning Committee presentations contain mostly pictures, maps and plans. These are not in an accessible format.**

To see full details of the application including full plans, representations, public comments and supplementary information, please [click here](#) and enter the relevant Planning Reference number in the search box

- |    |   |        |
|----|---|--------|
| 3. | 21/01989/FUL: 75 Langley Close, Oxford, OX3 7DB | 3 - 12 |
|----|---|--------|

The agenda, reports and any additional supplements can be found together with this supplement on the committee meeting webpage.

*View or subscribe to updates for agendas, reports and minutes at [mycouncil.oxford.gov.uk](http://mycouncil.oxford.gov.uk).  
All public papers are available from the calendar link to this meeting once published*

*Oxford City Council, Town Hall, St Aldate's Oxford OX1 1BX*

This page is intentionally left blank

# Oxford City Planning Committee Presentation

Reference Number: 21/01989/FUL

3

Site Address: 75 Langley Close

[www.oxford.gov.uk](http://www.oxford.gov.uk)

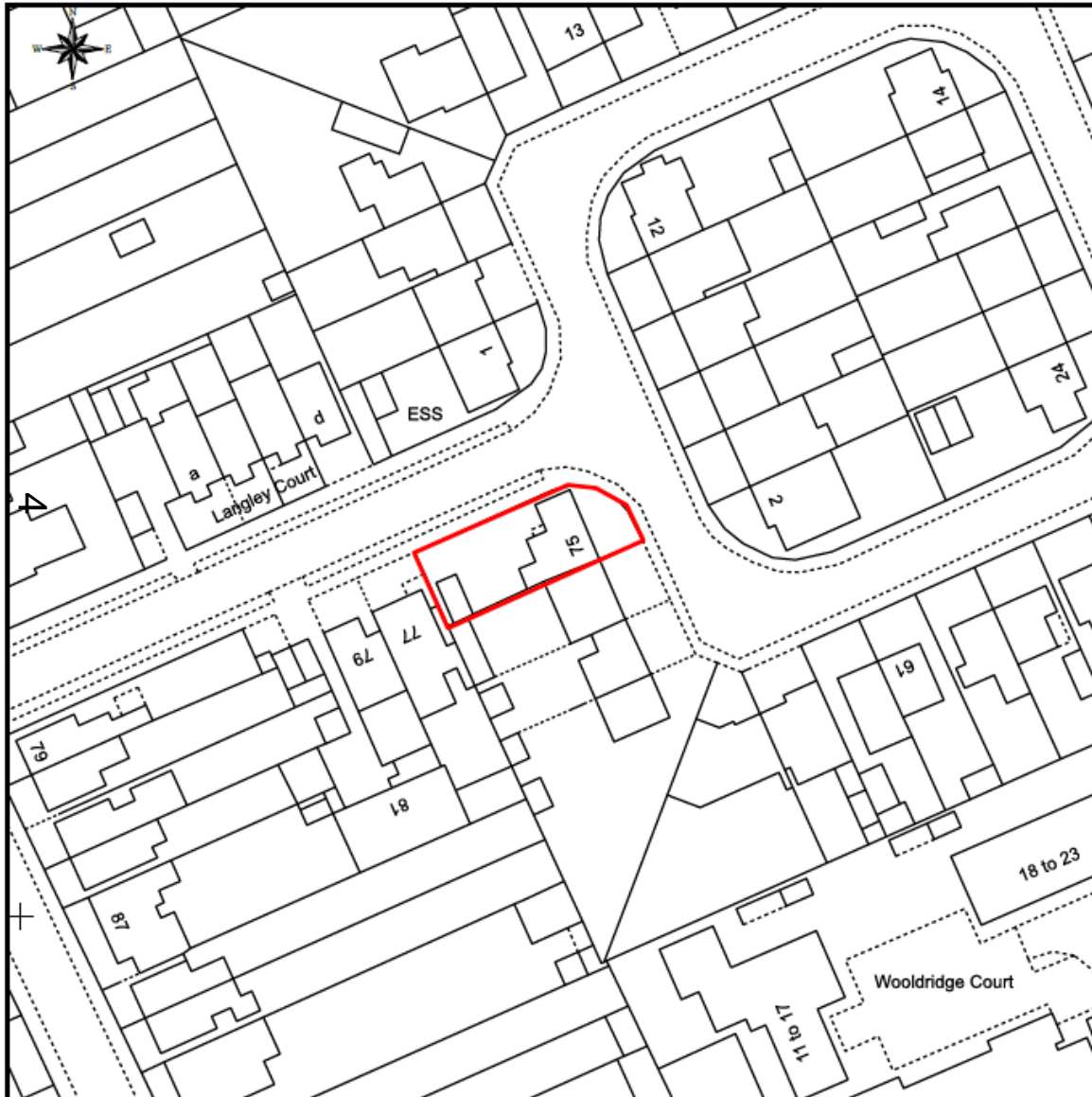


**OXFORD  
CITY  
COUNCIL**



Agenda Item 3

# Site Location Plan



[www.oxford.gov.uk](http://www.oxford.gov.uk)



**OXFORD  
CITY  
COUNCIL**





[www.oxford.gov.uk](http://www.oxford.gov.uk)





9

[www.oxford.gov.uk](http://www.oxford.gov.uk)



**OXFORD  
CITY  
COUNCIL**





[www.oxford.gov.uk](http://www.oxford.gov.uk)



**OXFORD  
CITY  
COUNCIL**





[www.oxford.gov.uk](http://www.oxford.gov.uk)







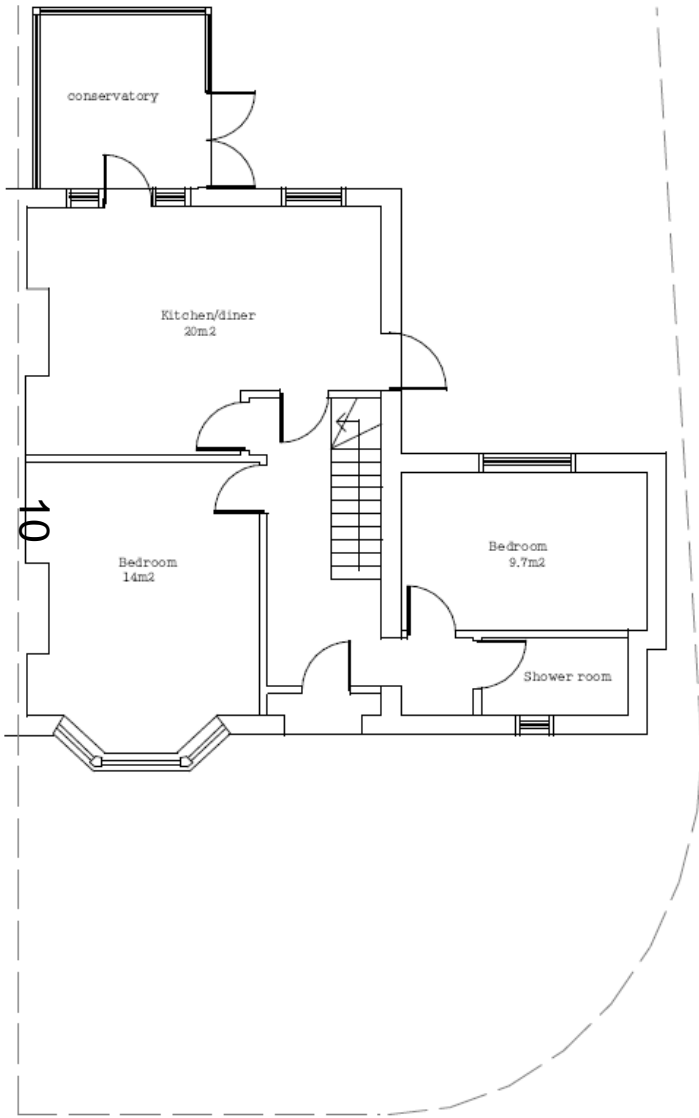
[www.oxford.gov.uk](http://www.oxford.gov.uk)



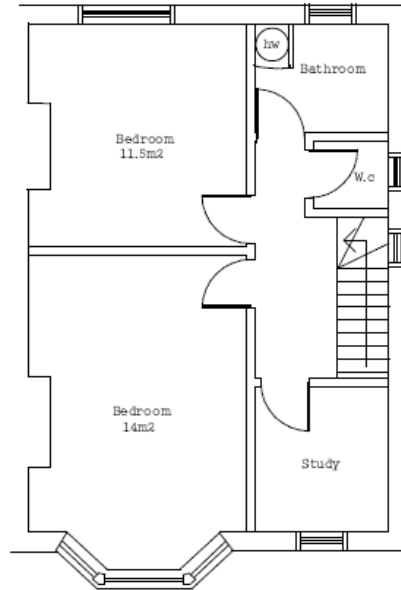
**OXFORD  
CITY  
COUNCIL**



# Existing Plans



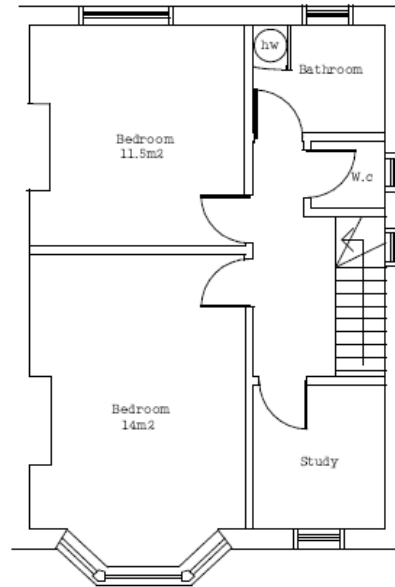
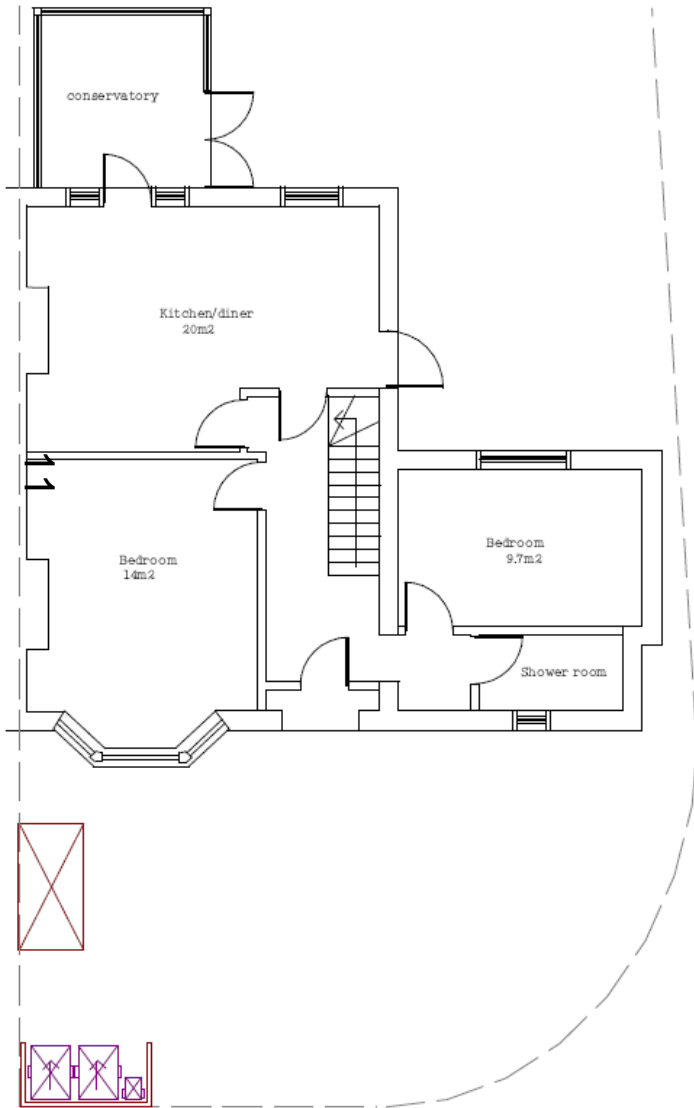
Existing ground floor



Existing 1st floor

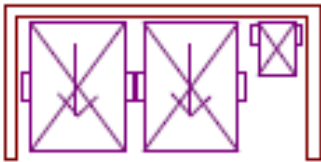


# Proposed Plans

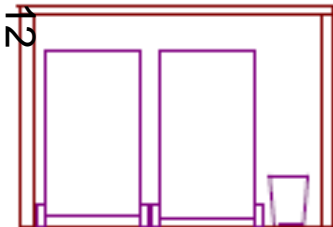


# Proposed Bin and Bicycle Stores

PLAN



FRONT



BACK



BIN STORE

SIDE



SIDE



'Access' bike shed (for four bikes)

PLAN

