

# Planning - Oxford City Planning Committee

On **Tuesday 10 August 2021** At **6.00 pm**

www.oxford.gov.uk



## Presentations

### Contents

**Note: Planning Committee presentations contain mostly pictures, maps and plans. These are not in an accessible format.**

To see full details of the application including full plans, representations, public comments and supplementary information, please [click here](#) and enter the relevant Planning Reference number in the search box

3.	<b>21/01053/RES: Oxford North (Northern Gateway) Land Adjacent To A44, A40, A34 And Wolvercote Roundabout, Northern By-Pass Road, Wolvercote, Oxford, OX2 8JR</b>	3 - 14
4.	<b>21/01495/FUL: 65 Owens Way, Oxford, OX4 2GG</b>	15 - 22
5.	<b>19/02816/FUL: Land Between 45 And 51 Hill Top Road, Oxford, Oxfordshire</b>	23 - 44

The agenda, reports and any additional supplements can be found together with this supplement on the committee meeting webpage.

*View or subscribe to updates for agendas, reports and minutes at [mycouncil.oxford.gov.uk](https://mycouncil.oxford.gov.uk).  
All public papers are available from the calendar link to this meeting once published*

*Oxford City Council, Town Hall, St Aldate's Oxford OX1 1BX*

This page is intentionally left blank

# Oxford City Planning Committee Presentation

[www.oxford.gov.uk](http://www.oxford.gov.uk)



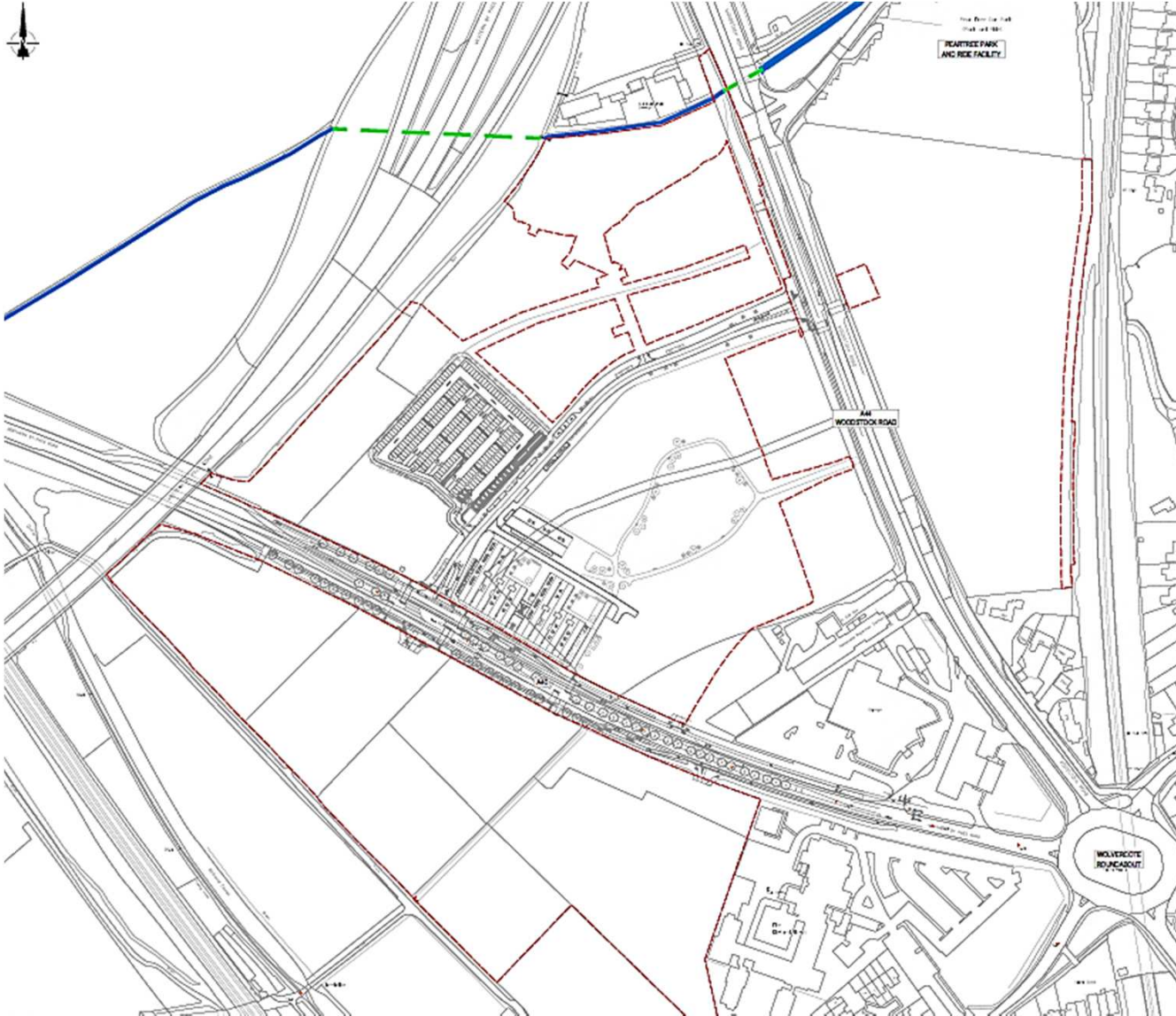
**Reference Number: 21/01053/RES**

**Site Address:**

**Oxford North (Northern Gateway)  
Land Adjacent To A44, A40, A34 And  
Wolvercote Roundabout  
Northern By-Pass Road  
Wolvercote**



# Location Plan





# Canalside Parcel – South of A40

oxford.gov.uk



5





# Canalside from Joe Whites Lane

rd.gov.uk





# Central Parcel from A44

ord.gov.uk





# 18/02065/OUTFUL - Masterplan

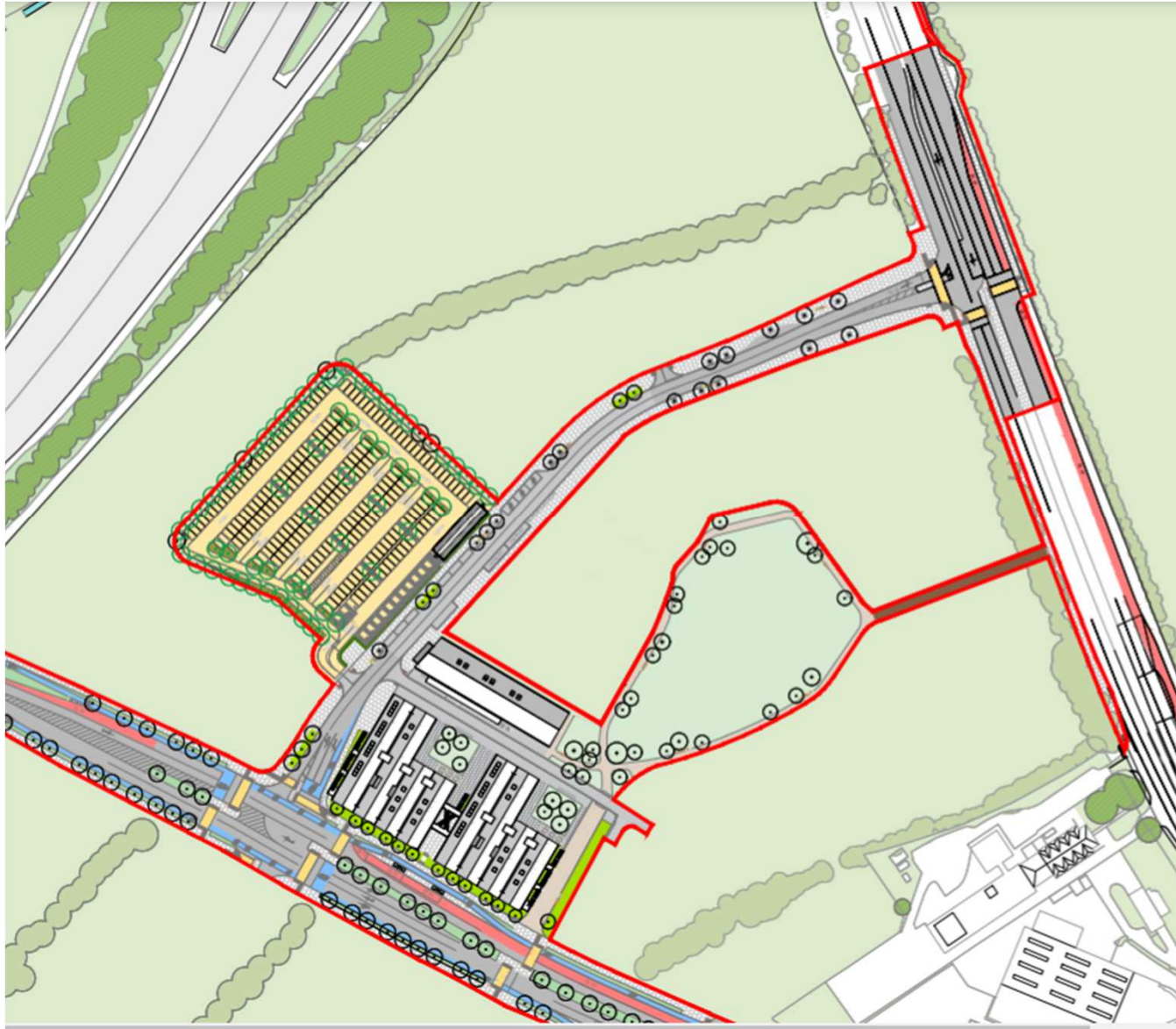


[www.oxford.gov.uk](http://www.oxford.gov.uk)





# Oxford North - Approved Employment, parking and link road



[www.oxford.gov.uk](http://www.oxford.gov.uk)



# Earthworks – Cut and Fill Level Changes

10

SURFACE LEVEL DATA			
No.	MIN. LEVEL	MAX. LEVEL	COLOUR
1	-8.00	-7.50	■
2	-7.50	-7.00	■
3	-7.00	-6.50	■
4	-6.50	-6.00	■
5	-6.00	-5.50	■
6	-5.50	-5.00	■
7	-5.00	-4.50	■
8	-4.50	-4.00	■
9	-4.00	-3.50	■
10	-3.50	-3.00	■
11	-3.00	-2.50	■
12	-2.50	-2.00	■
13	-2.00	-1.50	■
14	-1.50	-1.00	■
15	-1.00	-0.50	■
16	-0.50	0.00	■
17	0.00	0.50	■
18	0.50	1.00	■
19	1.00	1.50	■
20	1.50	2.00	■
21	2.00	2.50	■
22	2.50	3.00	■
23	3.00	3.50	■









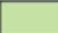

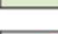




# Landscape Plan

11



oxford.gov.uk

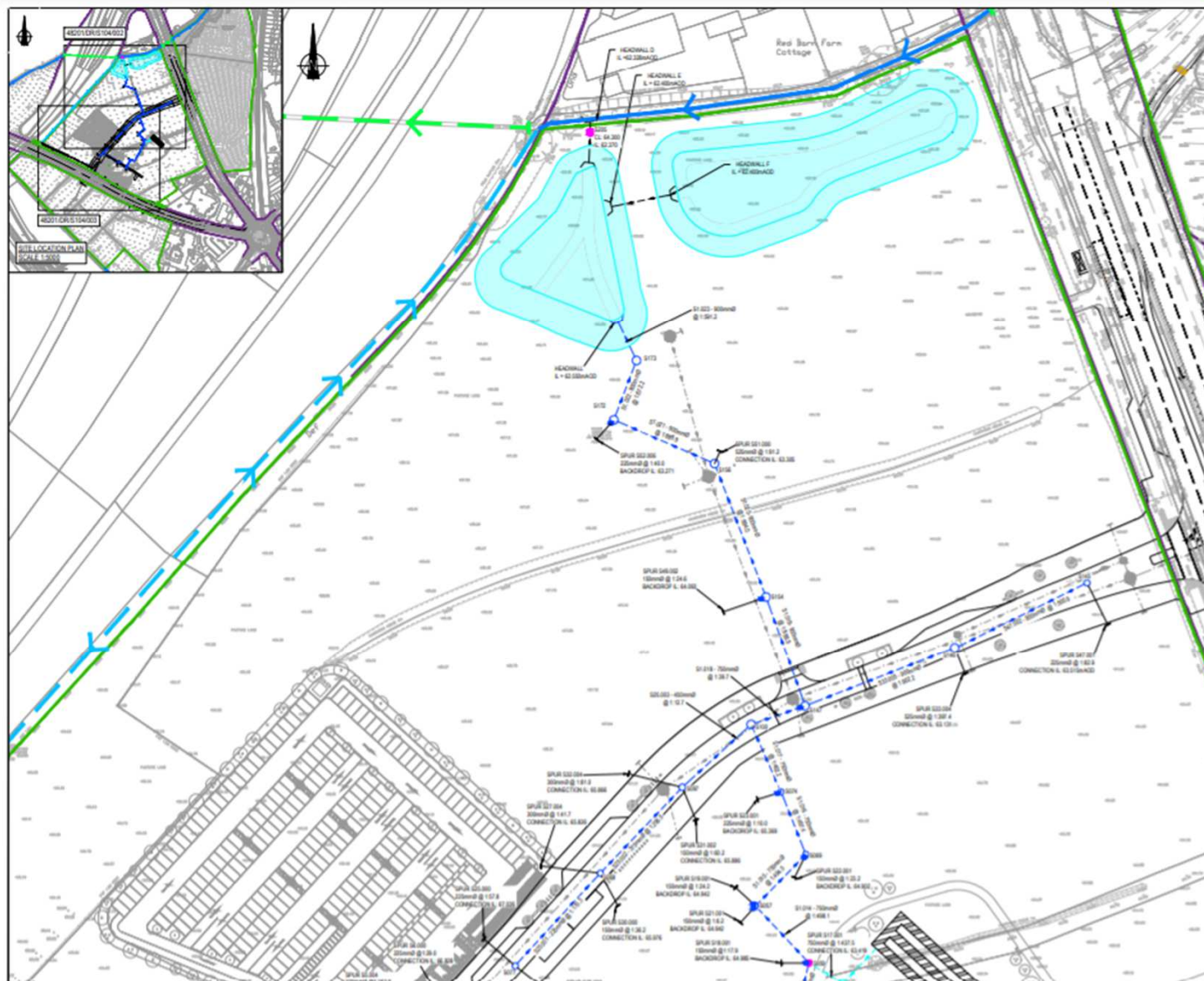


-  PROPOSED TREES
-  EARTHWORKS RESERVED MATTERS SUBMISSION BOUNDARY
-  PROPOSED LANDSCAPE LEVELS BY STANTEC
-  PROPOSED LANDSCAPE CONTOUR LINES BY STANTEC
-  PROPOSED AMENITY GRASS MIX
-  PROPOSED WETLAND GRASS
-  TEMPORARY GRASS
-  PERMANENT WET AREA
-  PROPOSED BUFF COLOUR HOGGINS 3mm-6mm AGGREGATE SIZE BY CED OR EQUAL AND APPROVED
-  MAXIMUM WATER LEVEL
-  PROPOSED HEDGE 2 ROWS AT 300mm C/C
- SPECIES**
  - 10% CRATAEGUS MONOGYNA (HAWTHORNE)
  - 10% ACER CAMPESTRE (FIELD MAPLE)
  - 10% SAMBUCUS NIGRA (ELDER)
  - 10% LIGUSTRUM SP (PRIVET)
  - 10% CORYLUS AVELLANA (HAZEL)
  - 15% CORNUS KOUSA (DOGWOOD)
  - 15% ROSA CANINA (DOG ROSE)
  - 10% VIBURNUM LANTANA (WAYFARING ROSE)
  - 10% VIBURNUM OPULUS (GUelder ROSE)
- DENSITY:**  
2 ROWS OF WHIP PLANTING 1M APART, PLANTING IN EACH ROW AT 300MM CENTRES.
-  PHASE 1A REFER TO DRAWINGS TOWN&C2.01(04)3000
-  EXISTING HEDGEROWS TO BE REMOVED AS PART OF A PRIOR CONSENT



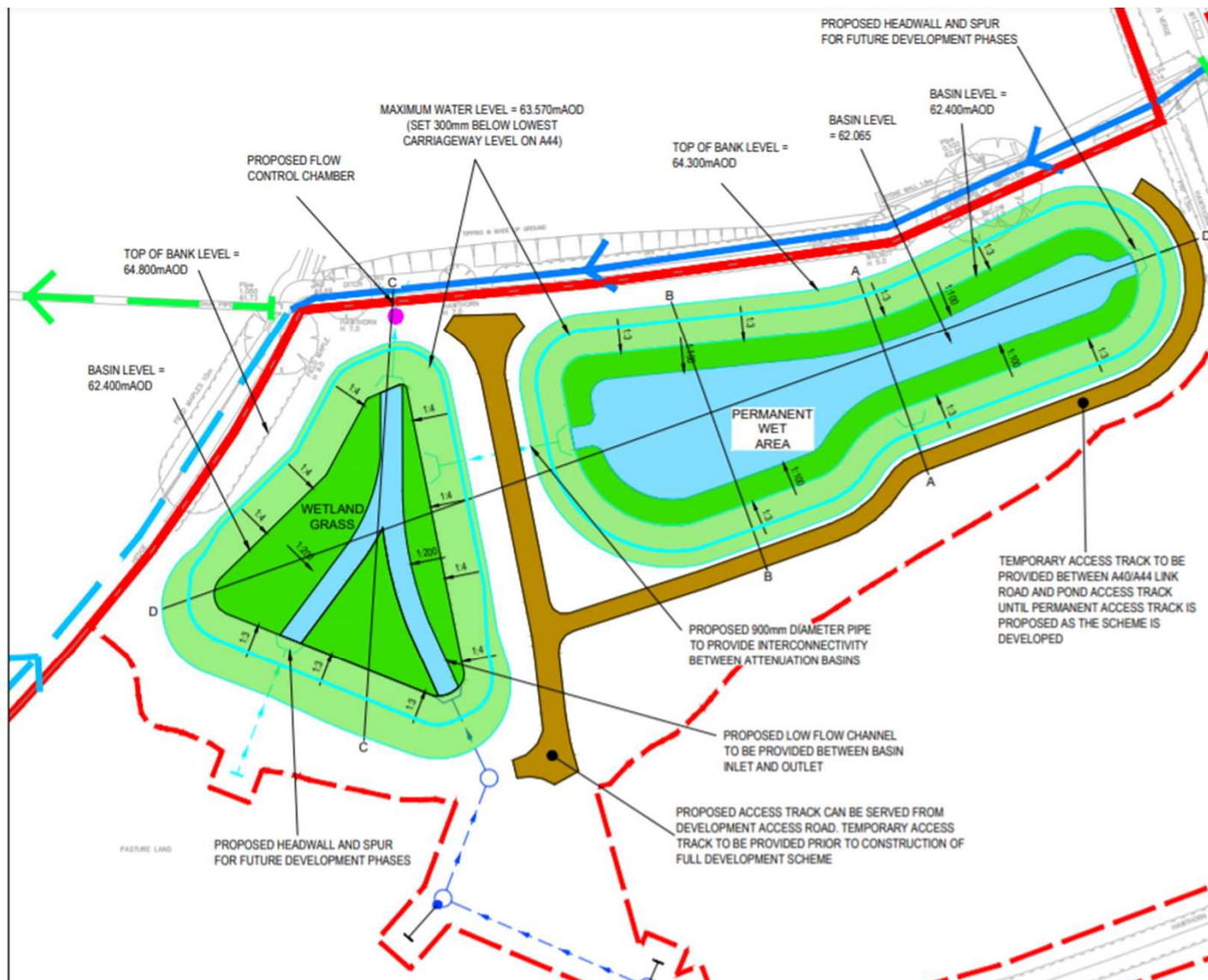
# Surface Water Drainage – Central Parcel

www.oxford.gov.uk



# Attenuation Ponds

13



[www.oxford.gov.uk](http://www.oxford.gov.uk)



This page is intentionally left blank

# Oxford City Planning Committee Presentation

21/01495/FUL

65 Owens Way

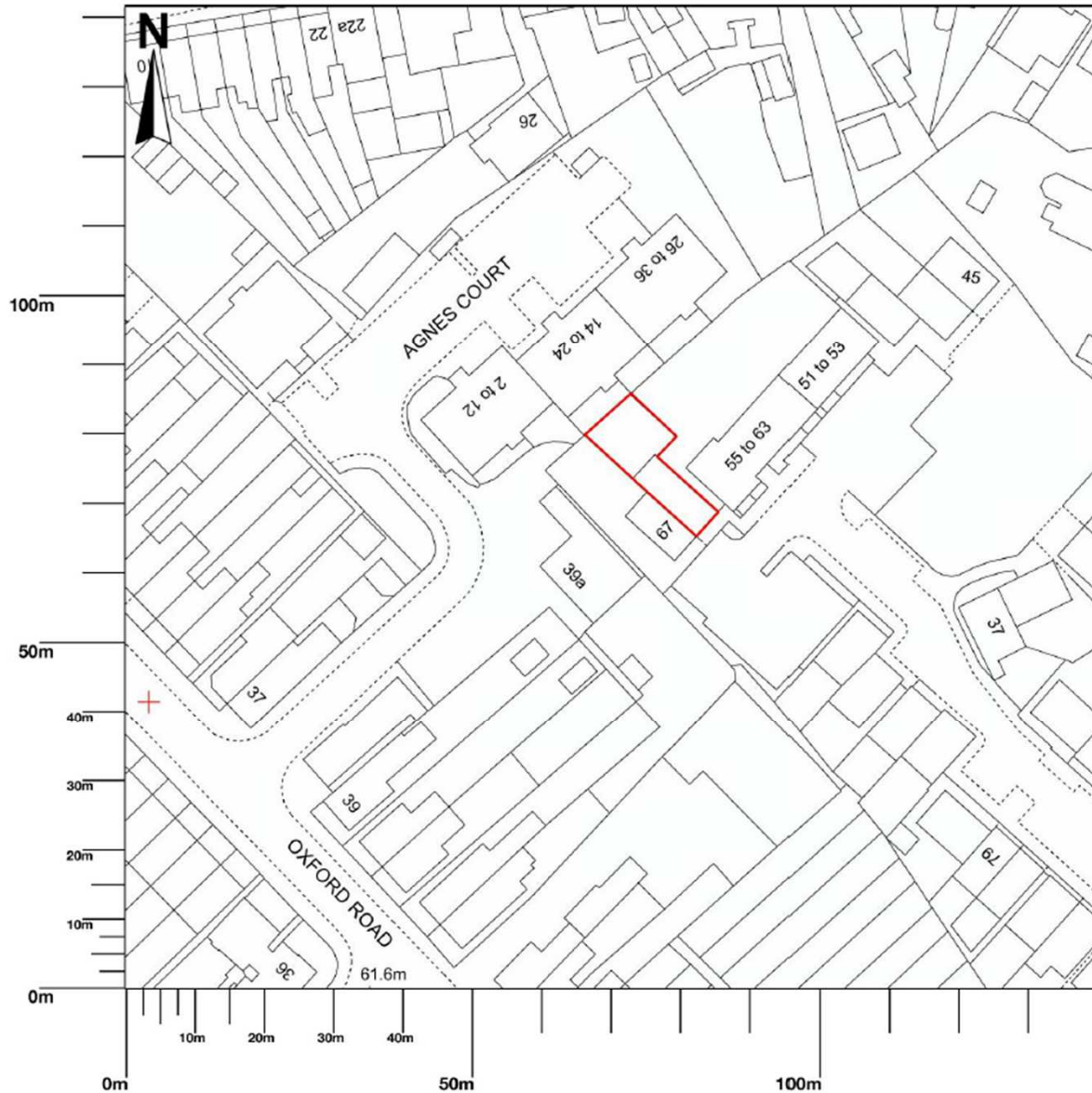
15

[www.oxford.gov.uk](http://www.oxford.gov.uk)





# Site Location Plan



[www.oxford.gov.uk](http://www.oxford.gov.uk)



## View from South West



[www.oxford.gov.uk](http://www.oxford.gov.uk)



# View from West



[www.oxford.gov.uk](http://www.oxford.gov.uk)





## View to South West (Site behind)

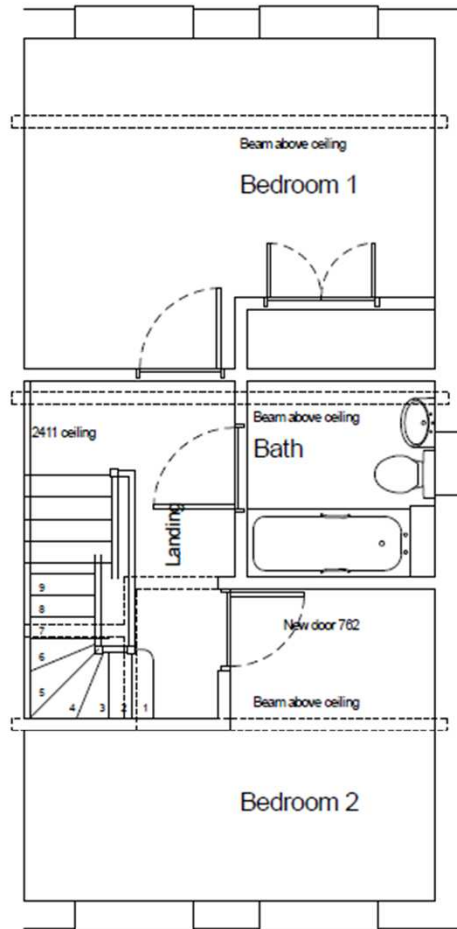


[www.oxford.gov.uk](http://www.oxford.gov.uk)

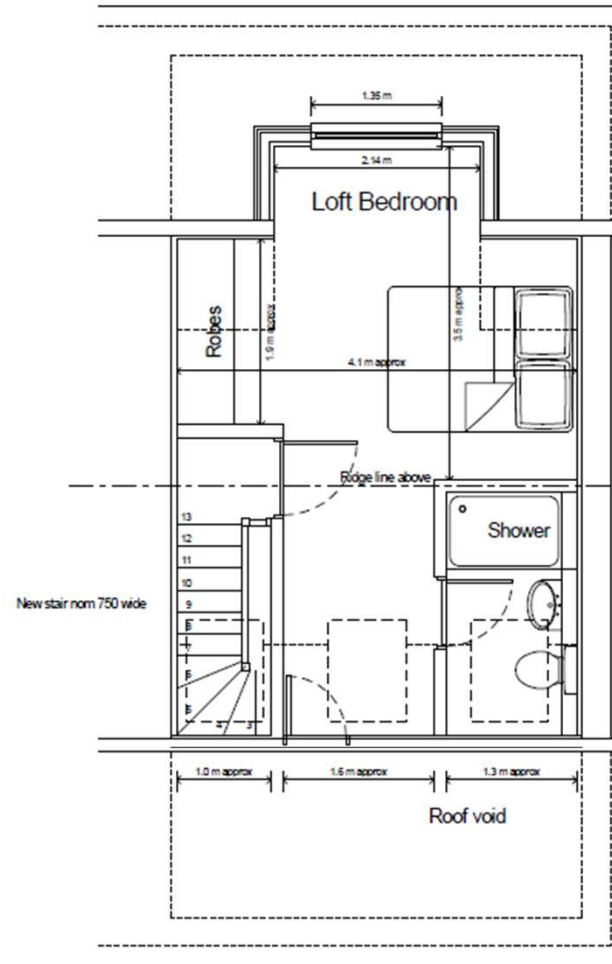


# Proposed Floor Plans

20



Outline Proposal - First Floor - Scale 1:50

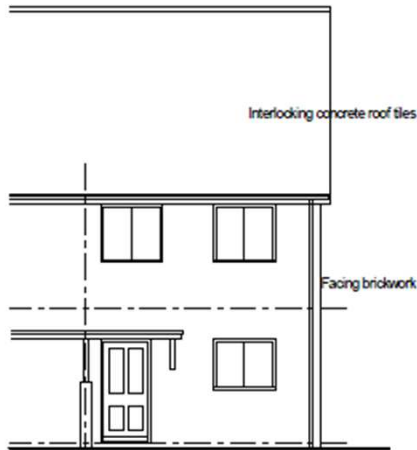


Loft Floor - Scale 1:50

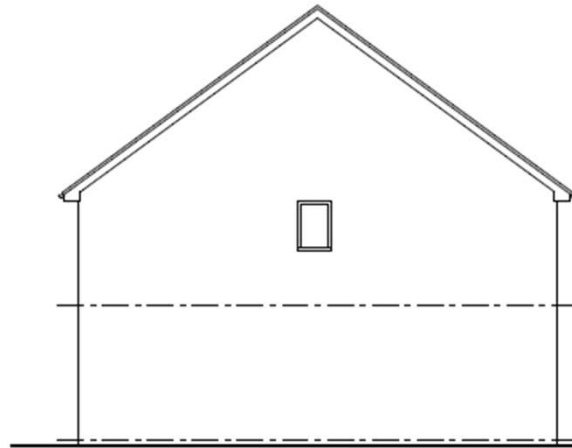
[www.oxford.gov.uk](http://www.oxford.gov.uk)



# Existing Elevations



Front (South-East) Elevation



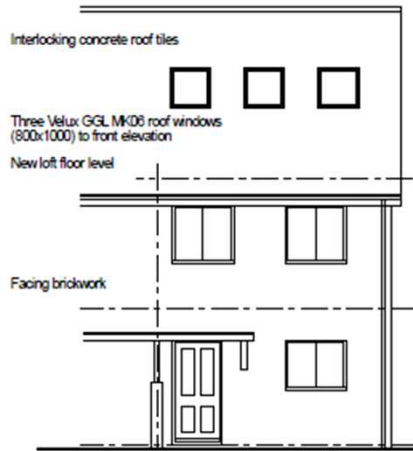
Side (North-East) Elevation



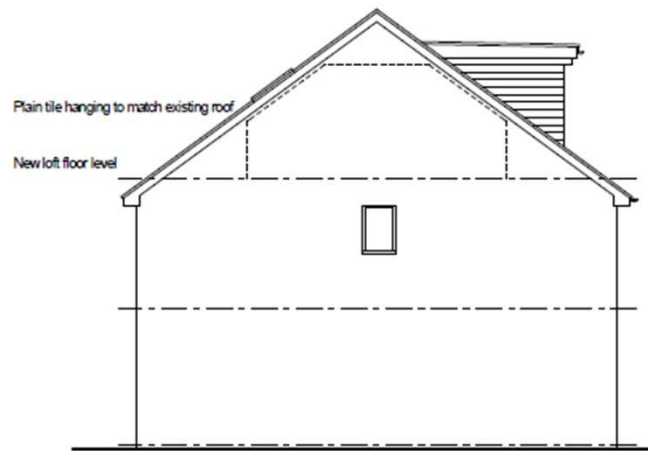
Rear (North-West) Elevation



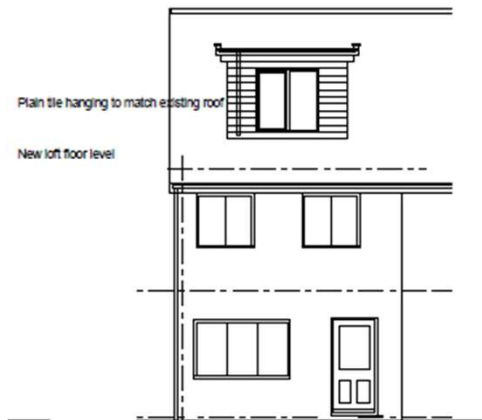
# Proposed Elevations



Front (South-East) Elevation



Side (North-East) Elevation



Rear (North-West) Elevation



# West Area Planning Committee Presentation

[www.oxford.gov.uk](http://www.oxford.gov.uk)



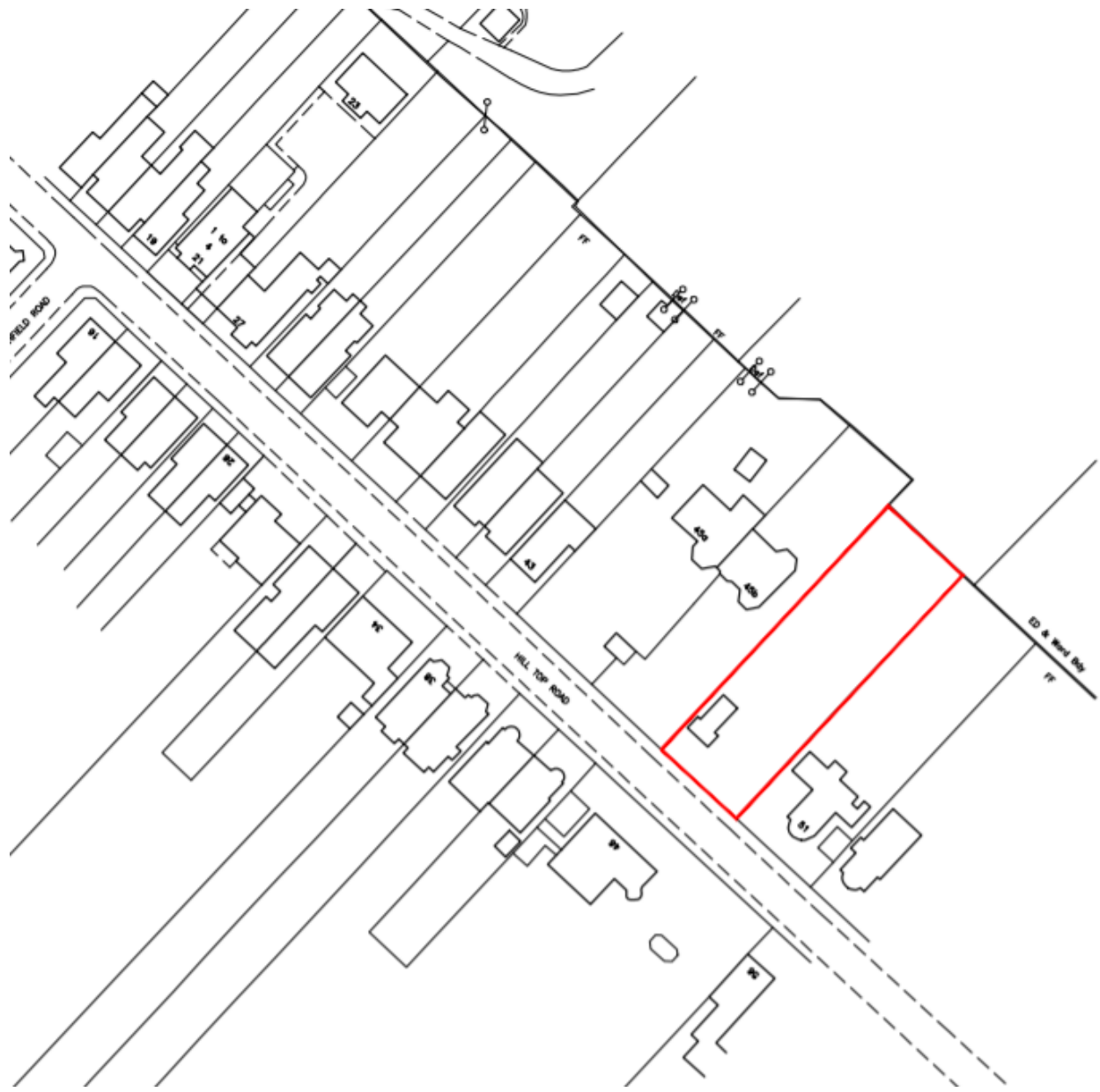
**19/02816/FUL**

23

**Land Between 45 And 51  
Hill Top Road  
Oxford  
OX4 1PD**



# Site location plan





View of the front of the site





## View of the front of the site (2)





View of the front of the site towards No. 51





View of the front of the site towards No. 45b





View of the existing garage





View of the rear of the site





View of No. 51 from the site





View of No. 51 from the site (2)





View of No. 45b from the site





# Birdseye – Application site edged in red

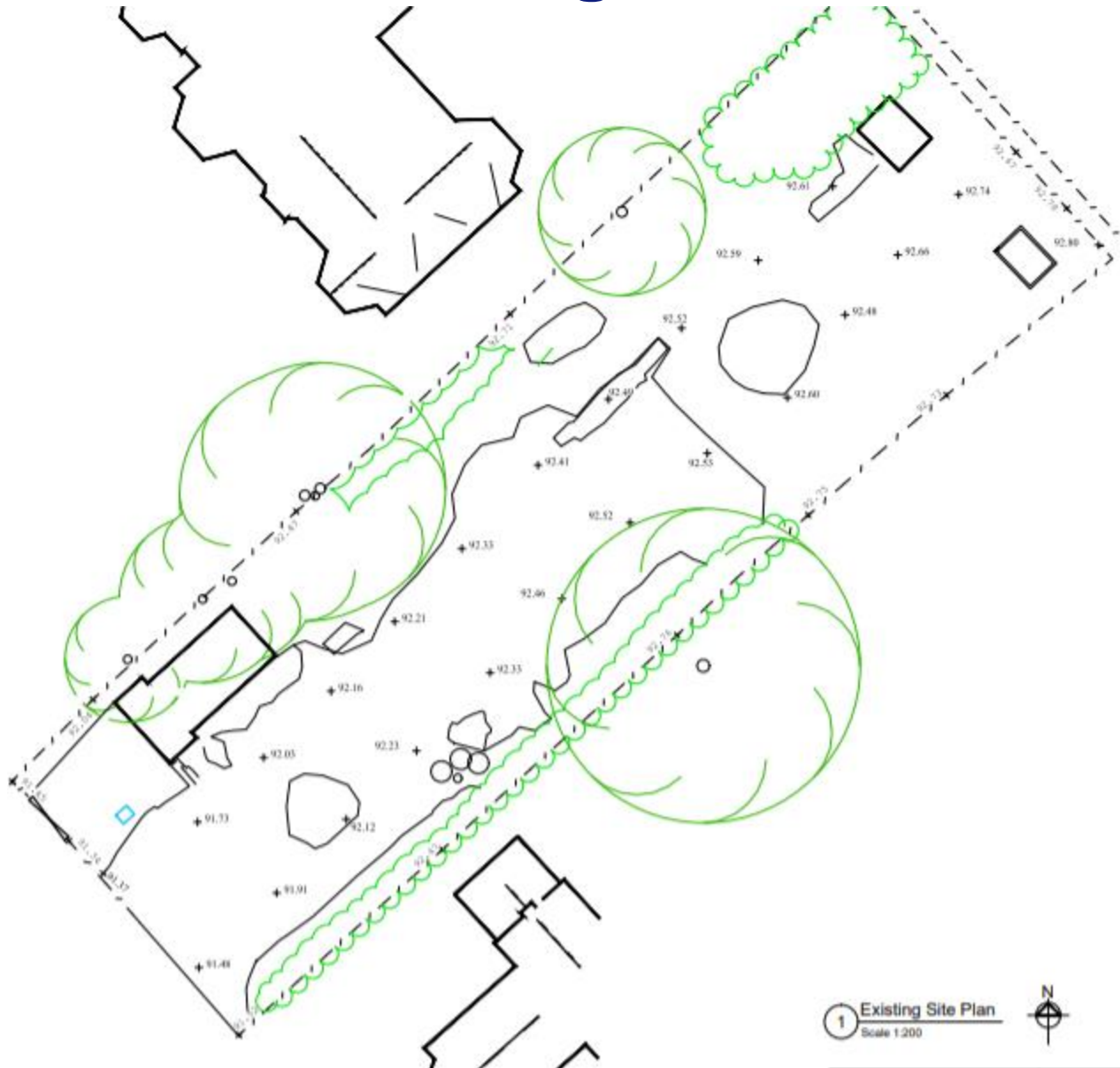




# Birdseye – Application site edged in red

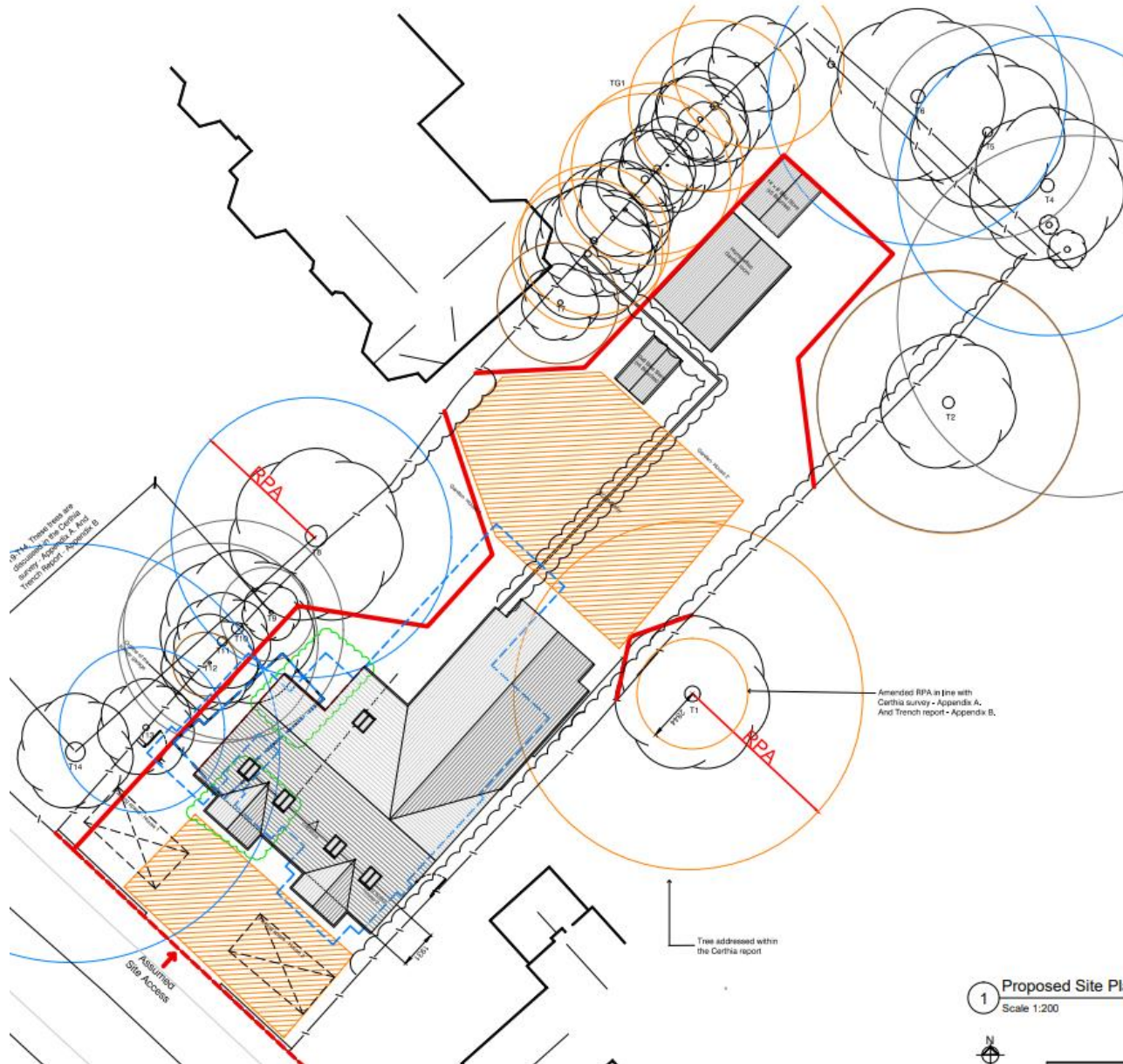


## 36





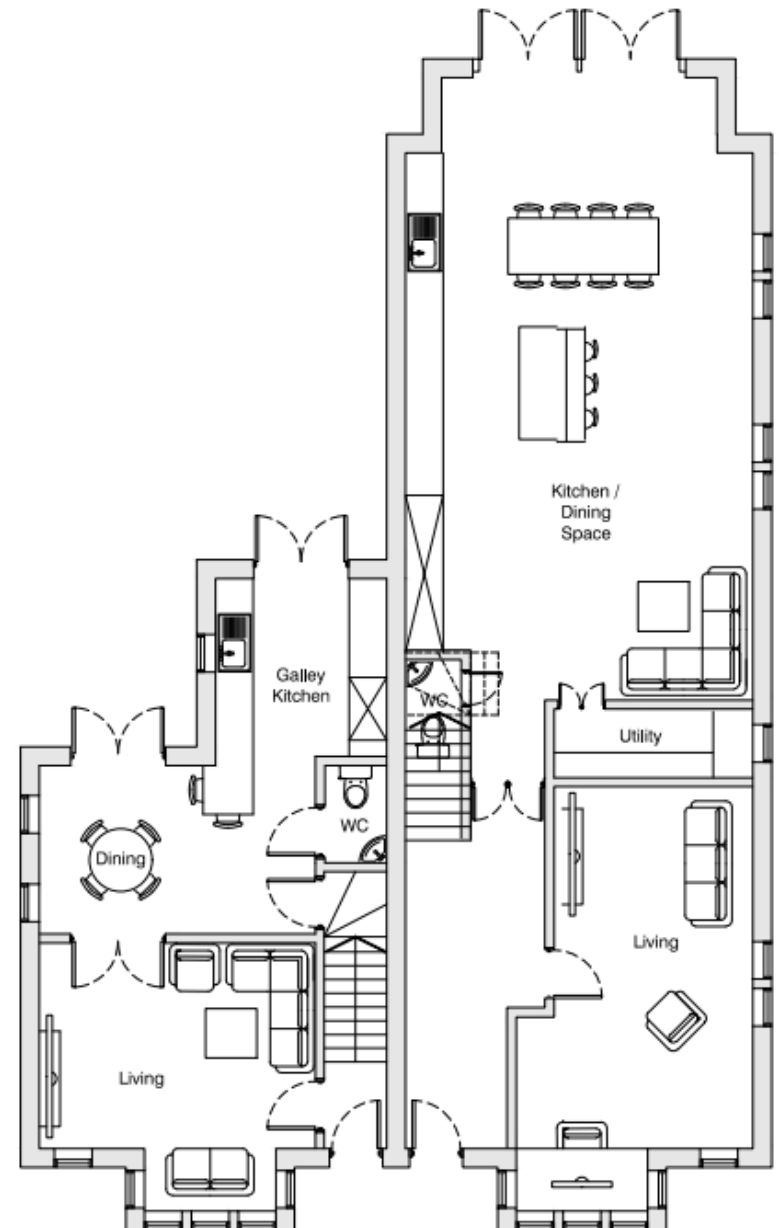
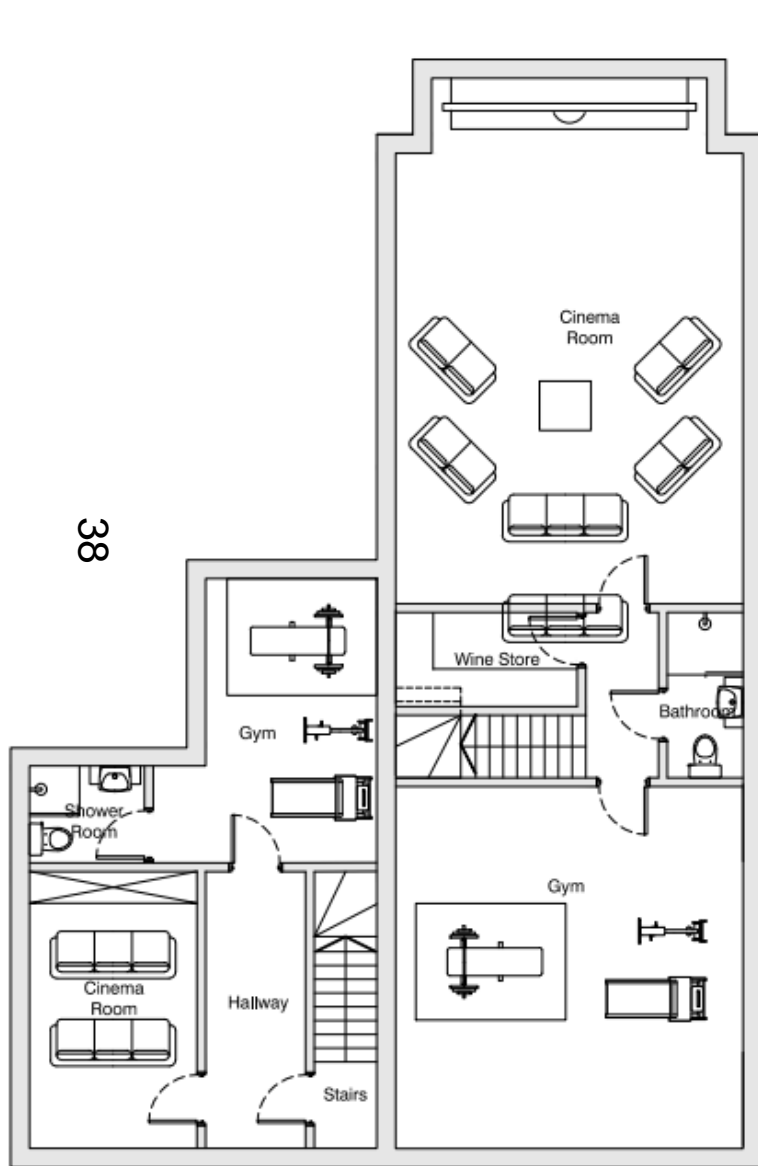
# Proposed Site Plan



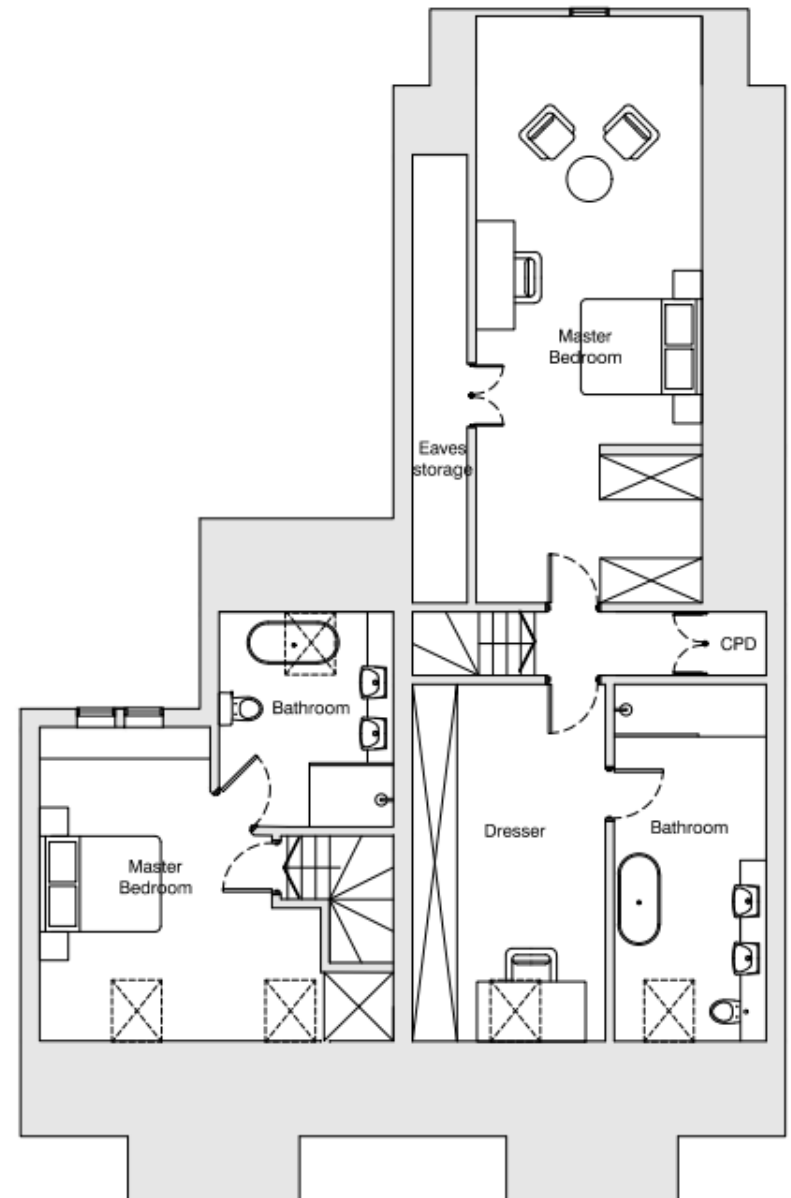
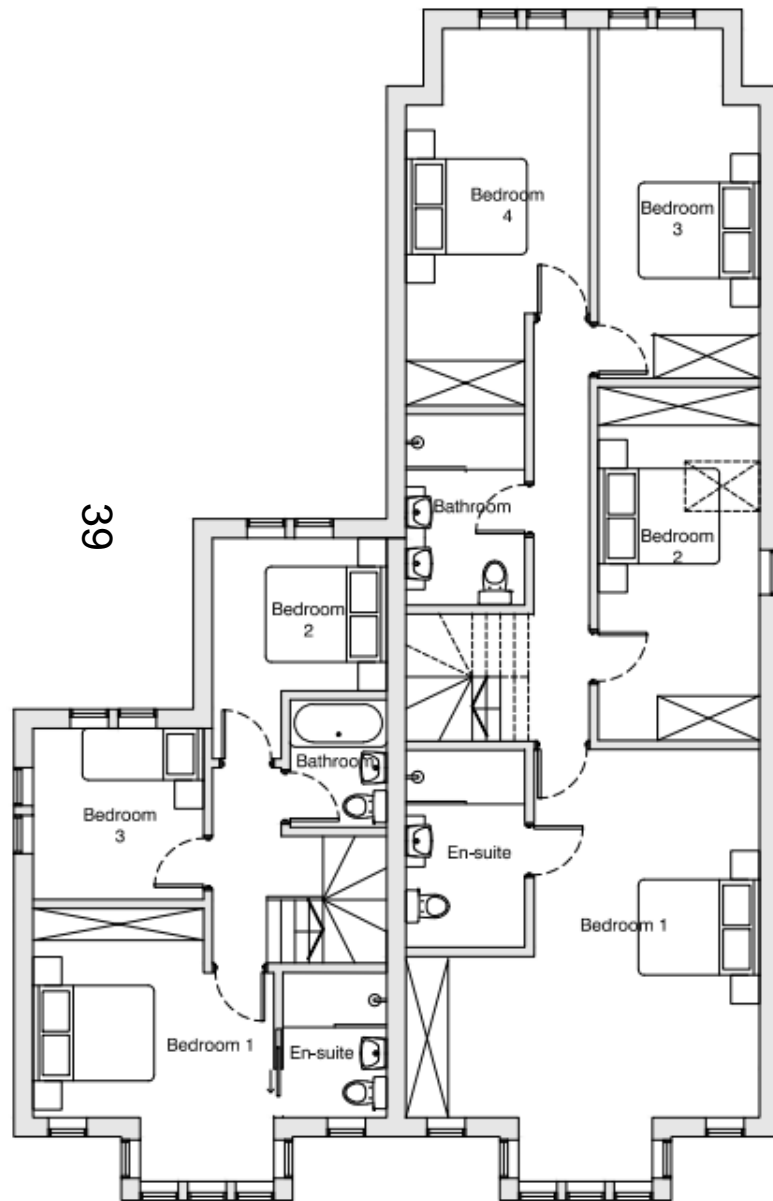
1 Proposed Site Plan  
Scale 1:200



# Proposed Basement and Ground Floor Plans



# Proposed First and Second Floor Plans



32.3191m<sup>2</sup>

# Proposed Front and Rear Elevations



1 Proposed South (Front) Elevation  
Scale 1:100



2 Proposed North (Rear) Elevation  
Scale 1:100



# Proposed Side Elevations



1 Proposed West (Side) Elevation  
Scale 1:100



2 Proposed East (Side) Elevation  
Scale 1:100

# Proposed Front and Rear Street Elevations

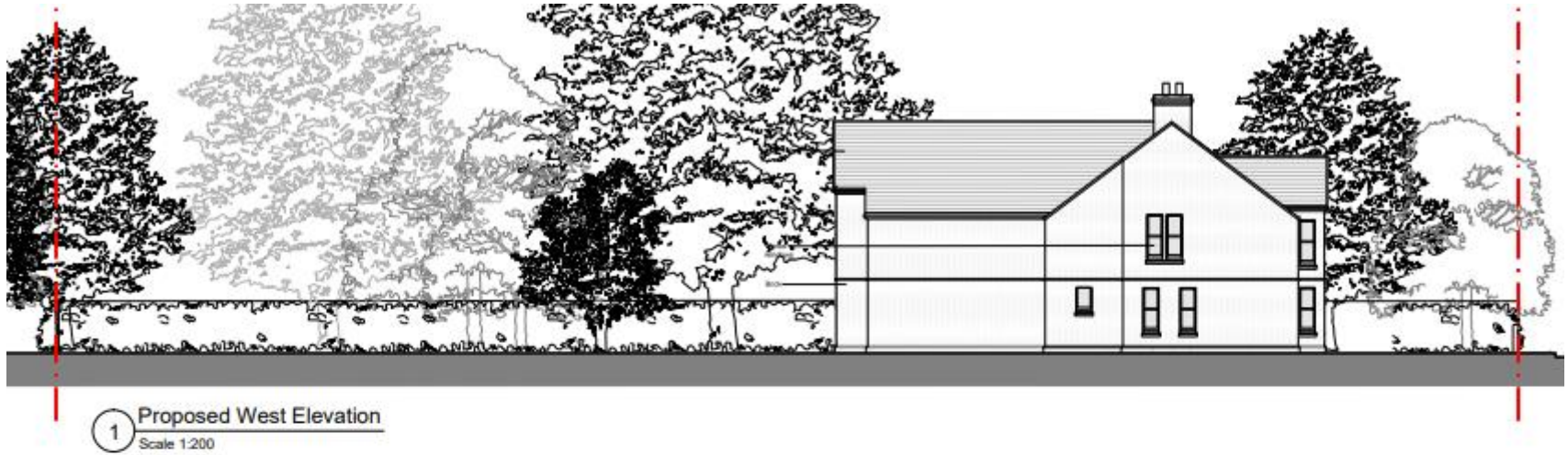


1 Proposed South Elevation  
Scale 1:200

42



# Proposed Side Street Elevations



43





This page is intentionally left blank