

East Area Planning Committee

On **Wednesday 3 March 2021** At **3.00 pm**

www.oxford.gov.uk



Presentations

Contents

Note: Planning Committee presentations contain mostly pictures, maps and plans. These are not in an accessible format.

To see full details of the application including full plans, representations, public comments and supplementary information, please [click here](#) and enter the relevant Planning Reference number in the search box

3.	20/02983/FUL: John Radcliffe Hospital, Headley Way, Oxford, OX3 9DU	3 - 20
4.	20/03198/FUL: Land To The Rear Of 4 Lime Walk, Oxford, OX3 7AE	21 - 38
5.	19/02003/FUL: Plot 16, Oxford Science Park, Robert Robinson Avenue, Oxford, OX4 4GA	39 - 64

The agenda, reports and any additional supplements can be found together with this supplement on the committee meeting webpage.

*View or subscribe to updates for agendas, reports and minutes at mycouncil.oxford.gov.uk.
All public papers are available from the calendar link to this meeting once published*

Oxford City Council, Town Hall, St Aldate's Oxford OX1 1BX

This page is intentionally left blank

East Area Planning Committee Presentation

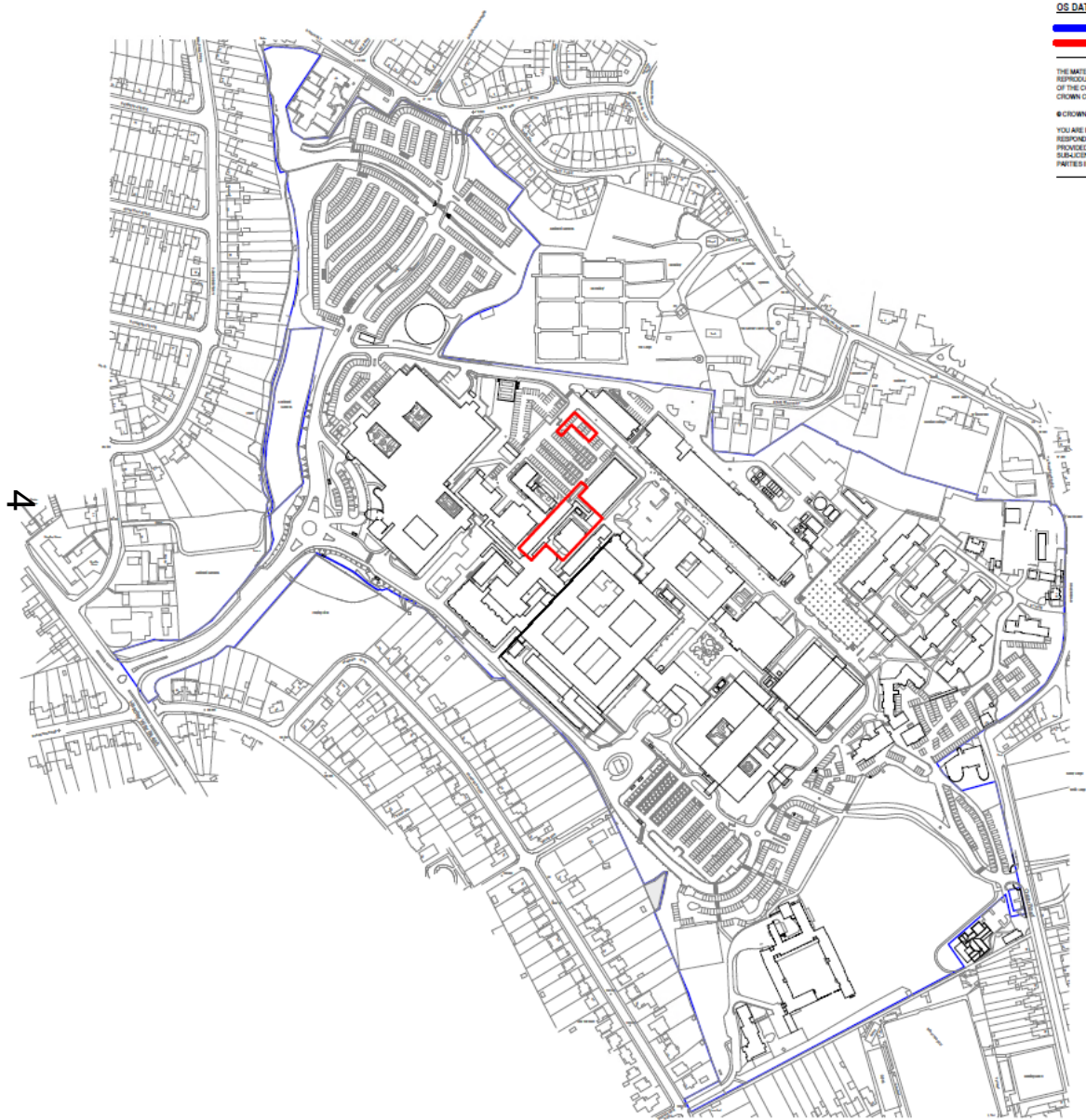
20/02983/FUL

John Radcliffe Hospital

www.oxford.gov.uk



Site Location Plan



OS DATA:
PROPERTY BOUNDARY
SITE BOUNDARY

THE MATERIAL CONTAINED IN THIS DRAWING HAS BEEN REPRODUCED FROM AN ORDNANCE SURVEY MAP WITH PERMISSION OF THE CONTROLLER OF HER MAJESTY'S STATIONARY OFFICE, CROWN COPYRIGHT RESERVED.

© CROWN COPYRIGHT AND DATABASE RIGHTS 2020 OS 0100012708

YOU ARE PERMITTED TO USE THIS DATA SOLELY TO ENABLE YOU TO RESPOND TO, OR INTERACT WITH, THE ORGANISATION THAT PROVIDED YOU WITH THE DATA. YOU ARE NOT PERMITTED TO COPY, SUB-LICENSE, DISTRIBUTE OR SELL ANY OF THIS DATA TO THIRD PARTIES IN ANY FORM.

www.oxford.gov.uk



Application site from the North West

www.oxford.gov.uk



5



Demolition works which have taken place

www.oxford.gov.uk



View from the North

7



www.oxford.gov.uk



View from the East towards the Main JR Building

www.oxford.gov.uk



View from the South

www.oxford.gov.uk



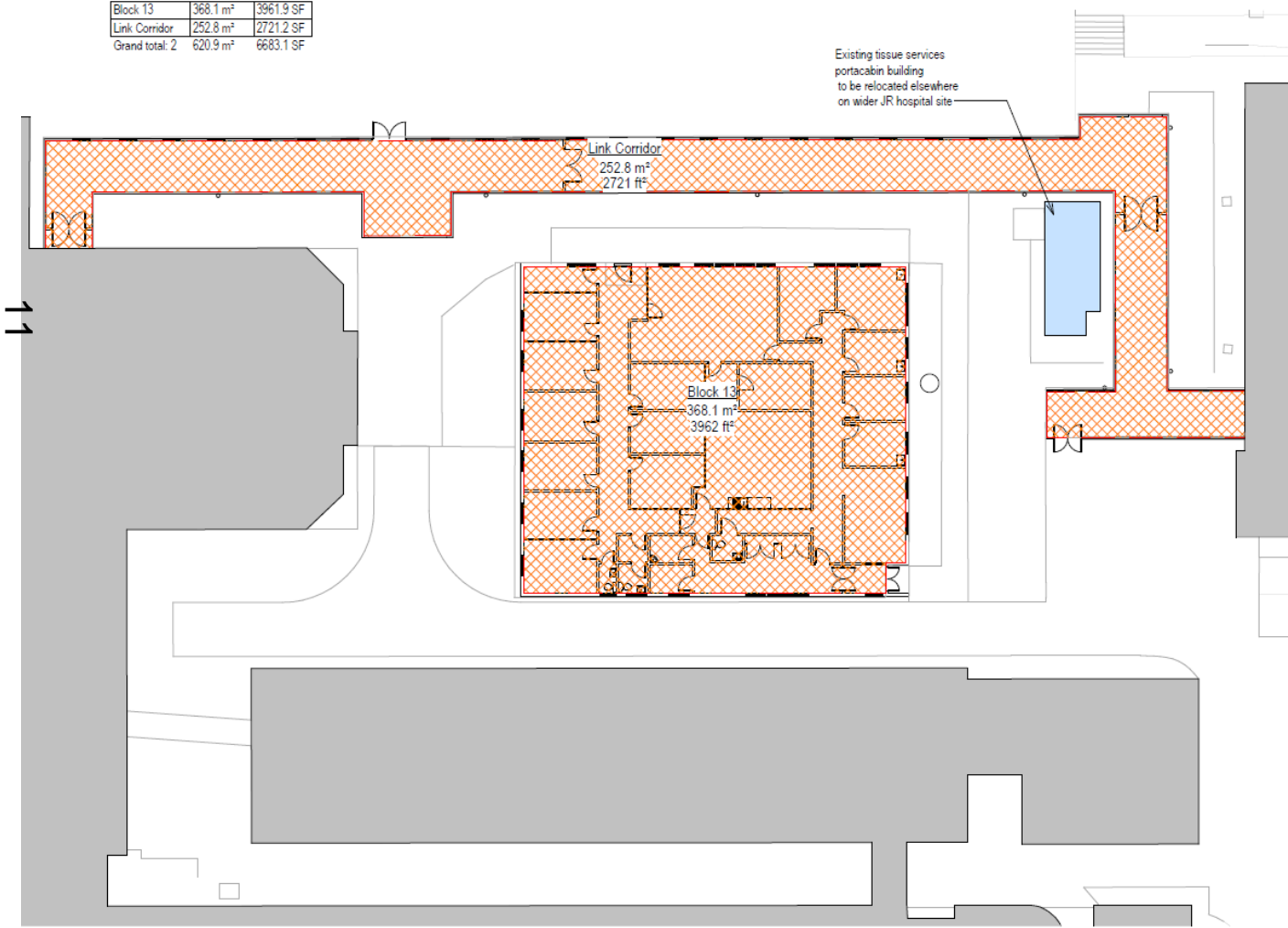
Longer range views from the North

www.oxford.gov.uk



Existing Site Plan

Existing GIA for Demolition		
Name	Area	Area ft
Block 13	368.1 m ²	3961.9 SF
Link Corridor	252.8 m ²	2721.2 SF
Grand total: 2	620.9 m ²	6683.1 SF



Proposed Site Plan/Level 1 Plan

www.oxford.gov.uk

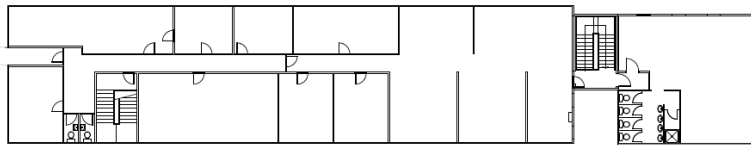
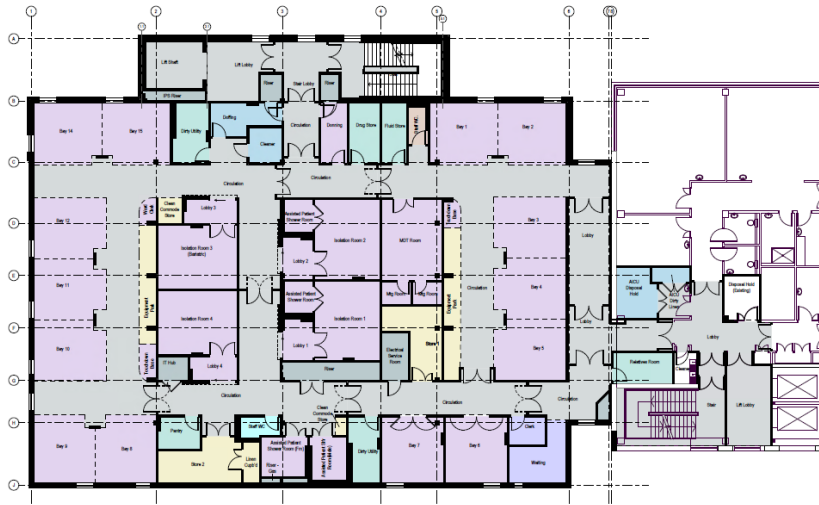


Proposed Level 2 and 3 Plans

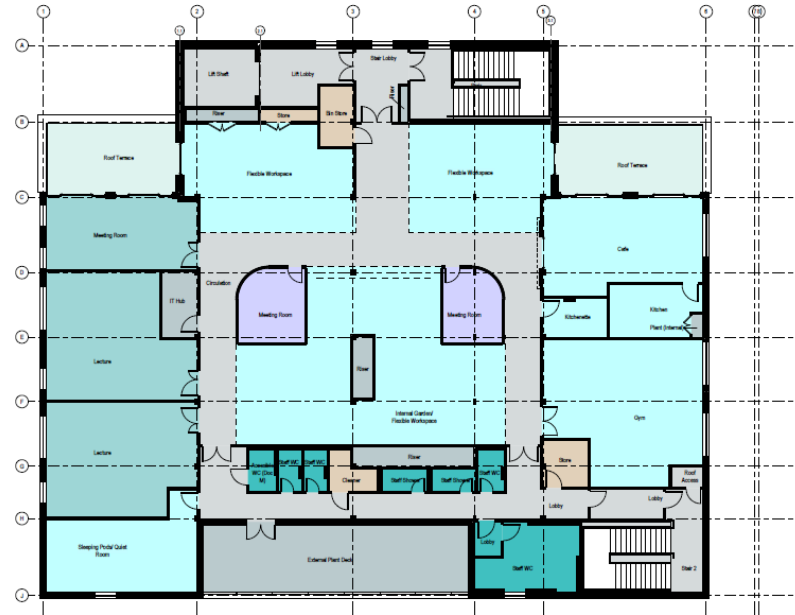
www.oxford.gov.uk



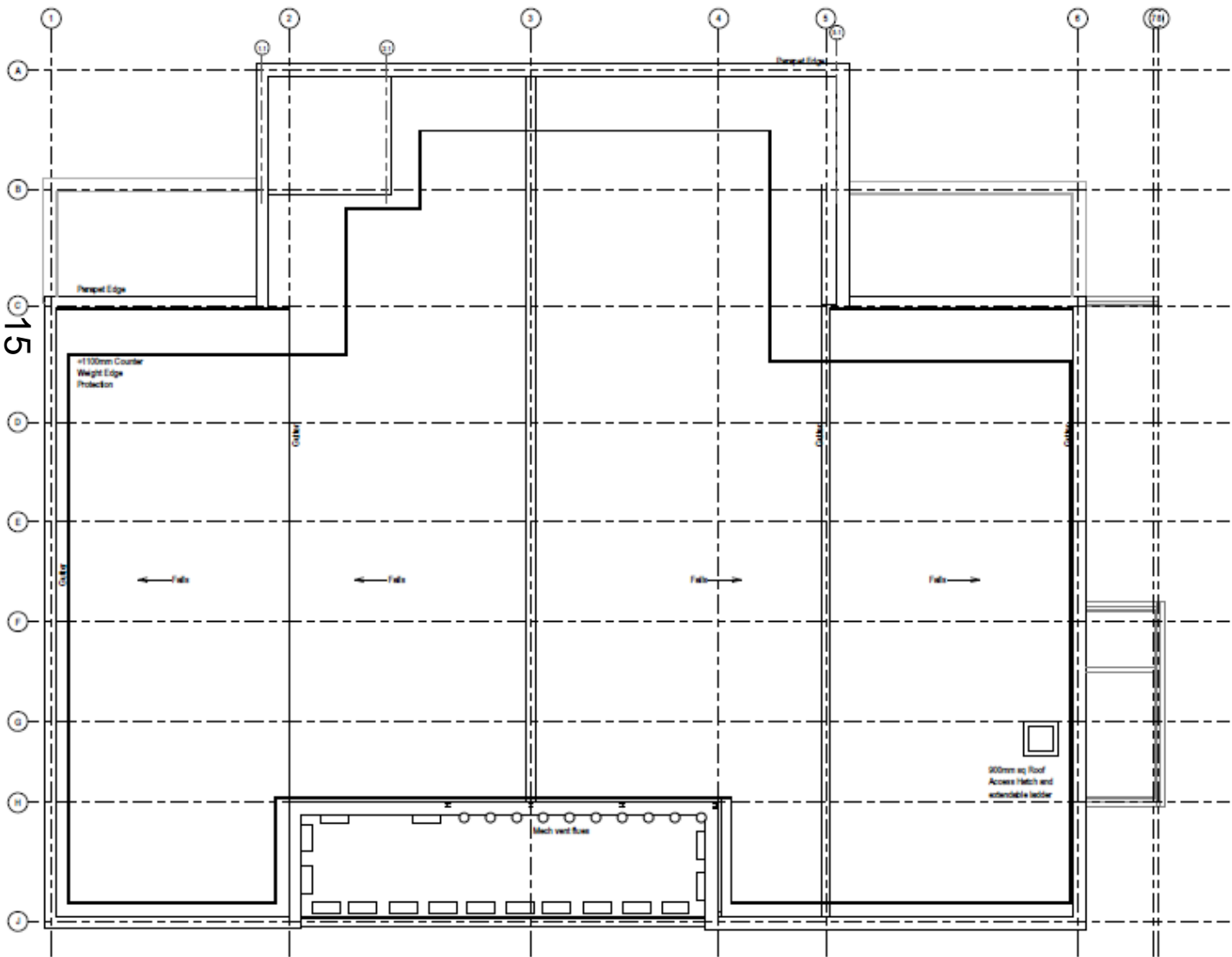
13



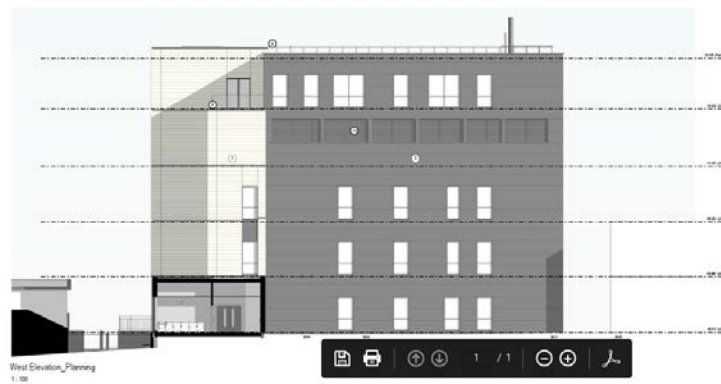
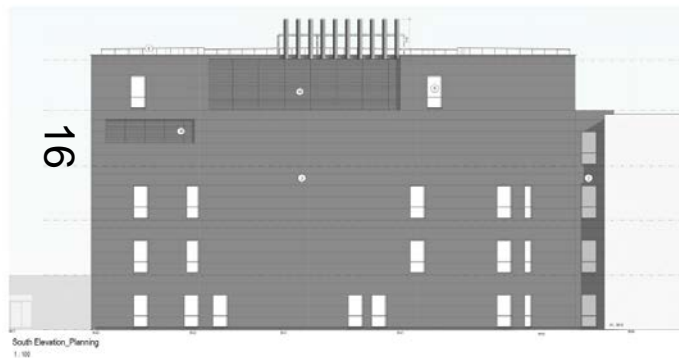
www.oxford.gov.uk



Proposed Roof Plan



Proposed Elevations

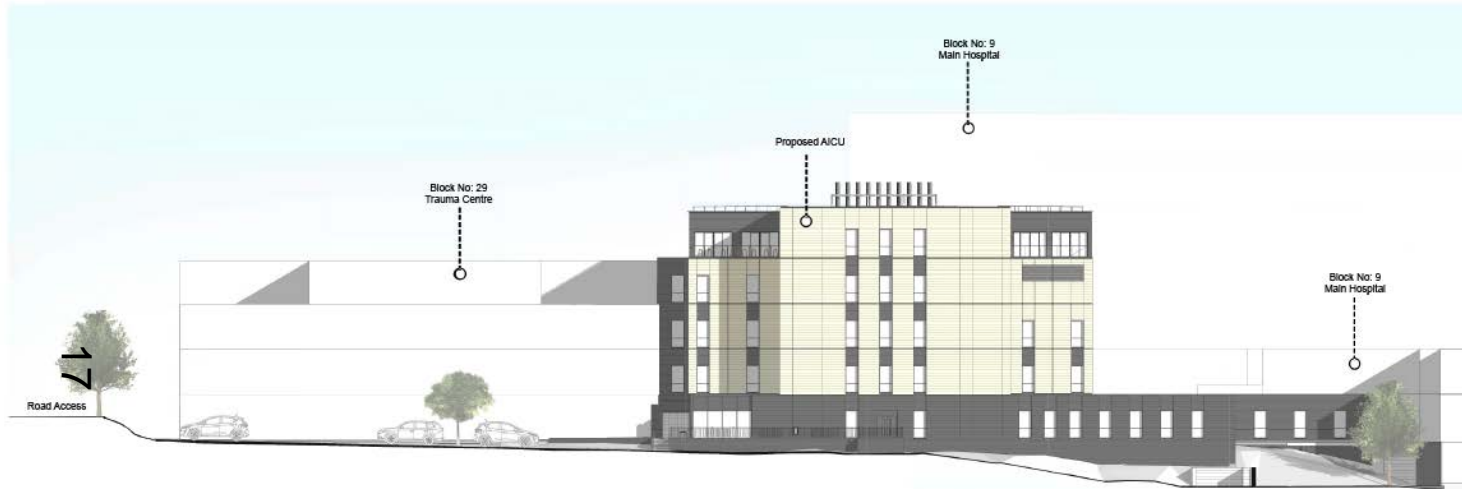


www.oxford.gov.uk



Proposed Contextual Elevations

www.oxford.gov.uk



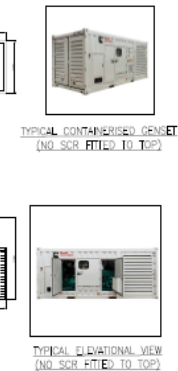
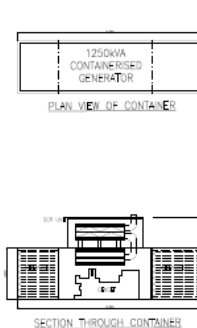
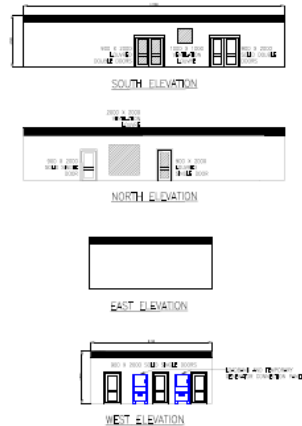
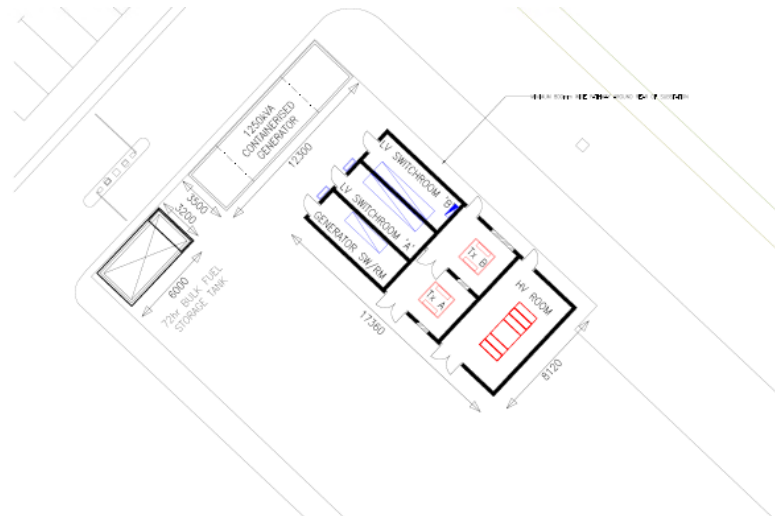
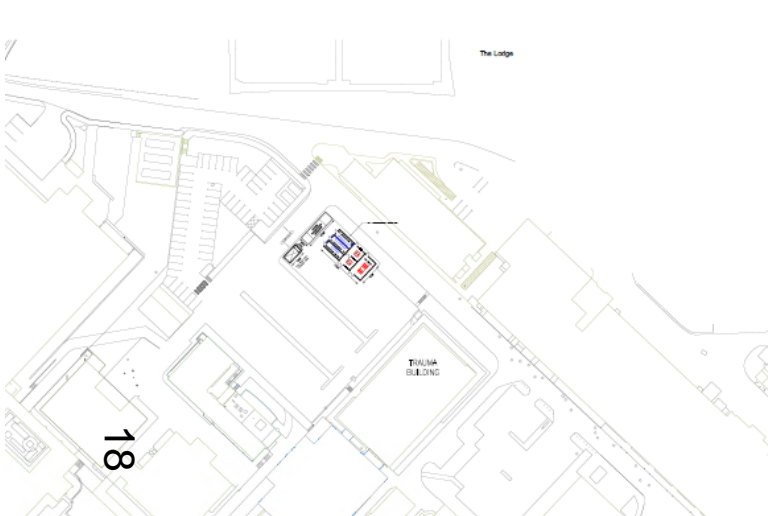
Section CC
1:200



Section DD
1:200



Proposed Substation Plans and Elevations



Proposed Visual

www.oxford.gov.uk



This page is intentionally left blank

East Area Planning Committee Presentation

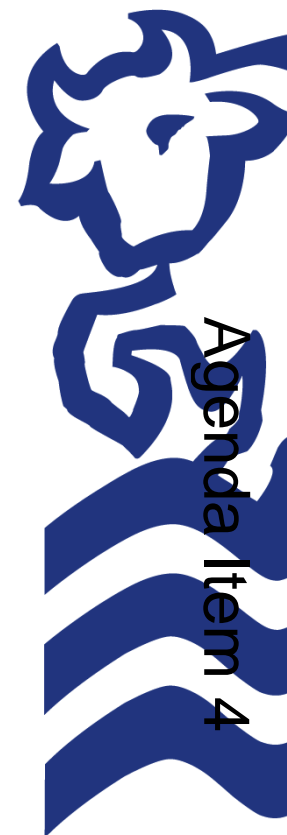
www.oxford.gov.uk



20/03198/FUL

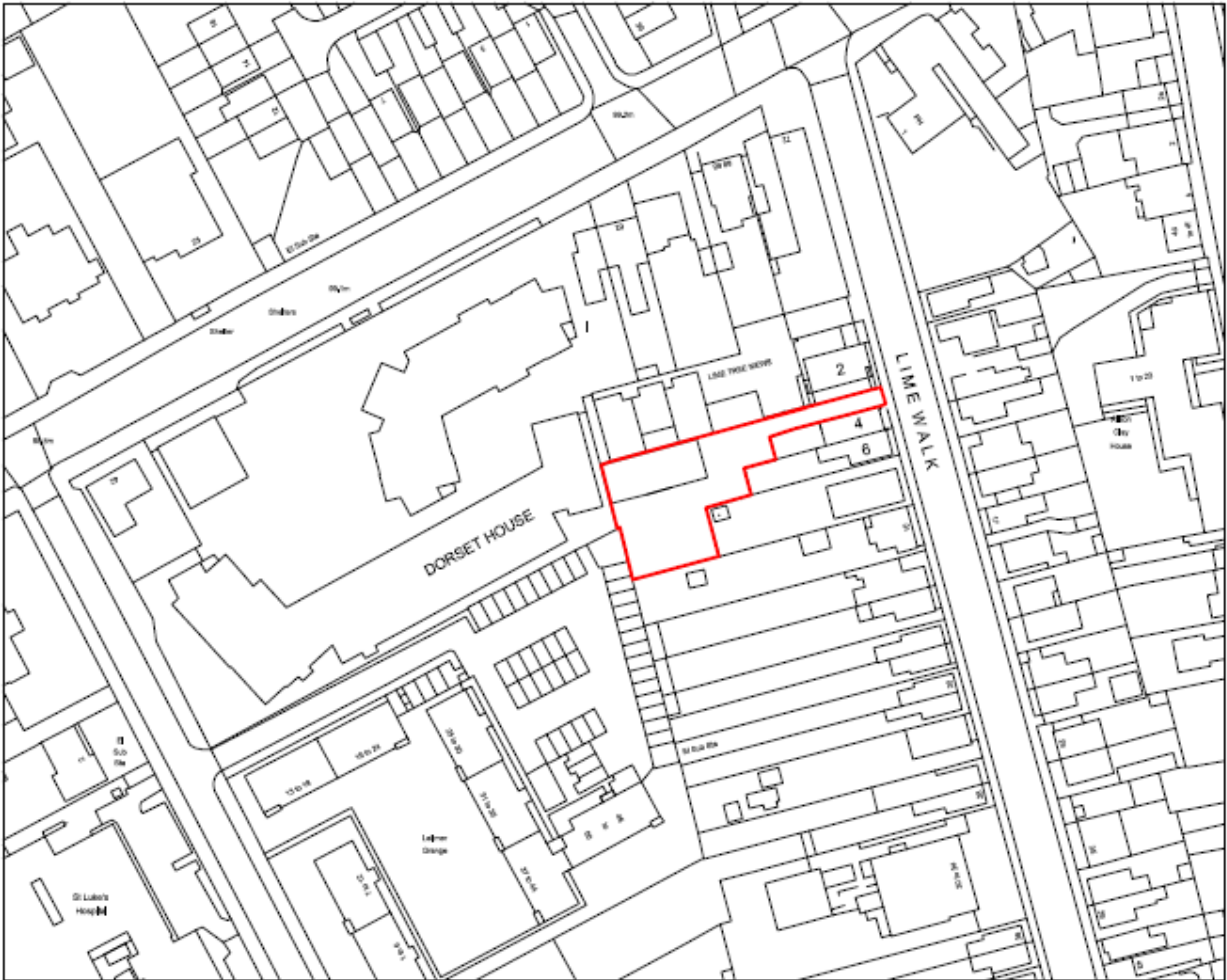
4 Lime Walk

21



Site Location Plan

22



www.oxford.gov.uk



Access from Lime Walk



www.oxford.gov.uk



Relationship with Unite Student Accommodation



www.oxford.gov.uk



**OXFORD
CITY
COUNCIL**



Existing garage – looking north



www.oxford.gov.uk



**OXFORD
CITY
COUNCIL**



View from Lime Tree Mews looking south



www.oxford.gov.uk



View towards Lime Walk



www.oxford.gov.uk



View Looking South



28

www.oxford.gov.uk



**OXFORD
CITY
COUNCIL**



View Looking West towards Latimer Grange



www.oxford.gov.uk

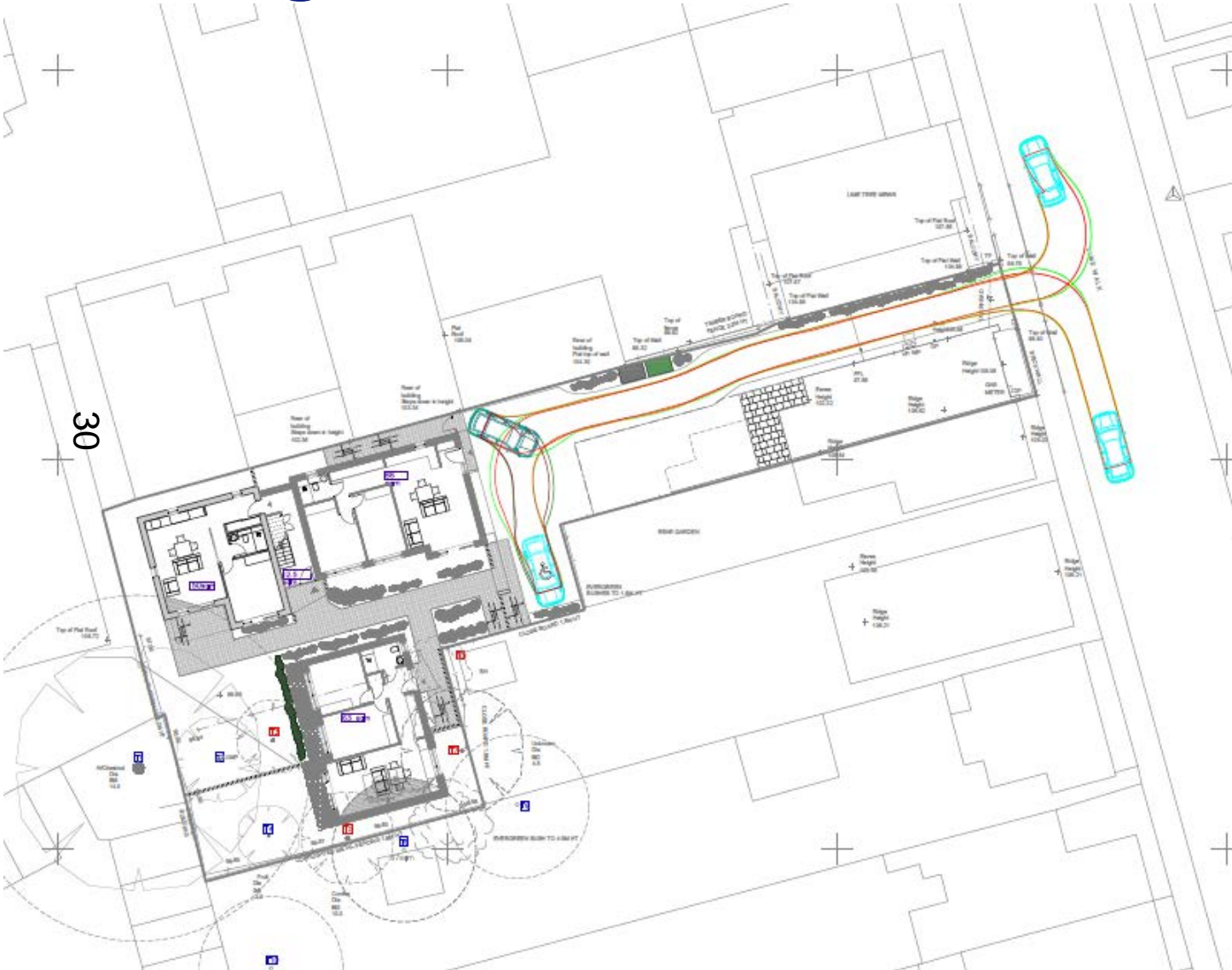


**OXFORD
CITY
COUNCIL**

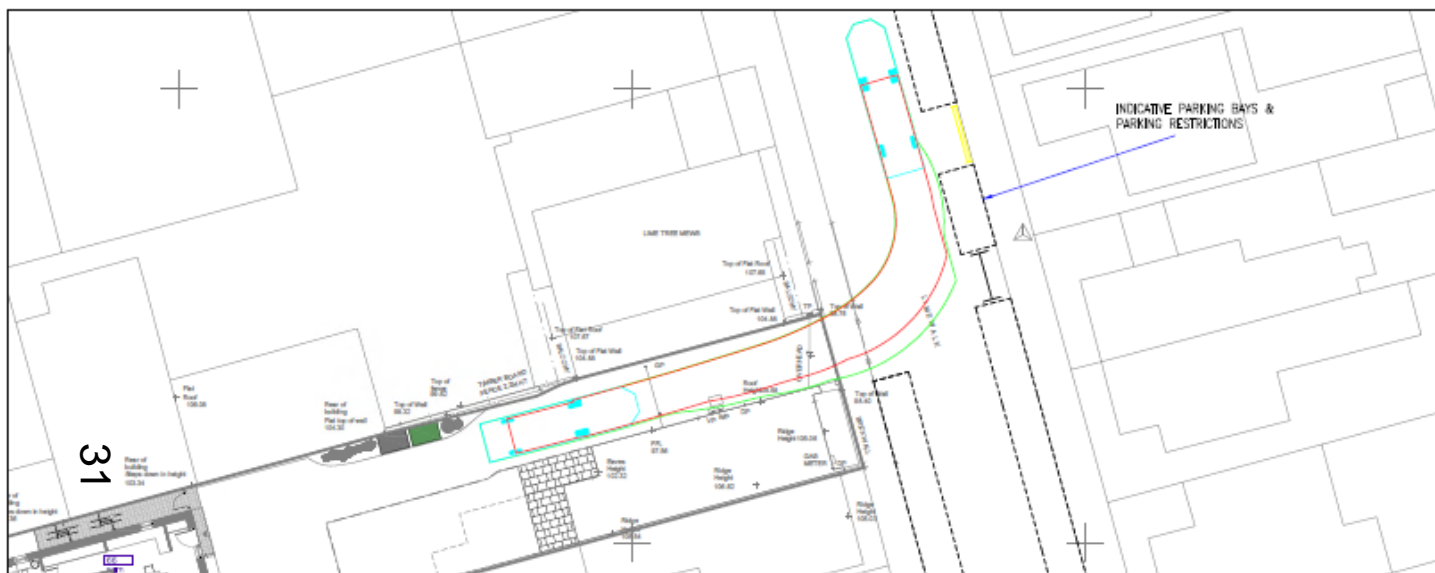


Proposed Site Plan with Vehicle Tracking

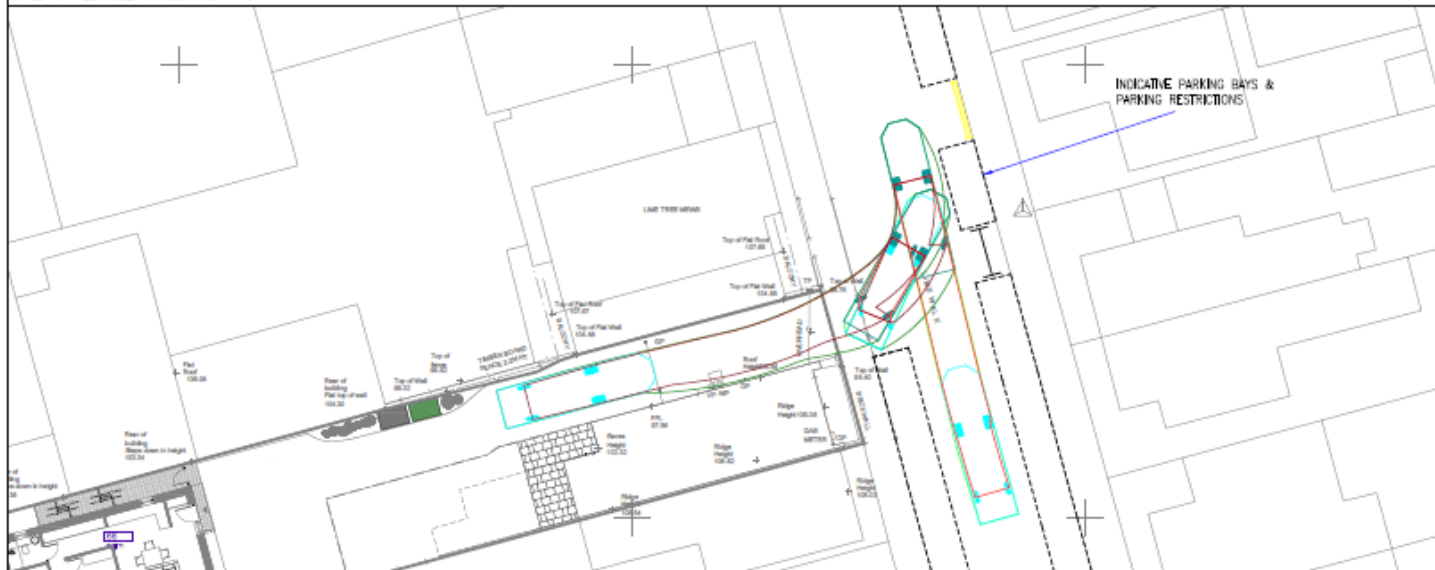
www.oxford.gov.uk



Fire Appliance Tracking



FIRE APPLIANCE TRACKING - IN

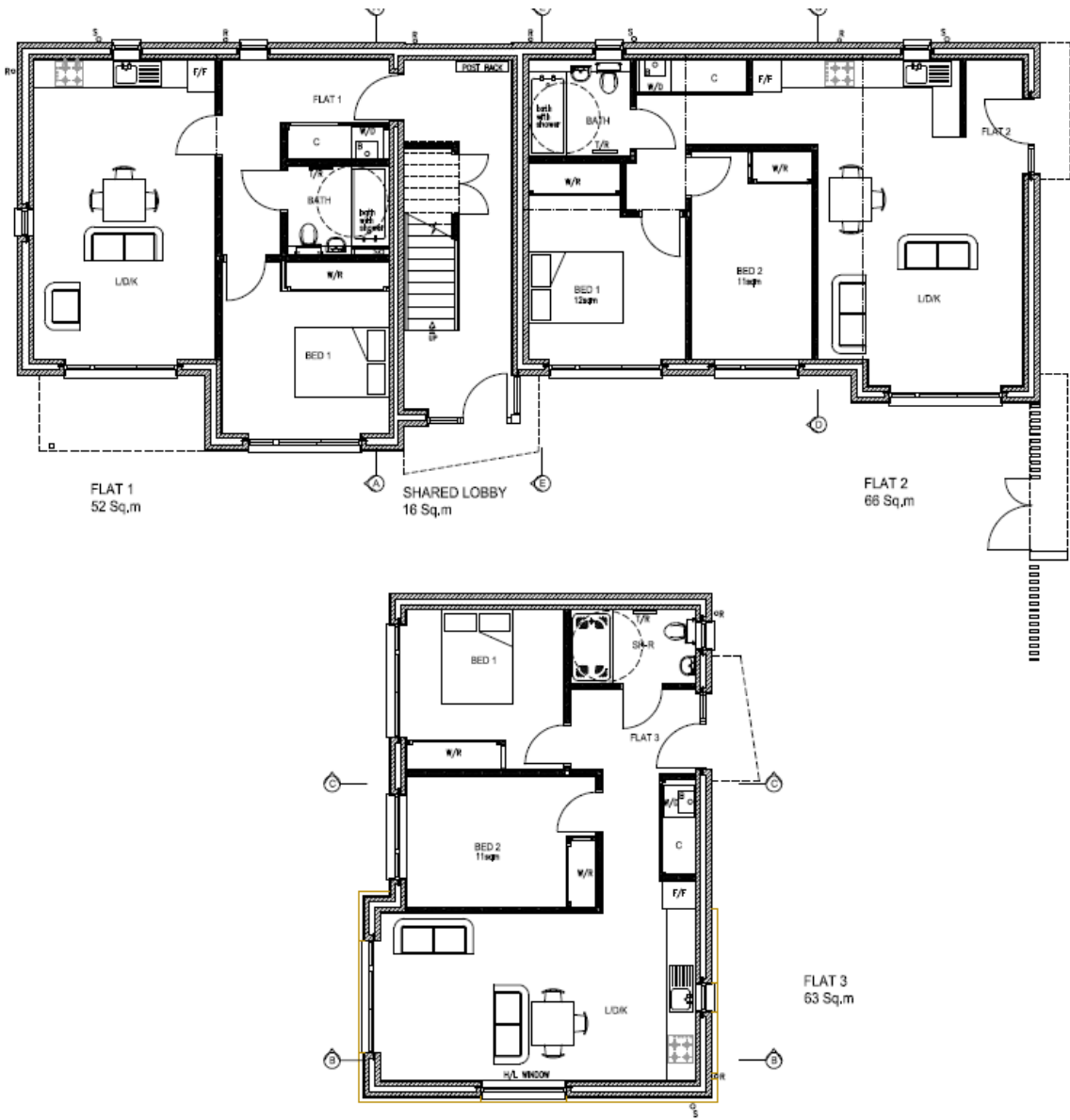


FIRE APPLIANCE TRACKING - OUT



Proposed Ground Floor Plan

www.oxford.gov.uk



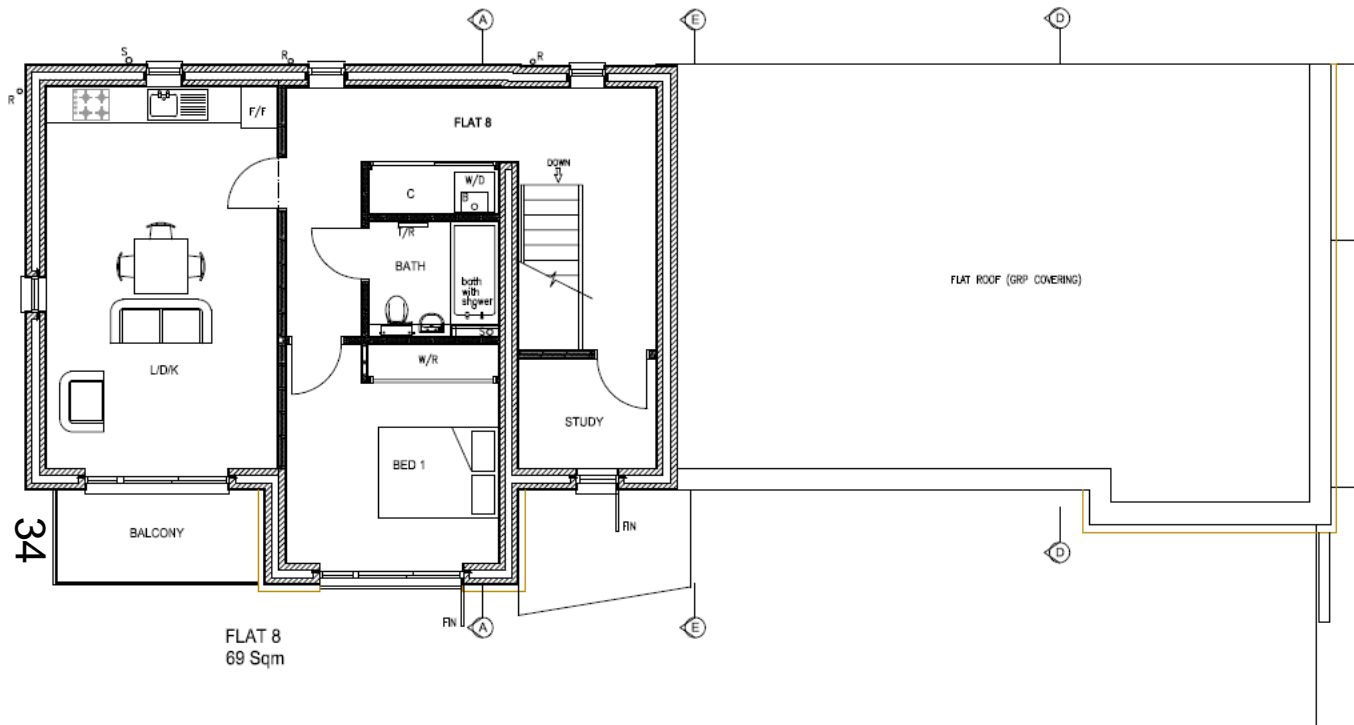
www.oxford.gov.uk



SHARED LOBBY
8,5 Sq.m

FLAT 7
66 Sq.m

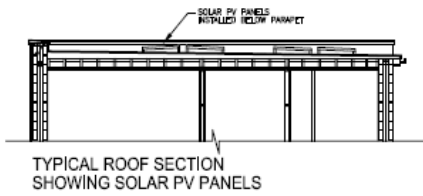
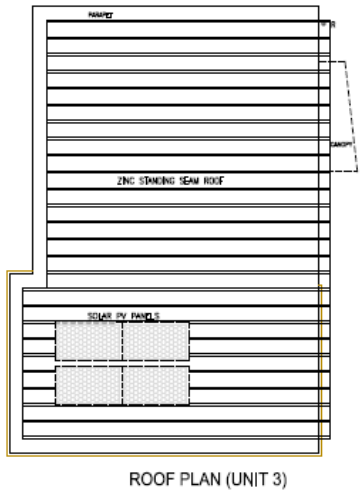
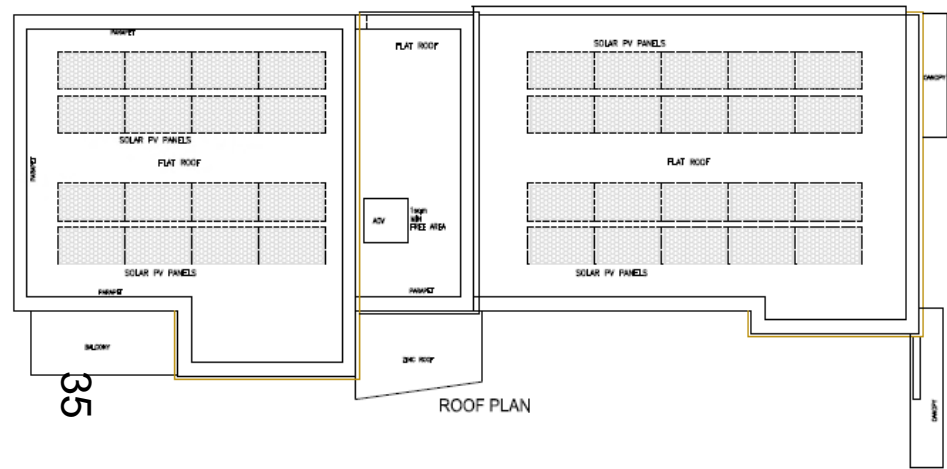
Proposed Third Floor Plan



www.oxford.gov.uk



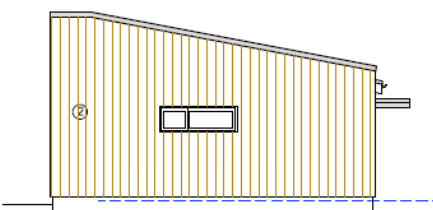
Proposed Roof Plan



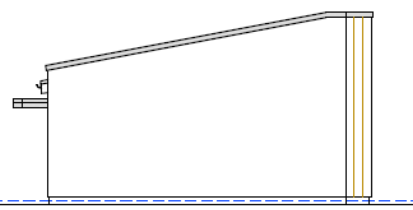
Proposed West Elevation



WEST ELEVATION



SOUTH - SIDE ELEVATION



NORTH - SIDE ELEVATION

MATERIALS KEY

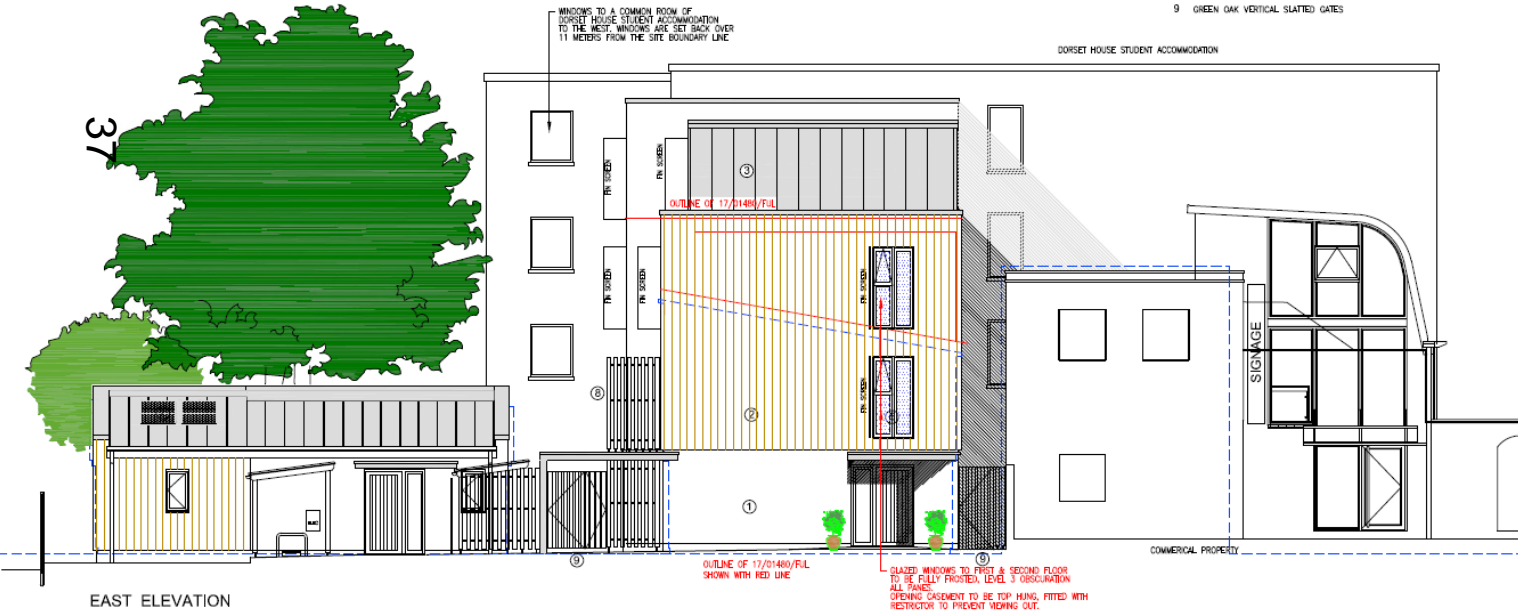
- 1 K REND THROUGH COLOUR SILICON THIN COAT RENDER COLOUR- LIMESTONE WHITE
- 2 CEDRAL CLICK WOOD CEMENT MARLEY CLADDING COLOUR CO4 DARK BROWN
- 3 VM ZINC ANTHRACITE GREY STANDING SEAM
- 4 FROSTED GLASS
- 5 ANTHRACITE COLOURED UPVC DOORSETS & FLUSH CASEMENT WINDOWS, ALL RECESSED WITHIN REVEALS & EXTENDED CILLS
- 6 GALVANISED BALCONY STRUCTURES WITH OPEN ALUMINIUM DECKING & METAL BALUSTRADE
- 7 SOLAR PV PANELS
- 8 GREEN OAK 100mmx50mm VERTICAL SLATTED SCREENING/FENCING
- 9 GREEN OAK VERTICAL SLATTED GATES

www.oxford.gov.uk



Proposed East Elevation

www.oxford.gov.uk

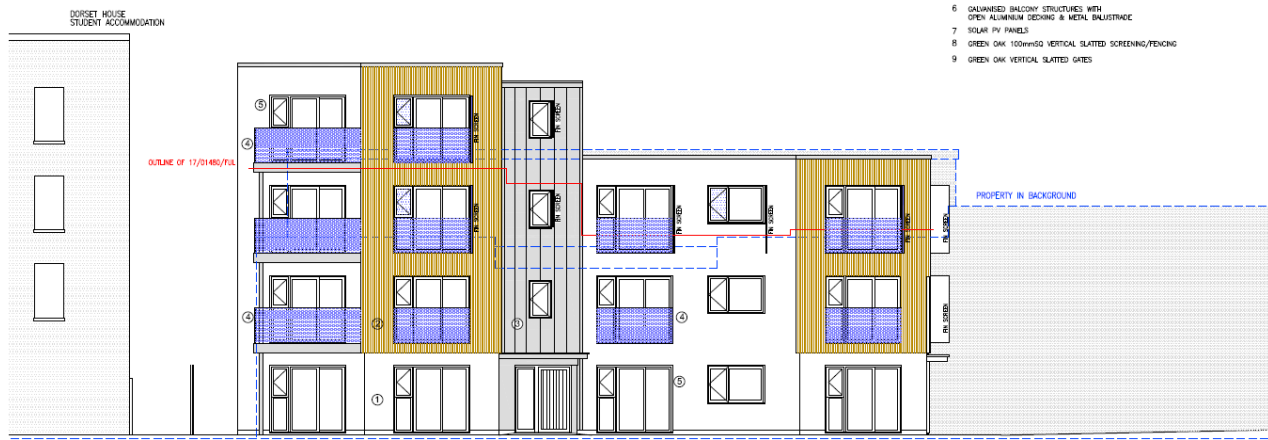
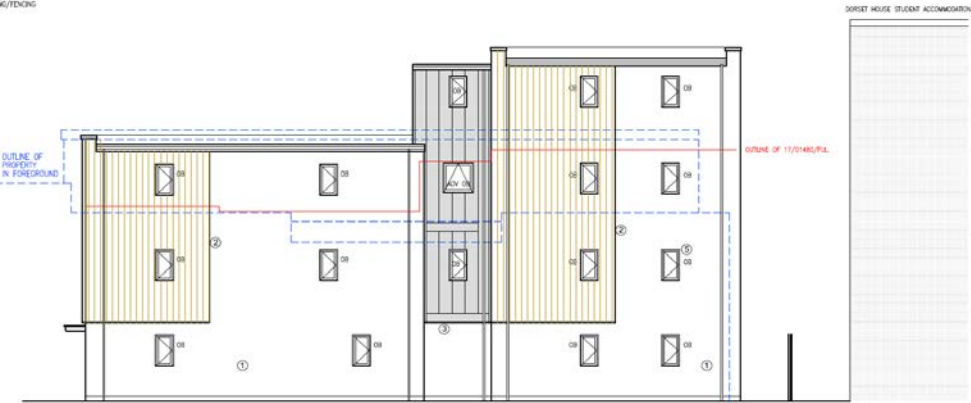


MATERIALS KEY

- 1 K REND THROUGH COLOUR SILICON THIN COAT RENDER
COLOUR- LIMESTONE WHITE
- 2 CEDRAL CLICK WOOD CEMENT MATLEY CLADDING
COLOUR COH DARK BROWN
- 3 VM ZINC ANTHRACITE GREY STANDING SEAM
- 4 FROSTED GLASS
- 5 ANTHRACITE COLOURED UPVC DOORSETS & FLUSH CASEMENT WINDOWS, ALL RECESSED WITHIN REIGALS & EXTENDED CHILLS
- 6 GALVANISED BALCONY STRUCTURES WITH OPEN ALUMINIUM DECKING & METAL BALUSTRADE
- 7 SOLAR PV PANELS
- 8 GREEN OAK 100mmSQ VERTICAL SLATTED SCREEDING/FENCING
- 9 GREEN OAK VERTICAL SLATTED GATES

Proposed North and South Elevations

- MATERIALS KEY**
- 1 K REND THROUGH COLOUR SILICON THIN COAT RENDER
COLOUR- LIMESTONE WHITE
 - 2 CENTRAL CLUCK WOOD CEMENT MARLEY CLADDING
COLOUR CO4 DARK BROWN
 - 3 VM ZINC ANTHRACITE GREY STANDING SEAM
 - 4 FROSTED GLASS
 - 5 ANTHRACITE COLOURED UPVC DOORSETS &
FLUSH CASSETT WINDOWS, ALL RECESSED WITHIN
REVEALS & EXTENDED CALLS
 - 6 GALVANISED BALCONY STRUCTURES WITH
OPEN ALUMINIUM DECKING & METAL BALUSTRADE
 - 7 SOLAR PV PANELS
 - 8 GREEN OAK 100mmSQ VERTICAL SLATED SCREENING/FENCING
 - 9 GREEN OAK VERTICAL SLATED GATES



SOUTH ELEVATION

www.oxford.gov.uk



East Area Planning Committee Presentation

www.oxford.gov.uk



Reference Number: 19/02003/FUL

**Site Address: Plot 16, Oxford Science
Park, Robert Robinson Avenue**

39

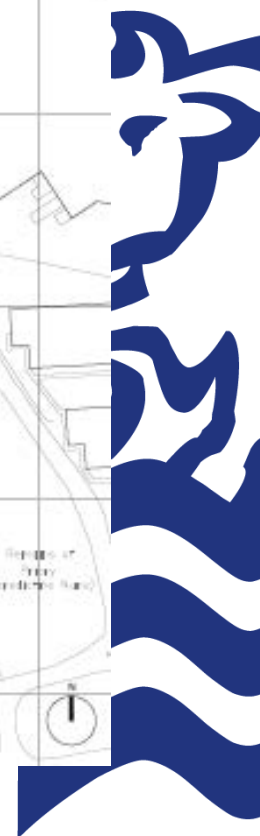


Location Plan

ord.gov.uk



ORD
TY
NCIL



Aerial View



Site Photos

gov.uk



**OXFORD
CITY
COUNCIL**



Site Photos

www.oxford.gov.uk



**OXFORD
CITY
COUNCIL**



Site Photos

www.oxford.gov.uk



44



Site Photos

gov.uk



45



Site Photos

gov.uk



Site Photos

d.gov.uk



**OXFORD
CITY
COUNCIL**



Site Photos

[-gov.uk](https://www.oxford.gov.uk)

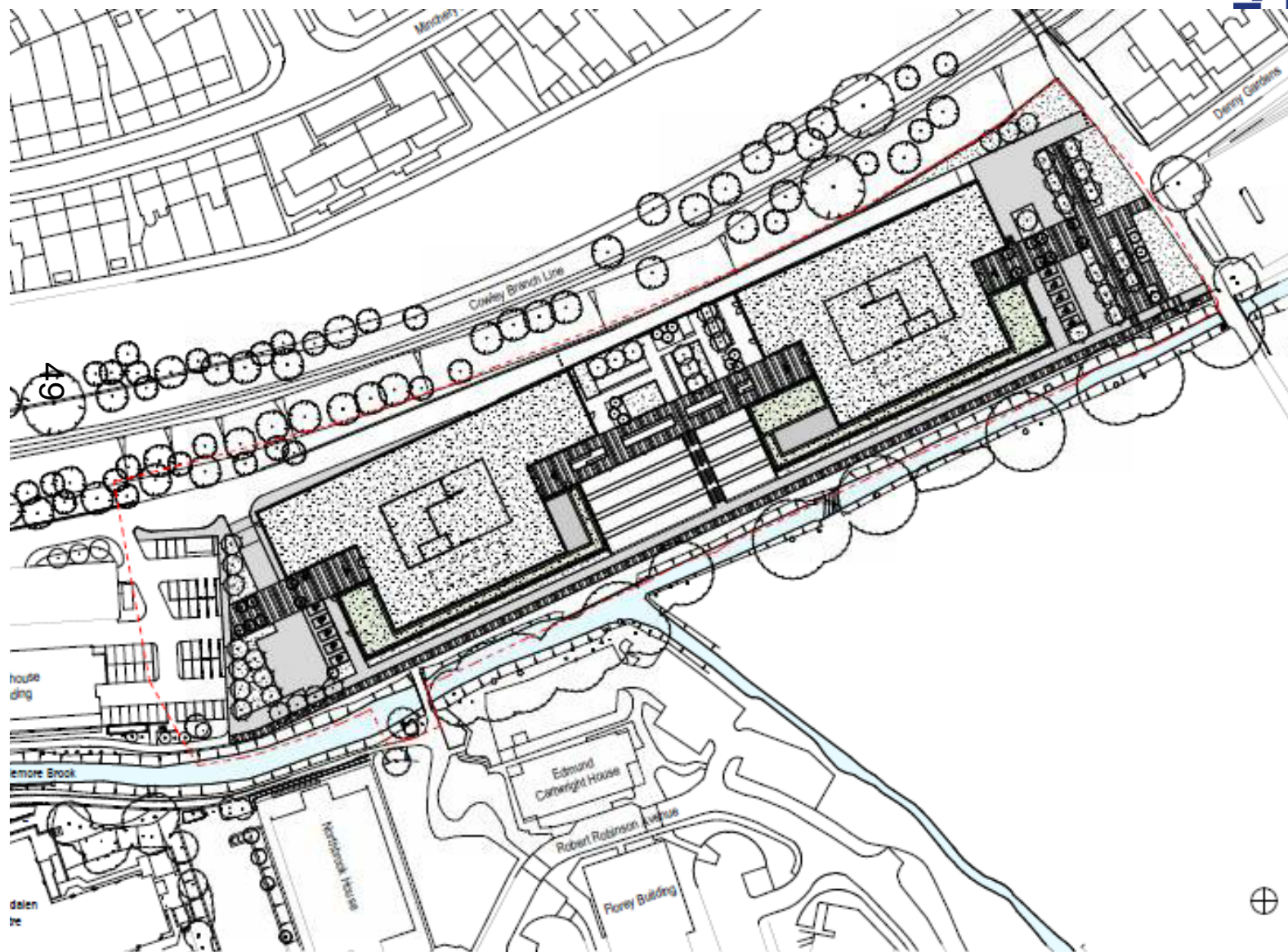


**OXFORD
CITY
COUNCIL**



48

Site Plan



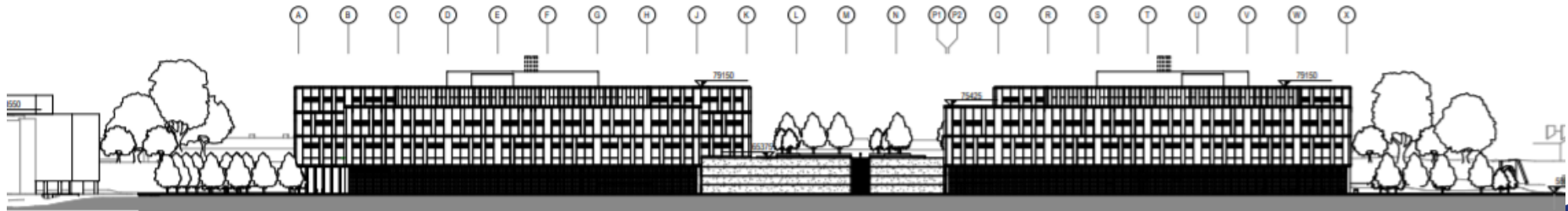
1.gov.uk



OXFORD
CITY
COUNCIL

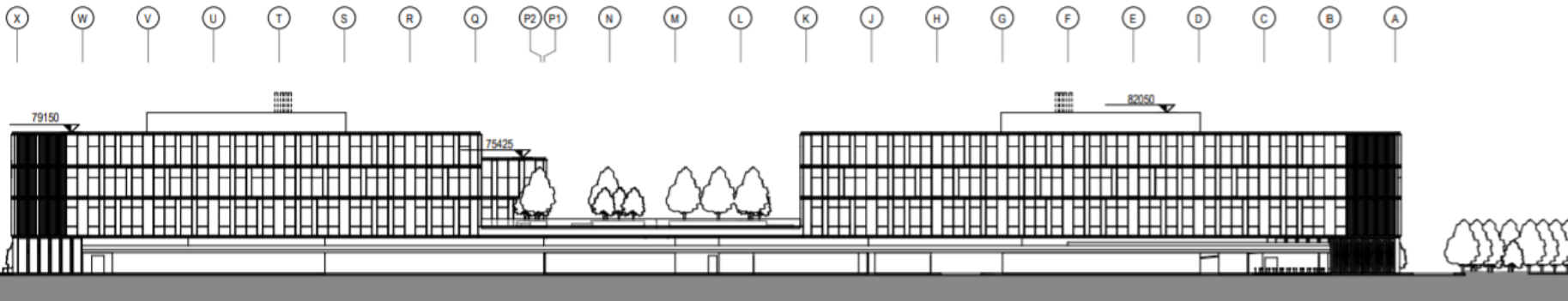


Proposed Site Sections



Contextual South Elevation

50



Visuals



Visuals



Visuals (Robert Robinson Avenue looking south adjacent to Magdalen Centre)



Visuals



Visuals (From St Nicholas Road)



Entrance to site from Minchery Lane

ord.gov.uk



56

D
IL

Visuals (From footpath leading from Minchery Lane)



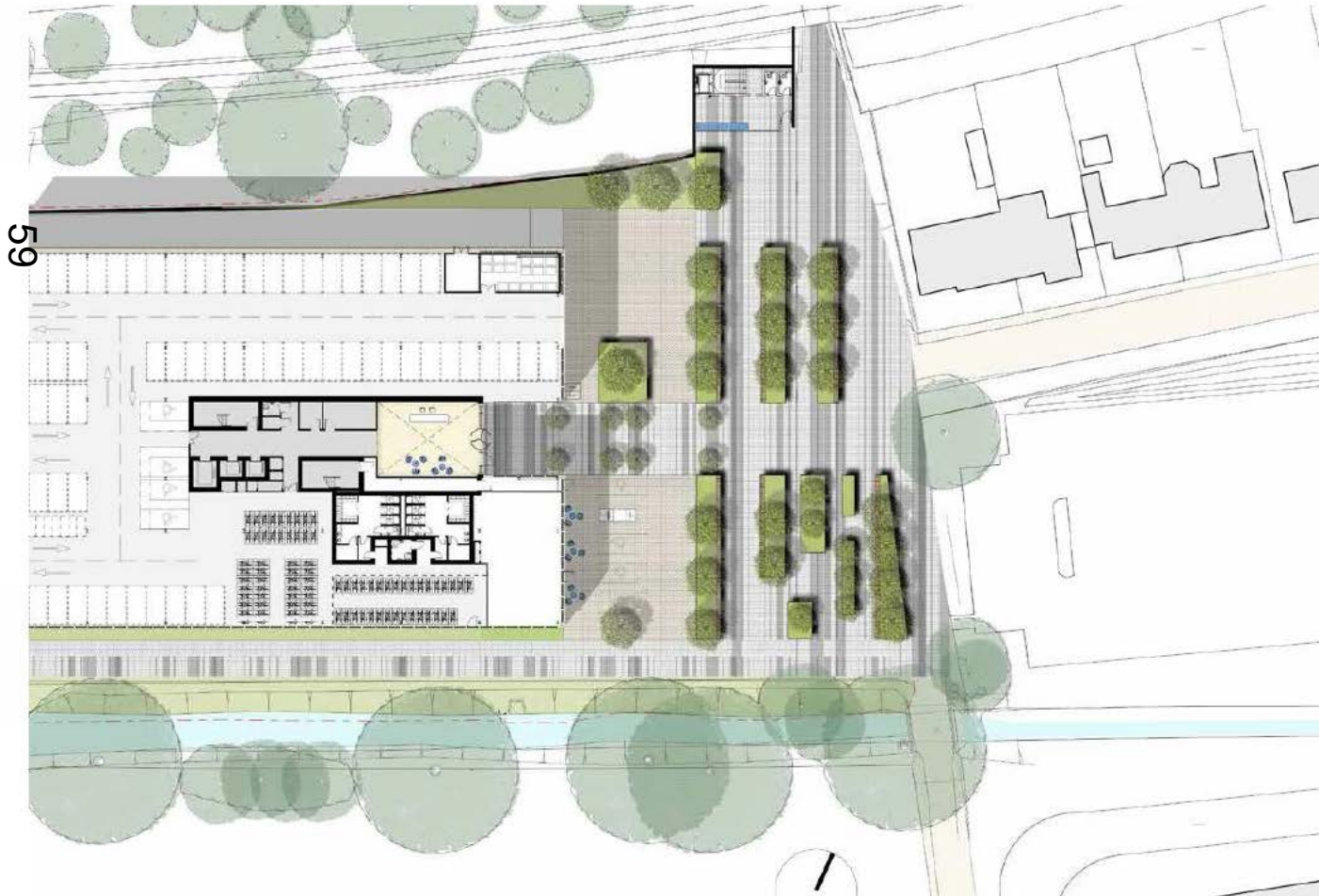
Entrance to site from Minchery Lane with Branch Line Station

d.gov.uk

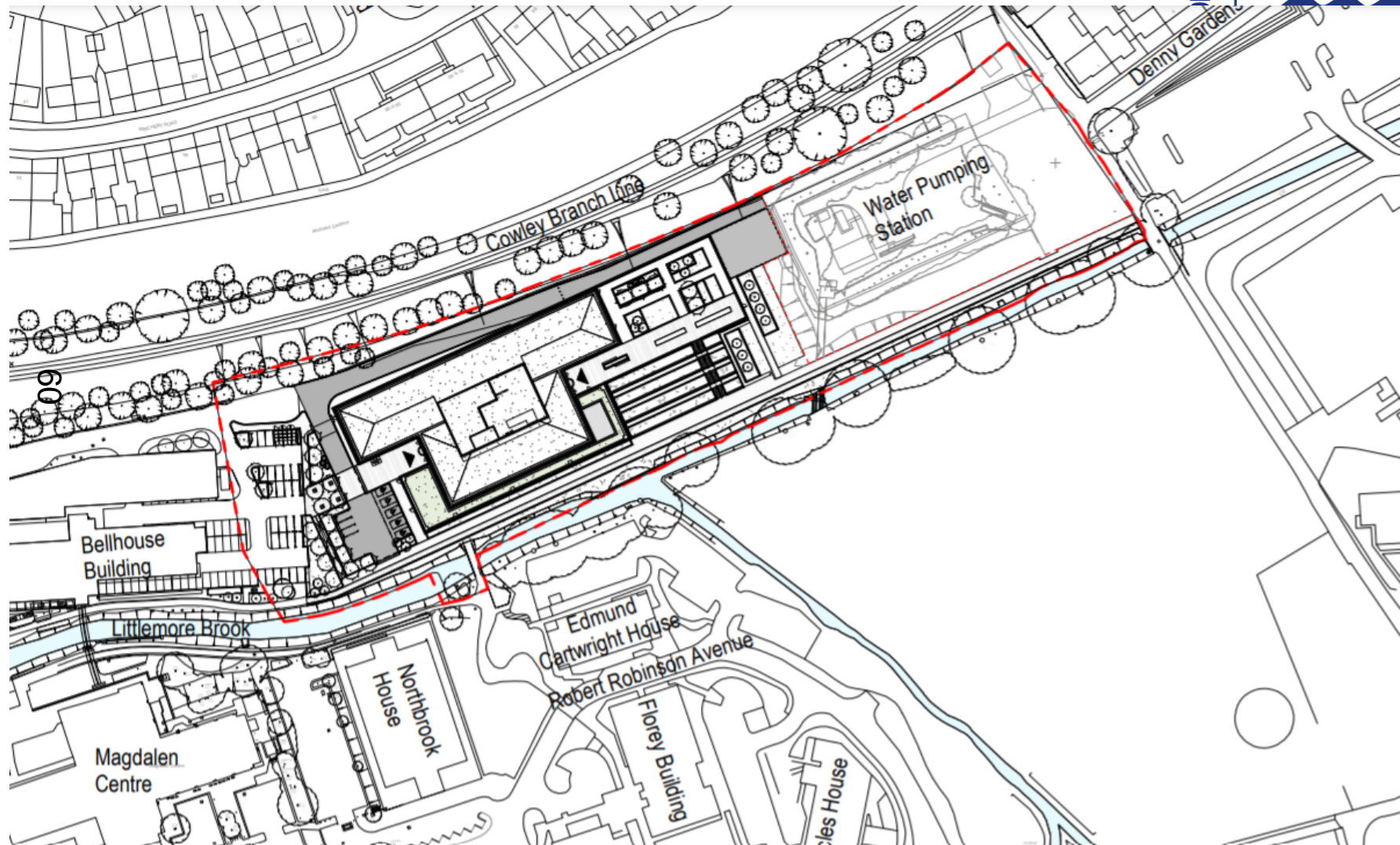


Future Design Options (With Branch Line Station)

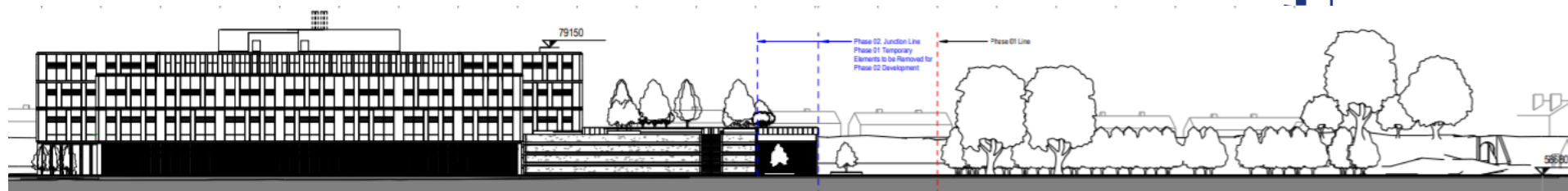
www.oxford.gov.uk



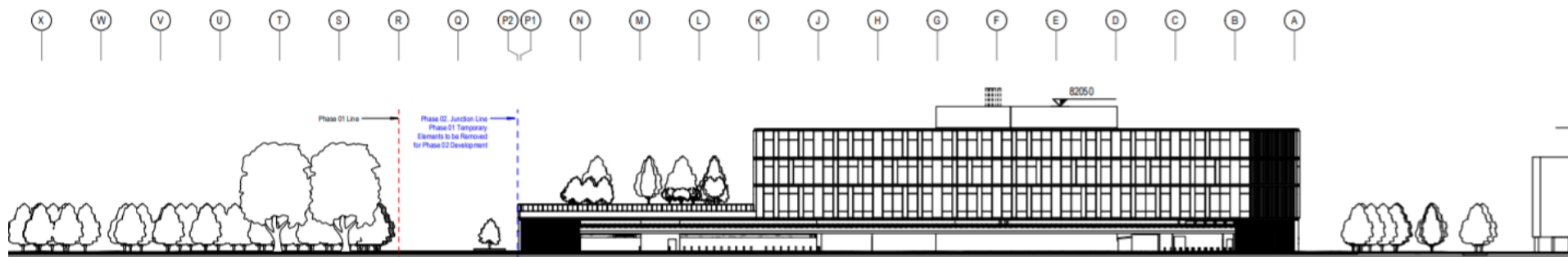
Site Plan – Phase 1



Phased Site Sections



61



Visuals of Building A – Phased (West View)



Visual of Building A Phased (South View)

ford.gov.uk



OXFORD
CITY COUNCIL



This page is intentionally left blank