

# Oxford City Planning Committee Presentation

**Reference Number: 24/00075/OUT**

3

**Site Address: Land at Bayswater  
Farm**

[www.oxford.gov.uk](http://www.oxford.gov.uk)



**OXFORD  
CITY  
COUNCIL**



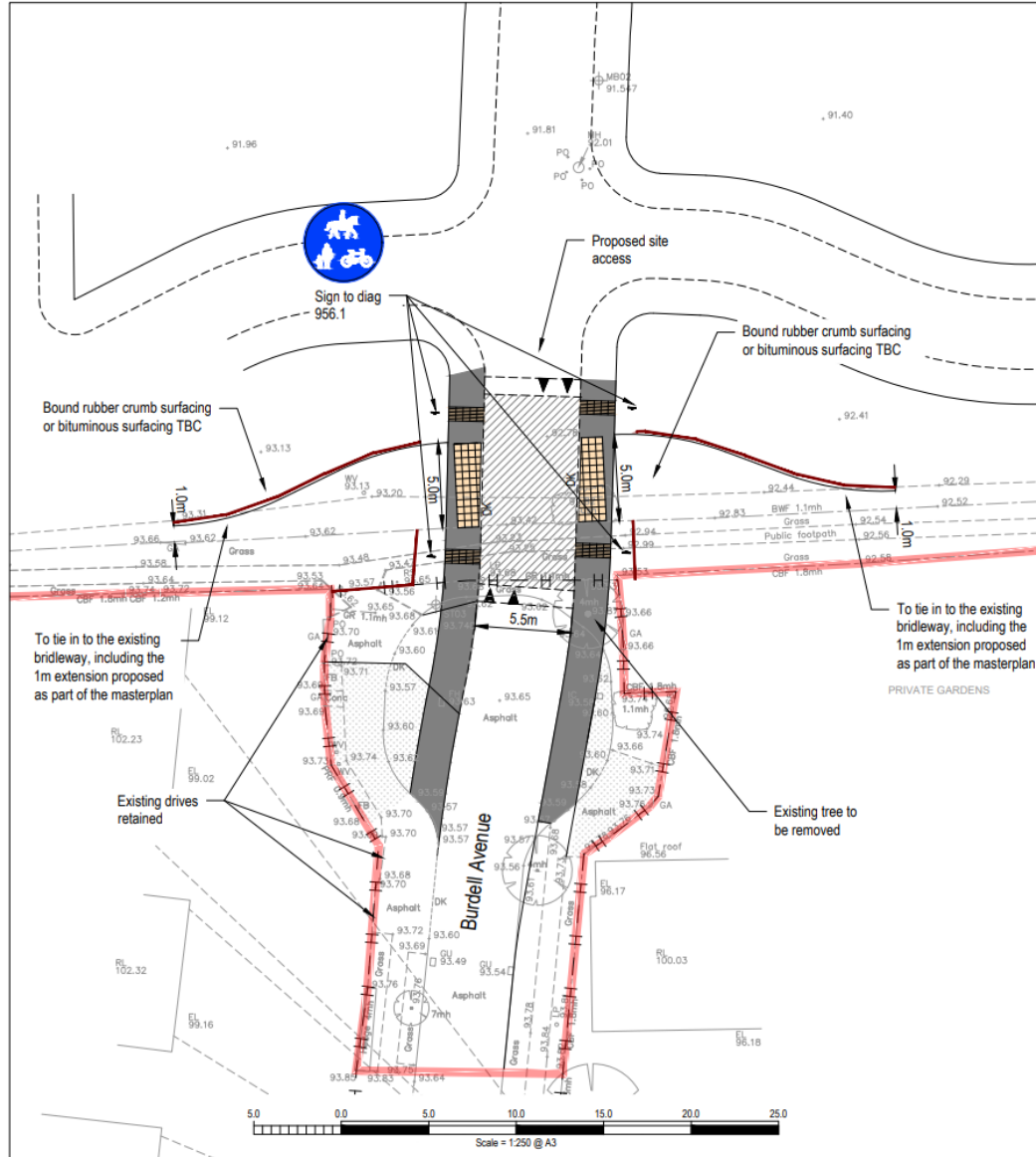
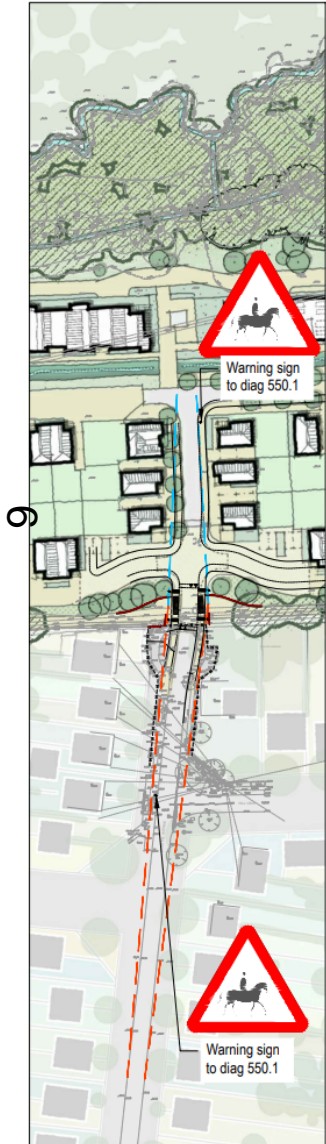
# Location Plan



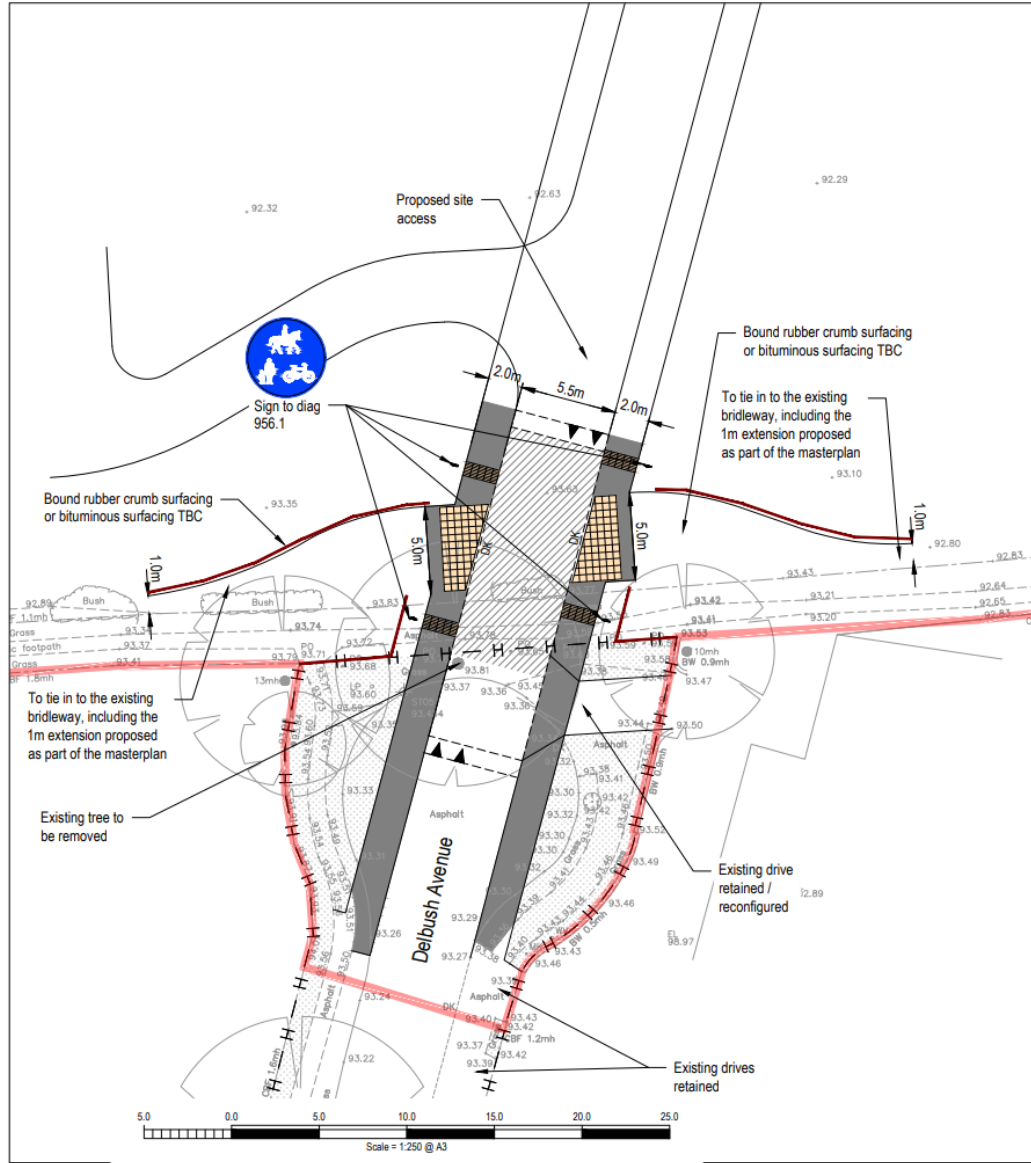
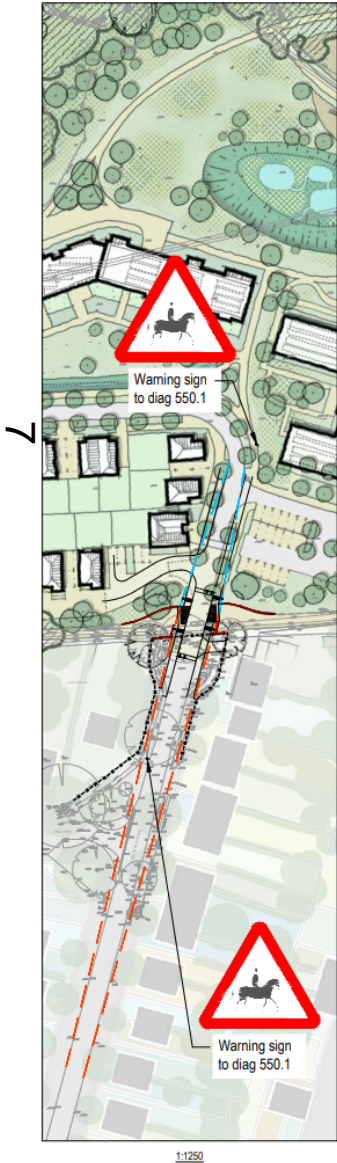
# Indicative Site Layout



# Burdell Avenue – Proposed Access



# Delbush Avenue – Proposed Access



# Burdell Avenue Access

d.gov.uk



**OXFORD  
CITY  
COUNCIL**



# Delbush Avenue – Proposed Access

rd.gov.uk



**OXFORD  
CITY  
COUNCIL**



# Public Right of Way Adjacent to Delbush Avenue Access

oxford.gov.uk



OXFORD  
CITY  
COUNCIL





# Proposed Access View from Application Site



11

[www.oxford.gov.uk](http://www.oxford.gov.uk)



**OXFORD  
CITY  
COUNCIL**



This page is intentionally left blank