

# East Area Planning Committee Presentation

18/00290/CT3

2 to 24 Stowford Road

51

[www.oxford.gov.uk](http://www.oxford.gov.uk)

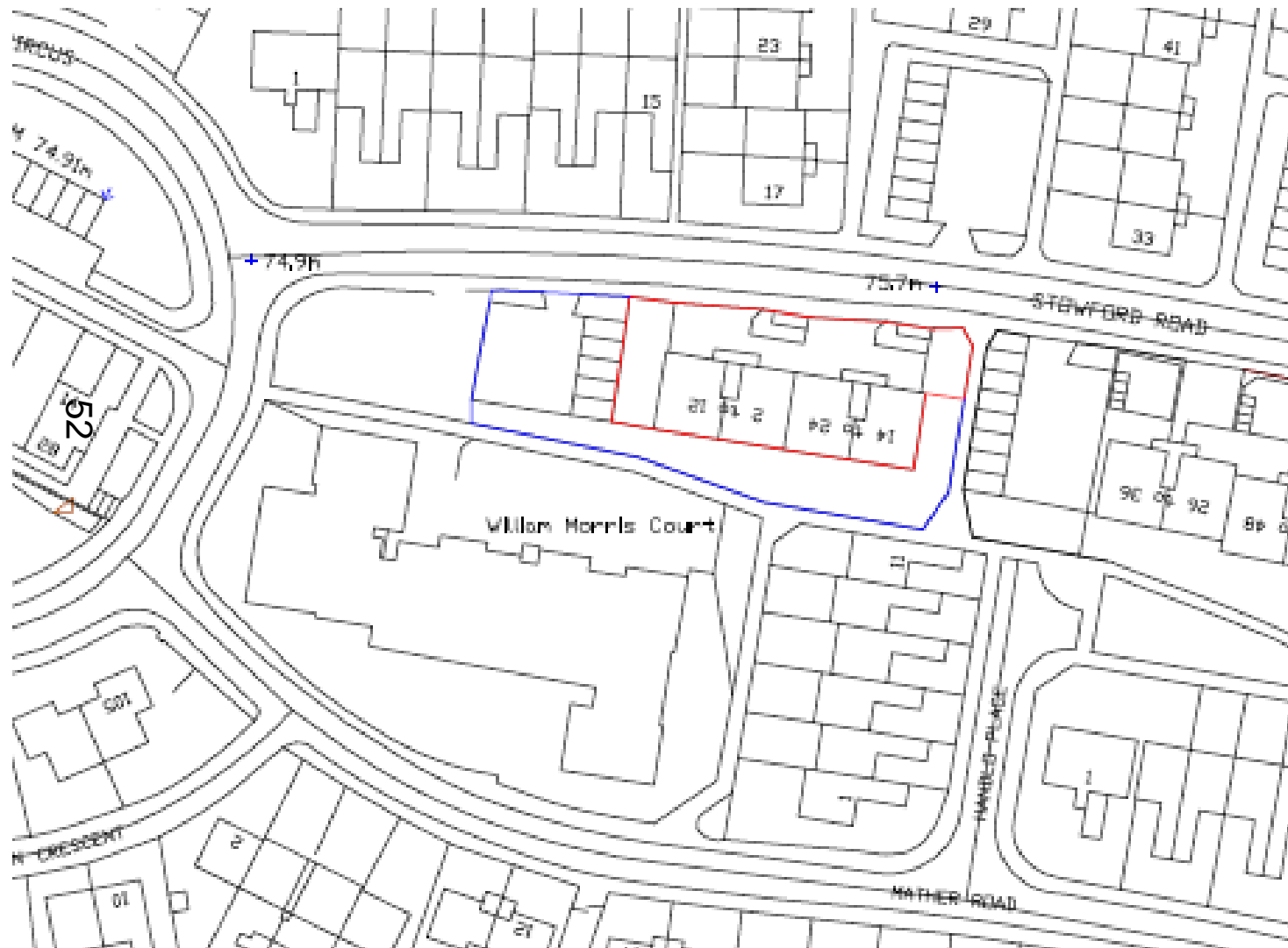


**OXFORD  
CITY  
COUNCIL**



Agenda Item 10

# Site Location Plan





53

[www.oxford.gov.uk](http://www.oxford.gov.uk)



**OXFORD  
CITY  
COUNCIL**





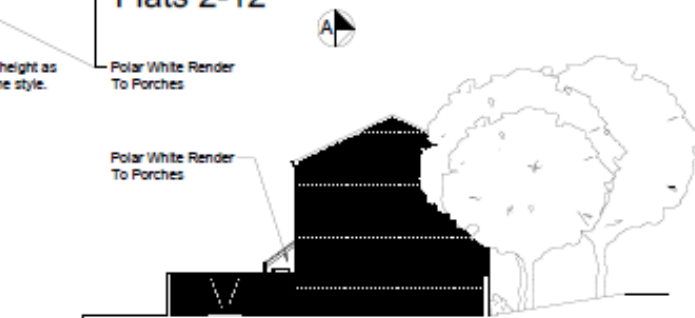
[www.oxford.gov.uk](http://www.oxford.gov.uk)



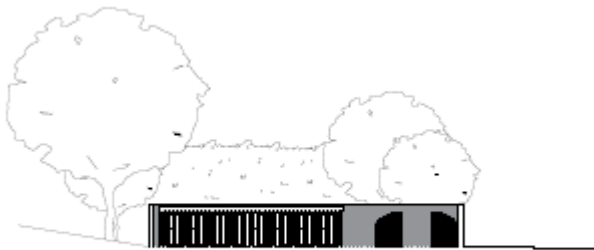
# Proposed Plans



East Elevation



West Elevation



Section A:A



This page is intentionally left blank